

EXHAUST FAN SCHEDULE

MARK	LOC. AT ROOM	TYPE	MIN. CAP.		MAX. TIP SPEED (FPM)	DRIVE	MOTOR (BY M.C.)					REMARKS	CONTROLS	ELECT REF.
			CFM	SP			HP	RPM	SPEED	ELECT.	STARTER			
EF-1	CHLOR	WALL	1600	.125	---	D	1/2	1725	1	120V	---	① BTM OF OPNG 7'-6" AFF	(A)	
EF-2	AMMON	WALL	150	.125	---	D	1/15	1550	1	120V	---	② BTM OF OPNG 5'-6" AFF	CONTIN	
EF-3	CHLOR	WALL	160	.125	---	D	1/15	1550	1	120V	---	② BTM OF OPNG 5'-6" AFF	CONTIN	
EF-4	PUMP	WALL	350	.25	---	D	1/8	1160	1	120V	---	③ BTM OF OPNG 90" AFF	T'STAT	
EF-5	AMMON	WALL	1600	.125	---	D	1/2	1725	1	120V	---	① BTM OF OPNG 7'-6" AFF	(A)	

- ① BASED ON TWIN CITY FANS AND BLOWERS FIBER-AIRE SA FIBERGLASS WALL EXHAUSTER, MODEL 14SA3 W/ PVC DAMPER, PVC COATED BIRDSCREEN.
 ② BASED ON TWIN CITY FANS AND BLOWERS FIBER-AIRE SA FIBERGLASS WALL EXHAUSTER, MODEL 7SA W/ PVC DAMPER, PVC COATED BIRDSCREEN.
 ③ BASED ON TWIN CITY FANS AND BLOWERS WALL EXHAUSTER, MODEL DCRW 092, WITH WALL BRACKET, BACKDRAFT DAMPER, BIRDSCREEN.
 (A) SEE DIAGRAM 4 ON ELECTRICAL SHEET E1.1
 EF ACTIVATED BY EXTERIOR SWITCH OR BY LEAK DETECTION CONTACTS; EF ACTIVATED BY SWITCH OUTSIDE OUTSIDE DOOR UNDER NORMAL CONDITIONS; EF MANUALLY DE-ACTIVATED AT CONTROL PANEL IF STARTED BY LEAK DETECTION CONTACTS.

UNIT HEATER SCHEDULE - ELECTRIC

MARK	LOC. AT ROOM	TYPE	FAN CFM	HEATING CAPACITY		MOTOR		SYSTEM ELECTRIC	REMARKS	ELECT. REF.
				KW	BTUH	HP	RPM			
UH-1	CHLOR	HORZ	400	3	11,200	---	---	208/3	① BTM AT 90" AFF	
UH-2	AMMON	HORZ	400	3	11,200	---	---	208/3	① BTM AT 90" AFF	

- ① BASED ON MARKEL SERIES 5500 WASHDOWN FAN FORCED UNIT HEATER, W/ WALL MOUNTING BRACKET AND WALL MOUNTED T'STAT.

PACKAGED TERMINAL AC SCHEDULE

MARK	CFM	HEATING		COOLING			MIN. O.A. CFM	REMARKS	ELECT. REF.
		KW	VOLT.	TOTAL (MBH)	EAT DB/WB	OAT			
AC-1	1100	9	208/3	35.4	80/67	98	11.7	200	①

- ① BASED ON BARD THRU THE WALL UNIT, MODEL WA353-A, 2 STAGE, WITH 9 KW STRIP HEAT (6.75 KW @ 208V), INTAKE AND RETURN GRILLES, T'STAT, AND 2" FILTERS.

LOUVER SCHEDULE

MARK	TYPE	MATERIAL	APPROX. SIZE	DEPTH	FINISH	USE	DESIGN CFM	MAX. APD	MIN. FREE AREA	TOP AT AFF	MAX. WATER PENETRATION OUNCES / SF AT 1000 FPM	REMARKS
LL-1	INTAKE	ALUM	18x24	4"	KYNAR	---	1200	.14	1.4	3'-0"		INTERLOCK W/ EF-1 & 3
LL-2	INTAKE	ALUM	18x18	4"	KYNAR	---	200	.01	.97	9'-0"		INTERLOCK W/ EF-2
LL-3	INTAKE	ALUM	24x12	4"	KYNAR	---	350	.03	.56	9'-0"		INTERLOCK W/ EF-4

- ① BASED ON RUSKIN ELF-375 W/ CD50 LOW LEAK DAMPER SIZED TO MATCH LOUVER.

WATER HEATER SCHEDULE

MARK	LOC. AT ROOM	TYPE	MIN. CAPACITY		ELECTRIC		EXP. TANK	REMARKS	RECIRC PUMP REF.	ELECT REF.
			GAL STOR	GPH RECOVERY AT 100' RISE	TOTAL KW	NO. ELEMENTS				
WH-1		M-TANK	4	---	1.44	1	120/1	---	---	①

- ① BASED ON EEMAX POINT OF USE MINI TANK, EMT4

PLUMBING FIXTURE SCHEDULE

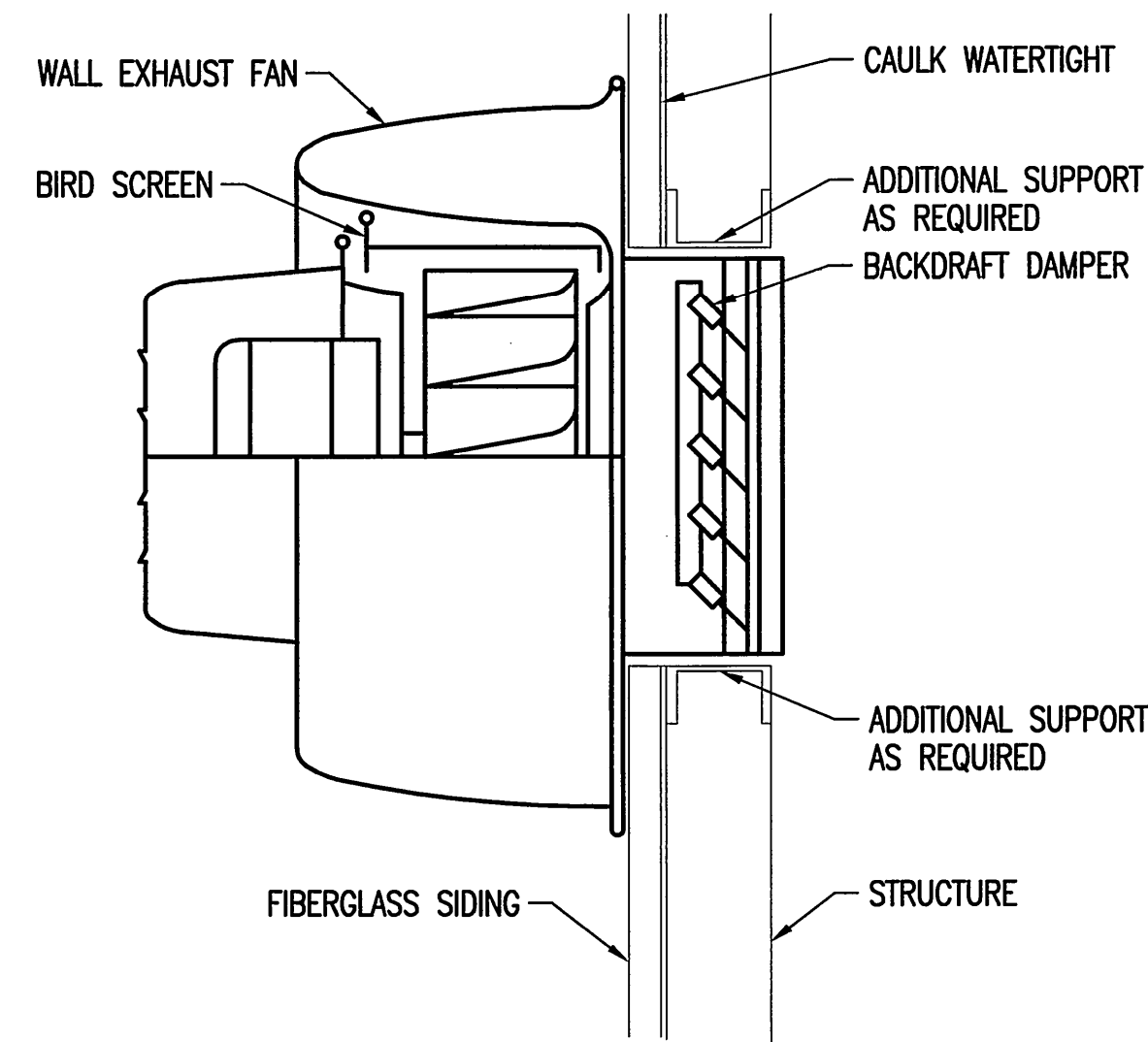
"P" NO.	FIXTURE	WATER				WASTE		VENT	REMARKS
		COLD		HOT		RUNOUT	CONN.		
		RUNOUT	CONN.	RUNOUT	CONN.				
P-1	2 COMPARTMENT SINK	1/2"	3/8"	1/2"	3/8"	2"	1 1/2"	1 1/2"	

- P-1: Double Compartment Sink:
 Just DL-2233-A-GR 33"x22" self-rimming, double compartment 18 gauge stainless steel bar sink with 3 hole drilling - Delta 101-ELH single lever faucet with aerator, swing spout and 6" elbow handle - Just J-35 drains with strainers with rubber stoppers - chrome plated wall supplies with loose key stops - 1-1/2" chrome plated cast brass "P" trap.

SUMP PUMP SCHEDULE

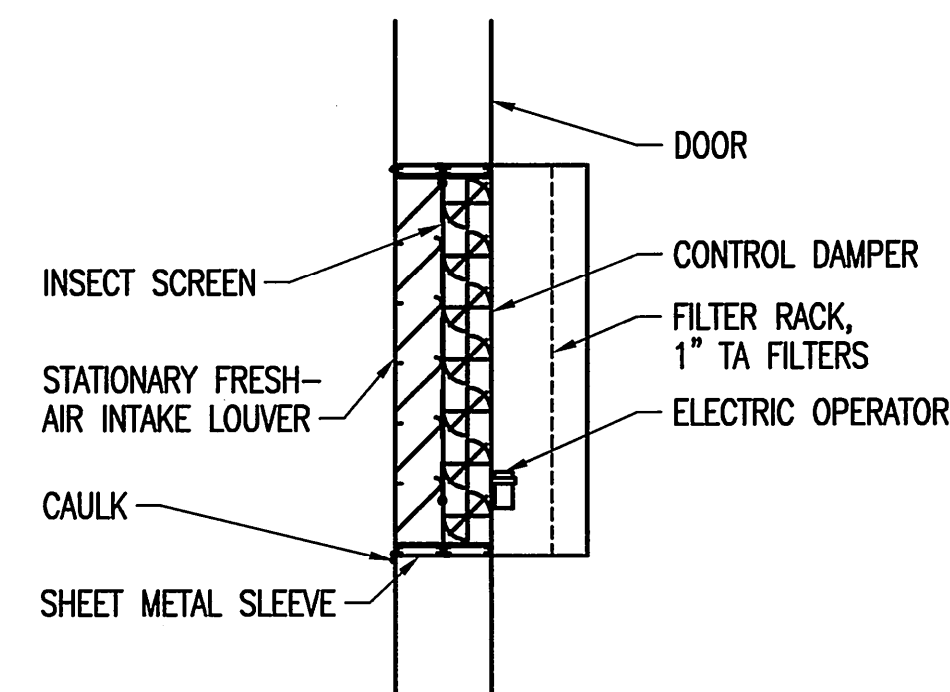
MARK	LOCATION	BASIN		PUMP				REMARKS	ELEC REF.
		SIZE	INLET	G.P.M.	AMPS	R.P.M.	HEAD		
SP-1	---	18"Ø x 36" DEEP	(2) 4" (1) 2"	20	9.7	1550	15	115/1	①

- ① BASED ON ZOELLER MODEL 57 ALL CAST IRON CONSTRUCTION, FLOAT OPERATED, AUTOMATIC OPERATION, INCLUDED MODEL 30-0164-1 1/2" FULL FLOW CHECK VALVE.



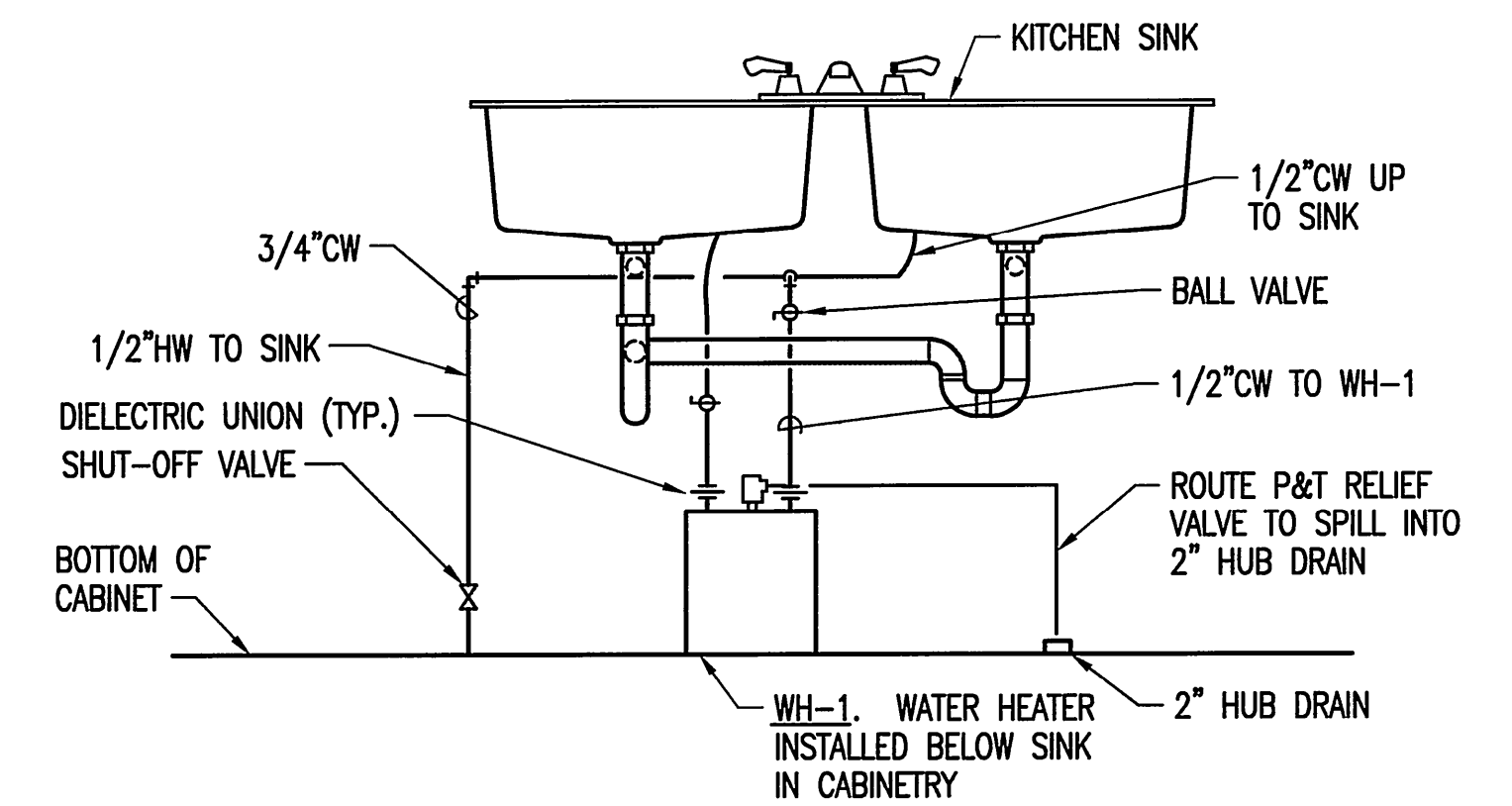
① EXHAUST FAN DETAIL - WALL

SCALE: NONE



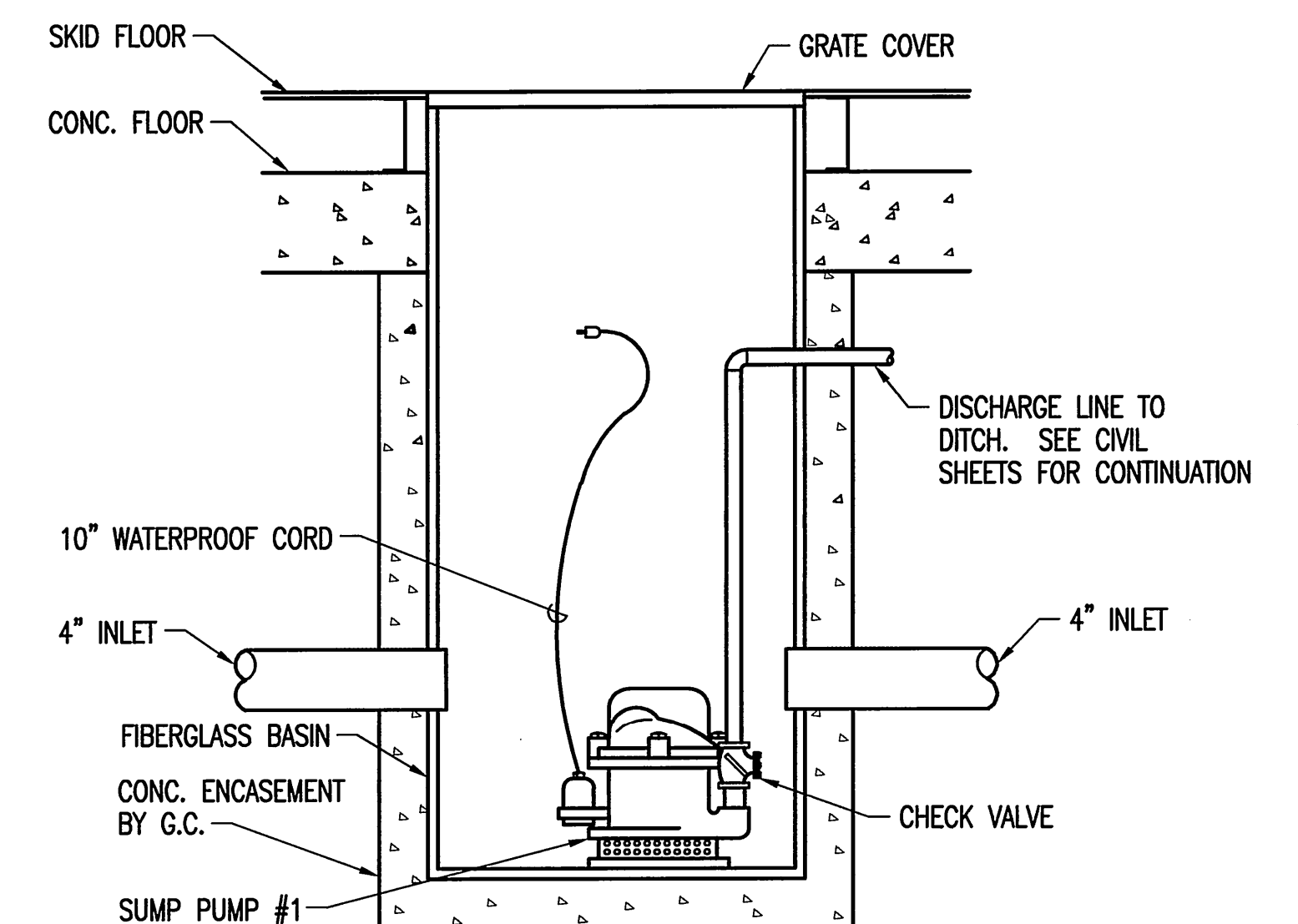
② LOUVER DETAIL - INTAKE

SCALE: NONE



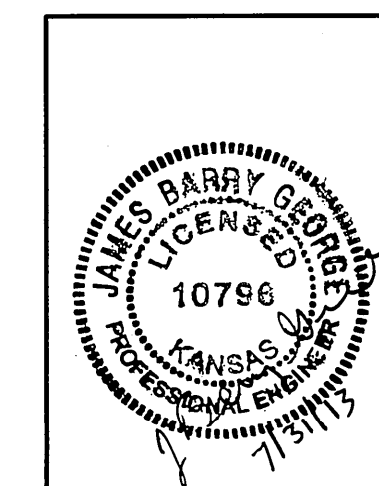
③ ELECTRIC POINT-OF-USE WATER HEATER #1 DETAIL

SCALE: NONE



④ SUMP PUMP DETAIL - SIMPLEX

SCALE: NONE



No.	Revision	By	Date

SEDGWICK COUNTY RURAL WATER DISTRICT #1
 WATER DISTRIBUTION SYSTEM IMPROVEMENTS
MECHANICAL
 DETAILS/SCHEDULES
 GARY JANZEN, P.E. - CITY ENGINEER
 CITY OF WICHITA PROJECT NO. 448-90565

PEC
 PROFESSIONAL ENGINEERING CONSULTANTS, P.A.
 303 SOUTH TOPEKA WICHITA, KS 67202
 316-262-2691 www.pec1.com

Designed by JBG	Job No. 34-11123	sht. M2.1 of 24
Drawn by JMU	Date JULY 2013	