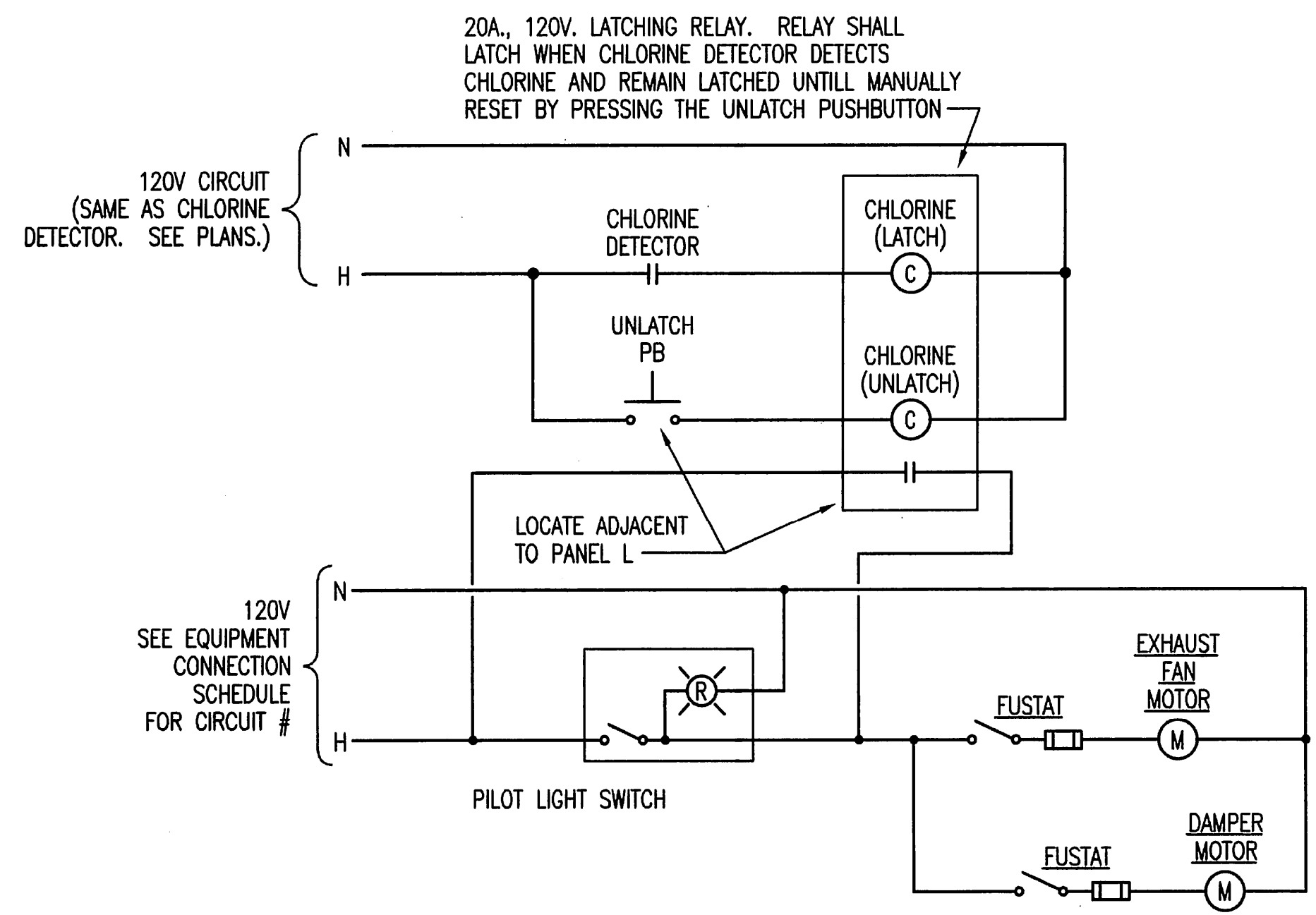


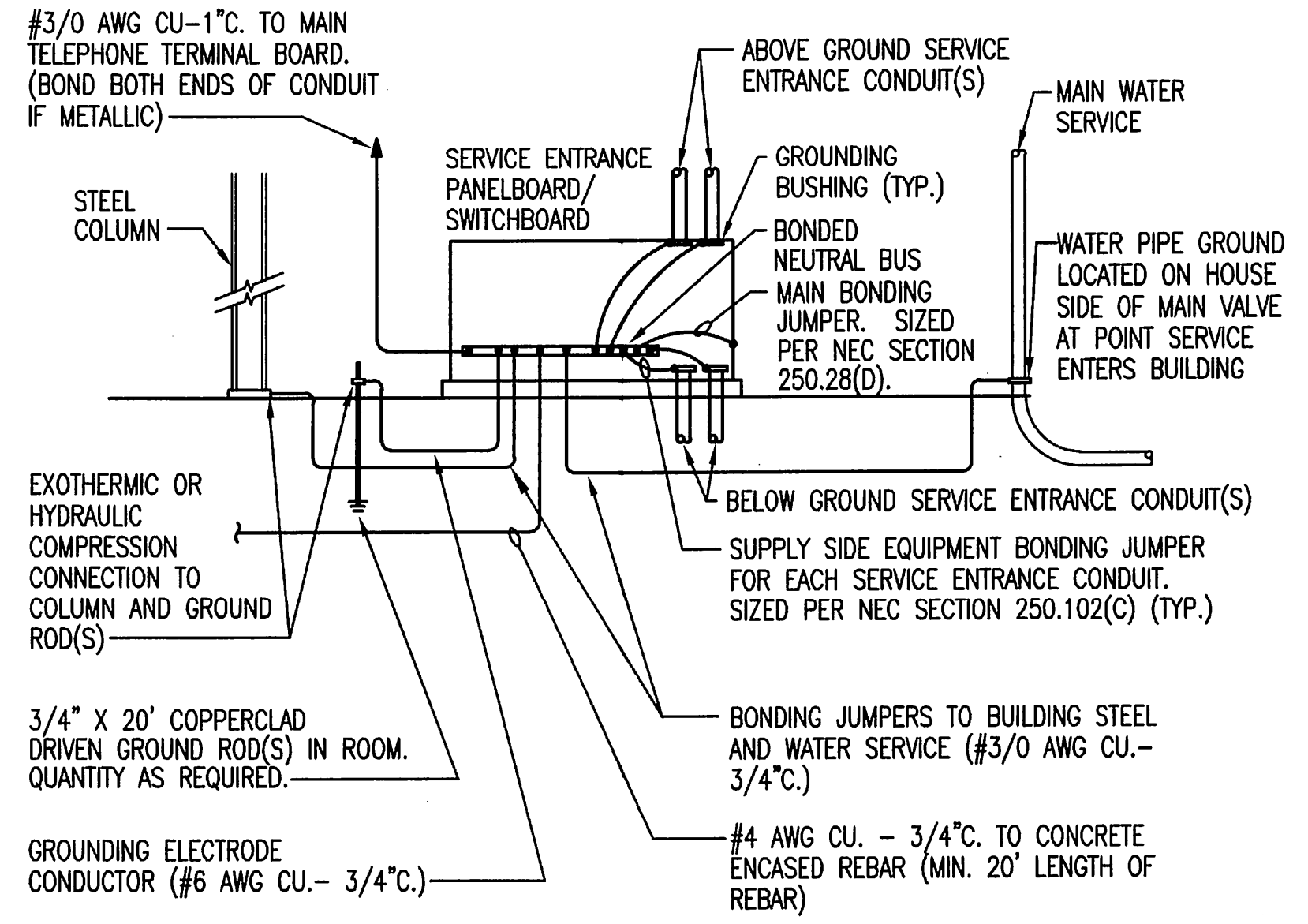
- NOTES:**
1. VERIFY PAD LOCATION, DIMENSIONS & ALL REQUIREMENTS WITH LOCAL UTILITY CO.
 2. THE TOP OF THE TRANSFORMER PAD SHALL RECEIVE A SMOOTH TROWEL FINISH. THE CORNERS AND EDGES SHALL BE ROUNDED OR BEVELLED.
 3. THE CONCRETE SHALL BE A MINIMUM OF 3,000 LB. MIX.
 4. CONTRACTOR SHALL EXTEND FORMS DOWN TO AT LEAST 3" BELOW AVERAGE GROUND LINE.
 5. TOP OF CONDUITS SHALL BE FLUSH WITH TOP OF PAD.
 6. THE CONDUIT OPENING SHALL BE FREE AND CLEAR OF CONCRETE.
 7. PILLARS ARE FORMED BY AUGERING AN 8" DIAMETER HOLE TO A DEPTH OF UNDISTURBED EARTH. A SEPARATOR, SUCH AS TAR PAPER, SHOULD BE PLACED BETWEEN THE PILLAR AND THE PAD SO THE PAD CAN BE LEVELLED AT A LATER TIME IF NECESSARY.

1 TRANSFORMER PAD DETAIL
NO SCALE



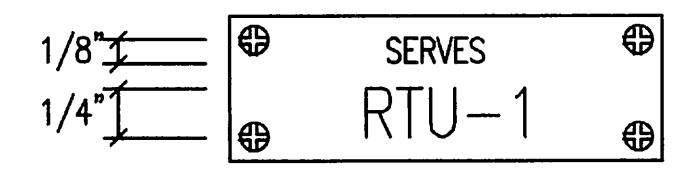
4 TYPICAL WIRING DIAGRAM - LATCHING RELAY
NO SCALE EF-1, EF-5 (SIM)

NOTE: WIRING FOR EF-5 SHALL BE SIMILAR, BUT SHALL BE INTERLOCKED WITH THE AMMONIA DETECTOR.

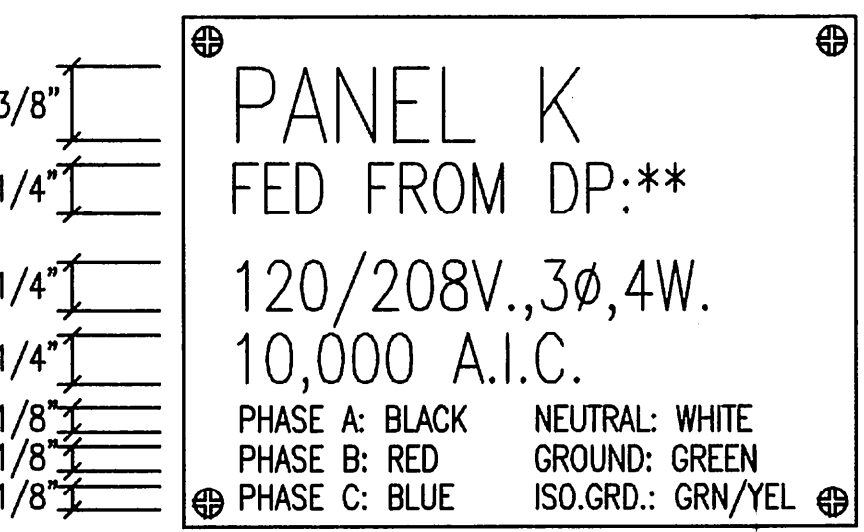
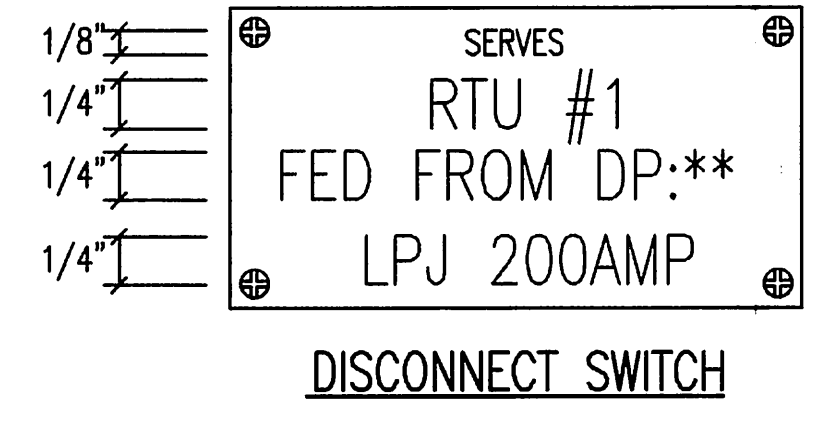


NOTE: PROVIDE OTHER GROUNDING CONNECTIONS AS SPECIFIED IN NEC SECTION 250.50.

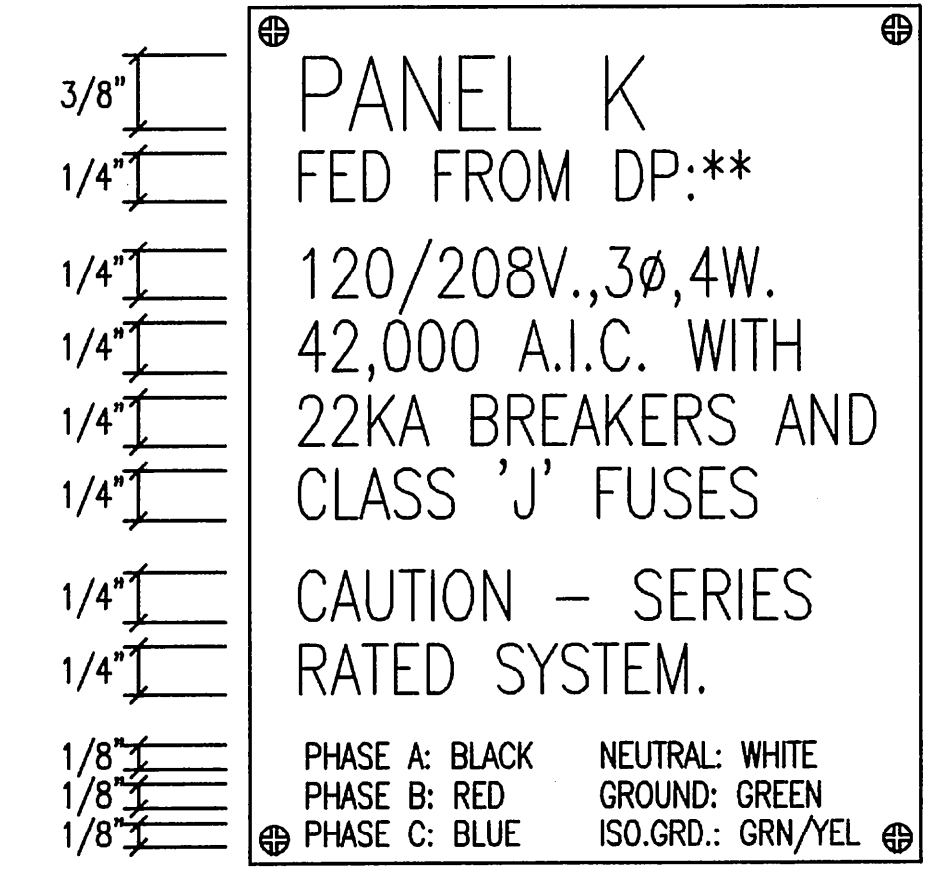
2 SYSTEM GROUNDING DETAIL - PANEL
NO SCALE



SWITCHBOARD/DISTRIBUTION PANEL/MOTOR CONTROL CENTER BREAKER/SWITCH

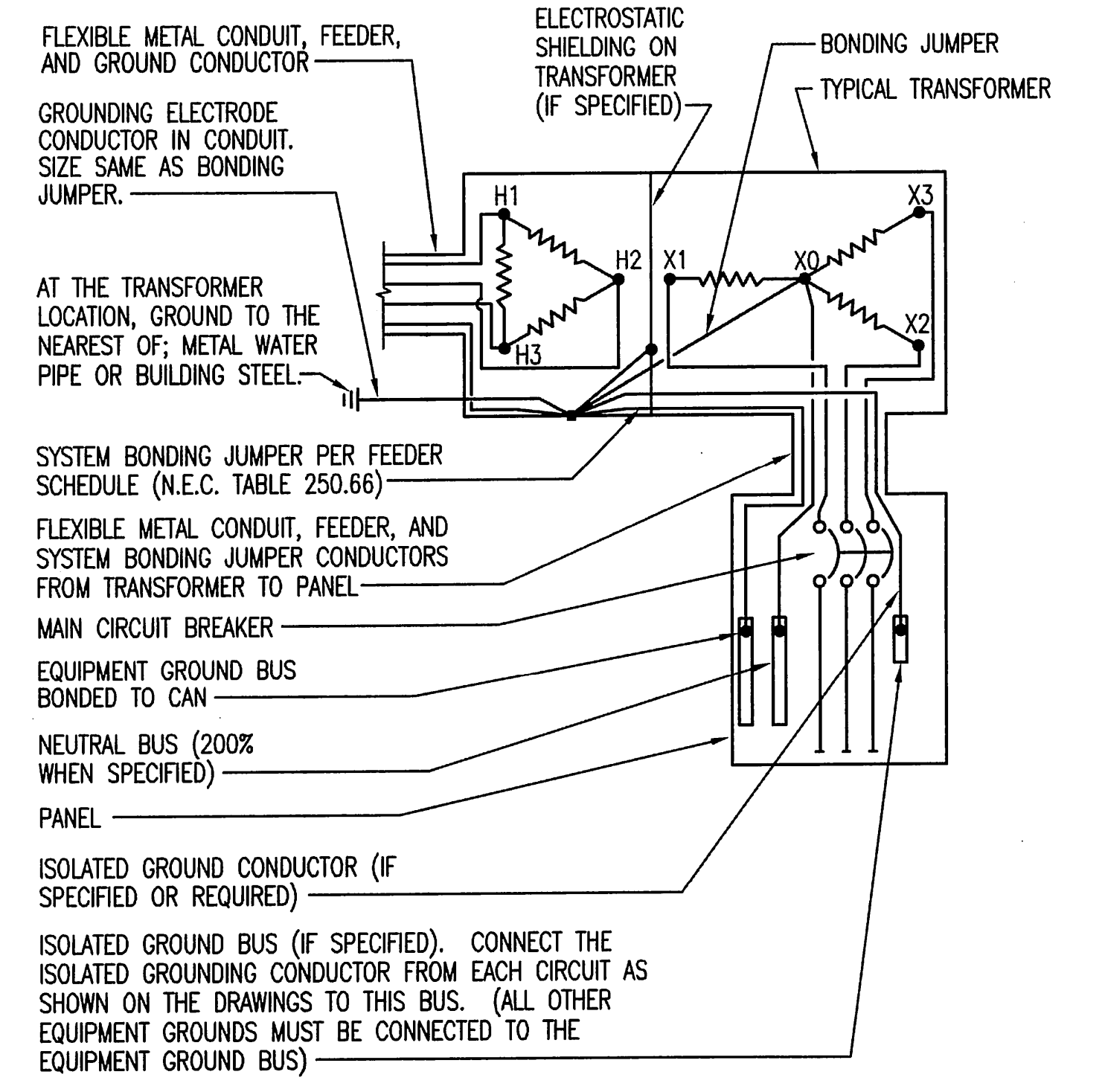


BRANCH CIRCUIT/DISTRIBUTION PANEL

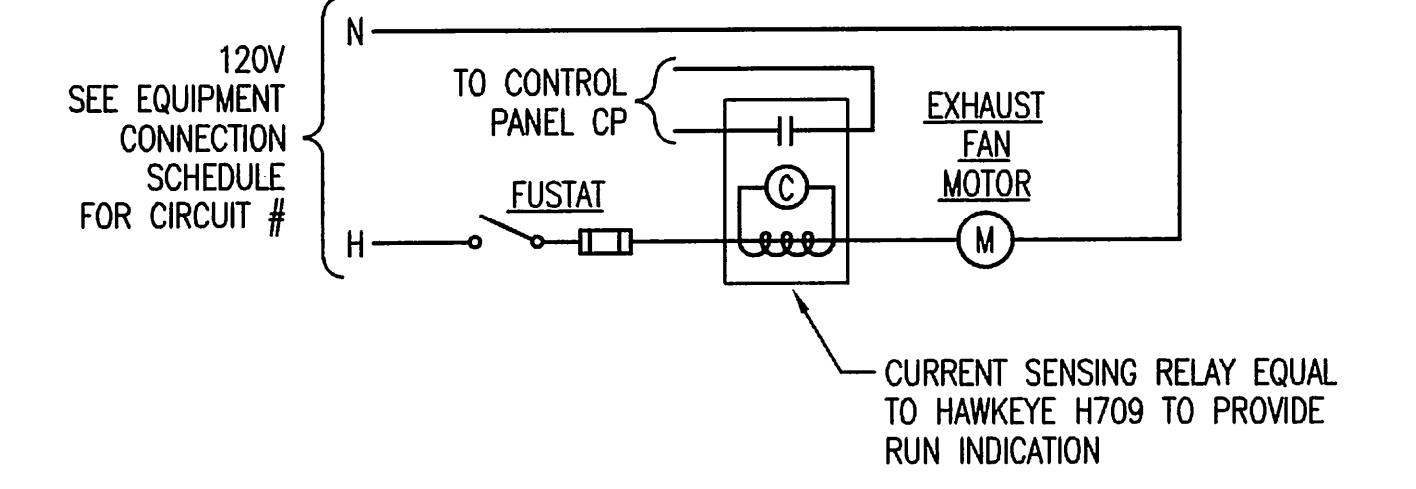


BRANCH CIRCUIT/DISTRIBUTION PANEL SERIES RATED

6 TYPICAL NAME PLATES
NO SCALE



3 TYPICAL TRANSFORMER GROUNDING DETAIL
NO SCALE
NOTE: WHERE METAL WATER PIPING OR BUILDING STEEL IS UNAVAILABLE, GROUND TO ANY OF THE OTHER ELECTRODES IDENTIFIED IN N.E.C. ARTICLE 250, PARAGRAPH 250.52(A).



5 TYPICAL WIRING DIAGRAM - EXHAUST FAN EF-2 & EF-3
NO SCALE

Saved 07-10-2013 5:49:15 PM by ADM
Plot Scale 1:96 07-31-2013 12:28:14 PM by CUY
E:\2011\1123\1123-E1-1-Elec Details

No.	Revision	By	Date
SEDGWICK COUNTY RURAL WATER DISTRICT #1 WATER DISTRIBUTION SYSTEM IMPROVEMENTS ELECTRICAL DETAILS GARY JANZEN, P.E. - CITY ENGINEER CITY OF WICHITA PROJECT NO. 448-90565 PROFESSIONAL ENGINEERING CONSULTANTS, P.A. 303 SOUTH TOPEKA WICHITA, KS 67202 316-262-2691 www.pec1.com			
Designed by	RDB	Job No.	34-11123
Drawn by	ADM	Date	JULY 2013
			Sht. E1.1 of 9