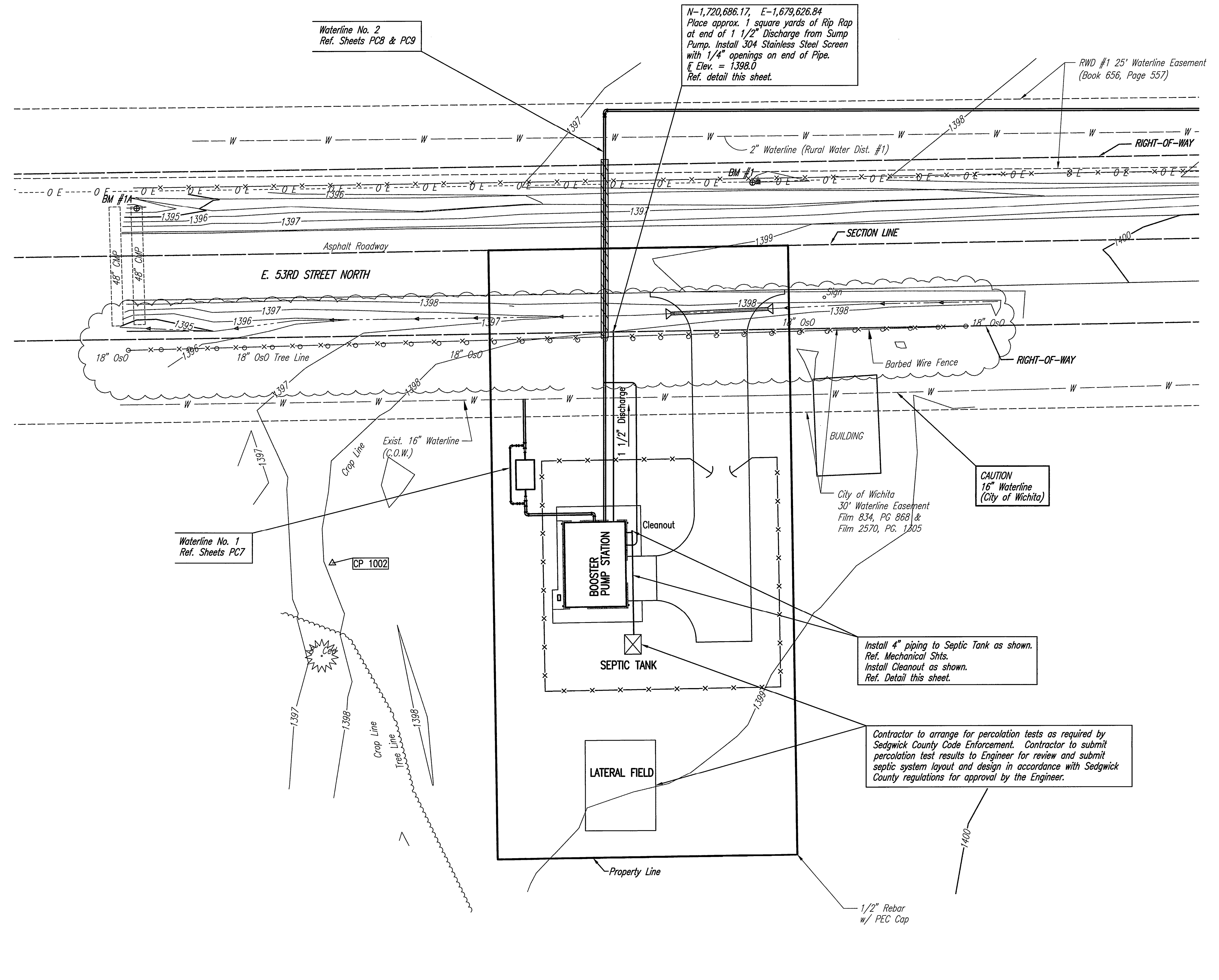


**CLEANOUT RISER ASSEMBLY DETAIL**

GENERAL NOTES:  
 BEDDING: BEDDING AROUND THE SANITARY SEWER RISER SHALL BE COMPACTED PIPE BEDDING TYPE 2. (TYPE 1 IN GROUNDWATER).  
 MATERIAL: RISER AND LATERALS SHALL BE CONSTRUCTED OF SDR-35 PVC PIPE. TEES SHALL BE SDR-26 PIPE.



Saved: 05-31-2013 11:21:09 AM by GJM  
 Plot: 05-31-2013 11:21:09 AM by GJM  
 C:\2011\1123\1123-FC3-Site Piping Plan

	Revision		By	Date
	SEDGWICK COUNTY RURAL WATER DISTRICT #1 WATER DISTRIBUTION SYSTEM IMPROVEMENTS <b>SITE PIPING PLAN</b> GARY JANZEN, P.E. - CITY ENGINEER CITY OF WICHITA PROJECT NO. 448-90565			
		PROFESSIONAL ENGINEERING CONSULTANTS, P.A. 303 SOUTH TOPEKA WICHITA, KS 67202 316-262-2691 www.pec1.com		
Designed by	SCU	Job No.	34-11123	Sht. PC3 of 24
Drawn by	CAE	Date	JULY 2013	