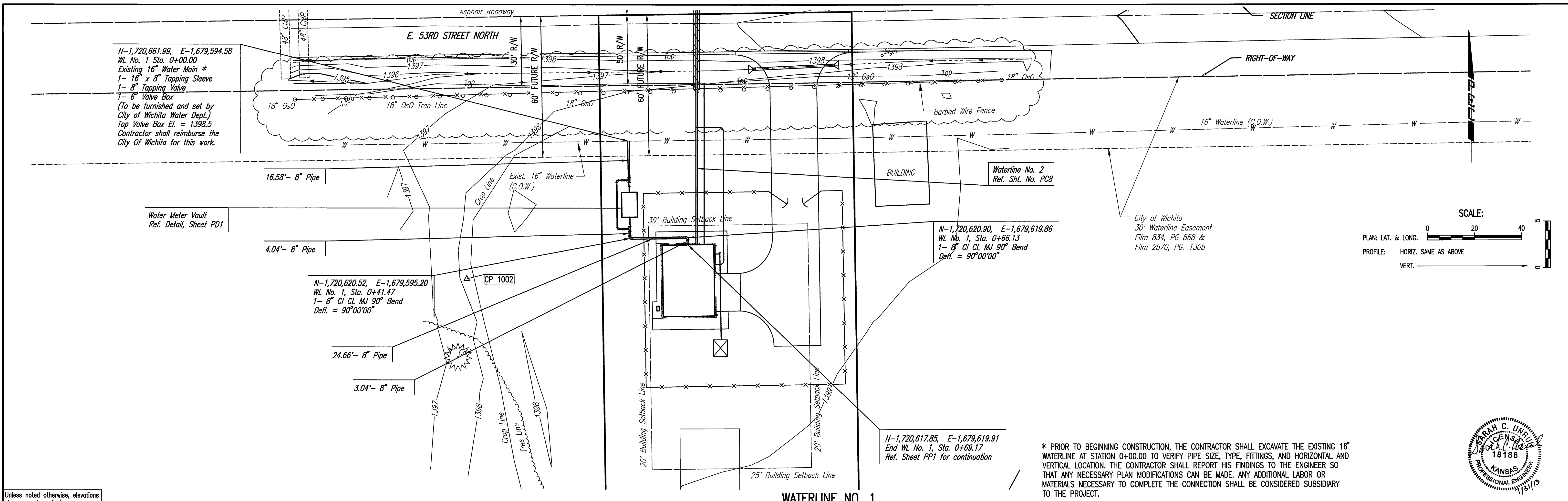


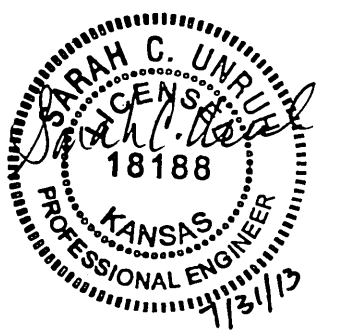
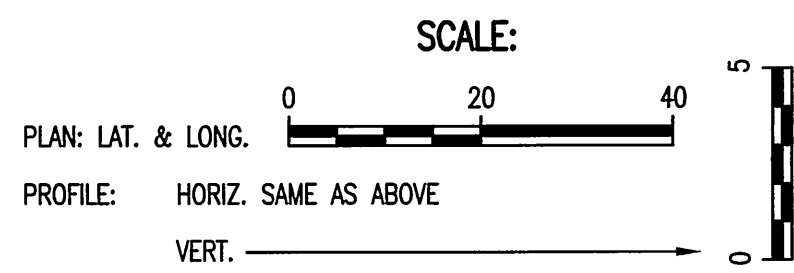
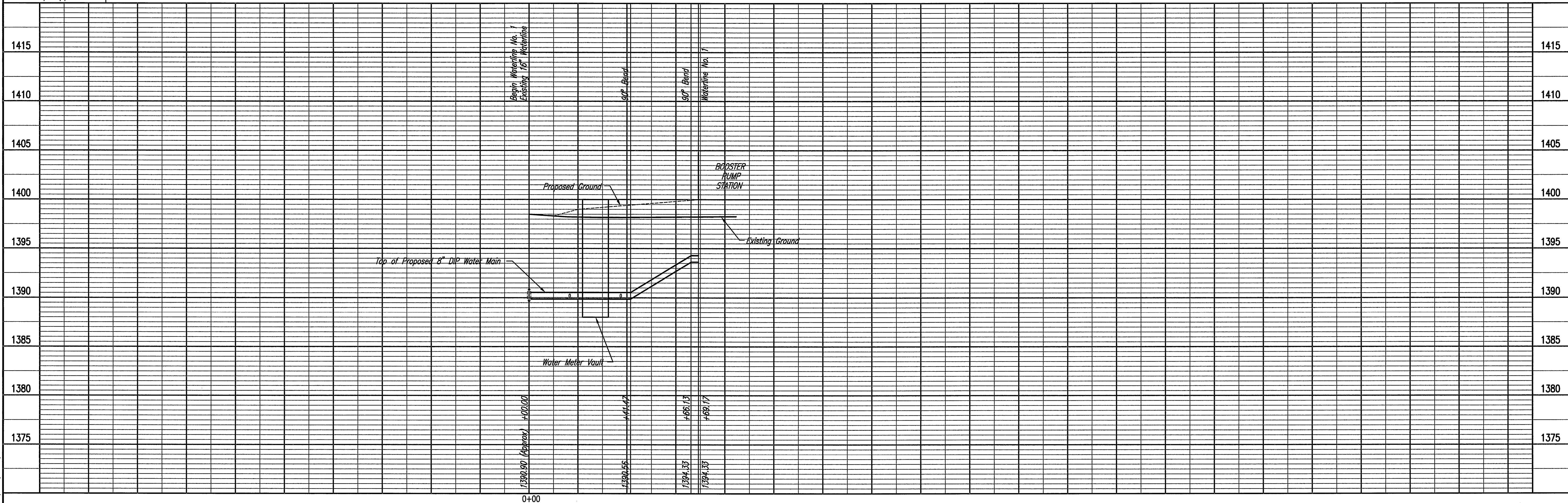
DATE
BY
CHECKED
CHECKED
PLAN

DATE
BY
CHECKED
CHECKED
PROFILE

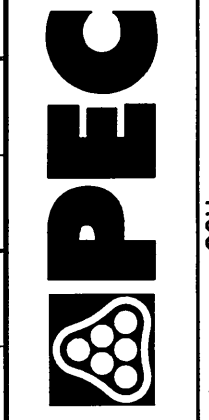
Scale: 07-29-2013 8:11:26 AM by GJM
Plot Scale 1:20 07-31-2013 8:47:59 AM by GJM
Q:\2011\11123\11123-PC7-WL NO. 1 PP



Unless noted otherwise, elevations shown are top of pipe



* PRIOR TO BEGINNING CONSTRUCTION, THE CONTRACTOR SHALL EXCAVATE THE EXISTING 16" WATERLINE AT STATION 0+00.00 TO VERIFY PIPE SIZE, TYPE, FITTINGS, AND HORIZONTAL AND VERTICAL LOCATION. THE CONTRACTOR SHALL REPORT HIS FINDINGS TO THE ENGINEER SO THAT ANY NECESSARY PLAN MODIFICATIONS CAN BE MADE. ANY ADDITIONAL LABOR OR MATERIALS NECESSARY TO COMPLETE THE CONNECTION SHALL BE CONSIDERED SUBSIDIARY TO THE PROJECT.


IPEC
 PROFESSIONAL ENGINEERING CONSULTANTS, P.A.
 308 SOUTH TOPEKA WICHITA, KS 67202
 316-262-2661 www.ipec.com
 Job No. 34-11123 Date JULY 2013
 Drawn By GJM
 Designed By SCU
 GARY JANZEN, P.E. - CITY ENGINEER
 CITY OF WICHITA PROJECT NO. 448-90565
WATERLINE NO. 1
 SEDGWICK COUNTY RURAL WATER DISTRICT #1
 WATER DISTRIBUTION SYSTEM IMPROVEMENTS