

CAUTION !!!
 2" Waterline (Rural Water District #1). Contractor to field verify location and elevation of 2" Waterline prior to beginning construction of the 8" Waterline.

N-1,720,765.69, E-1,679,623.68
 WL No. 2, Sta. 1+47.74
 1- 8" CI CL MJ 90° Bend
 Defl. = 90°00'00"
 1- 8" Valve Assembly (S)
 (MJ Gate Valve)
 Top Valve Box El. = 1397.1

N-1,720,765.69, E-1,679,775.94
 WL No. 2, Sta. 3+00.00

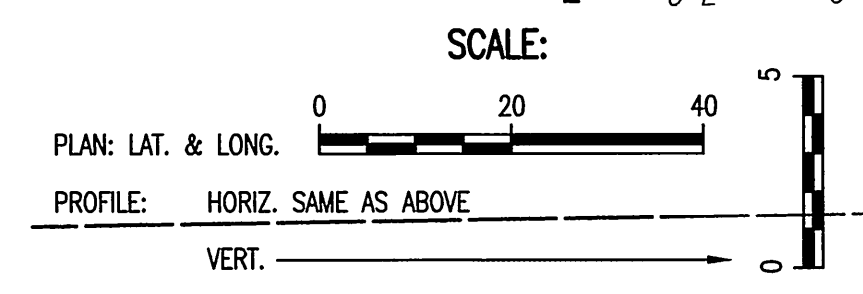
N-1,720,684.10, E-1,679,623.68 to
 N-1,720,748.09, E-1,679,623.68
 WL No. 2 Sta. 0+66.15 to WL No. 2 Sta. 1+30.15
 Install 64 L.F. Steel Casing by Boring. (Min. I.D. 10")
 Ref. Detail, Sht. PD2
 Directional Drilling with Restrained Joint Pipe is also allowed.

N-1,720,667.95, E-1,679,623.68
 WL No. 2 Sta. 0+50.00
 Install Tapping Saddle for 1/2" Tap and
 1/2" Corporation Stop on 8" Waterline.
 Install 1/2" pipe in 2" PVC Sch. 40
 Conduit for Sample Line as shown to
 Booster Pump Station. Use Long
 Radius Bends. Ref. Sht. PP1 for
 continuation.

N-1,720,617.95, E-1,679,623.68
 Begin WL No. 2
 Sta. 0+00.00

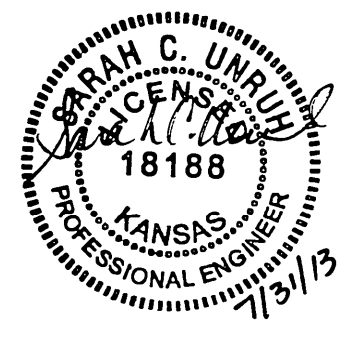
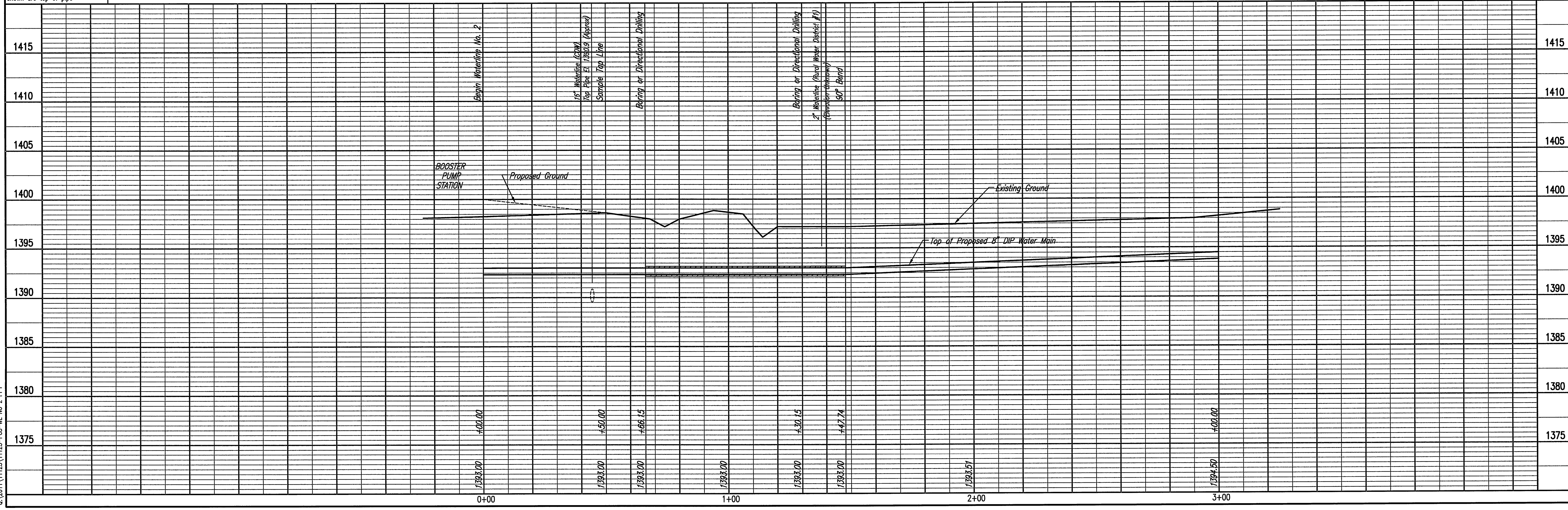
City of Wichita
 30' Waterline Easement
 Film 834, PG. 868 &
 Film 2570, PG. 1305

PLAN
 CHECKED
 CHECKED
 BY: _____ DATE: _____



Unless noted otherwise, elevations shown are top of pipe

PROFILE
 CHECKED
 CHECKED
 BY: _____ DATE: _____



SEDGWICK COUNTY RURAL WATER DISTRICT #1
 WATER DISTRIBUTION SYSTEM IMPROVEMENTS
 WATERLINE NO. 2

GARY JANZEN, P.E. - CITY ENGINEER
 CITY OF WICHITA PROJECT NO. 448-90565

PROFESSIONAL ENGINEERING CONSULTANTS, P.A.
 303 SOUTH TOPEKA WICHITA, KS 67202
 316-262-2691 www.pec.com

Job No. 34-11123 Date JULY 2013
 Designed By SCU
 Drawn By GLM

Saved 07-29-2013 8:23:58 AM by GJM
 Scale 1/2" = 10' (HORIZ) 1/8" = 10' (VERT)
 C:\Users\GJM\Documents\1123\1123-PC8-WL No. 2.dwg