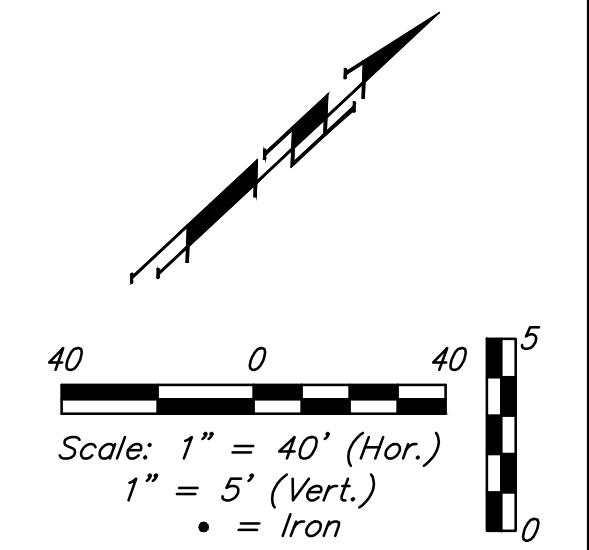
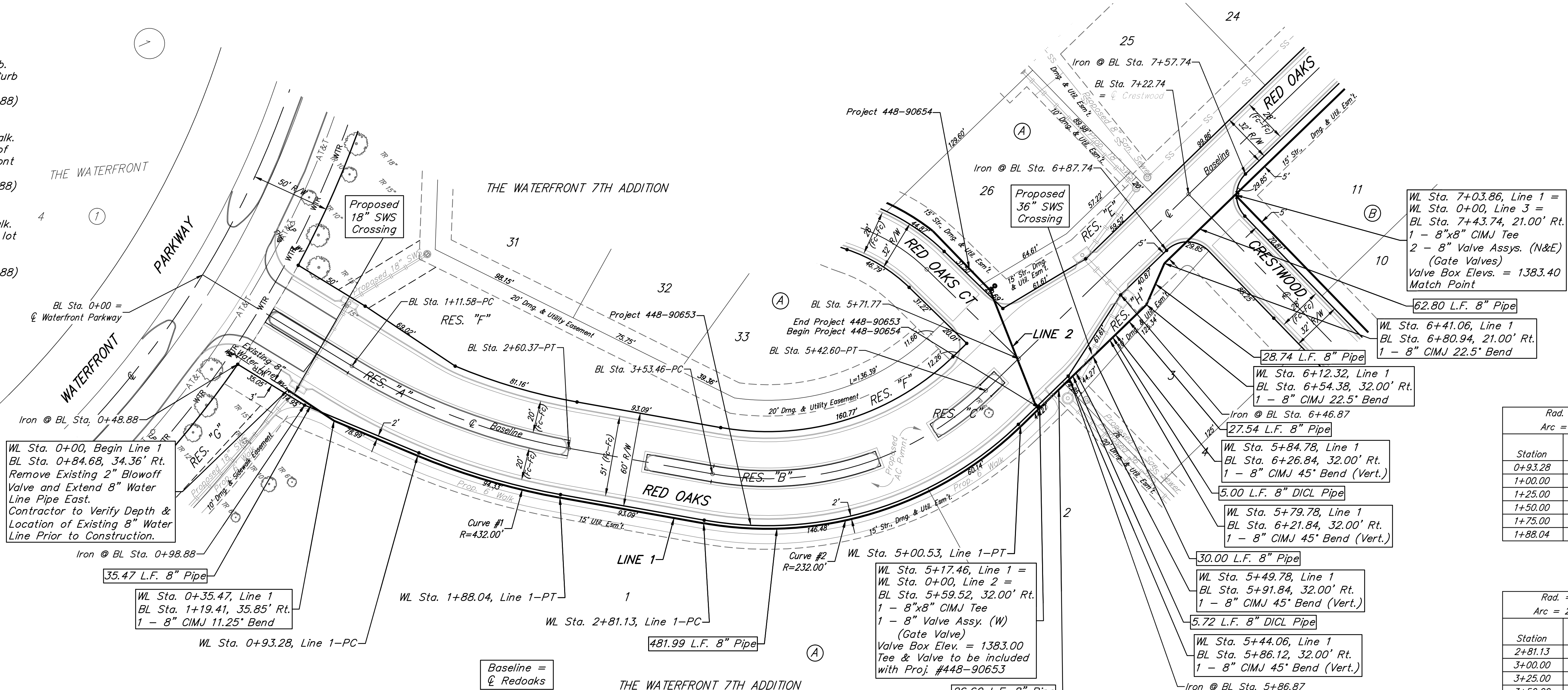


BENCHMARKS

BM #1:
 "□" Chiseled on Top of Curb.
 West End of South Median Curb
 within Castlewood
 Elevation = 1380.50 (NAVD 88)

BM #2
 "X" Chiseled on Back of Walk.
 Near the Southeast corner of
 Lot 2, Block A, The Waterfront
 7th Addition
 Elevation = 1381.88 (NAVD 88)

BM #3
 "□" Chiseled on Back of Walk.
 Northeast corner of parking lot
 within Lot 1, Block 1, The
 Waterfront 4th Addition
 Elevation = 1389.50 (NAVD 88)



WL Sta. 0+00, Begin Line 1
 BL Sta. 0+84.68, 34.36' Rt.
 Remove Existing 2" Blowoff
 Valve and Extend 8" Water
 Line Pipe East.
 Contractor to Verify Depth &
 Location of Existing 8" Water
 Line Prior to Construction.

WL Sta. 0+35.47, Line 1
 BL Sta. 1+19.41, 35.85' Rt.
 1 - 8" CIMJ 11.25' Bend

WL Sta. 0+93.28, Line 1-PC

35.47 L.F. 8" Pipe

WL Sta. 1+88.04, Line 1-PT

WL Sta. 2+81.13, Line 1-PC

481.99 L.F. 8" Pipe

WL Sta. 5+17.46, Line 1 =
 WL Sta. 0+00, Line 2 =
 BL Sta. 5+59.52, 32.00' Rt.
 1 - 8"x8" CIMJ Tee
 1 - 8" Valve Assy. (W)
 (Gate Valve)
 Valve Box Elev. = 1383.00

WL Sta. 5+49.78, Line 1
 BL Sta. 5+91.84, 32.00' Rt.
 1 - 8" CIMJ 45' Bend (Vert.)

WL Sta. 5+79.78, Line 1
 BL Sta. 6+21.84, 32.00' Rt.
 1 - 8" CIMJ 45' Bend (Vert.)

WL Sta. 5+84.78, Line 1
 BL Sta. 6+26.84, 32.00' Rt.
 1 - 8" CIMJ 45' Bend (Vert.)

WL Sta. 6+12.32, Line 1
 BL Sta. 6+54.38, 32.00' Rt.
 1 - 8" CIMJ 22.5' Bend

WL Sta. 6+41.06, Line 1
 BL Sta. 6+80.94, 21.00' Rt.
 1 - 8" CIMJ 22.5' Bend

WL Sta. 7+03.86, Line 1 =
 WL Sta. 0+00, Line 3 =
 BL Sta. 7+43.74, 21.00' Rt.
 1 - 8"x8" CIMJ Tee
 2 - 8" Valve Assys. (N&E)
 (Gate Valves)
 Valve Box Elevs. = 1383.40
 Match Point

62.80 L.F. 8" Pipe

28.74 L.F. 8" Pipe

27.54 L.F. 8" Pipe

30.00 L.F. 8" Pipe

5.72 L.F. 8" DICL Pipe

5.00 L.F. 8" DICL Pipe

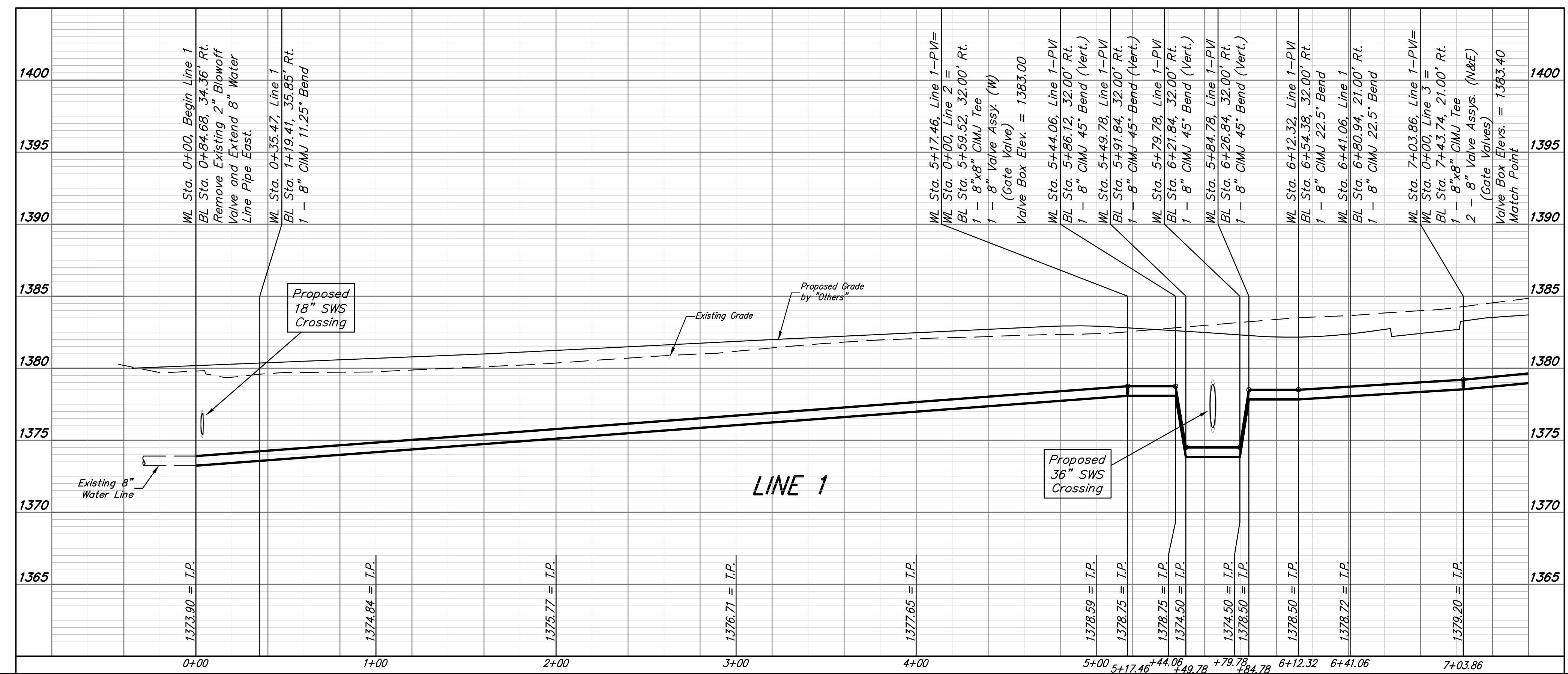
26.60 L.F. 8" Pipe

Curve #1
 Curve Data Based on Centerline of Pipe
 Rad. = 432' Delta = 123°06' Tangent = 47.57'
 Arc = 94.76' L.C. = 94.57' Def./Ft. = 3.97900 Min.

Station	Arc	Chord 8' Right	Defl.	Total Defl.
0+93.28	-	-	0°00'00"	0°00'00"
1+00.00	6.72'	6.84'	0°26'44"	0°26'44"
1+25.00	25.00'	25.46'	1°39'29"	2°06'13"
1+50.00	25.00'	25.46'	1°39'29"	3°45'41"
1+75.00	25.00'	25.46'	1°39'29"	5°25'10"
1+88.04	13.04'	13.28'	0°51'53"	6°17'03"

Curve #2
 Curve Data Based on Centerline of Pipe
 Rad. = 232' Delta = 54°11'04" Tangent = 118.68'
 Arc = 219.40' L.C. = 211.32' Def./Ft. = 7.40899 Min.

Station	Arc	Chord 8' Right	Defl.	Total Defl.
2+81.13	-	-	0°00'00"	0°00'00"
3+00.00	18.87'	19.52'	2°19'48"	2°19'48"
3+25.00	25.00'	25.85'	3°05'14"	5°25'02"
3+50.00	25.00'	25.85'	3°05'13"	8°30'15"
3+75.00	25.00'	25.85'	3°05'14"	11°35'29"
4+00.00	25.00'	25.85'	3°05'13"	14°40'42"
4+25.00	25.00'	25.85'	3°05'14"	17°45'56"
4+50.00	25.00'	25.85'	3°05'13"	20°51'09"
4+75.00	25.00'	25.85'	3°05'14"	23°56'23"
5+00.00	25.00'	25.85'	3°05'13"	27°01'36"
5+00.53	0.53'	0.55'	0°03'56"	27°05'32"



Baughman The Waterfront 7th Addition
LINE 1
 Water Distribution System

Baughman Company, P.A. 315 Ellis St. Wichita, KS 67211 P 316-262-7271 F 316-262-0149
 ENGINEERING | SURVEYING | PLANNING | LANDSCAPE ARCHITECTURE

PROJECT NUMBER	DESIGN	DRAWN
REVISIONS:	AEG	JAK
	APPROVED	DATE
		1/08/15
	SCALE	
	Noted	
	SHEET	

4 OF 16

E:\Projects\Waterfront Seventh Addition_1307P967\Engineering\Phase 1\Wtr_1409E118\WTR PLANS.dwg