

BENCHMARKS

BM #1:
 "□" Chiseled on Top of Curb.
 West End of South Median Curb
 within Castlewood
 Elevation = 1380.50 (NAVD 88)

BM #2
 "X" Chiseled on Back of Walk.
 Near the Southeast corner of
 Lot 2, Block A, The Waterfront
 7th Addition
 Elevation = 1381.88 (NAVD 88)

BM #3
 "□" Chiseled on Back of Walk.
 Northeast corner of parking lot
 within Lot 1, Block 1, The
 Waterfront 4th Addition
 Elevation = 1389.50 (NAVD 88)

- EB □ = Electric Box
- AT&T Ped □ = AT&T Pedestal
- CP ○ = Cable TV Pedestal
- Underground Electric UGE
- AT&T AT&T
- Cable TV CaTV

Sta. 0+00, Begin Line 1
 Const. Core Existing Manhole and
 Extend 8" Pipe East
 Contractor to Verify Depth
 and Location of Existing
 Manhole Prior to Construction.
 Top Elev. = 1385.10

CAUTION!
 Existing Underground Elec., CaTV,
 and Telephone Lines Nearby.

THE WATERFRONT
 4TH ADDITION

Sta. 0+77.5, Line 1
 Const. Standard Manhole
 Top Elev. = 1384.90

Remove, Do Not Replace, Existing Fence
 Only as Necessary for Construction. Cost
 to be Included in Bid Item "Site Clearing"

Sta. 2+20.5, Line 1
 Const. Standard Manhole
 Top Elev. = 1386.10

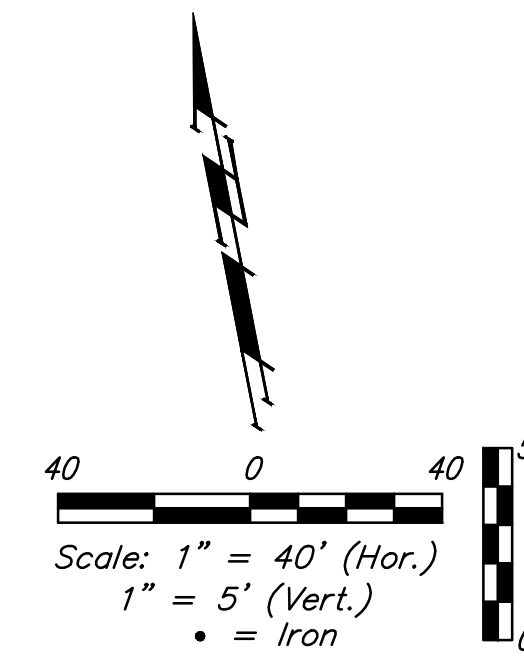
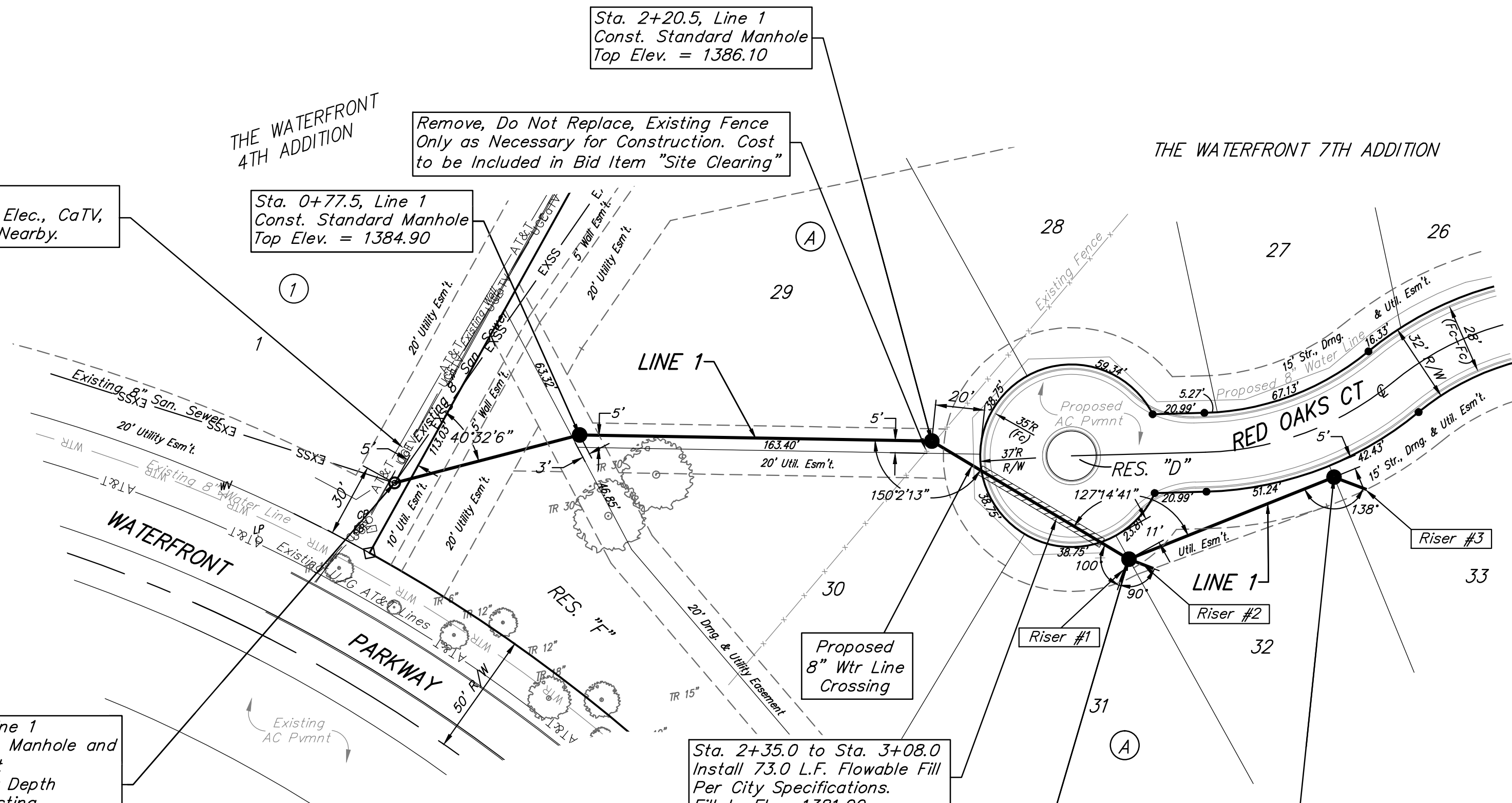
THE WATERFRONT 7TH ADDITION

Sta. 2+35.0 to Sta. 3+08.0
 Install 73.0 L.F. Flowable Fill
 Per City Specifications.
 Fill to Elev. 1381.00

Sta. 3+13.7, Line 1
 Const. Standard Manhole
 2-4" Stubs w/ Risers
 (SE&SW)
 Top Elev. = 1385.50

Sta. 4+03.3, End Line 1
 Const. Standard Manhole
 1-4" Stub w/Riser (SE)
 Top Elev. = 1384.40

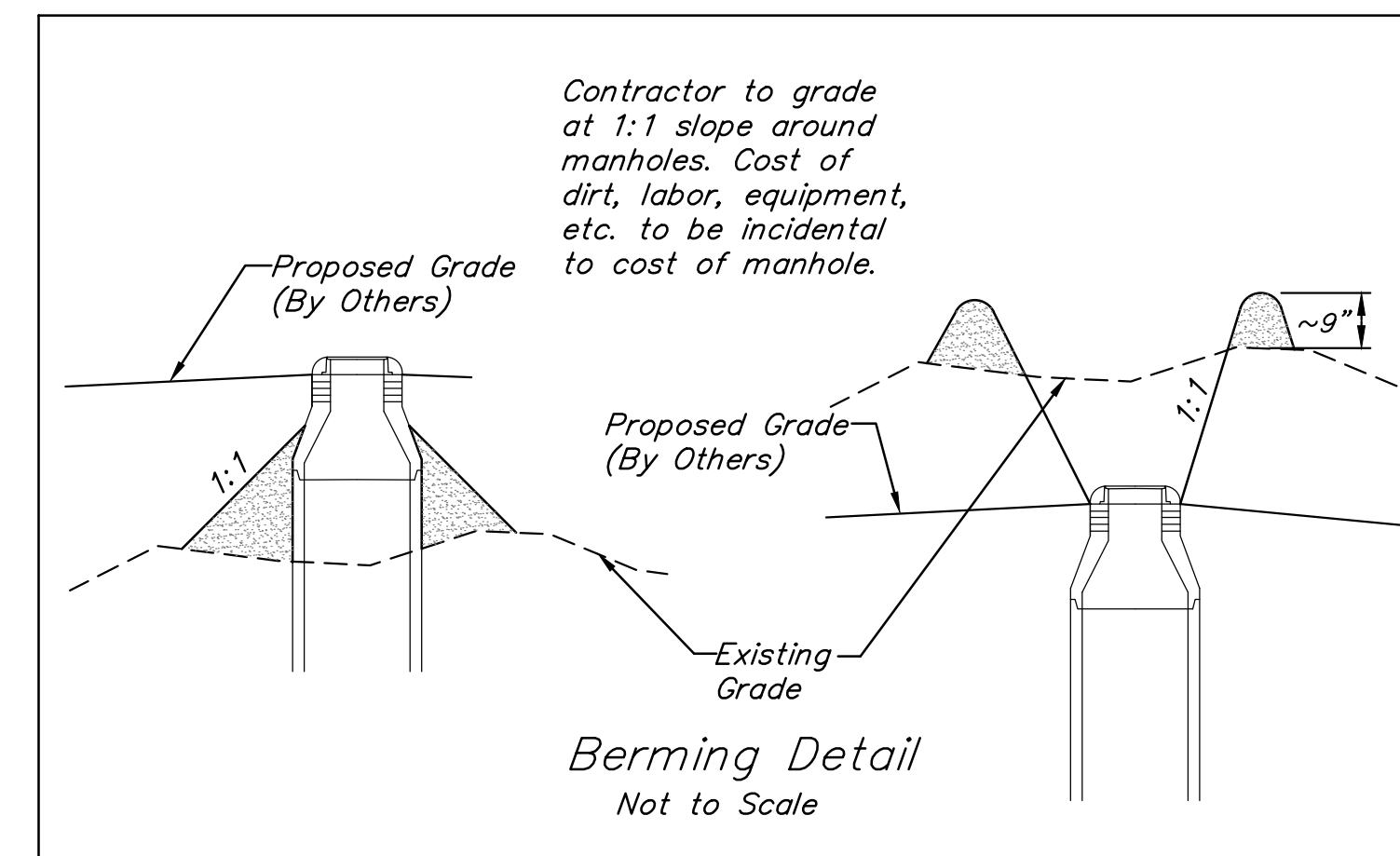
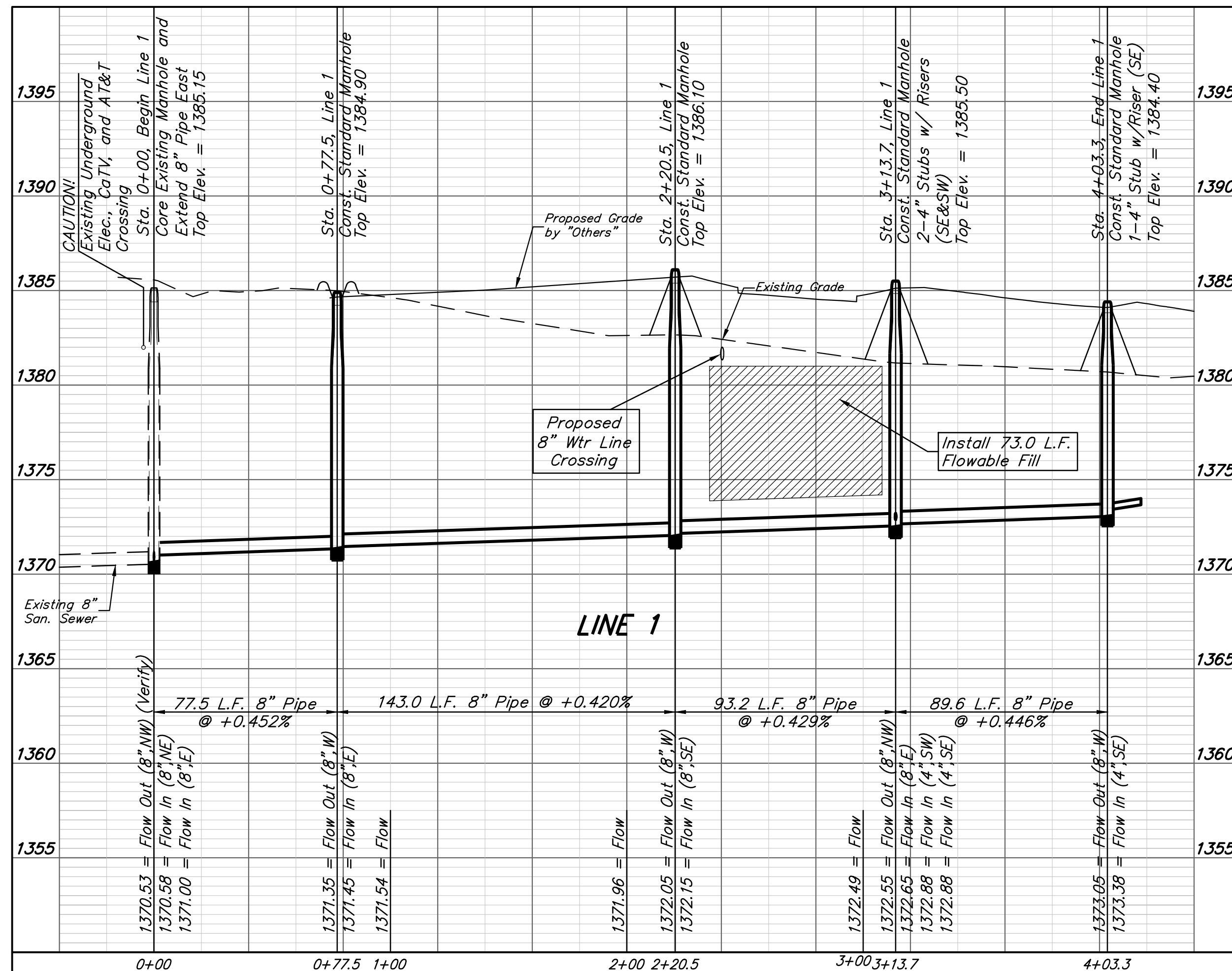
The Contractor shall be required to
 backfill trench with sand from Sta.
 3+13.7 to Sta. 4+03.3, Line 1
 To be bid as "L.F. Sand Backfill Jetted
 and Vibrated"



SEWER SERVICE TABLE

NUMBER	TYPE	LOCATION				FOR INFORMATION ONLY	
		LOT NO.	BLOCK NO.	LINE NO.	STATION/ DIRECTION	APPROXIMATE LENGTH 4" PIPE	
1	4" Stub w/Riser	31	A	1	3+13.7/Rt.	8'	10.5'
2	4" Stub w/Riser	32	A	1	3+13.7/Rt.	8'	6.5'
2	4" Stub w/Riser	33	A	1	4+03.3/Rt.	6.5'	14'

NOTE: Vertical Riser Pipe shall be extended to 2' minimum above ground water elevation and 4' maximum below proposed ground elevation.



Baughman

The Waterfront 7th Addition
LINE 1
 Sanitary Sewer Improvements

Baughman Company, P.A. 315 Ellis St. Wichita, KS 67211 P 316-262-7271 F 316-263-0149
 ENGINEERING | SURVEYING | PLANNING | LANDSCAPE ARCHITECTURE

PROJECT NUMBER	DESIGN AEG	DRAWN JAK
REVISIONS:	APPROVED	DATE 1/07/15
	SCALE Noted	SHEET

2 OF 16