

# BENCHMARKS

BM #1:  
"□" Chiseled on Top of Curb.  
West End of South Median Curb  
within Castlewood  
Elevation = 1380.50 (NAVD 88)

BM #2  
"X" Chiseled on Back of Walk.  
Near the Southeast corner of  
Lot 2, Block A, The Waterfront  
7th Addition  
Elevation = 1381.88 (NAVD 88)

BM #3  
"□" Chiseled on Back of Walk.  
Northeast corner of parking lot  
within Lot 1, Block 1, The  
Waterfront 4th Addition  
Elevation = 1389.50 (NAVD 88)

- EB □ = Electric Box
- AT&T Ped □ = AT&T Pedestal
- CP ○ = Cable TV Pedestal
- Underground Electric UGE
- AT&T AT&T
- Cable TV CoTV

### SEWER SERVICE TABLE

NUMBER	TYPE	LOCATION			FOR INFORMATION ONLY		
		LOT NO.	BLOCK NO.	LINE NO.	STATION/DIRECTION	APPROXIMATE LENGTH 4" PIPE	VERTICAL
4	8" X 4" Tee	28	A	2	0+65.0/Rt.	7.5'	41.5'
5	8" X 4" Tee	27	A	2	0+45.0/Rt.	7'	41.5'
6	8" X 4" Tee	26	A	2	0+40.0/Rt.	5'	23'
7	4" Stub w/Riser	24	A	2	3+00.5/Lt.	6.5'	11'
8	4" Stub w/Riser	23	A	2	3+00.5/Lt.	6.5'	11'
9	4" Stub w/Riser	22	A	2	3+75.0/Lt.	6.5'	10.5'
10	4" Stub w/Riser	21	A	2	4+44.1/Lt.	7'	9.5'
11	4" Stub w/Riser	20	A	2	5+13.9/Lt.	8.5'	14'
12	8" X 4" Tee	19	A	2	6+04.0/Lt.	8'	10'
13	4" Stub w/Riser	18	A	2	7+53.9/Lt.	10.5'	14'
14	4" Stub w/Riser	17	A	2	7+53.9/Lt.	10.5'	14'

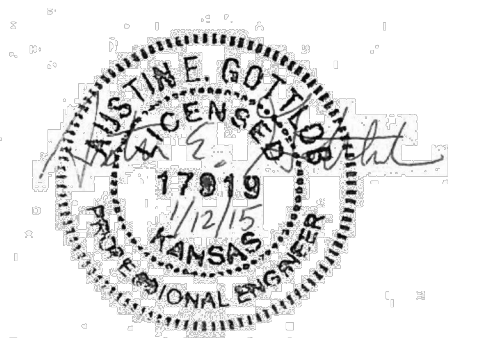
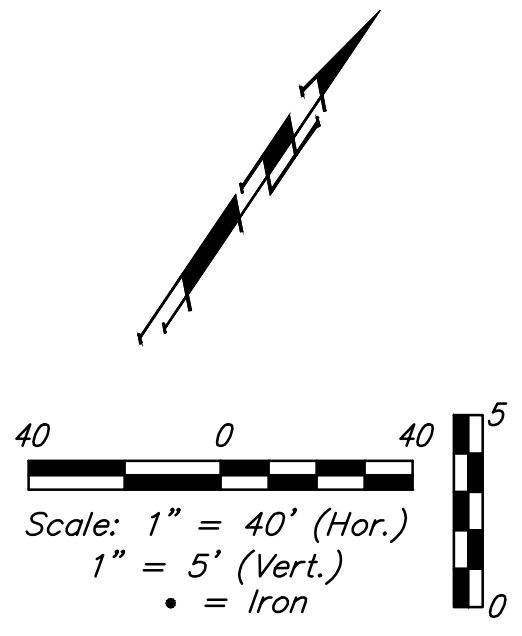
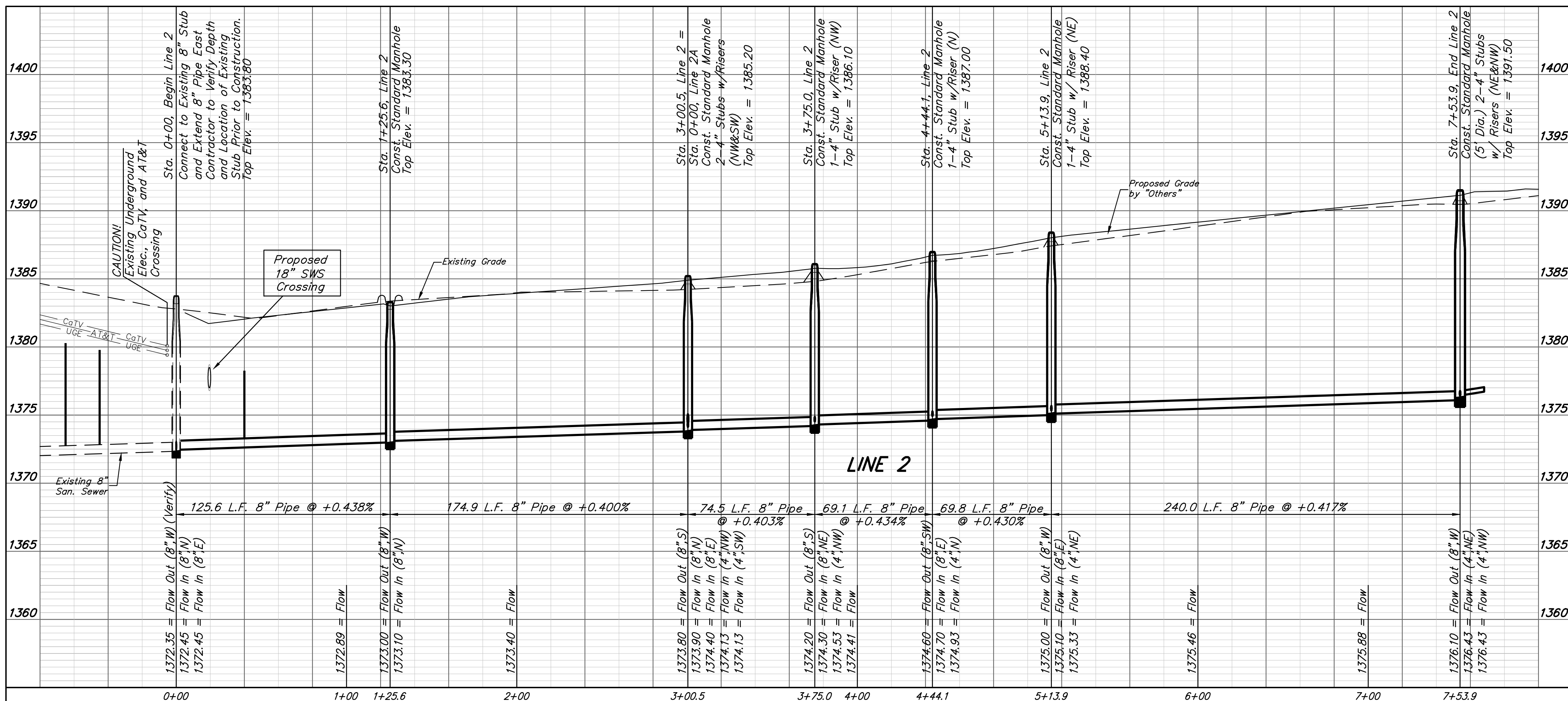
NOTE: Vertical Riser Pipe shall be extended to 2' minimum above ground water elevation and 4' maximum below proposed ground elevation.

**CAUTION!**  
Existing Underground Elec., CoTV, and AT&T Crossing

Sta. 0+00, Line 2  
Connect to Existing 8" Stub and Extend 8" Pipe East Contractor to Verify Depth and Location of Existing Stub Prior to Construction.  
Top Elev. = 1383.80

Proposed 18" SWS Crossing

The Contractor shall be required to backfill trench with sand from Sta. 1+25.6 to Sta. 7+53.9, Line 2. To be bid as "L.F. Sand Backfill Jetted and Vibrated"



		The Waterfront 7th Addition	
		LINE 2 Sanitary Sewer Improvements	
<small>Baughman Company, P.A. 315 Ellis St. Wichita, KS 67211 P 316-262-7271 F 316-262-0149 ENGINEERING   SURVEYING   PLANNING   LANDSCAPE ARCHITECTURE</small>			
PROJECT NUMBER	DESIGN	DRAWN	
REVISIONS:	AEG	JAK	
	APPROVED	DATE	
	Noted	1/07/15	
	SHEET		
		3 OF 16	