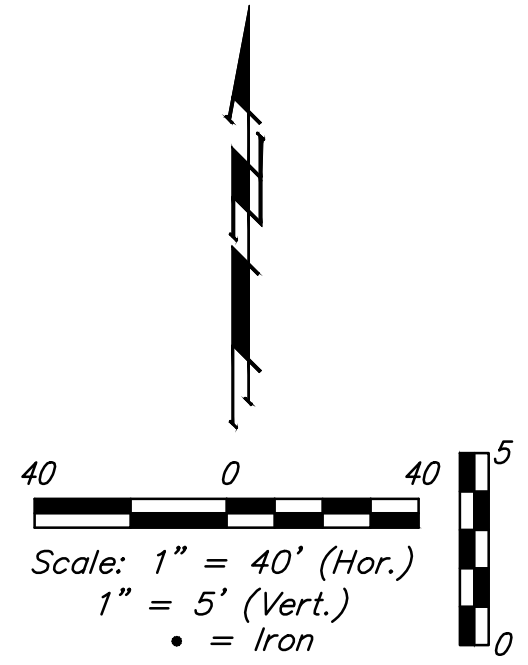
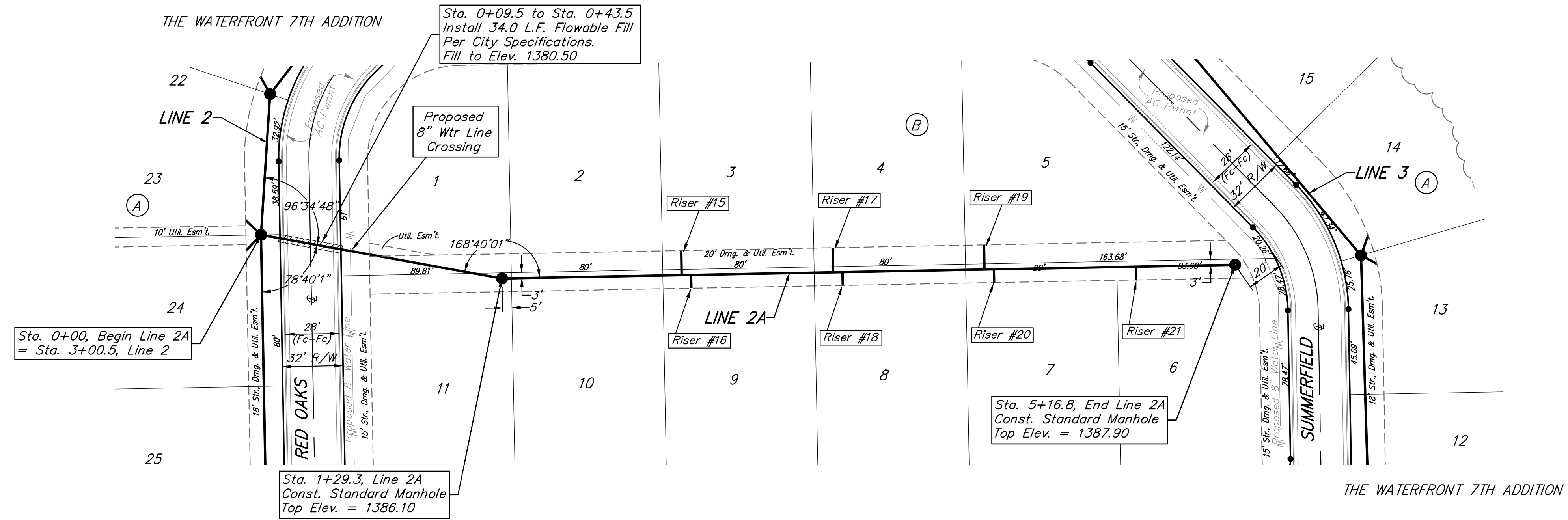


# BENCHMARKS

BM #1:  
 "□" Chiseled on Top of Curb.  
 West End of South Median Curb  
 within Castlewood  
 Elevation = 1380.50 (NAVD 88)

BM #2  
 "X" Chiseled on Back of Walk.  
 Near the Southeast corner of  
 Lot 2, Block A, The Waterfront  
 7th Addition  
 Elevation = 1381.88 (NAVD 88)

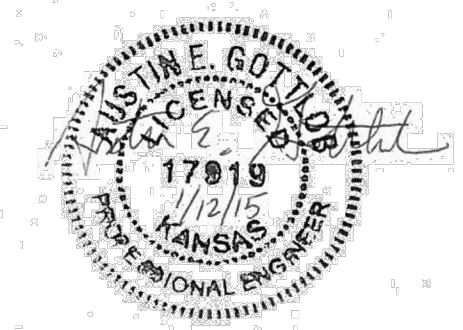
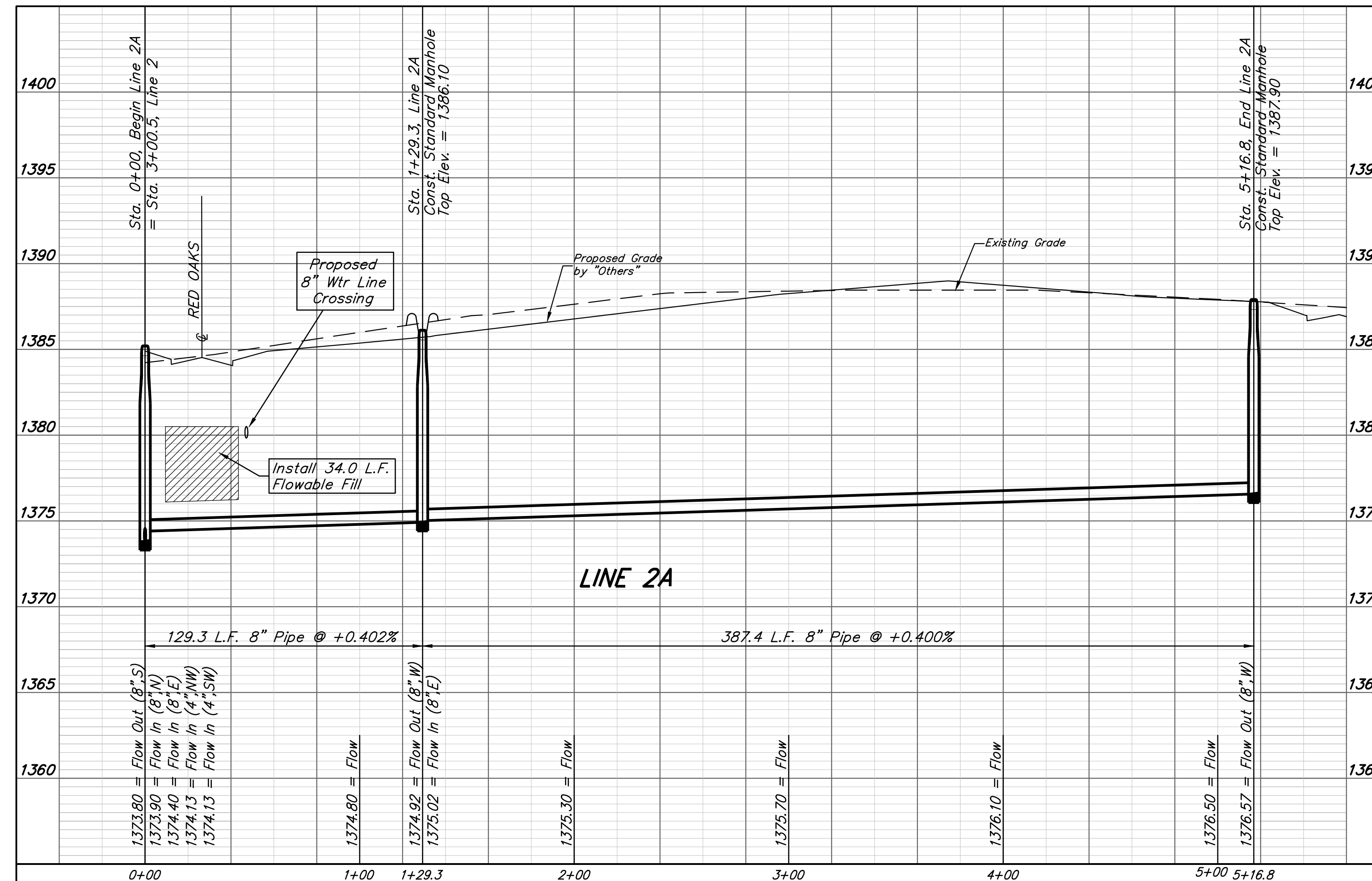
BM #3  
 "□" Chiseled on Back of Walk.  
 Northeast corner of parking lot  
 within Lot 1, Block 1, The  
 Waterfront 4th Addition  
 Elevation = 1389.50 (NAVD 88)



SEWER SERVICE TABLE

NUMBER	TYPE	LOCATION			FOR INFORMATION ONLY	
		LOT NO.	BLOCK NO.	LINE NO.	STATION/DIRECTION	APPROXIMATE LENGTH 4" PIPE
15	8" X 4" Tee	3	B	2A	2+24.0/Lt.	7' 13'
16	8" X 4" Tee	9	B	2A	2+29.0/Rt.	7' 7'
17	8" X 4" Tee	4	B	2A	3+04.0/Lt.	8' 13'
18	8" X 4" Tee	8	B	2A	3+09.0/Rt.	7.5' 7'
19	8" X 4" Tee	5	B	2A	3+84.0/Lt.	6.5' 13'
20	8" X 4" Tee	7	B	2A	3+89.0/Rt.	5' 7'
21	8" X 4" Tee	6	B	2A	4+64.0/Rt.	3' 7'

NOTE: Vertical Riser Pipe shall be extended to 2' minimum above ground water elevation and 4' maximum below proposed ground elevation.



**Baughman** The Waterfront 7th Addition  
**LINE 2A**  
 Sanitary Sewer Improvements

Baughman Company, P.A. 315 Ellis St. Wichita, KS 67211 P 316-262-7271 F 316-262-0149  
 ENGINEERING | SURVEYING | PLANNING | LANDSCAPE ARCHITECTURE

PROJECT NUMBER: \_\_\_\_\_ DESIGN: AEG DRAWN: JAK  
 APPROVED: \_\_\_\_\_ DATE: 1/07/15  
 REVISIONS: \_\_\_\_\_ SCALE: Noted  
 SHEET: \_\_\_\_\_

4 OF 16