

BENCHMARKS

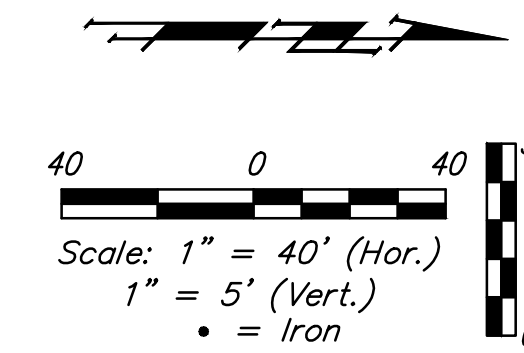
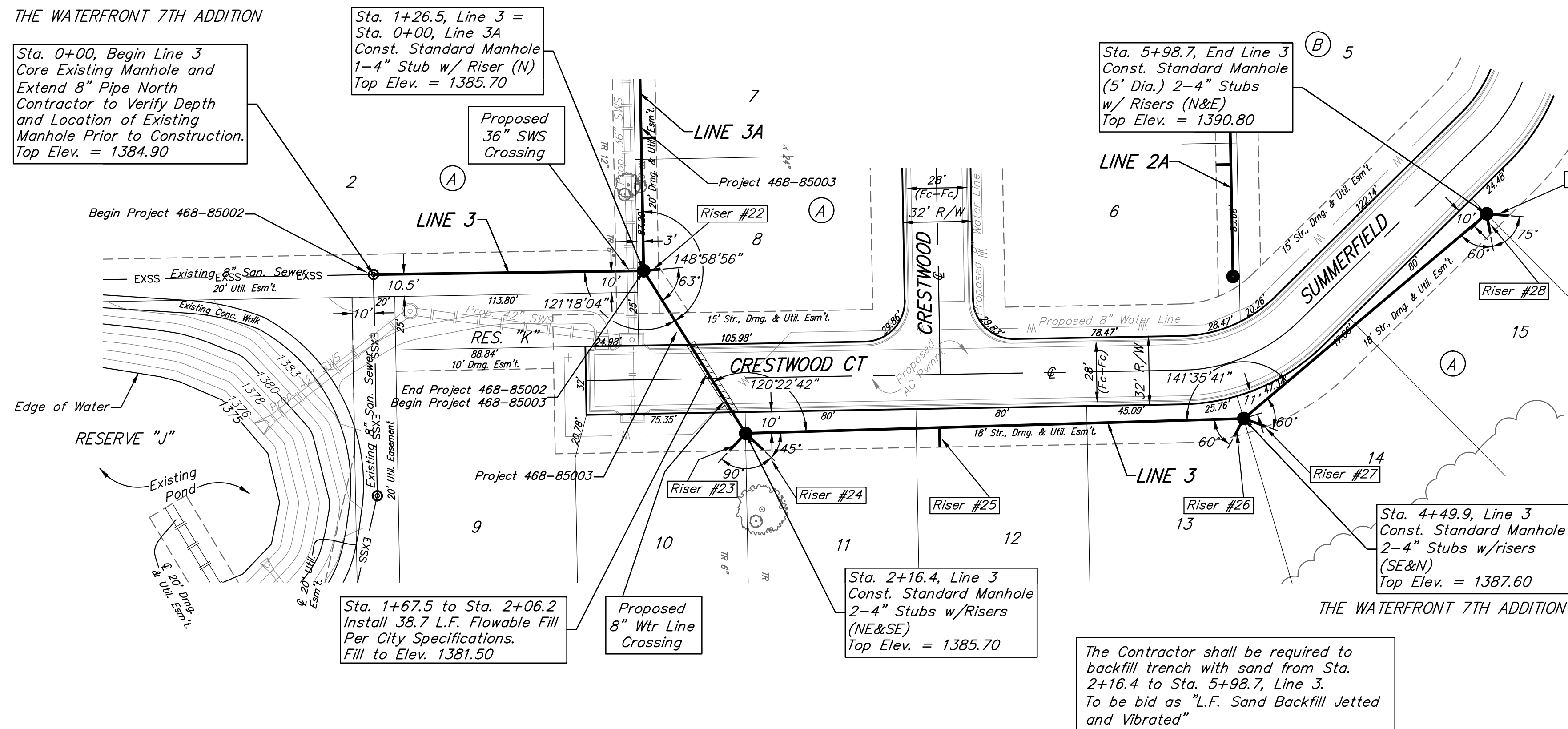
BM #1:
 "□" Chiseled on Top of Curb.
 West End of South Median Curb
 within Castlewood
 Elevation = 1380.50 (NAVD 88)

BM #2
 "X" Chiseled on Back of Walk.
 Near the Southeast corner of
 Lot 2, Block A, The Waterfront
 7th Addition
 Elevation = 1381.88 (NAVD 88)

BM #3
 "□" Chiseled on Back of Walk.
 Northeast corner of parking lot
 within Lot 1, Block 1, The
 Waterfront 4th Addition
 Elevation = 1389.50 (NAVD 88)

Manhole at Sta 1+26.5, Line 3 to be
 included with Proj. 468-85002
 Stub & Riser to be included with
 Proj. 468-85003

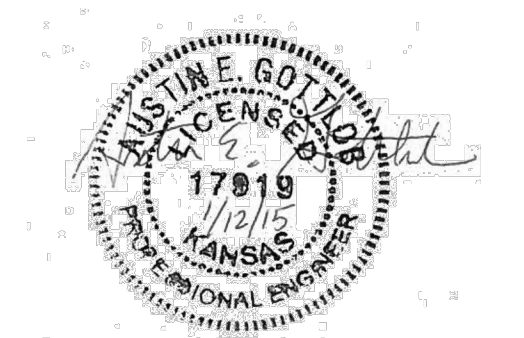
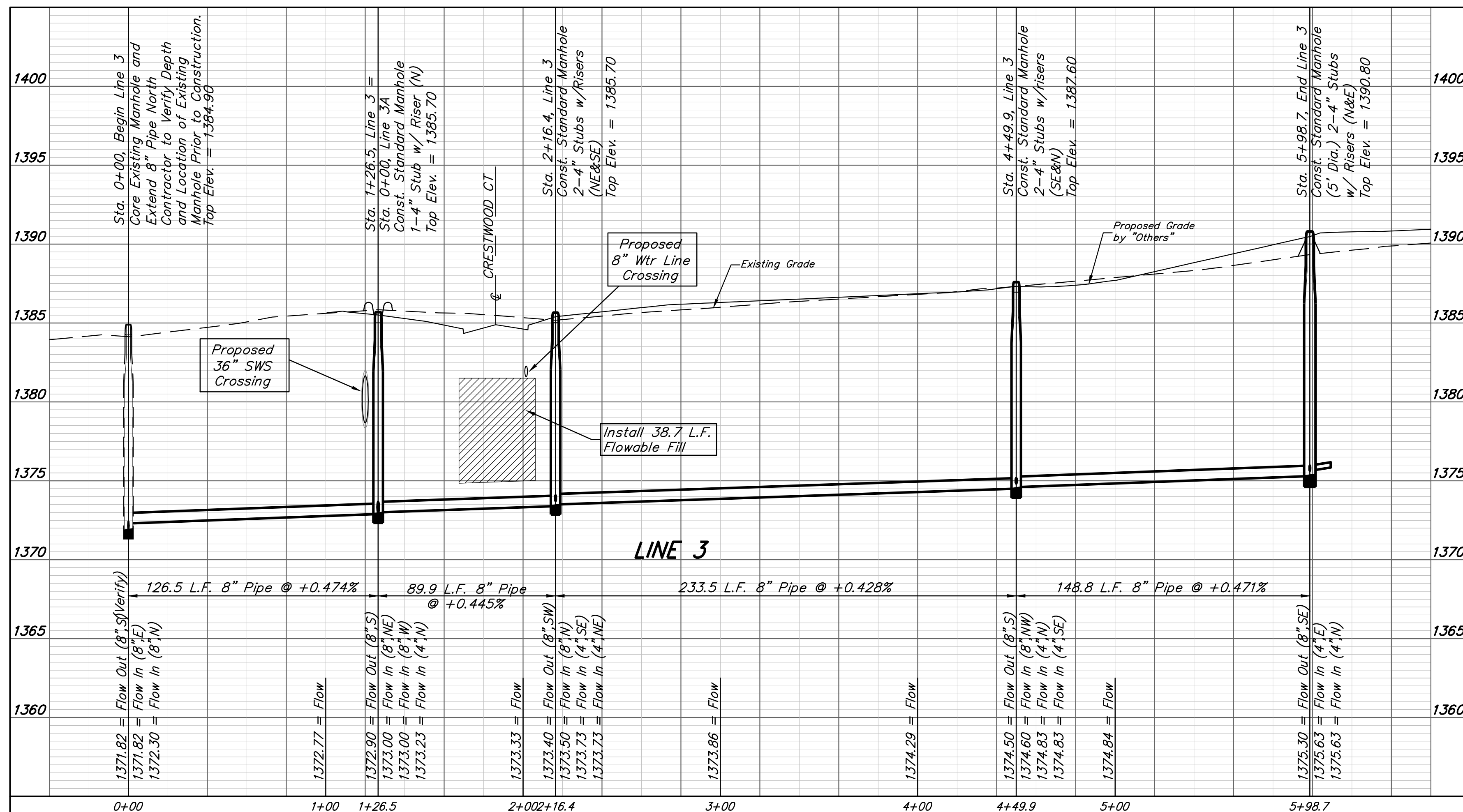
THE WATERFRONT 7TH ADDITION



SEWER SERVICE TABLE

NUMBER	TYPE	LOCATION			FOR INFORMATION ONLY		
		LOT NO.	BLOCK NO.	LINE NO.	STATION/ DIRECTION	APPROXIMATE LENGTH 4" PIPE	
22	4" Stub w/Riser	8	A	3	1+26.5/Lt.	10.5'	7'
23	4" Stub w/Riser	10	B	3	2+16.4/Rt.	8'	11.5'
24	4" Stub w/Riser	11	B	3	2+16.4/Rt.	8'	11.5'
25	8" X 4" Tee	12	A	3	3+07.3/Rt.	7.5'	9'
26	4" Stub w/Riser	13	B	3	4+49.9/Rt.	8.5'	10'
27	4" Stub w/Riser	14	B	3	4+49.9/Rt.	8.5'	10'
28	4" Stub w/Riser	15	A	3	5+98.7/Rt.	11'	10'
29	4" Stub w/Riser	16	A	3	5+98.7/Rt.	11'	10'

NOTE: Vertical Riser Pipe shall be extended to 2' minimum above ground water elevation and 4' maximum below proposed ground elevation.



Baughman

The Waterfront 7th Addition
LINE 3
 Sanitary Sewer Improvements

Baughman Company, P.A. 315 Ellis St. Wichita, KS 67211 P 316-262-7271 F 316-262-0149
 ENGINEERING | SURVEYING | PLANNING | LANDSCAPE ARCHITECTURE

PROJECT NUMBER	DESIGN	DRAWN
REVISIONS:	AEG	JAK
	APPROVED	DATE
		1/07/15
	SCALE	
	Noted	
	SHEET	

5 OF 16