

# BENCHMARKS

BM #1:  
 "□" Chiseled on Top of Curb.  
 West End of South Median Curb  
 within Castlewood  
 Elevation = 1380.50 (NAVD 88)

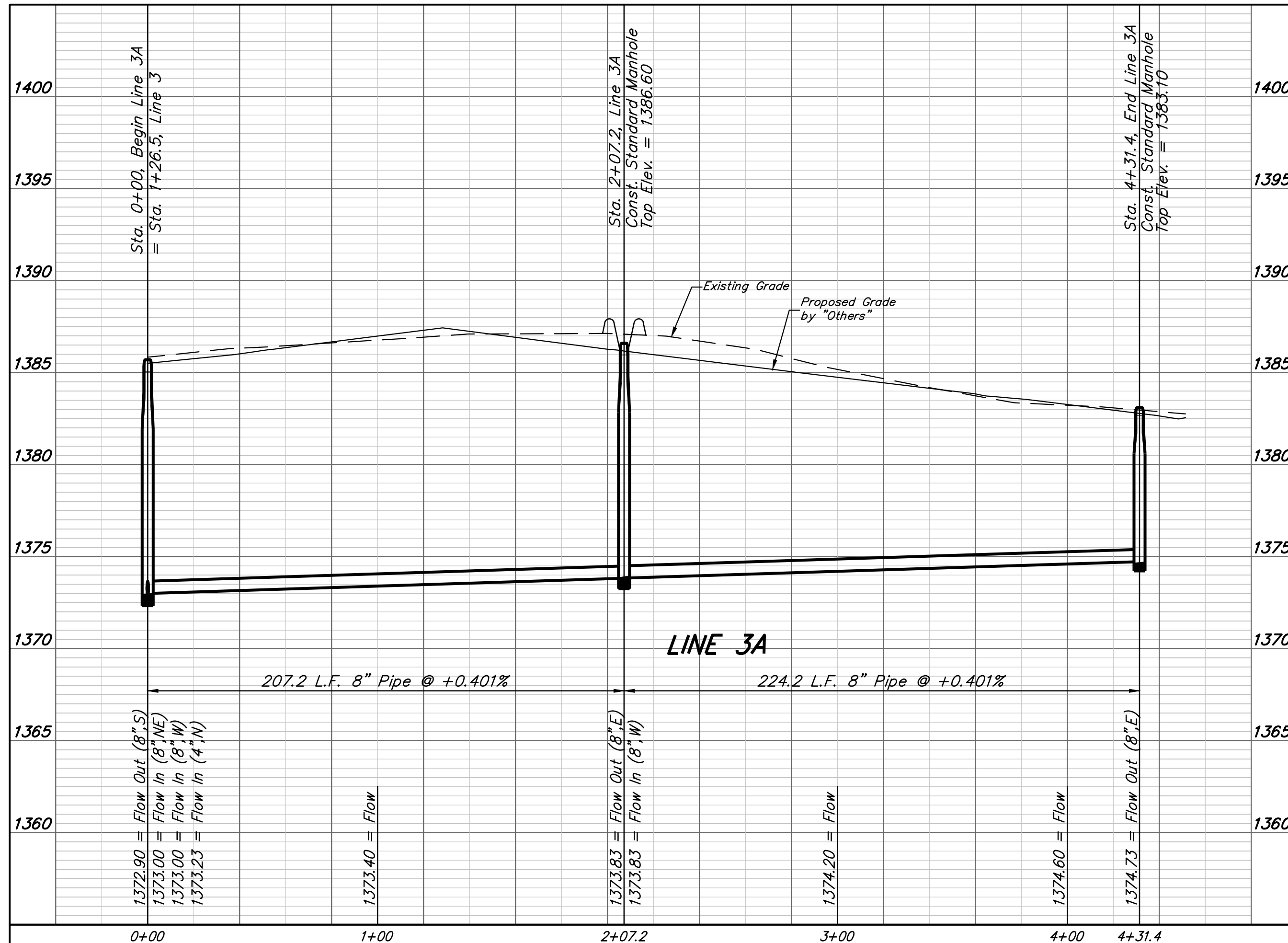
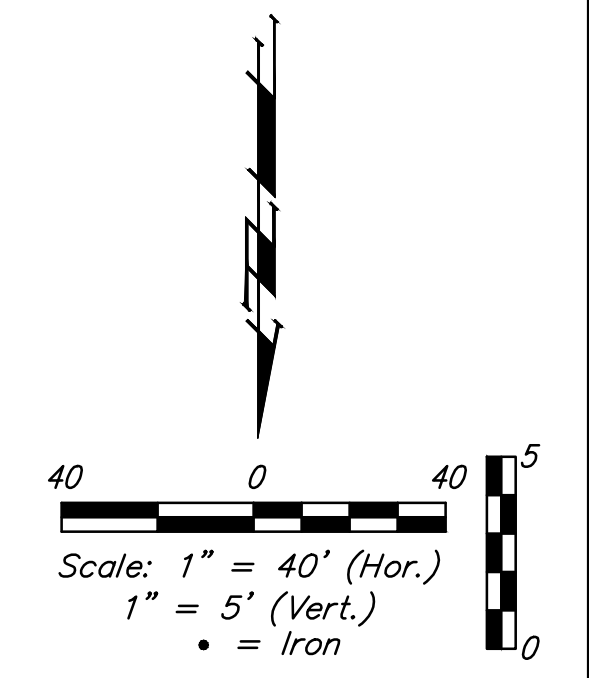
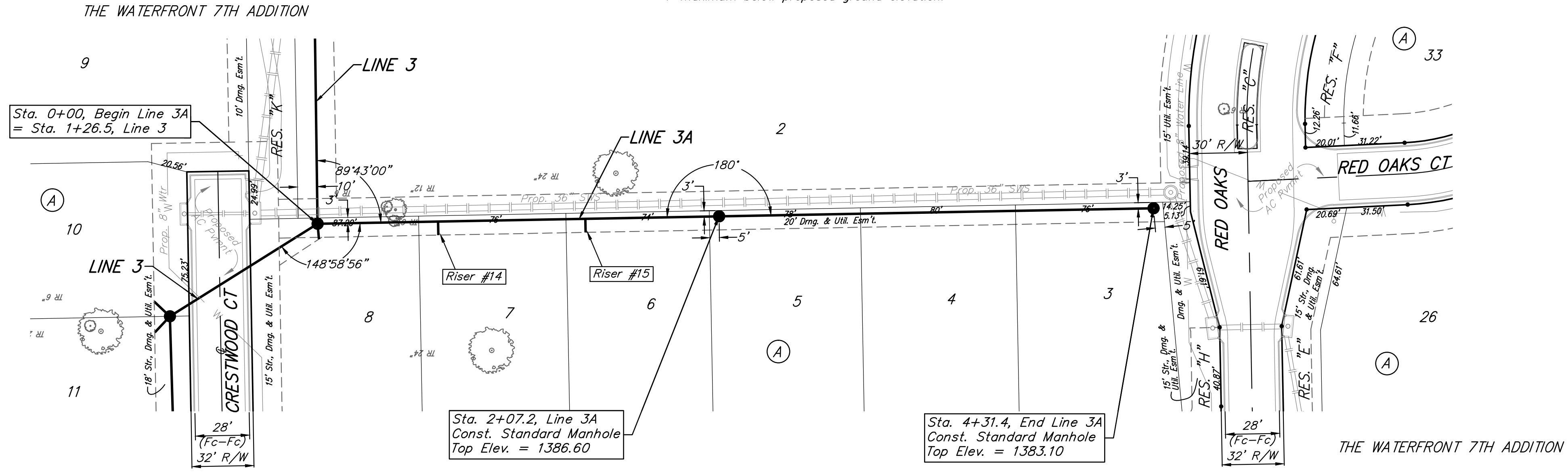
BM #2  
 "X" Chiseled on Back of Walk.  
 Near the Southeast corner of  
 Lot 2, Block A, The Waterfront  
 7th Addition  
 Elevation = 1381.88 (NAVD 88)

BM #3  
 "□" Chiseled on Back of Walk.  
 Northeast corner of parking lot  
 within Lot 1, Block 1, The  
 Waterfront 4th Addition  
 Elevation = 1389.50 (NAVD 88)

### SEWER SERVICE TABLE

NUMBER	TYPE	LOCATION			FOR INFORMATION ONLY		
		LOT NO.	BLOCK NO.	LINE NO.	STATION/DIRECTION	APPROXIMATE LENGTH 4" PIPE	VERTICAL
30	8" X 4" Tee	7	A	3A	0+62.2/Lt.	8'	7'
31	8" X 4" Tee	6	A	3A	1+38.2/Lt.	9'	7'

NOTE: Vertical Riser Pipe shall be extended to 2' minimum above ground water elevation and 4' maximum below proposed ground elevation.



		The Waterfront 7th Addition	
		<b>LINE 3A</b>	
Sanitary Sewer Improvements		Baughman Company, P.A. 315 Ellis St. Wichita, KS 67211 P 316-262-7271 F 316-262-0149 ENGINEERING   SURVEYING   PLANNING   LANDSCAPE ARCHITECTURE	
PROJECT NUMBER	DESIGN	DRAWN	
	AEG	JAK	
REVISIONS:	APPROVED	DATE	
		1/07/15	
	SCALE	NOTED	
		SHEET	
		<b>6 OF 16</b>	