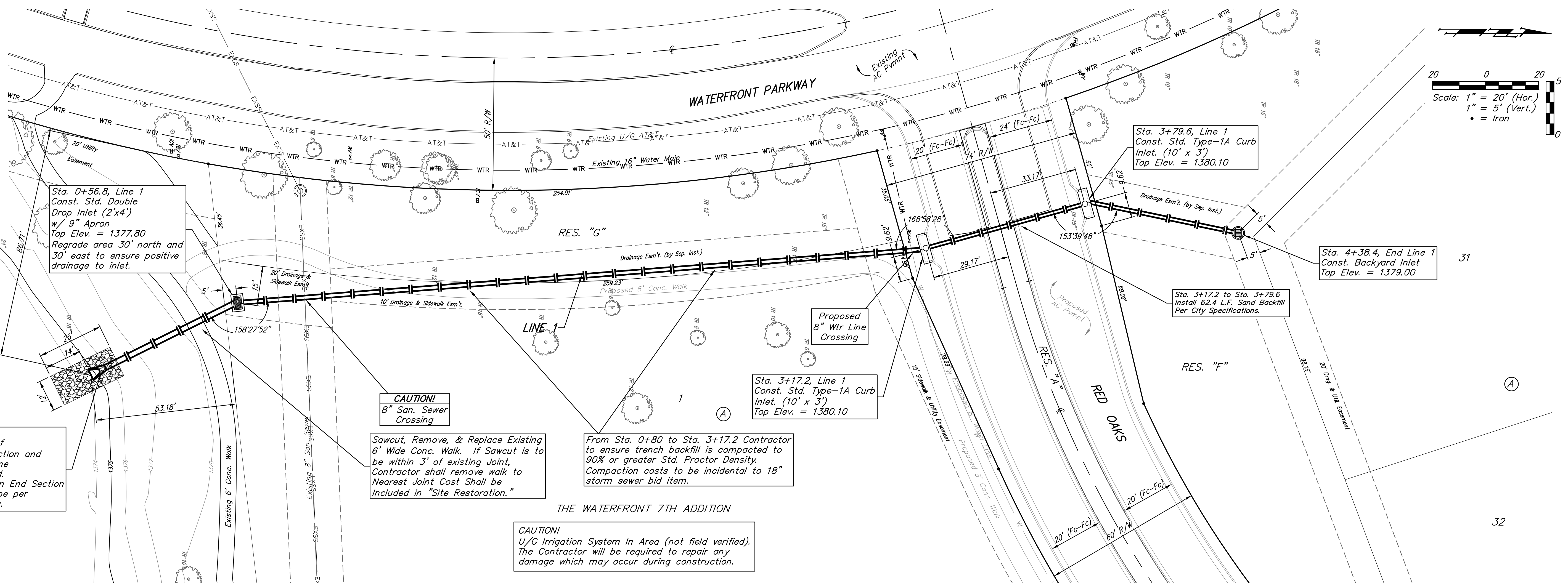


BENCHMARKS

BM #1:
 "□" Chiseled on Top of Curb.
 West End of South Median Curb
 within Castlewood
 Elevation = 1380.50 (NAVD 88)

BM #2
 "X" Chiseled on Back of Walk.
 Near the Southeast corner of
 Lot 2, Block A, The Waterfront
 7th Addition
 Elevation = 1381.88 (NAVD 88)

BM #3
 "□" Chiseled on Back of Walk.
 Northeast corner of parking lot
 within Lot 1, Block 1, The
 Waterfront 4th Addition
 Elevation = 1389.50 (NAVD 88)



Sta. 0+00, Line 1
 Begin Construction of
 24" RCP w/ End Section and
 33 S.Y. of Light Stone
 Rip-Rap as Indicated.
 Contractor to restrain End Section
 to last section of pipe per
 City of Wichita Specs.

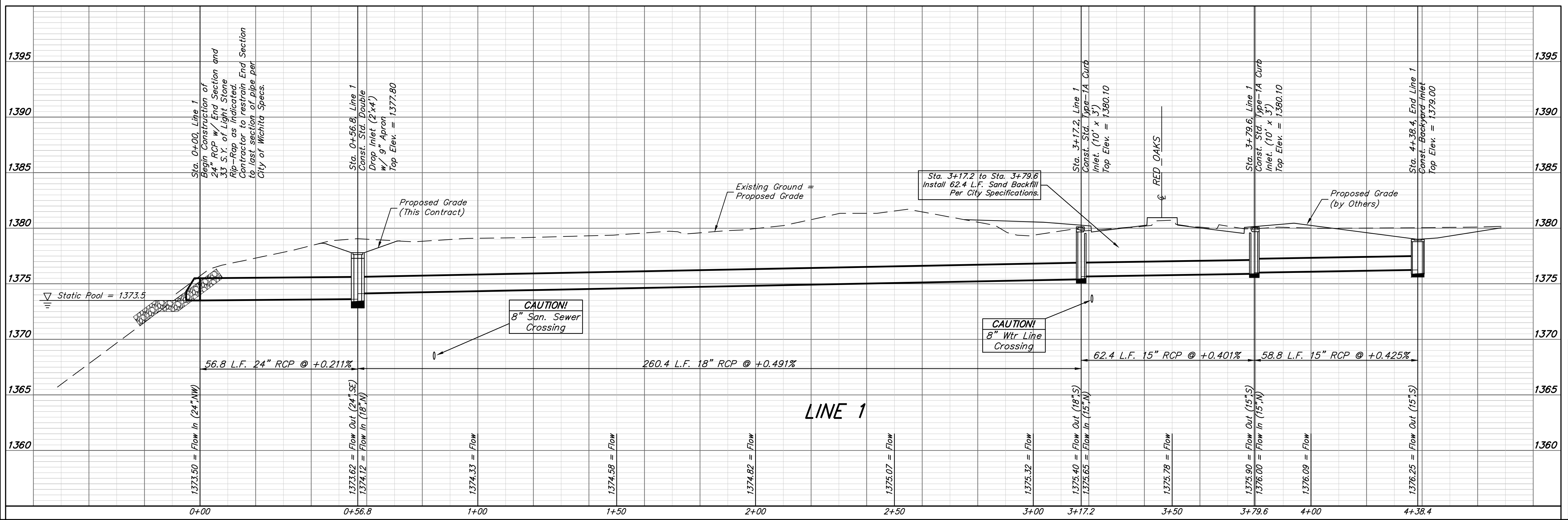
Sta. 0+56.8, Line 1
 Const. Std. Double
 Drop Inlet (2'x4')
 w/ 9" Apron
 Top Elev. = 1377.80
 Regrade area 30' north and
 30' east to ensure positive
 drainage to inlet.

CAUTION!
 8" San. Sewer
 Crossing

Sawcut, Remove, & Replace Existing
 6" Wide Conc. Walk. If Sawcut is to
 be within 3' of existing Joint,
 Contractor shall remove walk to
 Nearest Joint Cost Shall be
 Included in "Site Restoration."

From Sta. 0+80 to Sta. 3+17.2 Contractor
 to ensure trench backfill is compacted to
 90% or greater Std. Proctor Density.
 Compaction costs to be incidental to 18"
 storm sewer bid item.

CAUTION!
 U/G Irrigation System In Area (not field verified).
 The Contractor will be required to repair any
 damage which may occur during construction.



		The Waterfront 7th Addition	
		LINE 1	
Sanitary Sewer Improvements		Baughman Company, P.A. 315 Ellis St. Wichita, KS 67211 P 316-262-7271 F 316-262-0149 ENGINEERING SURVEYING PLANNING LANDSCAPE ARCHITECTURE	
PROJECT NUMBER 468-85004	DESIGN AEG	DRAWN JAK	DATE 1/12/15
REVISIONS:	APPROVED	SCALE Noted	SHEET
		2 OF 21	

E:\Projects\Waterfront Seventh Addition_1307.P067_Engineering\Phase 1\SW_1409E119\SW_PLANS.dwg