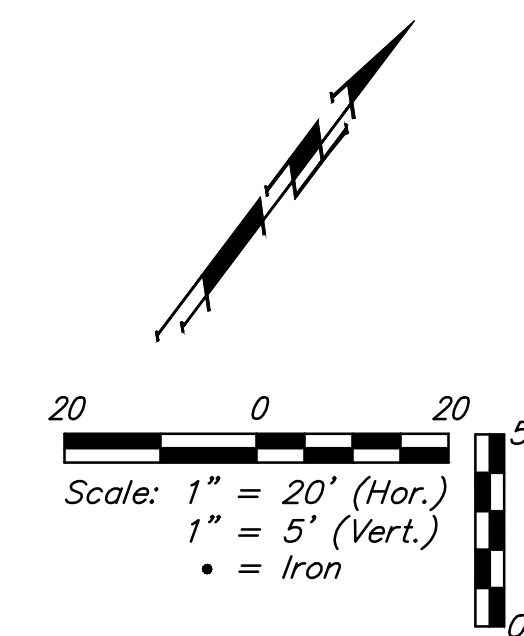
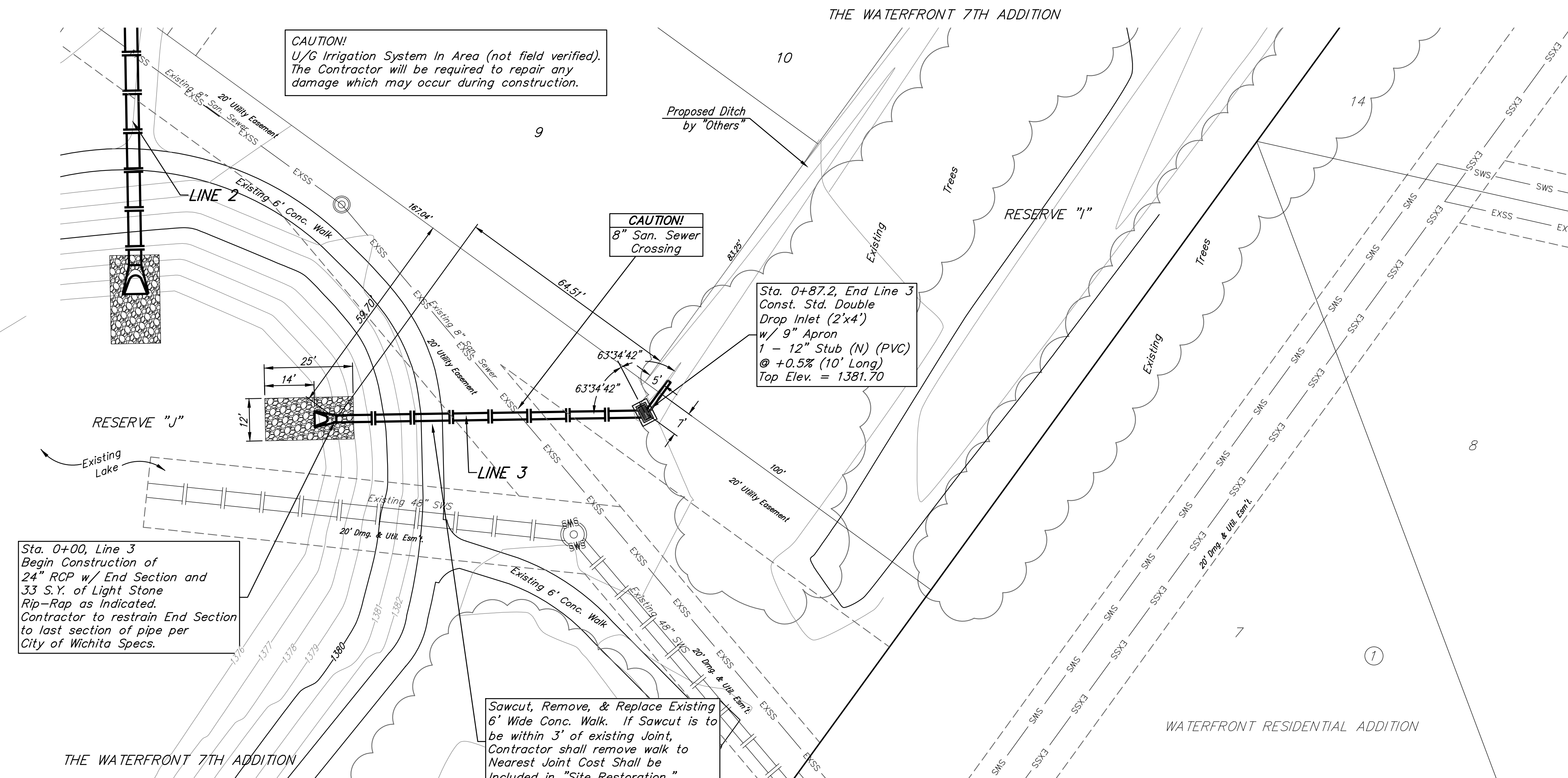


BENCHMARKS

BM #1:
 "□" Chiseled on Top of Curb.
 West End of South Median Curb
 within Castlewood
 Elevation = 1380.50 (NAVD 88)

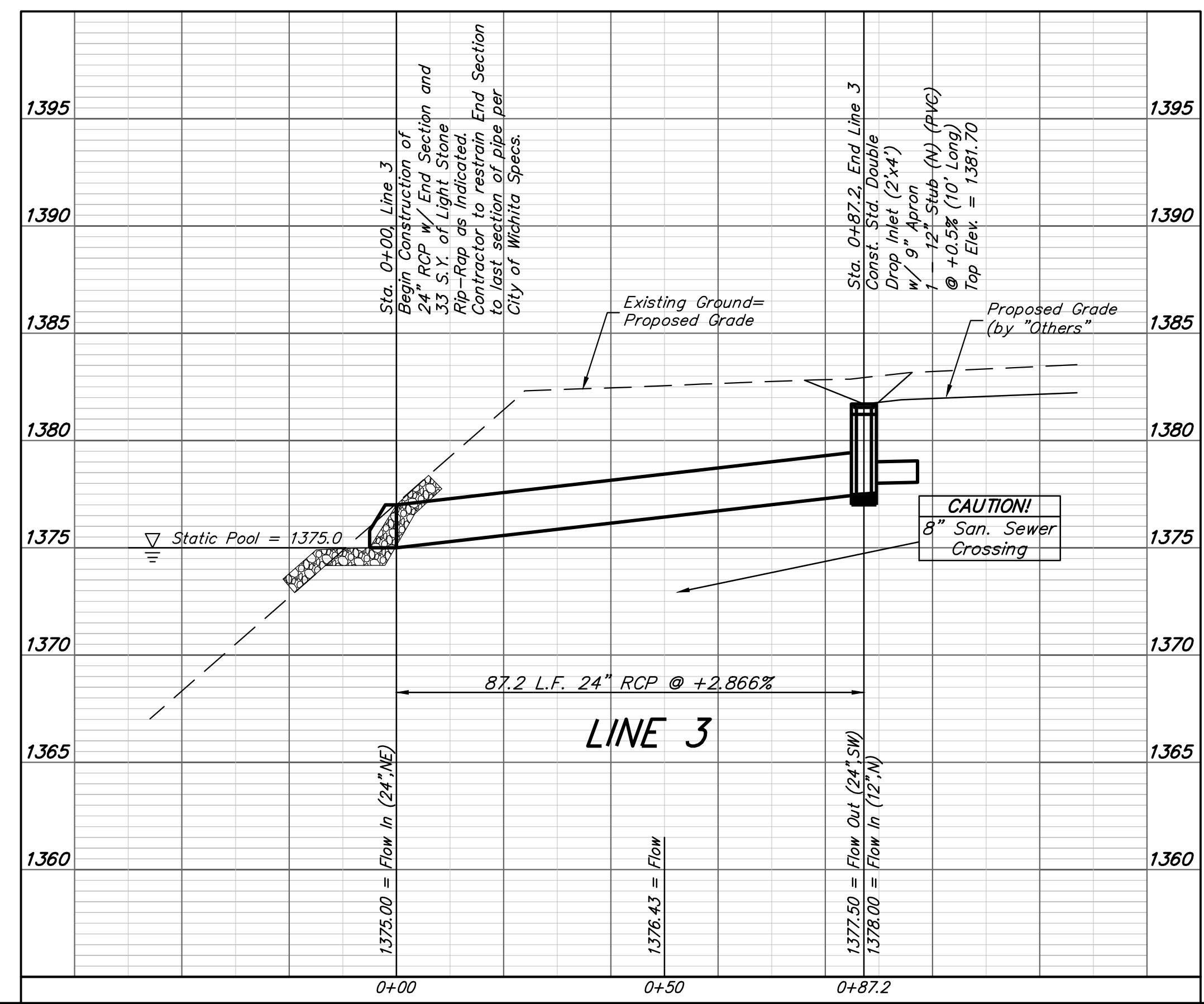
BM #2
 "X" Chiseled on Back of Walk.
 Near the Southeast corner of
 Lot 2, Block A, The Waterfront
 7th Addition
 Elevation = 1381.88 (NAVD 88)

BM #3
 "□" Chiseled on Back of Walk.
 Northeast corner of parking lot
 within Lot 1, Block 1, The
 Waterfront 4th Addition
 Elevation = 1389.50 (NAVD 88)



Sta. 0+00, Line 3
 Begin Construction of
 24" RCP w/ End Section and
 33 S.Y. of Light Stone
 Rip-Rap as Indicated.
 Contractor to restrain End Section
 to last section of pipe per
 City of Wichita Specs.

Sawcut, Remove, & Replace Existing
 6" Wide Conc. Walk. If Sawcut is to
 be within 3" of existing Joint,
 Contractor shall remove walk to
 Nearest Joint Cost Shall be
 Included in "Site Restoration."



	The Waterfront 7th Addition	
	LINE 3 Sanitary Sewer Improvements	
Baughman Company, P.A. 315 Ellis St. Wichita, KS 67211 P 316-262-7271 F 316-262-0149 ENGINEERING SURVEYING PLANNING LANDSCAPE ARCHITECTURE		
PROJECT NUMBER 468-85004	DESIGN AEG	DRAWN JAK
REVISIONS:	APPROVED DATE 1/12/15	SCALE Noted SHEET
		7 OF 21