

**Benchmarks:**  
 BM #1: "□" Cut with Cross in Curb  
 Return at Southeast Corner of  
 Intersection of 37th St. N. and Tyler,  
 Approximately 47' South and 49.5' East  
 of the Center of the Intersection.  
 Elevation = 1343.53 (NAVD 88)

BM #2: "□" Cut with Cross in South  
 Curb Line of 37th St. N. Approximately  
 41.5' South and 1,026' East of the  
 Center of the Intersection of 37th St.  
 N. and Tyler.  
 Elevation = 1337.39 (NAVD 88)

W.L. Sta. 0+00.00 Begin Line 1  
 = B.L. Sta. -0+54.03, Rt. 21'  
 1-16" x 8" Tapping Saddle  
 1-8" Valve Assy. (E)  
 (Gate Valve)  
 Tapping Saddle, Tapping Valve,  
 and Valve box to be furnished  
 and installed by City of Wichita  
 Water Department.

**NOTE**  
 Contractor to Verify  
 Location and Depth of  
 Existing 16" Water Line  
 Prior to Construction

**CAUTION!**  
 4" Gas Line  
 Crossing

Remove and Replace Existing  
 Concrete Sidewalk as Necessary  
 for Construction. Cost to be  
 Included in "Site Clearing" and  
 "Site Restoration."

W.L. Sta. 0+00 to Sta. 1+20.00  
 Install 120.00 L.F. RUPVC 8" Pipe  
 by Directional Drilling. Bid Item  
 "Directional Drilling" to include  
 Drilling and Pipe.

W.L. Sta. 1+20.00, Line 1 - PVI  
 BL Sta. 0+70.65, 22.00' Rt.  
 1 - 45° Bend (V)

W.L. Sta. 1+24.20, Line 1 - PVI  
 BL Sta. 0+74.85, 22.00' Rt.  
 1 - 45° Bend (V)

W.L. Sta. 2+70.69 Line 1 =  
 BL Sta. 2+21.34, 22' Rt.  
 1-Fire Hydrant Assembly  
 (L=5')  
 Bury Line Elev. = 1343.00  
 Valve Box Elev. = 1343.10

W.L. Sta. 0+00 to Sta. 0+85.00  
 Install 85.00 L.F. RUPVC 8" Pipe  
 by Directional Drilling. Bid Item  
 "Directional Drilling" to include  
 Drilling and Pipe.

W.L. Sta. 0+85.00 Line 2  
 = BL Sta. -0+10.57, 7' Rt.  
 1 - 11.25° Bend (V)

W.L. Sta. 0+95.00 Line 2  
 = BL Sta. -0+0.57, 7' Rt.  
 1 - 11.25° Bend (V)  
 1-Fire Hydrant Assembly  
 (L=5')  
 Bury Line Elev. = 1343.60  
 Valve Box Elev. = 1343.70

W.L. Sta. 2+60.95 Line 2 =  
 BL Sta. 1+65.40, 7' Rt.  
 1 - 8" CIMJ 90° Bend

W.L. Sta. 3+87.95 End Line 2  
 = BL Sta. 2+30.95, 52' Lt.  
 1 - 2" Blowoff Assembly  
 Valve Box Elev. = 1344.20

**NOTE**  
 Contractor to Verify  
 Location and Depth of  
 Existing 16" Water Line  
 Prior to Construction

**NOTE:**  
 Protective Fill to be  
 Placed and Compacted  
 per City Specs Prior to  
 Water Line Installation.

W.L. Sta. 3+86.15 Line 1  
 = BL Sta. 3+36.78, 22' Rt.  
 1 - 8" CIMJ 45° Bend

W.L. Sta. 4+45.77 End Line 1  
 = BL Sta. 3+61.96, 27.19' Lt.  
 1 - 2" Blowoff Assembly  
 Valve Box Elev. = 1341.30

W.L. Sta. 4+21.77, Line 1 =  
 BL Sta. 3+61.96, 3.19' Lt.  
 1 - 8" CIMJ 45° Bend

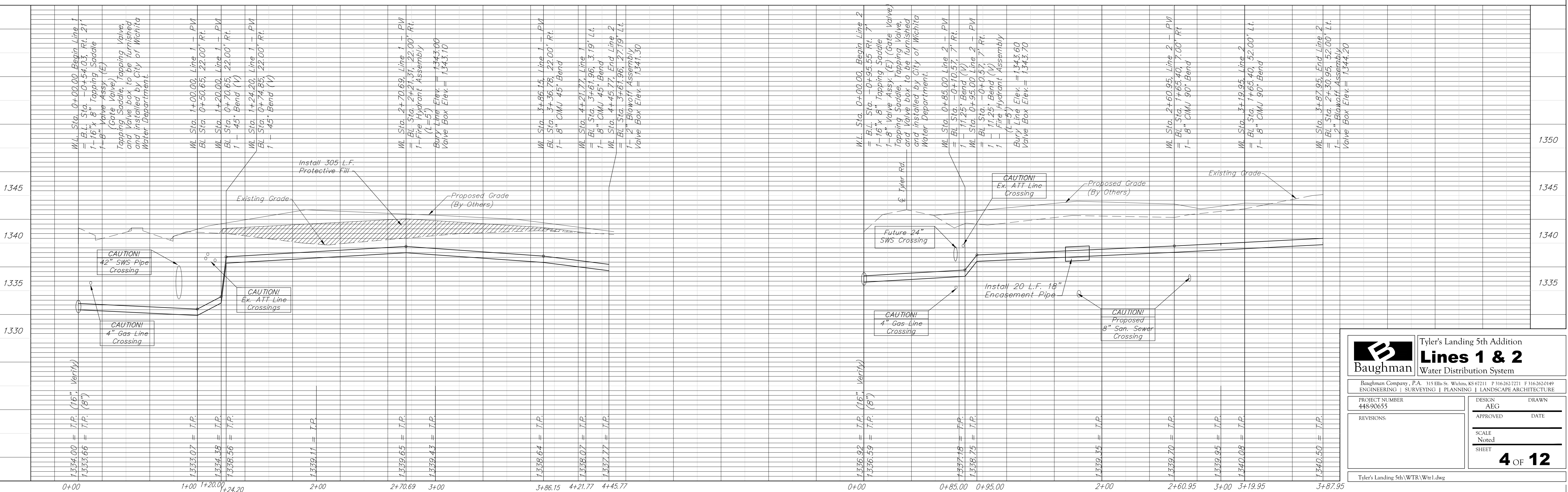
W.L. Sta. 0+00.00, Begin Line 2  
 = B.L. Sta. -0+95.55 Rt. 7'  
 1-16" x 8" Tapping Saddle  
 1-8" Valve Assy. (E) (Gate Valve)  
 Tapping Saddle, Tapping Valve,  
 and Valve box to be furnished  
 and installed by City of Wichita  
 Water Department.

BL = South PL Tyler Ct.  
 Block A

BL Sta. 0+00 Line 2 =  
 NW Corner of Lot 7,  
 Block A

W.L. Sta. 3+19.95 Line 2 =  
 BL Sta. 1+65.40, 52' Lt.  
 1 - 8" CIMJ 90° Bend

Scale: 1" = 40' Horizontal  
 1" = 5' Vertical  
 ● = Iron



**Baughman** Tyler's Landing 5th Addition  
**Lines 1 & 2**  
 Water Distribution System

Baughman Company, P.A. 315 Ellis St. Wichita, KS 67211 P 316-262-7271 F 316-262-0149  
 ENGINEERING | SURVEYING | PLANNING | LANDSCAPE ARCHITECTURE

PROJECT NUMBER: 448-90655 DESIGN: AEG DRAWN: AEG  
 APPROVED: DATE: \_\_\_\_\_

REVISIONS: \_\_\_\_\_

SCALE: Noted  
 SHEET: **4 OF 12**

Tyler's Landing 5th (WTR) Wtr1.dwg