

**Benchmarks:**  
 BM #1: "□" Cut with Cross in Curb Return at Southeast Corner of Intersection of 37th St. N. and Tyler, Approximately 47' South and 49.5' East of the Center of the Intersection. Elevation = 1343.53 (NAVD 88)

BM #2: "□" Cut with Cross in South Curb Line of 37th St. N. Approximately 41.5' South and 1,026' East of the Center of the Intersection of 37th St. N. and Tyler. Elevation = 1337.39 (NAVD 88)

W.L. Sta. 0+00.0 Begin Line 3 = B.L. Sta. -0+94.95, 7' Lt. 1-16"x 8" Tapping Saddle 1-8" Valve Assy. (E) (Gate Valve)  
 Tapping Saddle, Tapping Valve, and Valve box to be furnished and installed by City of Wichita Water Department.

W.L. Sta. 0+95.00, Line 3, = B.L. Sta. 0+00, 7' Lt. 1 - 22.5' Bend (V) 1 - Fire Hydrant Assy. (L = 5)  
 Bury Line Elev. = 1344.20 Valve Box Elev. = 1344.30

5.00 L.F. 8" DICL Pipe  
 W.L. Sta. 0+90.00, Line 3, = B.L. Sta. -0+05.00, 7' Lt. 1 - 22.5' Bend (V)

165.95 L.F. 8" Pipe

W.L. Sta. 1+68.95 to Sta. 1+88.95, Install 20 L.F. 18" Encasement Pipe

W.L. Sta. 2+60.95 Line 3 = B.L. Sta. 1+65.96, 7' Lt. 1- 8" CIMJ 90° Bend

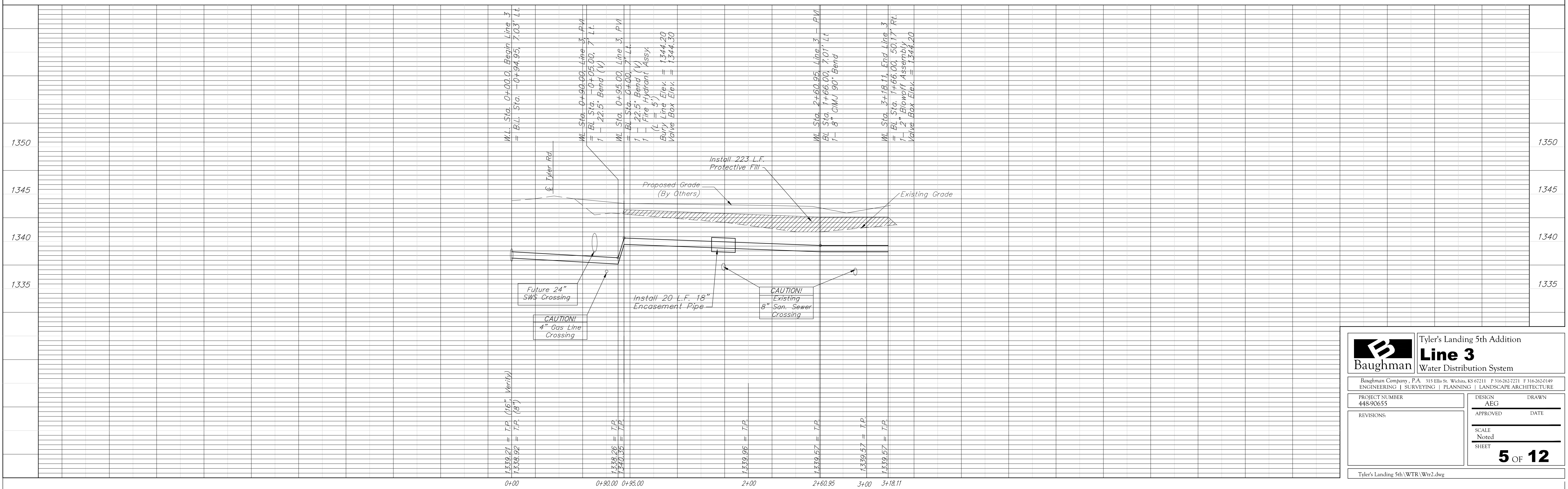
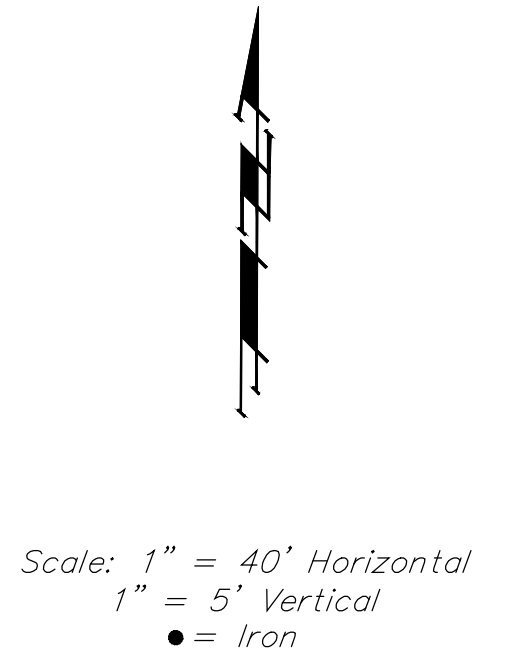
57.16 L.F. 8" Pipe

NOTE  
 Contractor to Verify Location and Depth of Existing 16" Water Line Prior to Construction

NOTE:  
 Protective Fill to be Placed and Compacted per City Specs Prior to Water Line Installation.

BL = North PL Tyler Ct.

Remove Existing 15" CMP. Do Not Replace. Grade Area to Drain per Grades Shown. Cost to be included in Bid Item "Site Clearing" and "Site Restoration."



<b>Baughman</b>		Tyler's Landing 5th Addition <b>Line 3</b> Water Distribution System	
Baughman Company, P.A. 315 Ellis St. Wichita, KS 67211 P 316-262-2271 F 316-262-0149 ENGINEERING   SURVEYING   PLANNING   LANDSCAPE ARCHITECTURE			
PROJECT NUMBER 448-90655	DESIGN AEG	DRAWN	
REVISIONS:	APPROVED	DATE	
	SCALE Noted		
	<b>5 OF 12</b>		
Tyler's Landing 5th/WTR/Wtr2.dwg			