

**General Notes**

1. Contractor will be required to provide notice to utility companies a minimum of forty-eight (48) hours prior to any excavation, as follows:

Kansas One-Call 687-2470

The Contractor must notify the following in case of an emergency:

Cox Communications 262-4270  
 Kansas Gas Service 1-888-482-4950  
 Westar Energy 383-8650  
 Aquila Energy 1-800-303-0357  
 SBC 268-2245  
 City of Wichita Water Dept. 268-4563  
 City of Wichita Sewer Maint. 268-4024  
 City of Wichita Storm Sewer Maint. 268-4090  
 City of Wichita Traffic Maint. 268-4034

2. Utility service lines, poles, valve boxes, meters, and etcetera are to be adjusted as necessary by others prior to construction unless the plans specifically call for their adjustment by the Contractor or unless the plans specifically identify a utility to be adjusted by its owner during construction. Existing utilities and their location, as shown on the plans, represent the best information obtainable for design. The Contractor will be required to work around existing utilities within the right-of-way which do not conflict with proposed construction.

3. Rubble from the removal of miscellaneous structures and excess excavation which is to be wasted shall be disposed of on sites to be provided by the Contractor. These sites shall be approved by the Engineer as to suitability, appearance and site location. Locations, in the opinion of the Engineer, that will leave an unsightly appearance will not be approved. All disposal sites must be approved by the Kansas Department of Health and Environment. Material either stockpiled or disposed of in a flood plain would require a Kansas State Board of Agriculture permit. Any material dumped in waters of the United States or wetlands is subject to U.S. Corps. of Engineers permitting regulations. Any material buried or stockpiled beyond approved construction limits would require additional archaeological investigations unless buried in a previously approved borrow location.

4. Trees and shrubs in public right-of-way which are in direct conflict with proposed new construction shall be removed by the Contractor with the Engineer's approval. Trees and shrubs which are not in direct conflict with proposed new construction shall be saved and protected from damage.

5. The Contractor shall give all property owners and/or tenants of developed property abutting the construction of this project a minimum of ten (10) days notice prior to start of construction.

6. The Contractor shall be responsible for preserving property irons. The Contractor will be required to re-establish any property irons which are damaged or destroyed by his construction operations. Such irons shall be re-established by a licensed land surveyor in accordance with state laws.

7. All existing and proposed erosion control measures including silt fencing, erosion control mat, straw bales, inlet barriers, and const. entrance shall be maintained throughout construction by the contractor and until project is accepted by the City of Wichita. The on-site engineer shall complete weekly reports on the status of erosion control measures. The contractor shall be required to comply with maintenance and/or replacement of erosion control measures as determined by the on-site engineer until project is accepted by City of Wichita. Maintenance and/or replacement of erosion control measures to be paid by L.S. bid item "Maintain Existing BMP's."

9. The Contractor shall be responsible for maintaining continuous flow of sewage through construction. Contractor's proposed method for maintaining sewage flow shall be approved by the Engineer. Cost of maintaining flow of sewage through construction will not be paid for directly and this cost shall be considered as subsidiary to the other pay items of work.

10. Contractor shall grade around exposed manholes at a 1:1 slope. Manholes set lower than existing grade shall have a 9" berm constructed around manhole to prevent infiltration into sanitary sewer system. Cost of dirt, labor, equipment, etc. to be incidental to cost of manhole. Easements shall be graded with the street improvement project.

11. All excess excavation shall remain on-site and shall be stockpiled or spread at a location determined by the engineer.

12. The developer for this project is Jay Russell, 722-2417.

13. Prior to construction in developed lots, contractor shall contact property owners at least 7 days in advance of construction. All sod, fences and sprinkler systems shall be restored to original condition with cost included in bid item "Site Restoration."

14. All areas disturbed during construction shall be seeded as follows (Temporary Seeding):

Seed: Ryegrass 5 lbs/1000 sq. ft.

All costs associated with seeding shall be included in bid item "Seeding." All seeding operations shall conform to City of Wichita Standard Specifications.

Lat. 35, Main 19, S.W.I.  
**SANITARY SEWER IMPROVEMENTS**  
 to serve

**TYLER'S LANDING 5TH ADDITION**

CITY OF WICHITA, KANSAS

Gary Janzen, P.E. City Engineer

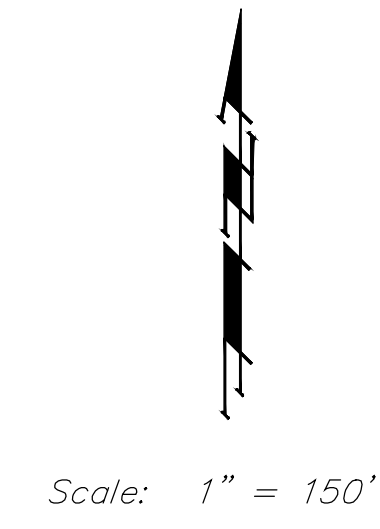
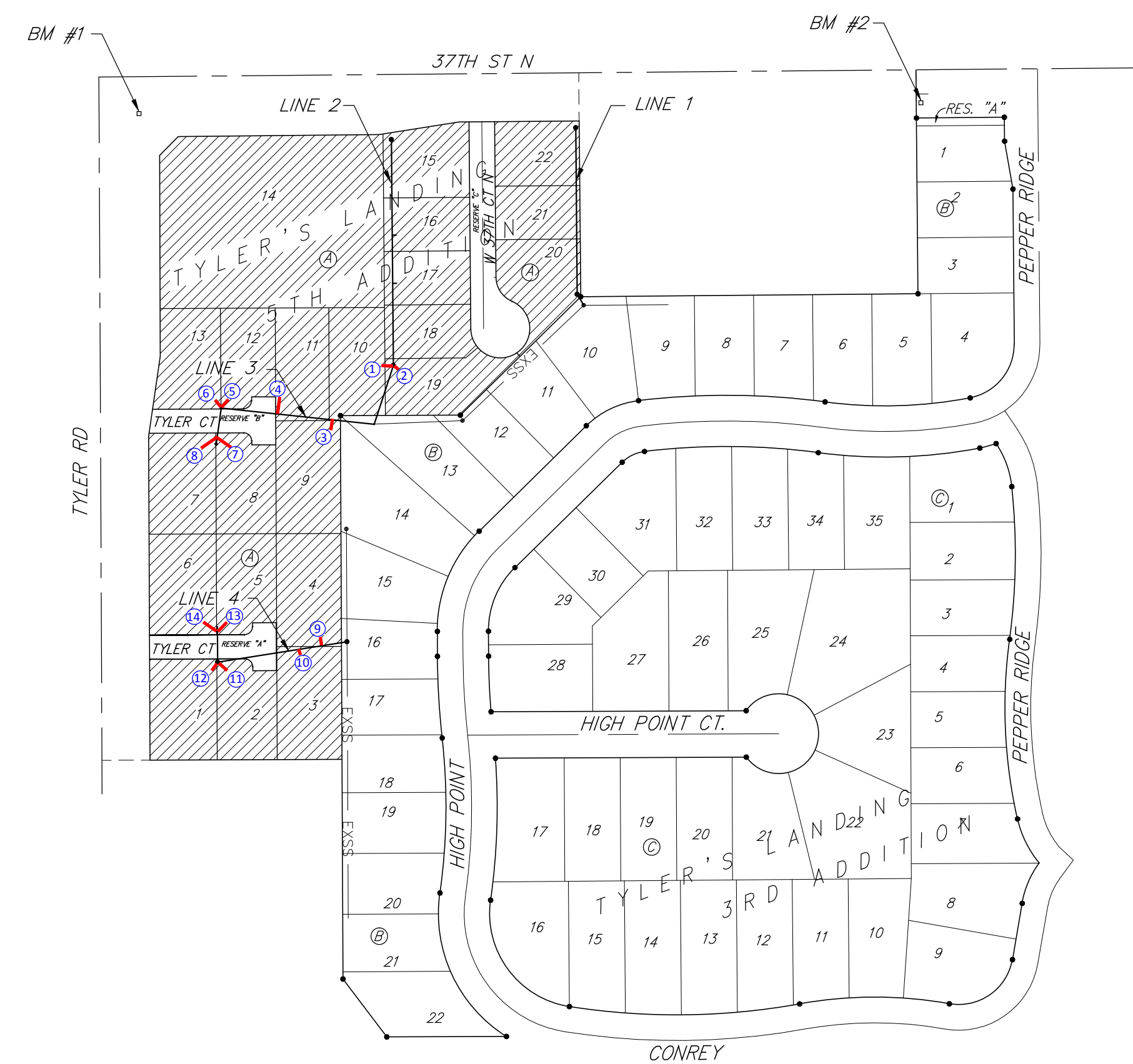
Project Number

468-85006

O.C.A. Number

744384

McCullough Excavation - Contractor  
 G. Baalman - City of Wichita, Field Project Engineer  
 T. Dvorak - City of Wichita, Inspector  
 As-built  
 Stubs & Risers  
 Release Date: 4/5/2015  
 pdf: 6/9/2015



Benefit District

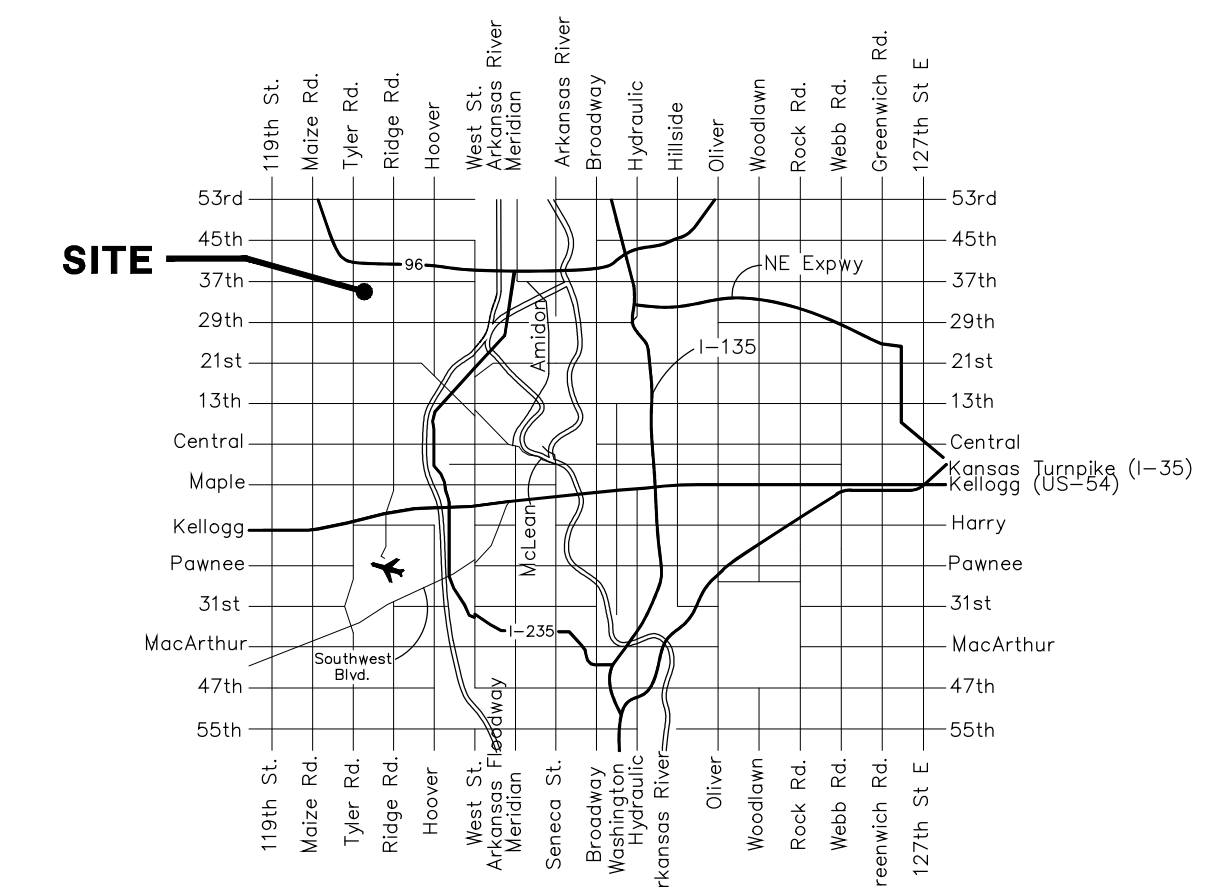
**Benchmarks**

BM #1: "□" Cut with Cross in Curb Return at Southeast Corner of Intersection of 37th St. N. and Tyler, Approximately 47' South and 49.5' East of the Center of the Intersection. Elevation = 1343.53 (NAVD 88)

BM #2: "□" Cut with Cross in South Curb Line of 37th St. N. Approximately 41.5' South and 1,026' East of the Center of the Intersection of 37th St. N. and Tyler. Elevation = 1337.39 (NAVD 88)

**Sheet Index**

Cover Sheet	1
Line 1 & 2	2
Lines 3 & 4	3
Standard Manhole Detail	4
Manhole Frame & Cover Detail	5
Cleanout Assembly Detail	6
Riser Detail	7
Erosion Control Plan	8
Erosion Control Details	9-12
Coordinate Sheet	13
Copy of Plat	14



**Vicinity Map**



Baughman Company, P.A. 315 Ellis St. Wichita, KS 67211 P 316-262-7271 F 316-262-0149  
 ENGINEERING | SURVEYING | PLANNING | LANDSCAPE ARCHITECTURE