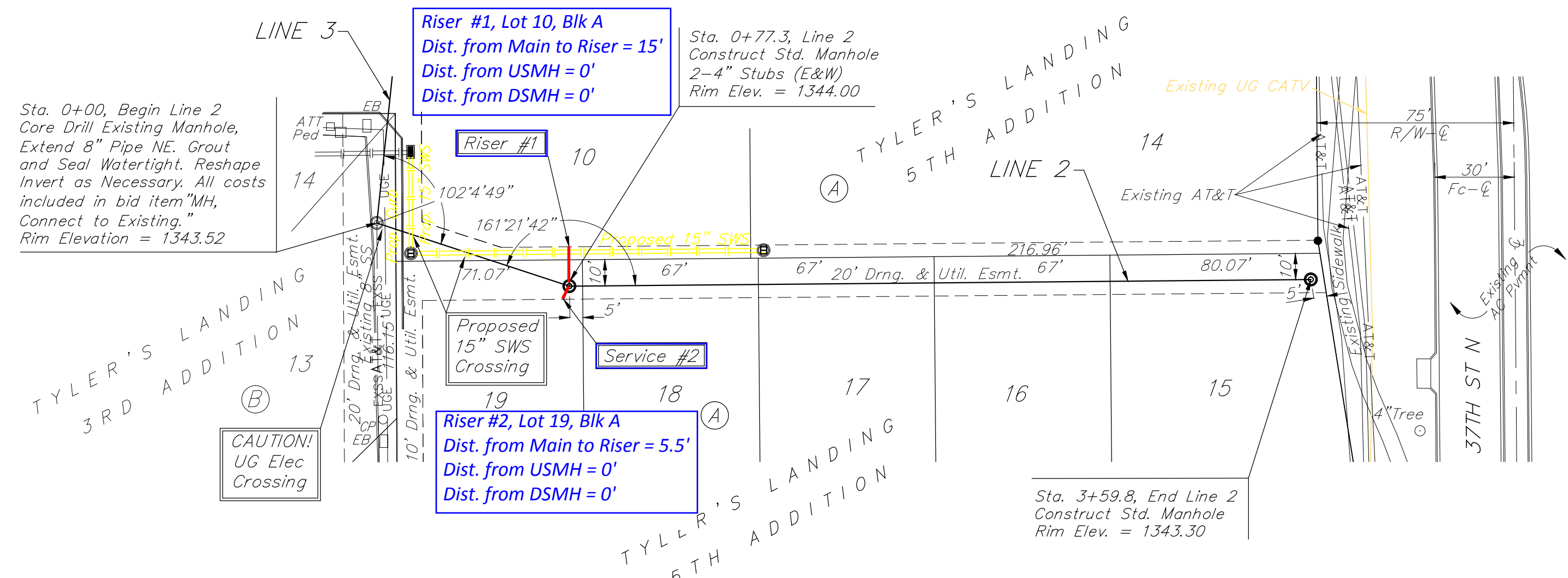
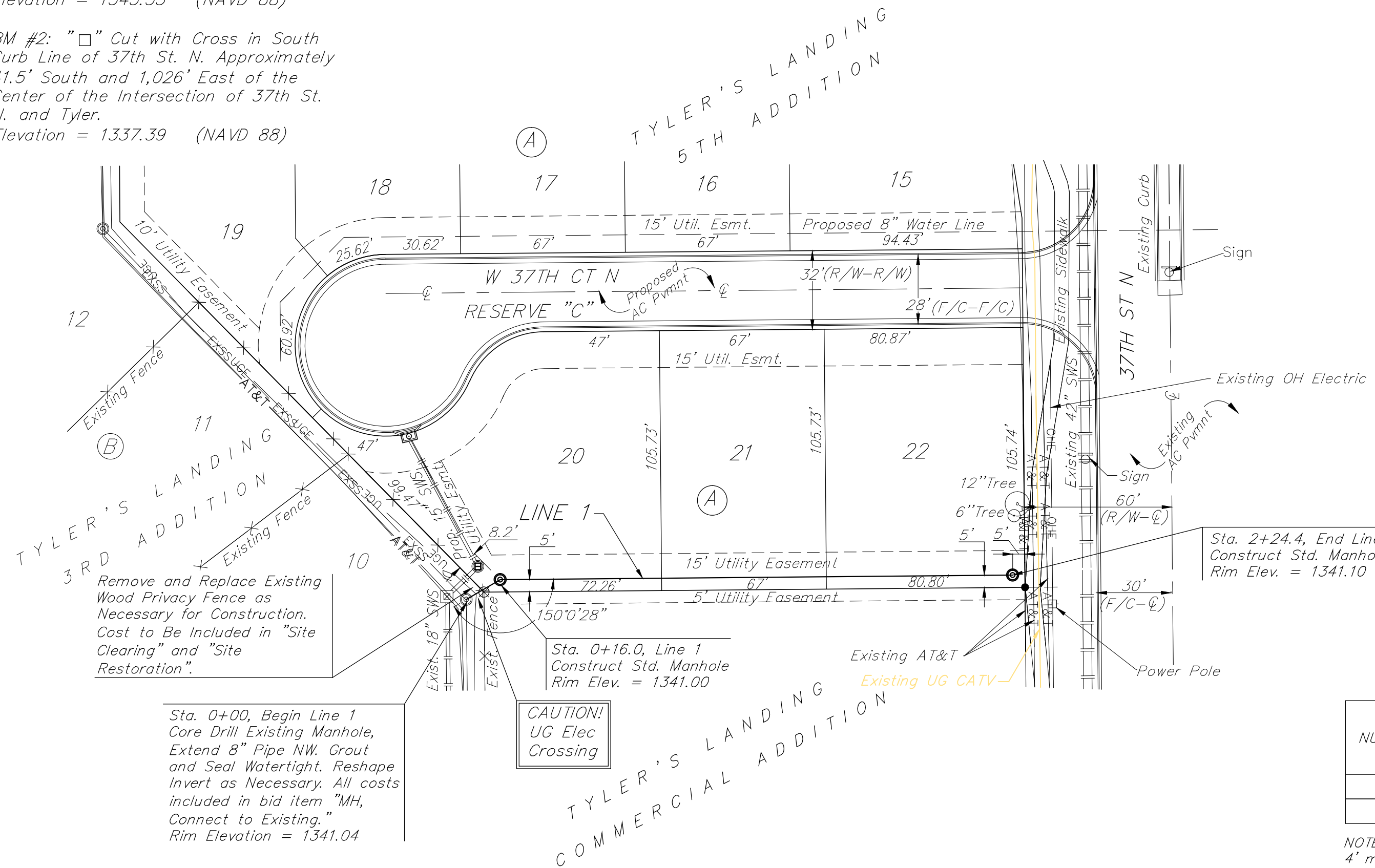


Benchmarks:
 BM #1: "□" Cut with Cross in Curb
 Return at Southeast Corner of
 Intersection of 37th St. N. and Tyler,
 Approximately 47' South and 49.5' East
 of the Center of the Intersection.
 Elevation = 1343.53 (NAVD 88)

BM #2: "□" Cut with Cross in South
 Curb Line of 37th St. N. Approximately
 41.5' South and 1,026' East of the
 Center of the Intersection of 37th St.
 N. and Tyler.
 Elevation = 1337.39 (NAVD 88)

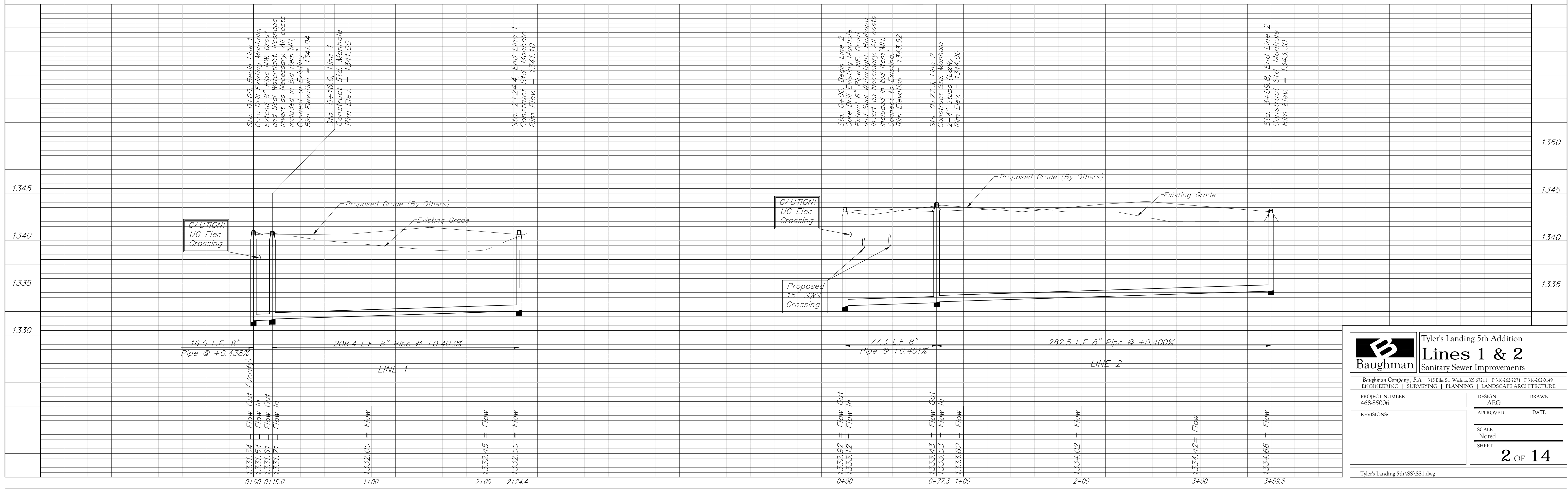
Scale: 1" = 40' Horizontal
 1" = 5' Vertical
 ● = Iron



SEWER SERVICE TABLE

NUMBER	TYPE	LOCATION				FOR INFORMATION ONLY	
		LOT NO.	BLOCK NO.	LINE NO.	STATION \ DIRECTION	APPROXIMATE LENGTH 4" PIPE	
1	4" Stub w/ Riser	10	A	2	0+77.3/Lt.	7'	15'
2	4" Stub	19	A	2	0+77.3/Rt.	-	5.5'

NOTE: Vertical Riser Pipe shall be extended to 2' minimum above ground water elevation and 4' maximum below proposed ground elevation.



Baughman Tyler's Landing 5th Addition
Lines 1 & 2
 Sanitary Sewer Improvements

Baughman Company, P.A. 315 Ellis St. Wichita, KS 67211 P 316-262-7271 F 316-262-0149
 ENGINEERING | SURVEYING | PLANNING | LANDSCAPE ARCHITECTURE

PROJECT NUMBER: 468-85006 DESIGN: AEG DRAWN: AEG
 REVISIONS: APPROVED: DATE: SCALE: Noted SHEET: 2 OF 14

Tyler's Landing 5th/SS/SSI.dwg