

Benchmarks:
 BM #1: "□" Cut with Cross in Curb Return at Southeast Corner of Intersection of 37th St. N. and Tyler, Approximately 47' South and 49.5' East of the Center of the Intersection. Elevation = 1343.53 (NAVD 88)
 BM #2: "□" Cut with Cross in South Curb Line of 37th St. N. Approximately 41.5' South and 1,026' East of the Center of the Intersection of 37th St. N. and Tyler. Elevation = 1337.39 (NAVD 88)

Riser #3, Lot 9, Blk A
 Dist. from Main to Riser = 14.5'
 Dist. from USMH = 141'
 Dist. from DSMH = 51'

Riser #7, Lot 8, Blk A
 Dist. from Main to Riser = 14'
 Dist. from USMH = 0'
 Dist. from DSMH = 0'

Riser #8, Lot 7, Blk A
 Dist. from Main to Riser = 19'
 Dist. from USMH = 0'
 Dist. from DSMH = 0'

Riser #11, Lot 2, Blk A
 Dist. from Main to Riser = 15'
 Dist. from USMH = 0'
 Dist. from DSMH = 0'

Riser #12, Lot 1, Blk A
 Dist. from Main to Riser = 12'
 Dist. from USMH = 0'
 Dist. from DSMH = 0'

Riser #3, Lot 9, Blk A
 Dist. from Main to Riser = 14.5'
 Dist. from USMH = 141'
 Dist. from DSMH = 51'

Riser #4, Lot 11, Blk A
 Dist. from Main to Riser = 18'
 Dist. from USMH = 71'
 Dist. from DSMH = 121'

Riser #5, Lot 12, Blk A
 Dist. from Main to Riser = 13'
 Dist. from USMH = 0'
 Dist. from DSMH = 0'

Riser #6, Lot 13, Blk A
 Dist. from Main to Riser = 13'
 Dist. from USMH = 0'
 Dist. from DSMH = 0'

Riser #10, Lot 3, Blk A
 Dist. from Main to Riser = 8'
 Dist. from USMH = 55'
 Dist. from DSMH = 110'

Riser #9, Lot 4, Blk A
 Dist. from Main to Riser = 12'
 Dist. from USMH = 16'
 Dist. from DSMH = 149'

Riser #13, Lot 5, Blk A
 Dist. from Main to Riser = 16'
 Dist. from USMH = 0'
 Dist. from DSMH = 0'

Riser #14, Lot 6, Blk A
 Dist. from Main to Riser = 20.5'
 Dist. from USMH = 0'
 Dist. from DSMH = 0'

All trench and manhole excavation areas from Sta. 0+38.4 to Sta. 1+21.9, Line 3, Sta. 1+61.9 to Sta. 1+92.3, Line 3, Sta. 0+15.0 to Sta. 0+87.9, Line 4, and Sta. 1+44.0 to Sta. 1+65.4, Line 4 shall be backfilled with sand. The sand backfill shall be within two feet of existing grade and shall be water jetted and vibrated during backfilling. All costs shall be paid for as L.F. "Fill, Sand (Flushed and Vibrated)."

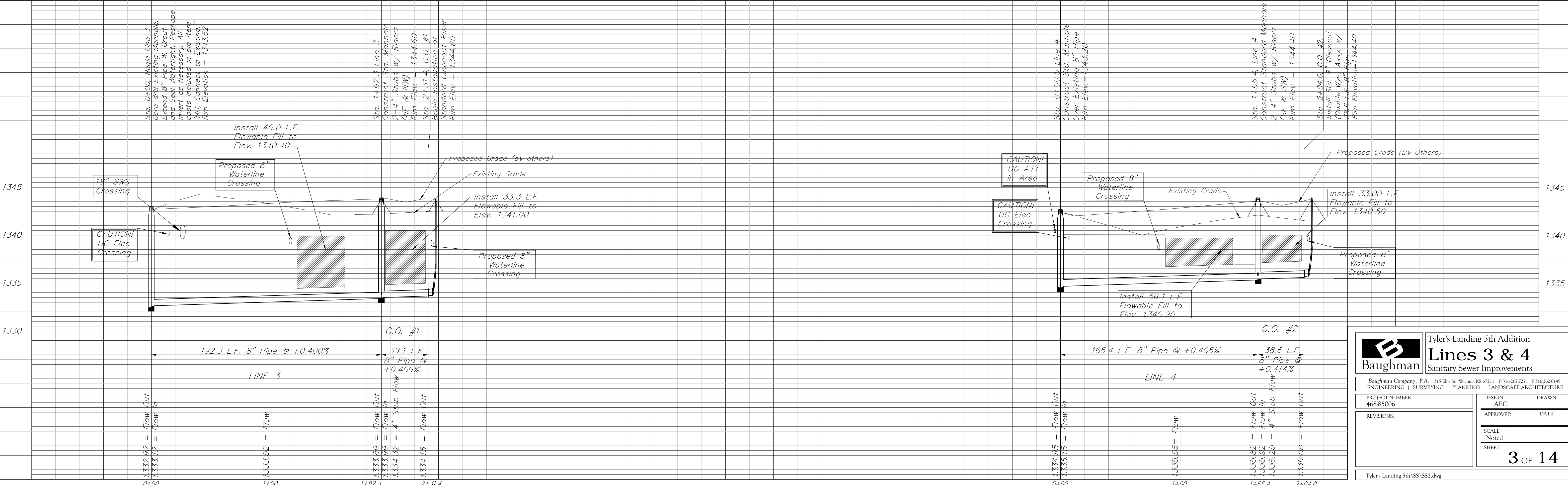
Note:
 8" Cleanout Assembly shall be bid per each. 8" Pipe from Manhole to Cleanout Riser shall be bid as L.F. 8" pipe.
 4" Stubs, where a Riser is Shown, Shall be Included in Bid Item "Riser Assembly 4", Manhole Stub."

SEWER SERVICE TABLE

NUMBER	TYPE	LOCATION				FOR INFORMATION ONLY	
		LOT NO.	BLOCK NO.	LINE NO.	STATION \ DIRECTION	VERTICAL	HORIZONTAL
3	8" x 4" Tee	9	A	3	0+51/Lt.	6.5'	14.5'
4	8" x 4" Tee	11	A	3	1+21/Rt.	6.5'	18'
5	4" Stub w/ Riser	12	A	3	1+92.3/Rt.	6.5'	13'
6	4" Stub w/ Riser	13	A	3	1+92.3/Rt.	6.5'	13'
7	4" Riser Assy.	8	A	3	0+32/Rt.	6'	14'
8	4" Riser Assy.	7	A	3	0+61/Rt.	6'	19'
9	8" x 4" Tee	4	A	4	0+16/Rt.	3.5'	12'
10	8" x 4" Tee	3	A	4	0+55/Lt.	3.5'	8'

NUMBER	TYPE	LOCATION				FOR INFORMATION ONLY	
		LOT NO.	BLOCK NO.	LINE NO.	STATION \ DIRECTION	VERTICAL	HORIZONTAL
11	4" Stub w/ Riser	2	A	4	1+65.4/Lt.	4'	15'
12	4" Stub w/ Riser	1	A	4	1+65.4/Lt.	4'	12'
13	4" Riser Assy.	5	A	4	2+04.0/Lt.	4'	16'
14	4" Riser Assy.	6	A	4	2+04.0/Rt.	4'	20.5'

NOTE: Vertical Riser Pipe shall be extended to 2' minimum above ground water elevation and 4' maximum below proposed ground elevation.



Baughman Tyler's Landing 5th Addition
Lines 3 & 4
 Sanitary Sewer Improvements

Baughman Company, P.A. 315 Ellis St. Wichita, KS 67211 P 316-262-7271 F 316-262-0149
 ENGINEERING | SURVEYING | PLANNING | LANDSCAPE ARCHITECTURE

PROJECT NUMBER: 468-85006 DESIGN: AEG DRAWN: AEG
 APPROVED: DATE: _____

REVISIONS: _____ SCALE: Noted
 SHEET: **3 OF 14**

Tyler's Landing 5th/SSVSS2.dwg