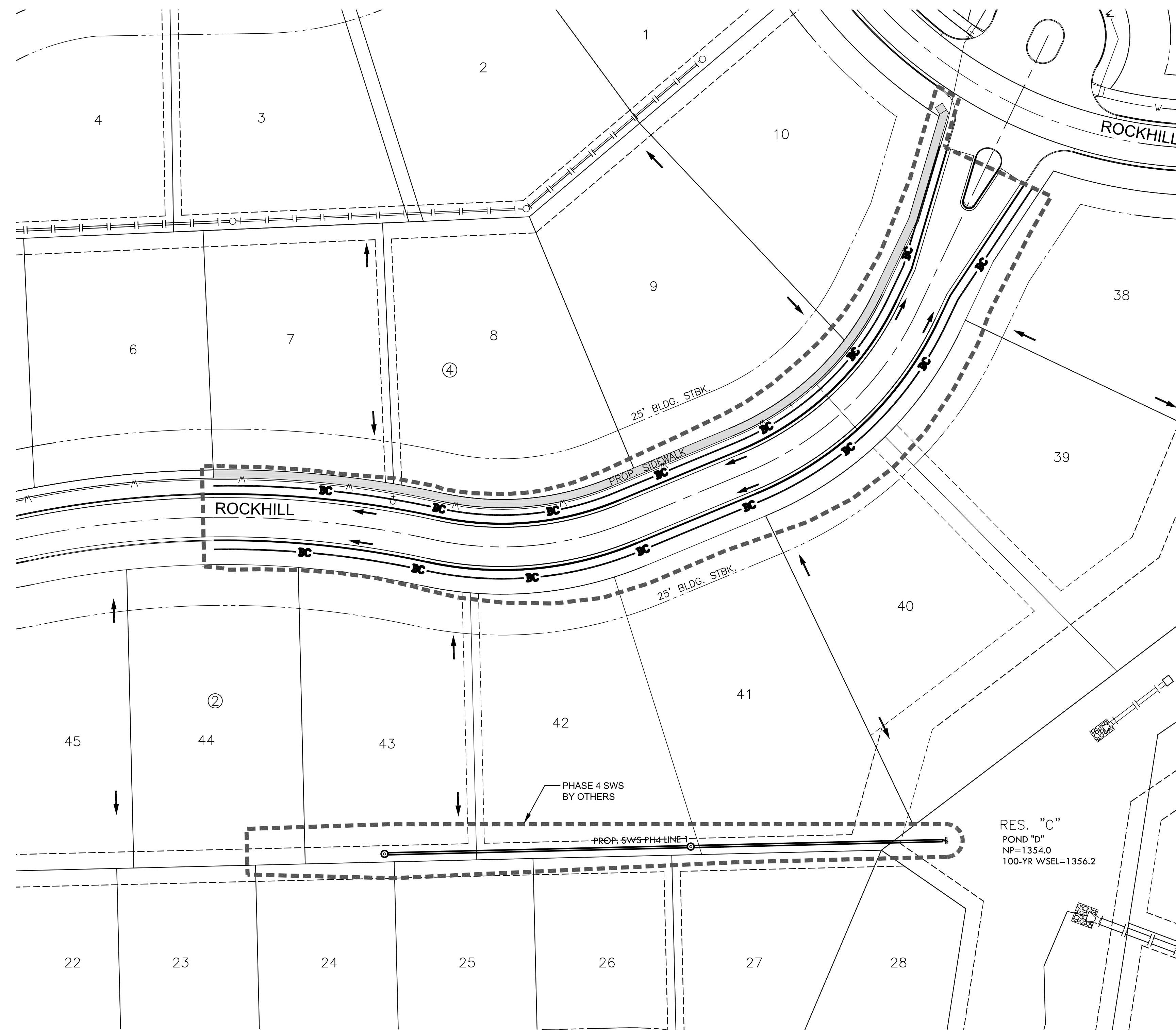


PLOTTED: Thursday, January 15, 2015 @ 04:13PM

PAVING & INCIDENTAL DRAINAGE FOR
KRUG SOUTH ADDITION
PHASE 4



EROSION CONTROL NOTES

1. EROSION CONTROL IS TO MEET ALL FEDERAL, STATE, COUNTY & LOCAL CODE STANDARDS.
2. CONTRACTOR SHALL PROVIDE AND PRESERVE EROSION PROTECTION THROUGHOUT PROJECT CONSTRUCTION. THE PLAN PROVIDED HERE IS FOR FINAL PROTECTION. VARIOUS PHASES OF THIS PLAN SHALL BE IMPLEMENTED OR MODIFIED TO CONTROL EROSION. MODIFICATIONS OF THE PLAN SHALL BE APPROVED BY THE OWNERS REPRESENTATIVE.
3. CONTRACTOR IS RESPONSIBLE FOR MAINTAINING AND IMPLEMENTING ALL EROSION CONTROL.
4. CONTRACTOR SHALL INSTALL AND MAINTAIN A STABILIZED CONSTRUCTION ENTRANCE AT A LOCATION DETERMINED BY THE ENGINEER.
5. FOLLOW THE LINK BELOW FOR DETAILS ON SPECIFIC CITY OF WICHITA STANDARD DETAILS:
<http://www.wichita.gov/Government/Departments/PWI/StandardsConstruction>

EROSION CONTROL LEGEND

- SEEDING LIMITS
ANNUAL RYE 200 LBS/ACRE (0.4 AC)
FERTILIZE 10-20-10 @ 150 LBS/ACRE
(QUANTITIES GIVEN FOR INFORMATION ONLY)
- BC — BACK OF CURB PROTECTION (1,166 L.F.)
- w- EXISTING WATER LINE
- EXISTING STORM WATER SEWER LINE
- 1360 PROPOSED CONTOURS
- DRAINAGE ARROW



©2013
MKEC Engineering
All Rights Reserved
www.mkec.com
These drawings and their contents, including, but not limited to, all concepts, designs, & ideas are the exclusive property of MKEC Engineering (MKEC), and may not be used or reproduced in any way without the express consent of MKEC.

EROSION CONTROL PLAN

PROJECT NO.	472-85057	
DATE	JAN. 2015	
SCALE	AS SHOWN	
DESIGNED	DRAWN	CHECKED
JTC	LES	JTC

NO.	REVISION	DATE

SHEET NO.
08 OF 13

J:\CIVIL\529\DWG\CIVIL\CD\PAVPHASE 4\02501.PDF.DWG