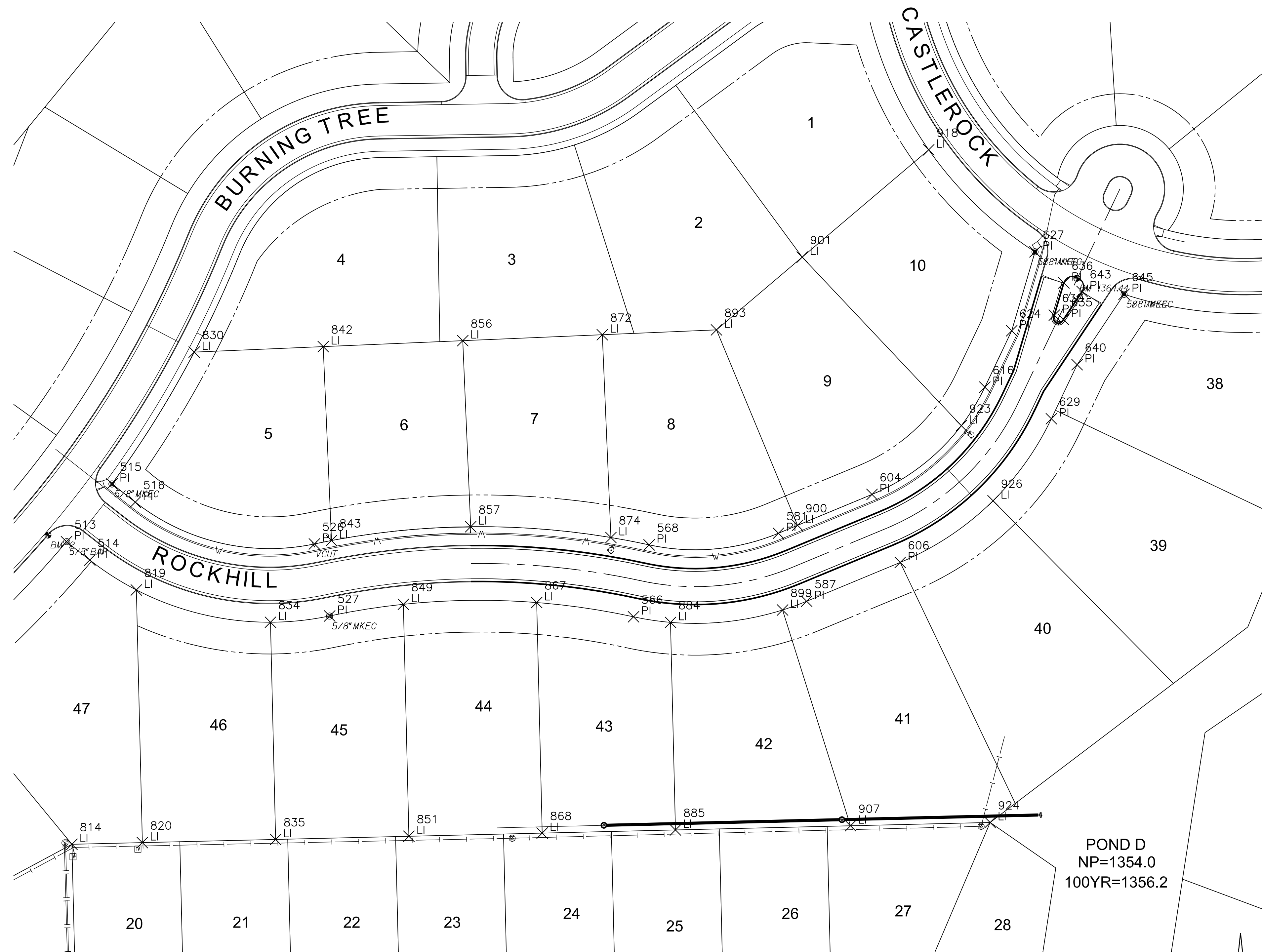


PLOTED: Thursday, January 15, 2015 @ 04:14PM

PLAT POINTS			
Point #	Northing	Easting	Desc.
513	1697966.01	1694884.54	PI
514	1697951.61	1694902.85	PI
515	1698011.60	1694920.40	PI
516	1697997.20	1694938.71	PI
526	1697964.30	1695079.80	PI
527	1697907.55	1695091.80	PI
566	1697906.89	1695331.13	PI
568	1697963.56	1695343.44	PI
581	1697972.72	1695445.27	PI
587	1697919.15	1695467.50	PI
604	1698003.30	1695518.97	PI
606	1697949.72	1695541.19	PI
616	1698087.82	1695607.87	PI
624	1698132.24	1695629.00	PI
627	1698194.44	1695647.36	PI
629	1698062.91	1695660.26	PI
630	1698144.54	1695662.58	PI
635	1698141.18	1695669.74	PI
636	1698169.96	1695670.08	PI
640	1698105.53	1695680.52	PI
643	1698163.19	1695684.42	PI
645	1698161.00	1695717.52	PI
819	1697928.03	1694939.55	LI
830	1698115.43	1694985.16	LI
834	1697902.60	1695045.18	LI
842	1698119.76	1695086.74	LI
843	1697966.99	1695093.24	LI
849	1697916.74	1695149.88	LI
856	1698124.43	1695196.64	LI
857	1697977.86	1695202.88	LI
867	1697918.13	1695254.88	LI
872	1698129.11	1695306.54	LI
874	1697969.34	1695313.34	LI
884	1697902.50	1695360.28	LI
893	1698132.94	1695396.46	LI
899	1697912.24	1695448.52	LI
900	1697978.97	1695460.34	LI
901	1698190.25	1695464.00	LI
918	1698274.80	1695563.64	LI
923	1698057.46	1695589.34	LI
926	1697998.28	1695614.33	LI

PLAT POINTS			
Point #	Northing	Easting	Desc.
814	1697727.68	1694888.82	LI
820	1697729.00	1694944.28	LI
835	1697731.50	1695049.25	LI
851	1697733.99	1695154.22	LI
868	1697736.48	1695259.19	LI
885	1697738.98	1695364.16	LI
907	1697742.25	1695502.04	LI
924	1697744.86	1695612.01	LI

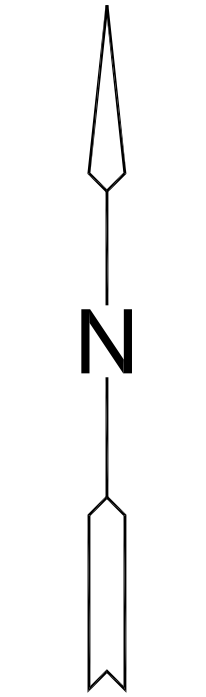


DATUM:
 1 - THE PROJECT HORIZONTAL DATUM IS BASED ON THE NAD83-1993, KANSAS STATE PLANE COORDINATE SYSTEM, SOUTH ZONE, (US SURVEY FEET DEFINITION), WITH A COMBINED ADJUSTMENT FACTOR (CAF) OF 1.0001200144. ALL COORDINATES AND DIMENSIONS SHOWN ON THESE PLANS ARE MODIFIED TO GROUND VALUES.
 2 - THE VERTICAL DATUM USED IS NGVD29.

BENCHMARKS:
 BM 1 CHISELED SQUARE ON TOP OF CURB AT NOSE OF ISLAND ON SOUTH SIDE OF ROCKHILL STREET AT CASTLE ROCK STREET. ELEV. = 1364.47 NGVD 29
 BM2 BRASS DISC IN TOP OF CURB AT SOUTH END OF SOUTHEAST CURB RETURN AT ROCKHILL AND BURNING TREE. ELEV. = 1353.95 NGVD 29

THE FOLLOWING EQUATIONS CAN BE USED FOR CONVERSION:
 GROUND COORDINATES TO STATE PLANE COORDINATES = GROUND X 1/CAF
 STATE PLANE COORDINATES TO GROUND COORDINATES = STATE PLANE X CAF

DATUM & BENCHMARKS



EVERY ATTEMPT HAS BEEN MADE TO INSURE ALL COORDINATE VALUES SHOWN ARE AN ACCURATE AND TRUE REPRESENTATION OF THE CURRENT PLANS. ALL VALUES ARE TO BE CONFIRMED WITH THE FINAL SIGNED PLAN SET BEFORE USE.



PAVING & INCIDENTAL DRAINAGE FOR
KRUG SOUTH ADDITION
 PHASE 4

©2014 MKEC Engineering All Rights Reserved www.mkec.com
 These drawings and their contents, including, but not limited to, all concepts, designs, & ideas are the exclusive property of MKEC Engineering (MKEC), and may not be used or reproduced in any way without the express consent of MKEC.

BUBBLE MAP

PROJECT NO.	472-85057	
DATE	JAN. 2015	
SCALE	AS SHOWN	
DESIGNED	DRAWN	CHECKED
JTC	LES	JTC
NO.	REVISION	DATE