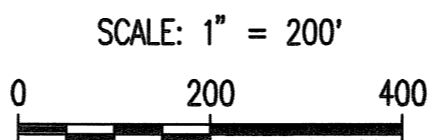


Sheet 04-22-2014 1:39:52 PM by JHM
 Plot Scale 1:1 04-22-2014 2:33:49 PM by JOSEPH NESTELROAD
 C:\2013\13332\002\PHASE 2\PPS\2202 PPS Key Map and General Notes



GENERAL NOTES

- ALL CONSTRUCTION AND MATERIALS TO COMPLY WITH CITY OF WICHITA SPECIFICATIONS AND STANDARDS.
- ALL ELEVATIONS SHOWN ARE NAVD 88.
- CONTRACTOR WILL BE REQUIRED TO PROVIDE A MINIMUM ADVANCE NOTICE OF SEVENTY-TWO (72) HOURS TO UTILITY COMPANIES PRIOR TO STARTING ANY EXCAVATION AS FOLLOWS:
 KANSAS ONE-CALL 687-2470 or 811
 THE CONTRACTOR MUST NOTIFY THE FOLLOWING IN CASE OF AN EMERGENCY:
 EMERGENCY DISPATCH 911
 COX COMMUNICATIONS 800-778-9140
 KANSAS GAS SERVICE 888-482-4950
 WESTAR ENERGY 800-383-1183
 BLACK HILLS ENERGY 800-694-8989
 AT&T 800-286-8313
 WICHITA WATER UTILITIES (SS AND WL) 262-6000
- THE CONTRACTOR SHALL LIMIT THE EXTENT OF TRENCH TO REMAIN OPEN OVERNIGHT AND WEEKENDS TO LESS THAN 50 FEET. ANY OPEN TRENCH SHALL BE BARRICADED/PROTECTED WITH ORANGE CONSTRUCTION FENCING.
- AT LEAST 72 HOURS PRIOR TO BEGINNING EXCAVATION (EXCLUDING WEEKENDS AND HOLIDAYS), THE CONTRACTOR SHALL CONTACT THE KANSAS ONE-CALL SYSTEM, A UTILITY LOCATION SERVICE, AT (316) 687-2470 AND CITY OF WICHITA UTILITY LOCATES, WWW.WICHITA.GOV/LOCATE (268-4260) TO REQUEST THE LOCAL UTILITY COMPANIES MARK ANY EXISTING LINES WITHIN THE PROJECT AREA.
- PRIVATE UTILITY LINES NOT LOCATED BY THE UTILITY SERVICE LOCATION. THE CONTRACTOR SHALL COORDINATE WITH THE OWNER FOR LOCATION OF PRIVATE UTILITIES AND TAKE MEASURES TO PROTECT DURING CONSTRUCTION.
- UNDERGROUND UTILITY SERVICE LINES AND OVERHEAD UTILITY POLE LINES ARE TO BE ADJUSTED AS NECESSARY BY OTHERS PRIOR TO CONSTRUCTION UNLESS THE DRAWINGS SPECIFICALLY CALL FOR THEIR ADJUSTMENT BY THE CONTRACTOR OR UNLESS THE DRAWINGS SPECIFICALLY IDENTIFY A UTILITY TO BE ADJUSTED BY ITS OWNER DURING CONSTRUCTION. EXISTING UTILITIES AND THEIR LOCATIONS, AS SHOWN ON THE DRAWINGS, REPRESENT THE BEST INFORMATION OBTAINABLE FOR THE DESIGN. THE CONTRACTOR WILL BE REQUIRED TO WORK AROUND EXISTING UTILITIES WHICH DO NOT CONFLICT WITH PROPOSED CONSTRUCTION.
- THE CONTRACTOR SHALL BE RESPONSIBLE FOR PRESERVING PROPERTY IRONS. THE CONTRACTOR WILL BE REQUIRED TO RE-ESTABLISH ANY PROPERTY IRONS WHICH ARE DAMAGED OR DESTROYED BY HIS CONSTRUCTION OPERATIONS. SUCH IRONS SHALL BE RE-ESTABLISHED BY A LICENSED LAND SURVEYOR IN ACCORDANCE WITH STATE LAWS.
- CONTRACTOR SHALL PROVIDE POSITIVE DRAINAGE AWAY FROM ALL MANHOLE COVERS.
- MANHOLES SHALL BE TYPE "P" MANHOLES. MANHOLES SHALL BE CONSTRUCTED IN ACCORDANCE WITH THE STANDARD SPECIFICATIONS AND THE STANDARD DETAIL DRAWINGS.
- RUBBLE FROM THE REMOVAL OF MISCELLANEOUS STRUCTURES INCLUDING ANY TREES REMOVED, TREE TRIMMINGS, AND EXCESS EXCAVATION WHICH IS TO BE WASTED SHALL BE DISPOSED OF ON SITES PROVIDED BY THE CONTRACTOR. THESE SITES SHALL ALSO BE APPROVED BY THE ENGINEER AS TO SUITABILITY, APPEARANCE, AND SITE LOCATION. LOCATIONS THAT, IN THE OPINION OF THE ENGINEER, WILL LEAVE AN UNSIGHTLY APPEARANCE WILL NOT BE APPROVED. ALL DISPOSAL SITES MUST BE APPROVED BY THE KANSAS DEPARTMENT OF HEALTH AND ENVIRONMENT. MATERIAL EITHER STOCKPILED OR DISPOSED OF IN A FLOOD PLAIN WILL REQUIRE A KANSAS STATE BOARD OF AGRICULTURE PERMIT. ANY MATERIAL DUMPED IN WATERS OF THE UNITED STATES OR WETLANDS IS SUBJECT TO U.S. CORPS OF ENGINEERS PERMITTING REGULATIONS. ANY MATERIAL BURIED OR STOCKPILED BEYOND APPROVED CONSTRUCTION LIMITS MAY REQUIRE ARCHAEOLOGICAL INVESTIGATIONS UNLESS BURIED IN A PREVIOUSLY APPROVED DISPOSAL LOCATION.
- ALL APPROVED EXCESS EXCAVATION WHICH IS TO BE WASTED SHALL BE STOCKPILED WITHIN SPILLED WINE ADDITION AT NO ADDITIONAL COST TO THE OWNER. STOCKPILE LOCATIONS SHALL BE AS DIRECTED BY THE OWNER AND IN ACCORDANCE WITH GENERAL NOTE NO. 11 ABOVE.
- ALL LAWN/TURF AREAS DISTURBED BY CONSTRUCTION OF THE PROPOSED IMPROVEMENTS SHALL BE RESTORED WITH THE SAME GRASS/SOD AS EXISTING. RESTORATION OF DISTURBED AREAS SHALL INCLUDE, BUT NOT BE LIMITED TO, TOP SOIL PREPARATION, SEEDING, MULCH, AND/OR RESEEDING PER LANDSCAPE PLANS (BY OTHERS). ALL SEEDING/SODDING WORK SHALL BE IN ACCORDANCE WITH THE CITY OF WICHITA STANDARD SPECIFICATIONS AND THE CITY OF WICHITA ADMINISTRATIVE REGULATION NO. AR6.5 WHICH GOVERNS CLEANUP AND RESTORATION OR REPLACEMENT FOLLOWING CONSTRUCTION.

- THE CONTRACTOR SHALL SEED ALL AREAS DISTURBED BY CONSTRUCTION ACTIVITIES WITH TEMPORARY RYE GRASS. RYE GRASS SEED SHALL BE PLANTED AT A MINIMUM RATE OF SIX (6) POUNDS PER ONE THOUSAND (1,000) SQUARE FEET. THIS TEMPORARY SEEDING MAY BE OMITTED ONLY IF OTHER SEEDING IS REQUIRED IN ACCORDANCE WITH GENERAL NOTE NO. 11 ABOVE. TEMPORARY SEEDING OR PERMANENT SEEDING/SODDING SHALL BE APPLIED WITHIN 14 DAYS AFTER THE AREA HAS BEEN DISTURBED.
- THE CONTRACTOR SHALL AVOID REMOVAL OR TRIMMING OF ANY TREES OR SHRUBS WHERE POSSIBLE. WHERE THE CONTRACTOR BELIEVES THE REMOVAL OR TRIMMING IS UNAVOIDABLE, HE SHALL COORDINATE SUCH WORK WITH THE ENGINEER.
- THE CONTRACTOR SHALL PREVENT ANY CONSTRUCTION DEBRIS FROM ENTERING THE EXISTING SANITARY SEWER DURING CONSTRUCTION.
- THE CONTRACTOR SHALL GIVE ALL PROPERTY OWNERS AND/OR TENANTS OF DEVELOPED PROPERTY ABUTTING THE CONSTRUCTION OF THIS PROJECT A MINIMUM OF TEN (10) DAYS ADVANCE NOTICE PRIOR TO START OF CONSTRUCTION.
- THE CONTRACTOR IS REQUIRED TO MAINTAIN CONTINUOUS FLOW OF SEWAGE IN EXISTING MAINS AT ALL TIMES.
- THE CONTRACTOR SHALL NOT BURY MANHOLES THAT HAVE RIM ELEVATIONS WHICH ARE LOWER THAN EXISTING GROUND AT THE MANHOLE. THE GROUND AROUND SUCH MANHOLES AND ALONG THE SEWER ALIGNMENT SHALL BE BACKFILLED TO THE APPROXIMATE ELEVATION OF THE PROPOSED GROUND ELEVATION SHOWN ON THE PLAN/PROFILE SHEETS. THE CONTRACTOR SHALL PROVIDE DRAINAGE AWAY FROM THESE MANHOLES AND SEWER LINES BY CONSTRUCTION OF TEMPORARY DITCHES OR SLOPING THE GROUND AS REQUIRED. ALL COSTS FOR THIS WORK SHALL BE CONSIDERED SUBSIDIARY TO THE INSTALLED BID PRICE FOR MANHOLES OR PIPE.
- THE CONTRACTOR SHALL PROVIDE MOUNDED EARTH AT MANHOLES AND CLEANOUTS THAT HAVE TOP ELEVATIONS GREATER THAN 1 FOOT ABOVE EXISTING GRADE, AS SHOWN ON THE DRAWINGS.
- INTERURBAN TRAFFIC GENERATED OUTSIDE THE PROJECT AREA AND LOCAL BUSINESS OR RESIDENTIAL TRAFFIC GENERATED WITHIN THE PROJECT AREA ARE TO BE CARRIED THROUGH CONSTRUCTION AS FURTHER PROMULGATED BY PROJECT SPECIAL PROVISIONS. THE CONTRACTOR SHALL UTILIZE BARRICADES, SIGNS, GUARDS, AND FLAGMEN IN ACCORDANCE WITH THE MANUAL ON UNIFORM TRAFFIC CONTROL DEVICES.
- WHERE INDICATED IN THE DRAWINGS, THE SANITARY SEWER EXCAVATION SHALL BE SAND FILLED AND FLUSHED (JETTED AND VIBRATED) WITH WATER PER THE REQUIREMENTS LISTED IN THE STANDARD SPECIFICATIONS FOR THE CITY OF WICHITA, UNLESS FLOWABLE FILL OR OTHER IMPROVED BACKFILL MATERIAL IS OTHERWISE SPECIFIED.
- THE CONTRACTOR SHALL INSTALL AND/OR MAINTAIN EROSION CONTROL METHODS AS SPECIFIED. THE GENERAL LOCATION OF THE REQUIRED EROSION CONTROL IS ILLUSTRATED ON C203. THE SANITARY SEWER CONTRACTOR SHALL BE RESPONSIBLE FOR MAINTAINING THE EROSION CONTROL SHOWN THROUGH THE COMPLETION OF THIS PROJECT. INSTALLATION OF THESE BMP'S DOES NOT RELIEVE THE CONTRACTOR OF THE RESPONSIBILITY OF ABATING SOIL EROSION.

BENCHMARK LIST

- BM R 39 - HELD FOR PROJECT DATUM BENCHMARK NGS BM "R 39" STANDARD DISK, ON THE NW CORNER OF THE RAILROAD BRIDGE. (NOT SHOWN)
ELEV. = 1361.74 (NAVD 88)
- BM 1 - CHISELED "d" AT THE SE CORNER OF THE E END OF THE CONCRETE DRIVEWAY, E OF WHERE THE DRIVE GOES TO A HOUSE.
ELEV. = 1363.725 (NAVD 88)
- BM 2 - CHISELED "d" ON THE TOP FRONT CENTER OF THE STORM DRAIN CURB INLET ON THE E SIDE OF GREENWICH ROAD AND ON THE N SIDE OF THE RAILS TO TRAILS HIKING PATH FROM THE ABANDONED RAILROAD RIGHT OF WAY BETWEEN 13TH STREET AND 21ST STREET.
ELEV. = 1367.13 (NAVD 88)

LEGEND

- EXISTING SANITARY SEWER
- PROPOSED SANITARY SEWER
- EXISTING SANITARY SEWER w/MANHOLE
- PROPOSED SANITARY SEWER w/MANHOLE



PROJECT INFORMATION
Spilled Wine
 2000 N. Greenwich Rd.
 Wichita, KS 67206

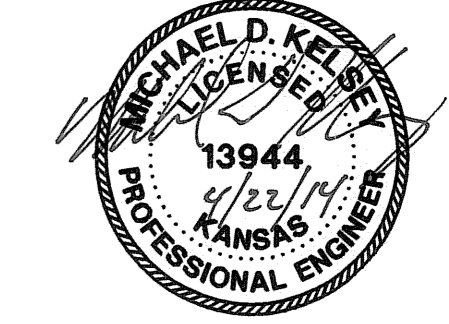
ARCHITECT:
 HUFFT PROJECTS
 321 West 45th Street
 Kansas City, MO 64111
 P: 816-531-6200
 F: 816-531-0201
 www.hufft.com

Hufft Projects, LLC
 Missouri State Certificate of Authority #

ENGINEER:
 P.E.C.
 303 S. Topolia Drive
 Wichita, KS 67202
 P: 316-262-2891
 Contact: Mike Kelso

LANDSCAPE:
 4NORTH
 18475 West 85th Street
 Overland, MO 64088
 P: 913-888-8111
 F: 913-888-8999
 Contact: John Galloway

ACOUSTICS:
 AVANT ACOUSTICS
 18475 West 85th Street
 Overland, MO 64088
 P: 913-888-8111
 F: 913-888-8999
 Contact: Jim Robinson



CONSTRUCTION DOCUMENTS
 MAY 1, 2014

REVISION SCHEDULE		
NO.	DATE	ISSUE

This drawing has been prepared under the architect's supervision. The architect disclaims any responsibility for the existing building structure, existing site conditions, existing construction elements, and any drawings or documents used for this project that are not signed and sealed by the architect. The information herein is of proprietary nature and is submitted in confidence for the use of our clients only. Unauthorized reproduction, distribution, or dissemination, in whole or in part is prohibited. The information contained herein is and remains the property of Hufft Projects, LLC and reuse or possession of this information confers no right in or license to disclose to others the subject matter contained herein for any but authorized purposes. All rights reserved. Copyright © 2013

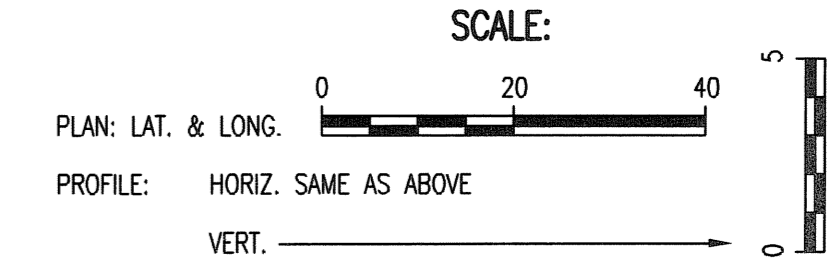
SPILLED WINE RESIDENCE - PHASE 2
SANITARY SEWER IMPROVEMENTS
KEY MAP AND GENERAL NOTES
 GARY JANZEN, P.E. - CITY ENGINEER
 PRIVATE PROJECT NO. 2193 PPS (607861)

PROFESSIONAL ENGINEERING CONSULTANTS P.A.
 303 SOUTH TOPOLIA WICHITA, KS 67202
 316-262-2891 www.pec.com

PEC
 Job No. 35-13332-002-5505
 Date NOVEMBER 2013
 Designed By DK
 Drawn By JAN, CSL
 Sheet C202

Architect: Matthew Hufft
 License Number: ACP
 Drawn By: DKW
 Project Number: Project Number
 PPS KEY MAP AND GENERAL NOTES

C202



PROJECT INFORMATION:
Spilled Wine
 2000 N. Greenwich Rd.
 Wichita, KS 67206

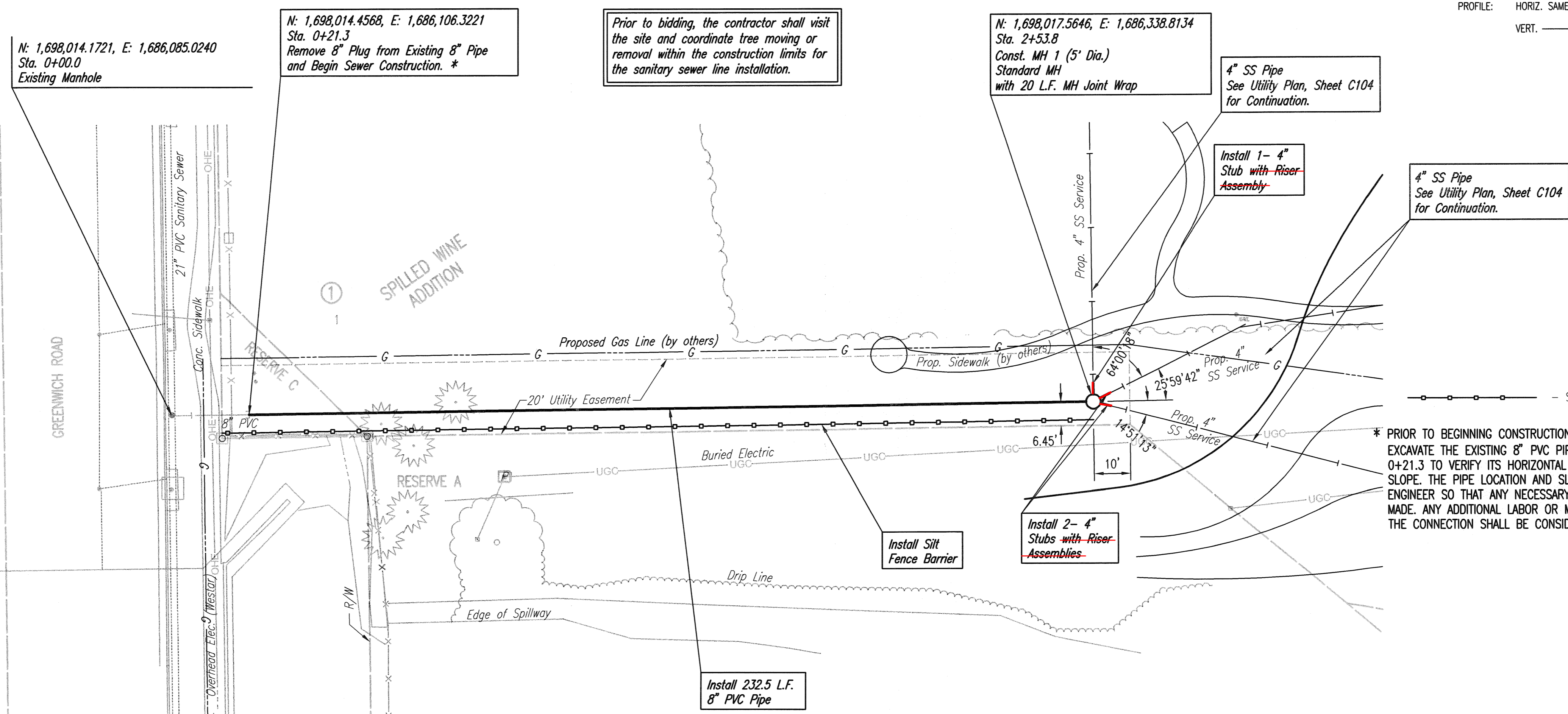
ARCHITECT:
HUFFT PROJECTS
 321 West 40th Street
 Kansas City, MO 64111
 P: 816-531-0200
 F: 816-531-0201
 www.hufft.com

Hufft Projects, LLC
 Missouri State Certificate of Authority #

ENGINEER:
 P.E.C.
 303 S. Topoka Street
 Wichita, KS 67202
 P: 316-264-0291
 Contact: Mike Kello

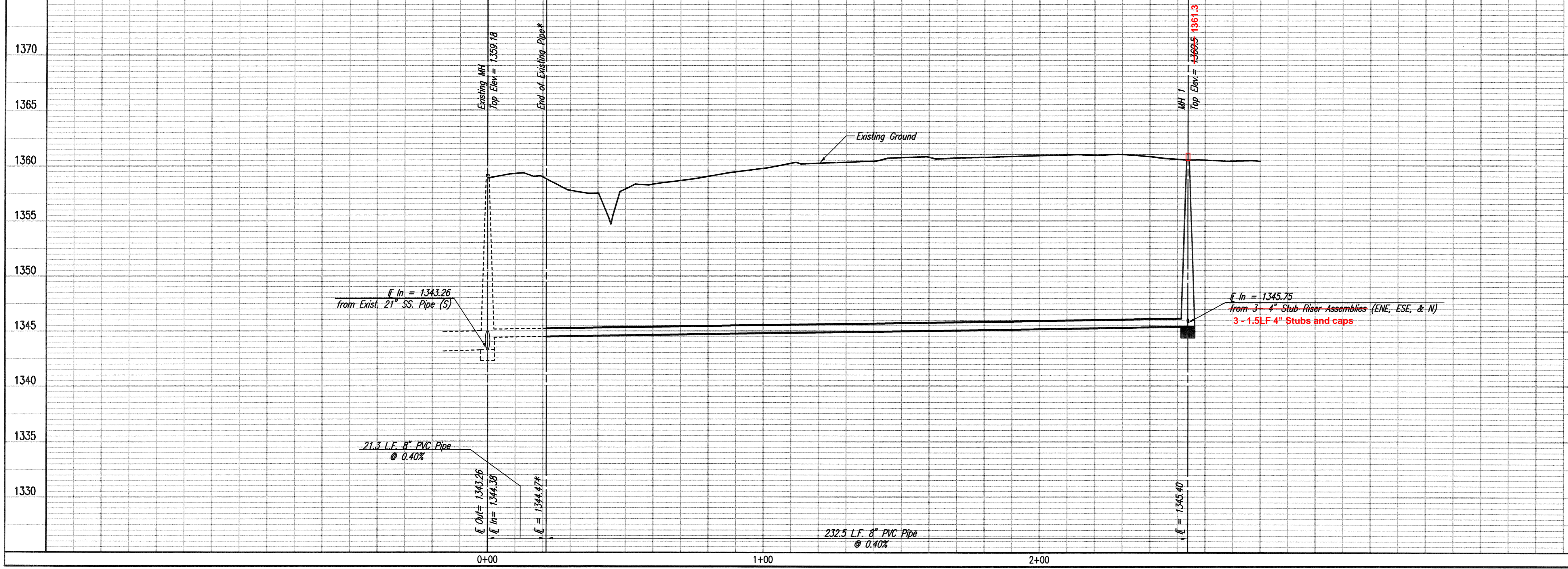
LANDSCAPE:
 40NORTH
 19475 Labor Road
 Weston, MO 64098
 P: 816-270-0215
 Contact: John Galloway

ACOUSTICS:
AVANT ACOUSTICS
 18475 West 86th Street
 Lenexa, KS 66215
 P: 913-888-9111
 F: 913-888-9192
 Contact: Jim Robinson



* PRIOR TO BEGINNING CONSTRUCTION, THE CONTRACTOR SHALL EXCAVATE THE EXISTING 8" PVC PIPE AT SANITARY SEWER STATION 0+21.3 TO VERIFY ITS HORIZONTAL AND VERTICAL LOCATION AND PIPE SLOPE. THE PIPE LOCATION AND SLOPE SHALL BE REPORTED TO THE ENGINEER SO THAT ANY NECESSARY PLAN MODIFICATIONS CAN BE MADE. ANY ADDITIONAL LABOR OR MATERIALS NECESSARY TO COMPLETE THE CONNECTION SHALL BE CONSIDERED SUBSIDIARY TO THE PROJECT.

SANITARY SEWER LINE NO. 1



ISSUE:
CONSTRUCTION DOCUMENTS
 MAY 1, 2014

NO.	DATE	ISSUE

REVISION SCHEDULE:

NO.	DATE	ISSUE

PROFESSIONAL ENGINEERING CONSULTANTS P.A.
 303 SOUTH TOPEKA WICHITA, KS 67202
 316-262-2691 www.pec.com

PEC

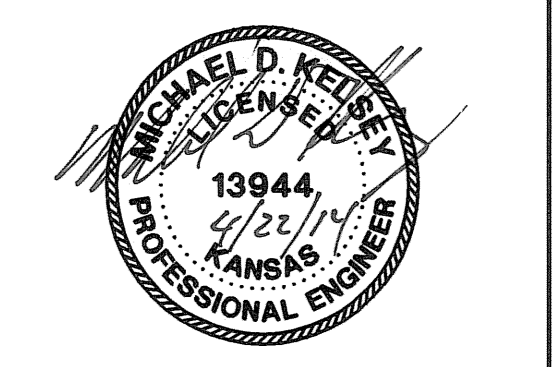
Designed By: **IDK**
 Drawn By: **JAN, CSL**

Job No. **35-13332-002-5505**
 Date **NOVEMBER 2013**

Sheet **C203**

AS BUILTS

KEMILLER ENGINEERING PA
 117 E. Lewis,
 Wichita, KS 67202 (316)264-0242



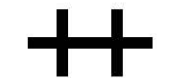
This drawing has been prepared under the architect's supervision. The architect disclaims any responsibility for the existing building structure, existing site conditions, existing construction elements, and any drawings or documents used for this project that are not signed and sealed by the architect. This information is for informational purposes only and is not intended to be used for any other purpose. The information contained herein is and remains the property of Hufft Projects, LLC and receipt or possession of this information confers no right in or license to disclose to others the subject matter contained herein for any but authorized purposes. All rights reserved. Copyright © 2013

Architect: Matthew Hufft
 License Number: MO#
 Drawn By: IDK
 Project Number: Project Number

SANITARY SEWER LINE NO 1

C203

Saved 04-22-2014 10:20:46 AM by JMK
 File Size: 133,062,742,272-2014-03-20-10:20:46 AM
 0, 2013\13352\02_PPHSE_2\PPS\C203_SANITARY_SEWER_LINE_NO_1



PROJECT INFORMATION:

Spilled Wine
2000 N. Greenwich Rd.
Wichita, KS 67206

ARCHITECT:

HUFFT PROJECTS
321 West 40th Street
Kansas City, MO 64111
P: 816.524.3400
F: 816.524.3201
www.hufft.com

ENGINEER:

Huff Projects, LLC
Missouri State Certificate of Authority #

ENGINEER:

P.E.C.
323 S. Topoka Street
Wichita, KS 67202
P: 316.262.2521
Contact: Mike Kelso

LANDSCAPE:

4NORTH
18475 Locust Road
Weston, MO 64088
P: 660.376.0215
Contact: John Galloway

ACOUSTICS:

AVANT ACOUSTICS
18475 Locust Road
Weston, MO 64088
P: 660.376.0215
F: 618.498.9133
Contact: Jim Robinson

CONSTRUCTION DOCUMENTS

MAY 1, 2014

REVISION SCHEDULE:

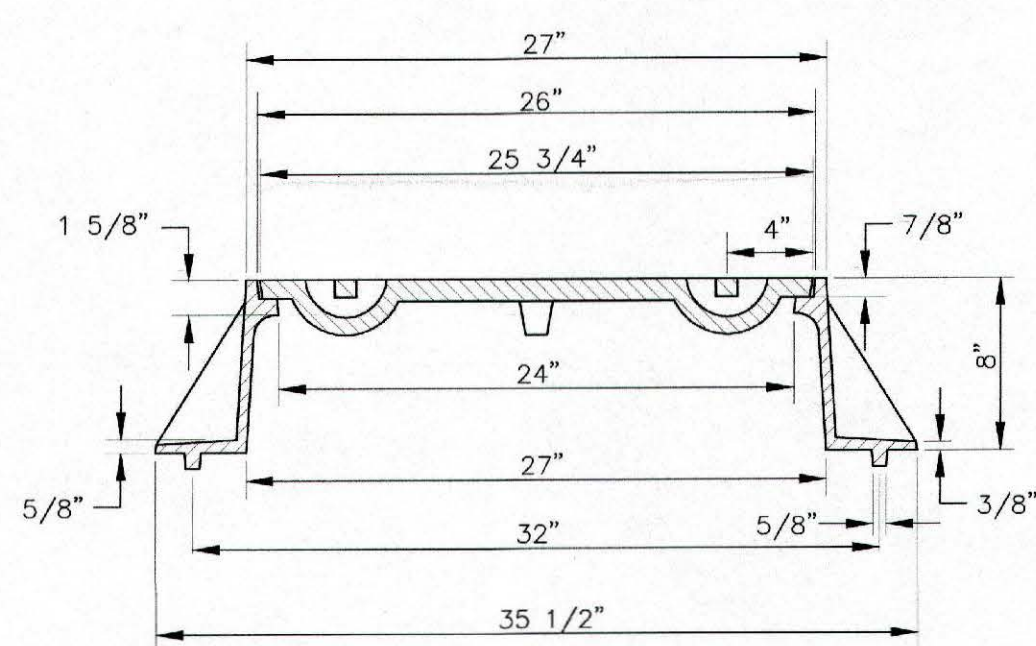
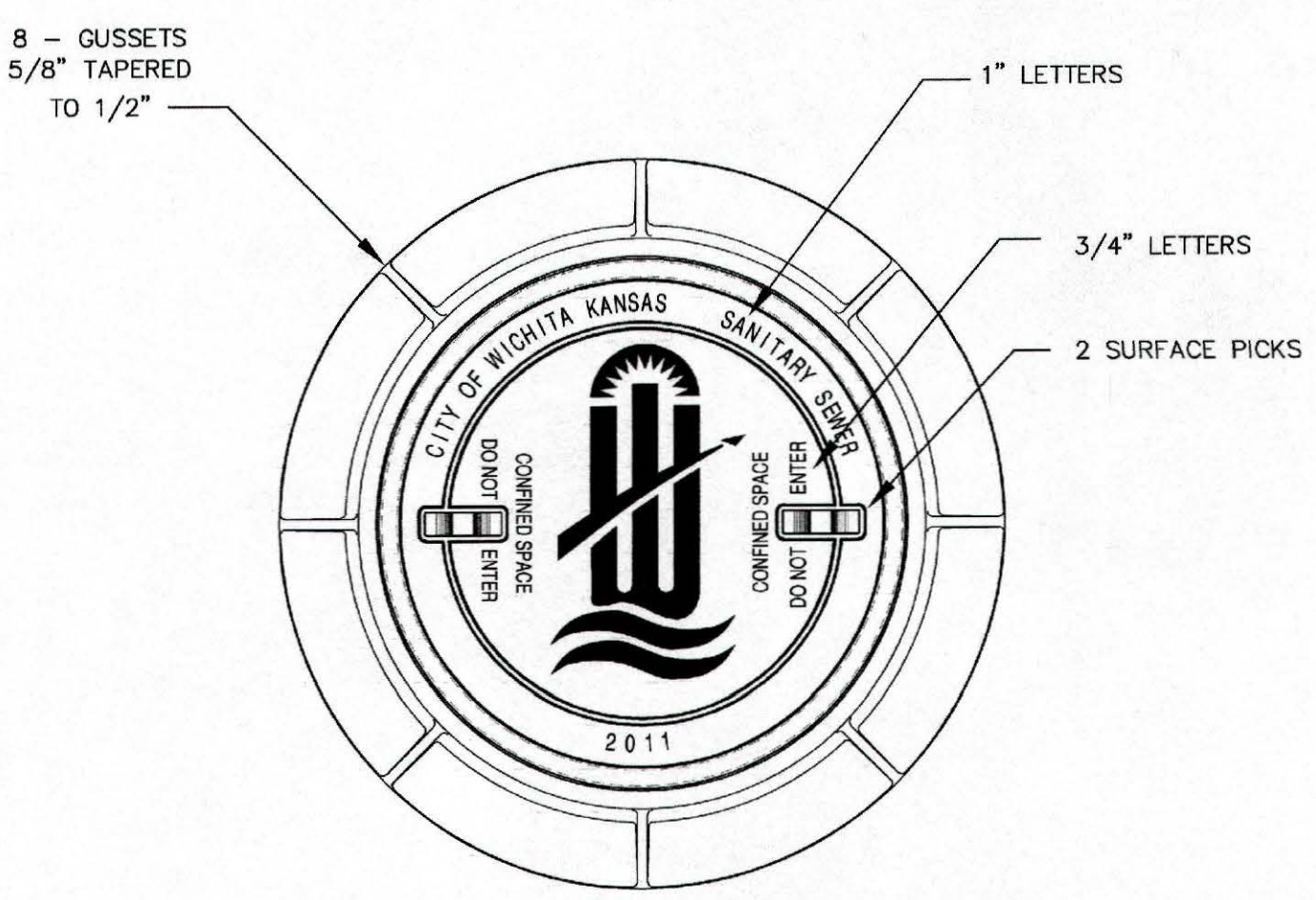
NO.	DATE	ISSUE

This drawing has been prepared under the architect's supervision. The architect disclaims any responsibility for the seating building structure, including site conditions, existing construction elements, and any drawings or documents used for the project that are not signed and sealed by the architect. The information herein is of proprietary nature and is submitted in confidence for the use of our clients only. Unauthorized reproduction, distribution, or dissemination, in whole or in part is prohibited. The information contained herein is and remains the property of Huff Projects, LLC and request or possession of this information confers no right in or license to disclose to others the subject matter contained herein for any but authorized purposes. All rights reserved. Copyright © 2013

Architect: Matthew Huff
License Number: 3024
Drawn By: DRW
Project Number: Project Number

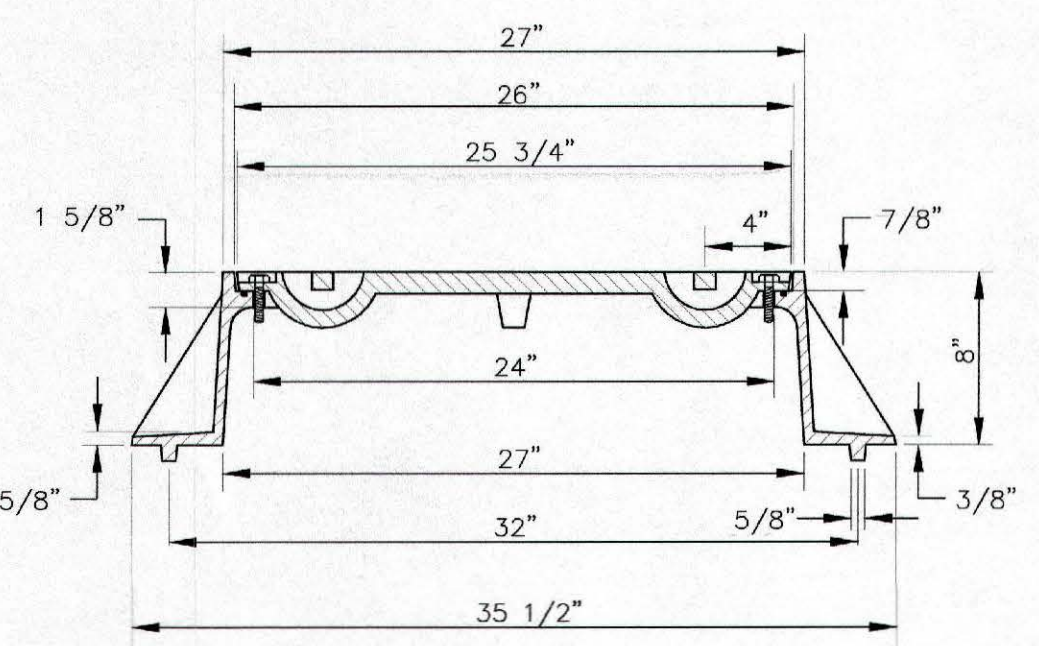
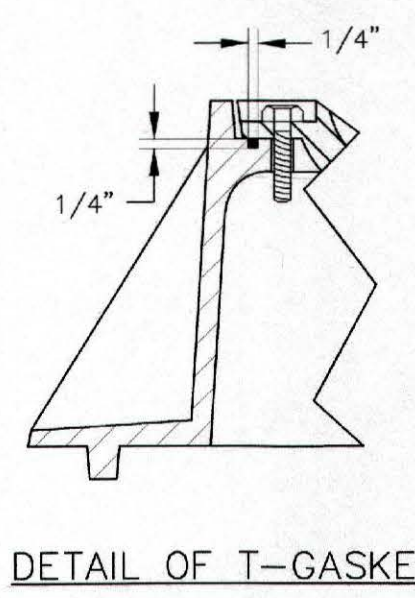
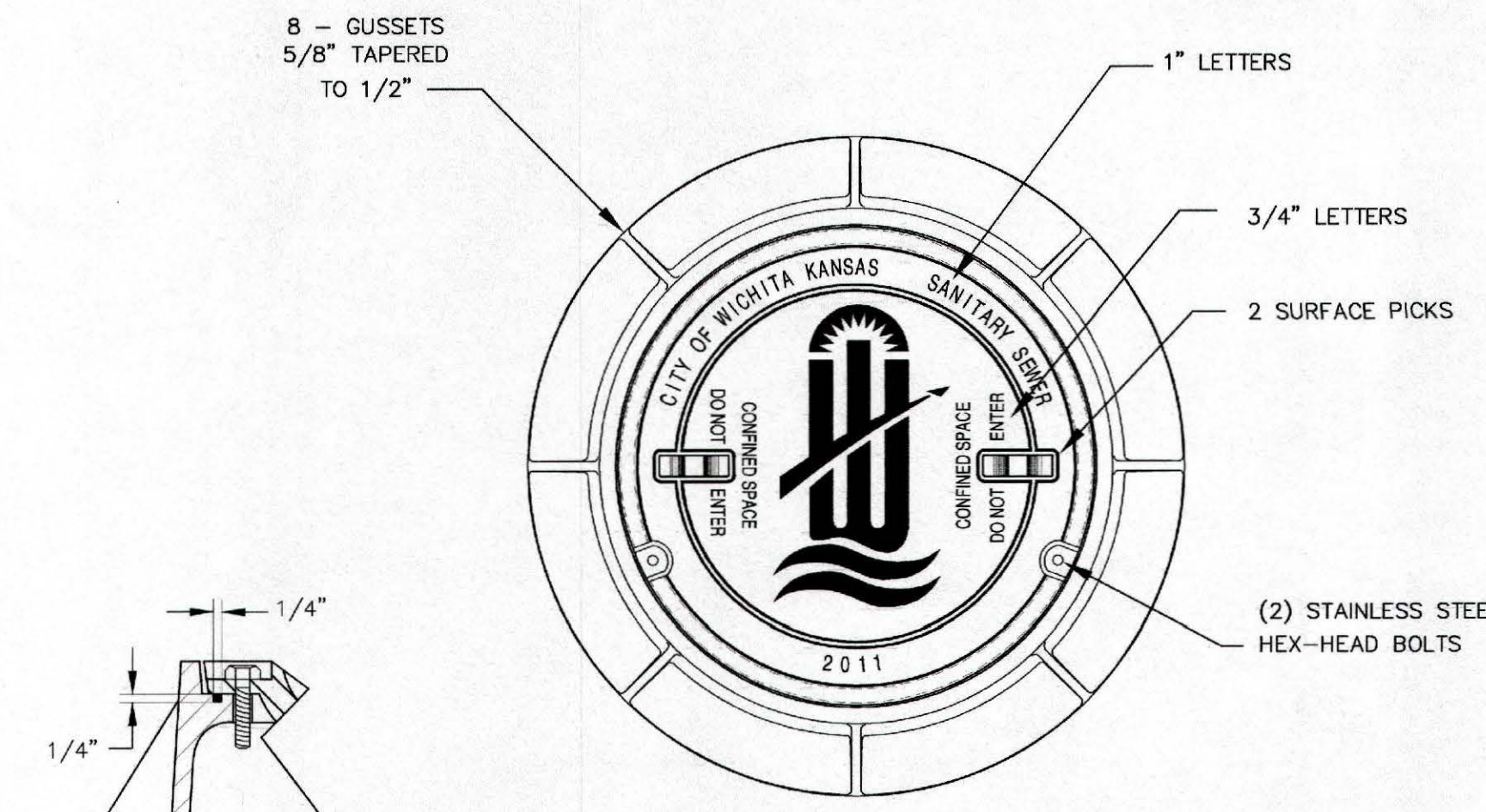
FRAME AND COVER DETAIL

C205



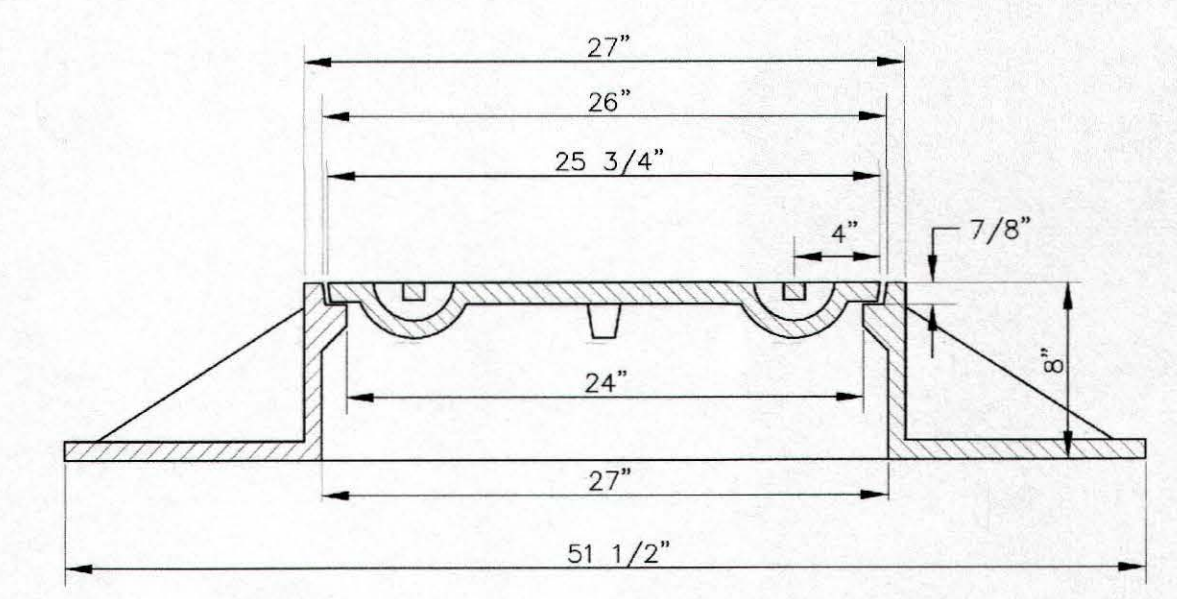
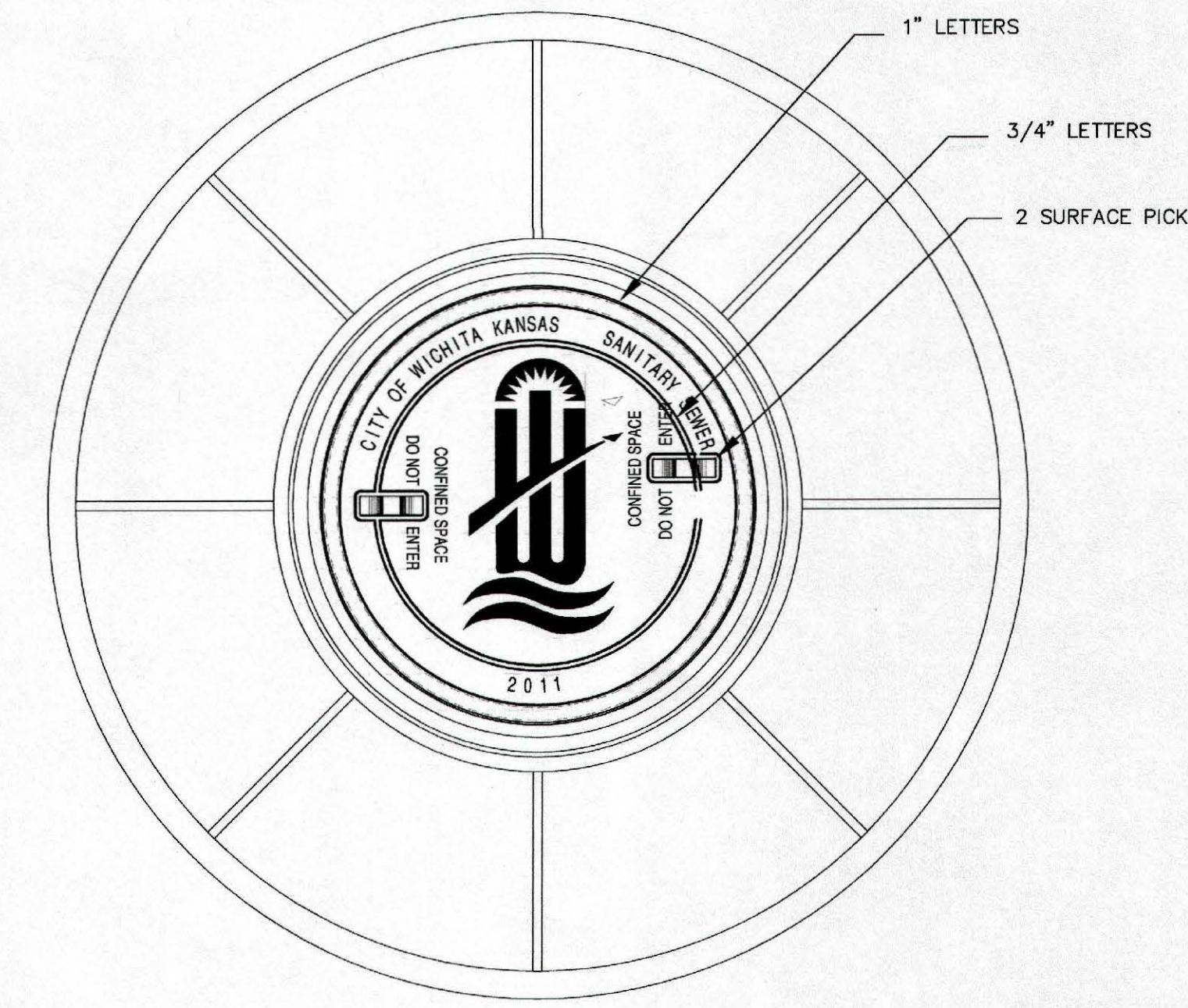
STANDARD MANHOLE FRAME & COVER
DEETER #1261 OR EJIW #1936-Z1

NOTE:
1. FURNISHED WITH MACHINED HORIZONTAL BEARING SURFACE.



BOLT DOWN MANHOLE FRAME & COVER
DEETER #1261 OR EJIW #1936-Z1

NOTE:
1. FURNISHED WITH MACHINED HORIZONTAL BEARING SURFACE.
2. FURNISHED WITH A T-GASKET IN THE FRAME.

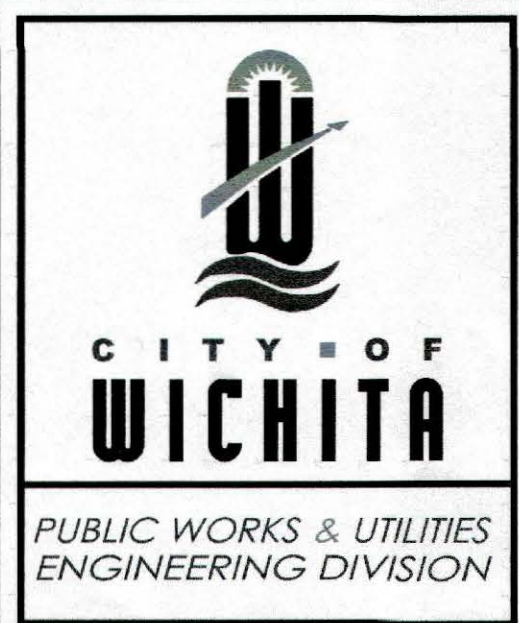
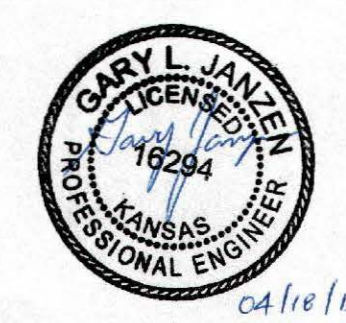


WIDE FLANGED FRAME & COVER
DEETER #1261A

NOTE:
1. FURNISHED WITH MACHINED HORIZONTAL BEARING SURFACE.

GENERAL NOTES

- MANHOLE CASTINGS SHALL BE MANUFACTURED USING GOOD QUALITY GRAY IRON CONFORMING TO CLASS 30 OF A.S.T.M. DESIGNATION A-48. DIMENSIONS SHOWN ON THE DETAILED DRAWINGS SHALL BE CONSIDERED AS MINIMUM REQUIREMENTS AND ANY DEVIATIONS FROM THE DIMENSIONS SHOWN MUST BE SPECIFICALLY APPROVED. THE FINISHED CASTINGS SHALL BE OF UNIFORM QUALITY, FREE FROM BLOWHOLES, POROSITY, HARD SPOTS, SHRINKAGE DISTORTIONS OR OTHER DEFECTS.
- MANHOLE CASTINGS SHALL BE MANUFACTURED SUCH THAT A COVER MANUFACTURED BY ANY ONE FOUNDRY WILL FIT INTERCHANGEABLY INTO A FRAME MANUFACTURED BY ANOTHER FOUNDRY AND STILL MEET ALLOWABLE CLEARANCES AND NON-ROCKING REQUIREMENTS. THIS WILL REQUIRE MANUFACTURING OF THE MATCHING FACES ON THE COVER AND THE FRAME TO CLOSE TOLERANCES.
- THE OUTSIDE CIRCUMFERENCE OF THE VERTICAL FACE OF THE COVER AND THE INSIDE CIRCUMFERENCE OF THE VERTICAL FACE IN THE FRAME RECESS SHALL BE MANUFACTURED TO TOLERANCES SUCH THAT THE CLEARANCE BETWEEN THE COVER AND FRAME WILL NOT EXCEED 1/8" AT ANY POINT AROUND THE CIRCUMFERENCE OF THE COVER. THE SEATING SURFACES BETWEEN THE COVER AND FRAME SHALL BE MACHINED SUCH THAT THESE SEATING SURFACES SHALL MAKE FULL CONTACT FOR THEIR FULL CIRCUMFERENCE TO PRECLUDE THE COVER FROM ROCKING IN THE FRAME.
- THE MANHOLE FRAME AND COVER SHALL BE MARKED WITH LETTERING INDICATING THE NAME OF THE MANUFACTURER AND THE YEAR WHEN THE COVER OR FRAME WAS CAST. THE COVER SHALL BE FURTHER IDENTIFIED WITH REGARDS TO OWNERSHIP USING LETTERS AT LEAST 1 INCH IN HEIGHT. THIS IDENTIFICATION SHALL BE "CITY OF WICHITA SANITARY SEWER". THE TOP SURFACE OF THE COVER SHALL BE MANUFACTURED IN WITH CITY OF WICHITA DESIGN AS INDICATED ON THE DRAWINGS. SMOOTH BLOCKOUTS SHALL BE UTILIZED TO HIGHLIGHT THE LETTERING ON THE COVER SURFACE. THE TOTAL AREA OF SMOOTH SURFACE BLOCKOUT SHALL NOT EXCEED THE AREA AS INDICATED ON THE DRAWING. POSITIONING OF SMOOTH BLOCKOUTS AND LETTERING MAY VARY FROM THAT SHOWN ON THE DETAILED DRAWING.



MANHOLE FRAME AND COVER (SANITARY SEWER)		
CITY ENGINEER GARY JANZEN, P.E.		
PROJECT NUMBER 2193 PPS	OCA NUMBER 607861	DATE 12/2011
CITY ENGINEER'S OFFICE CITY HALL - SEVENTH FLOOR 455 NORTH MAIN STREET WICHITA, KANSAS 67202-1620 (316) 268-4501		SHEET C205

SS-102

Sheet 04-21-2014 08:52:25 AM by JMW
C:\2013\2193 PPS\2193 PPS Frame and Cover Detail

