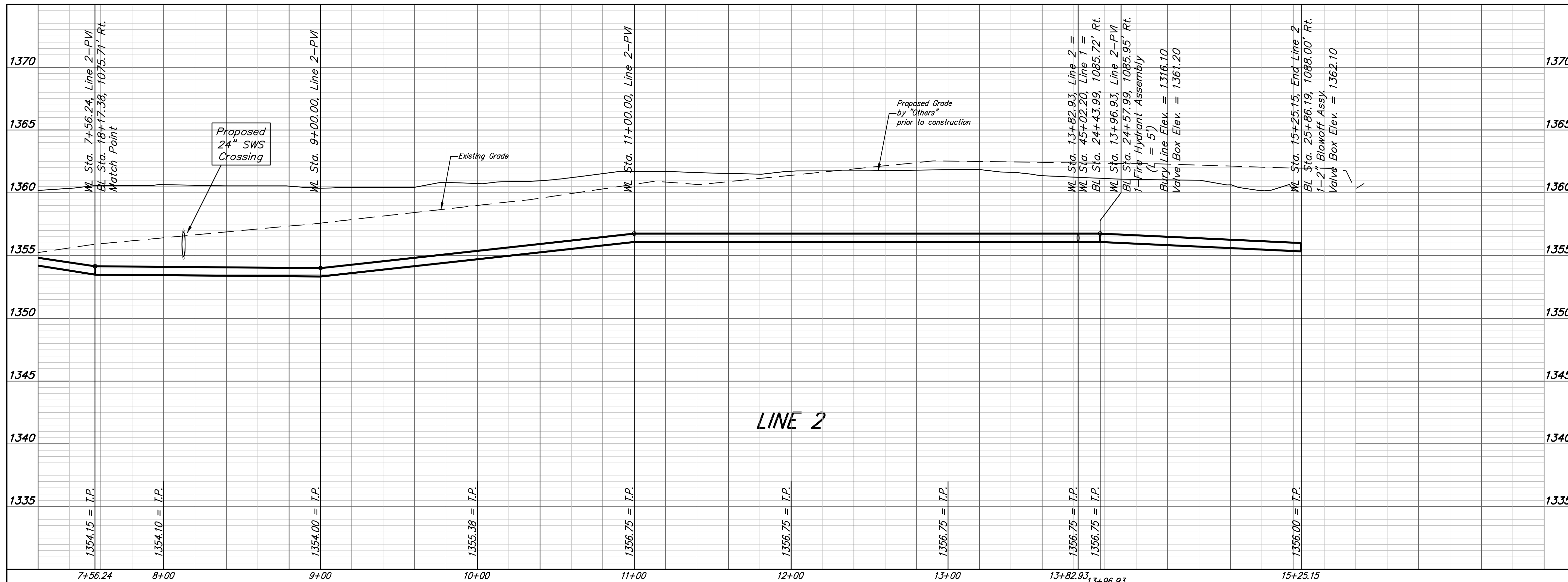
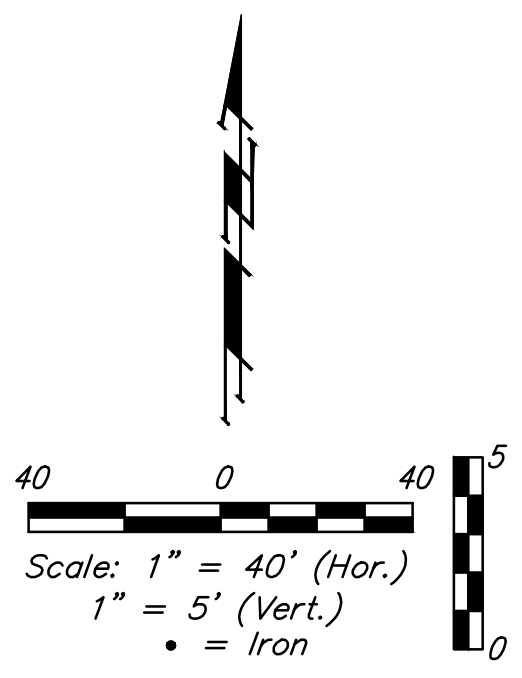
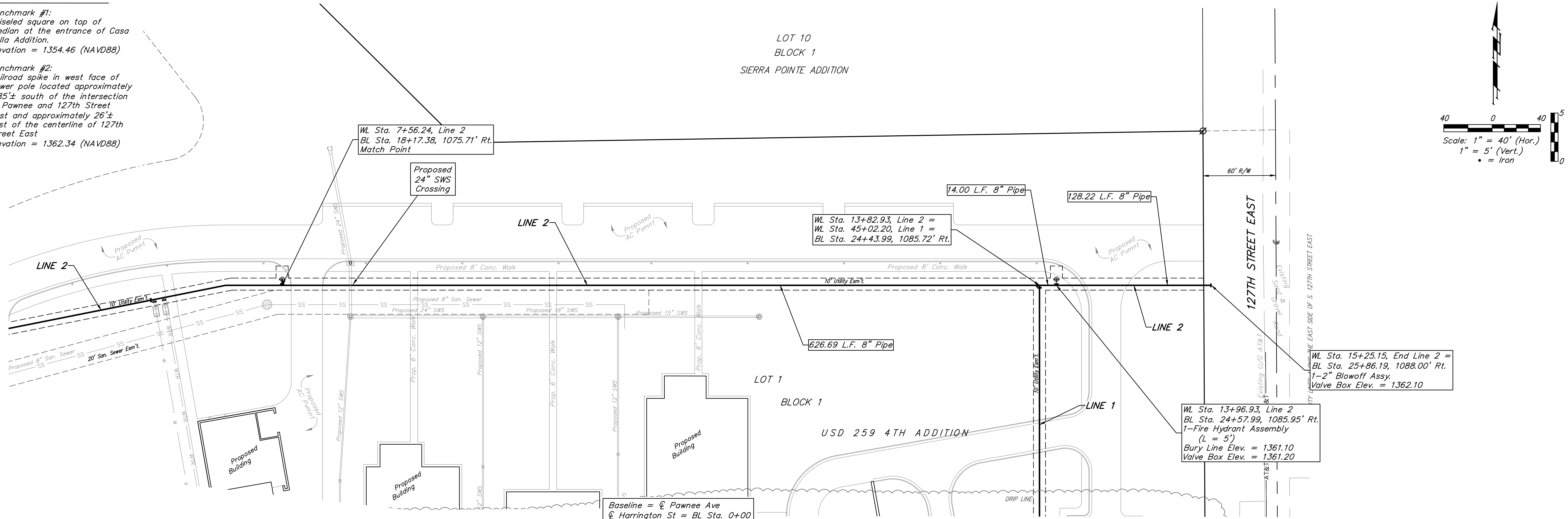


# BENCHMARKS

Benchmark #1:  
Chiseled square on top of median at the entrance of Casa Bella Addition.  
Elevation = 1354.46 (NAVD88)

Benchmark #2:  
Railroad spike in west face of power pole located approximately 1185'± south of the intersection of Pawnee and 127th Street East and approximately 26'± east of the centerline of 127th Street East  
Elevation = 1362.34 (NAVD88)



	USD 259 4TH ADDITION	
	<b>LINE 2</b> Water Distribution System	
<small>Baughman Company, P.A. 315 Ellis St. Wichita, KS 67211 P 316-262-7271 F 316-262-0149 ENGINEERING   SURVEYING   PLANNING   LANDSCAPE ARCHITECTURE</small>		
PROJECT NUMBER 448-90496	DESIGN SPB	DRAWN JAK
REVISIONS:	APPROVED	DATE 11/14
SCALE Noted		SHEET <h2>10 OF 17</h2>