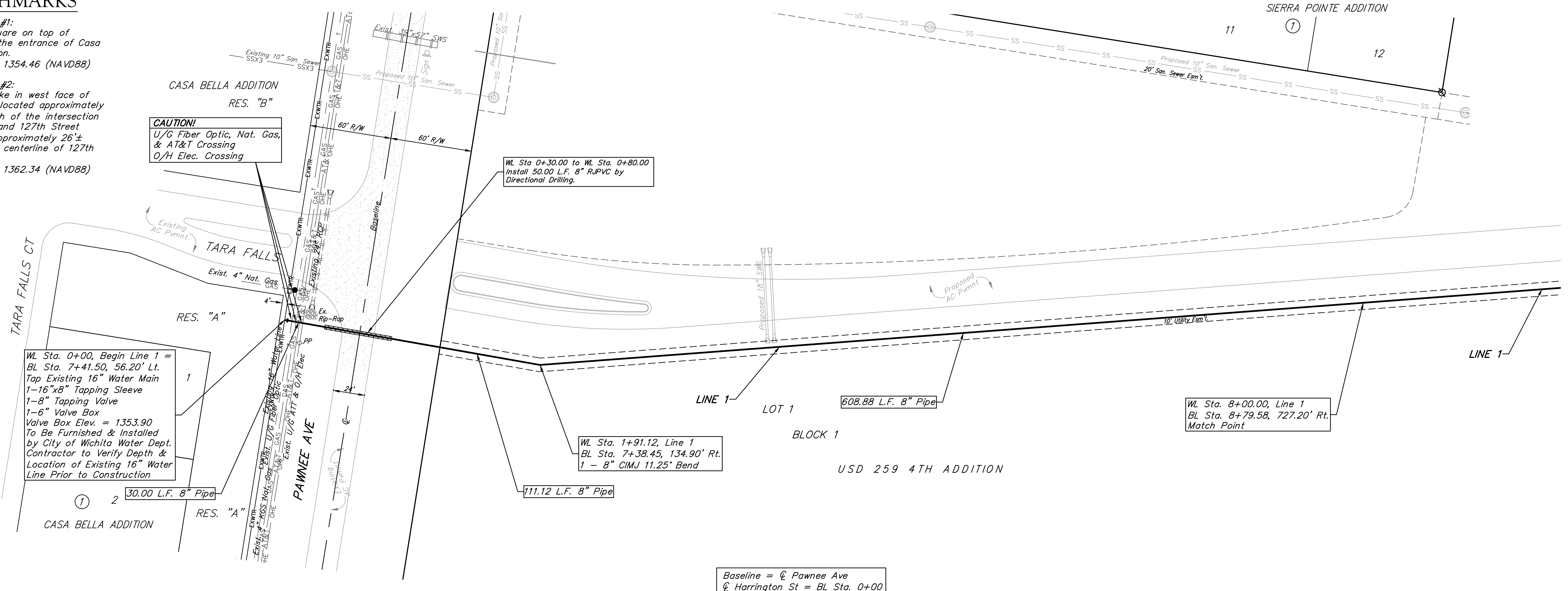


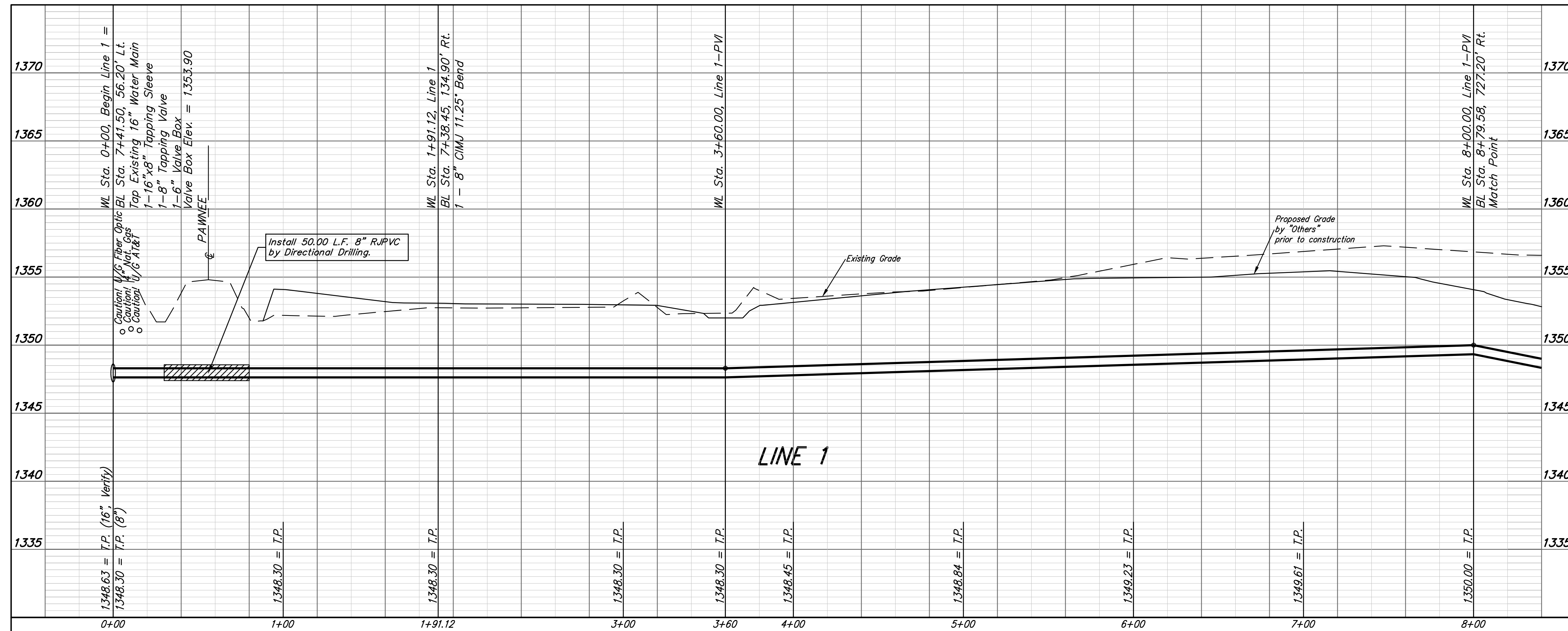
BENCHMARKS

Benchmark #1:
Chiseled square on top of median at the entrance of Casa Bella Addition.
Elevation = 1354.46 (NAVD88)

Benchmark #2:
Railroad spike in west face of power pole located approximately 1185± south of the intersection of Pawnee and 127th Street East and approximately 26± east of the centerline of 127th Street East
Elevation = 1362.34 (NAVD88)



Baseline = ϕ Pawnee Ave
 ϕ Harrington St = BL Sta. 0+00



		USD 259 4TH ADDITION	
		LINE 1	
Water Distribution System		Baughman Company, P.A. 315 Ellis St. Wichita, KS 67211 P 316-262-7271 F 316-262-0149	
PROJECT NUMBER 448-90496		DESIGN SPB	DRAWN JAK
REVISIONS:		APPROVED	DATE 11/14
		SCALE Noted	SHEET
		4 OF 17	