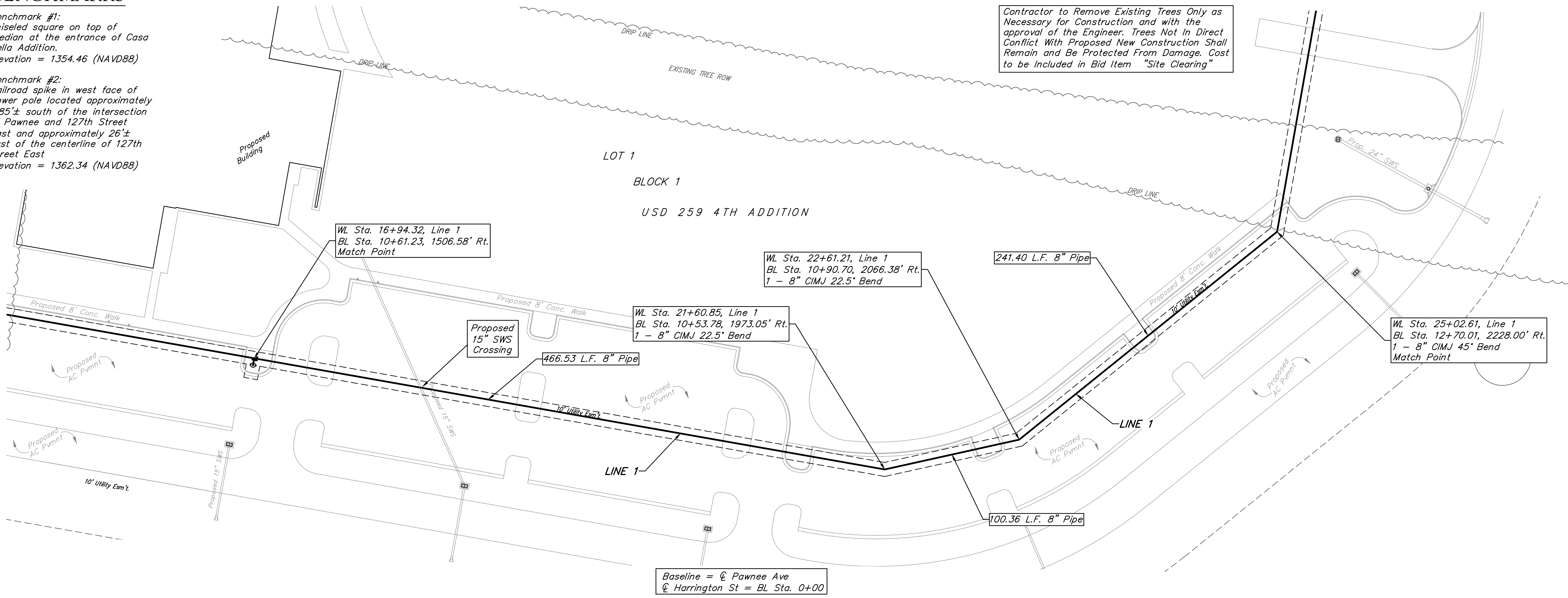


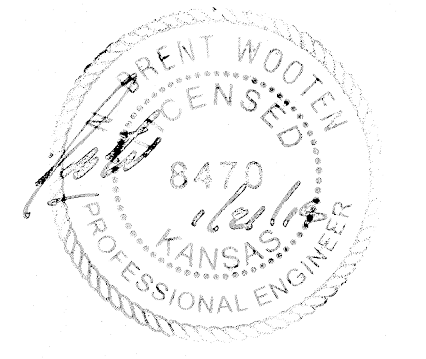
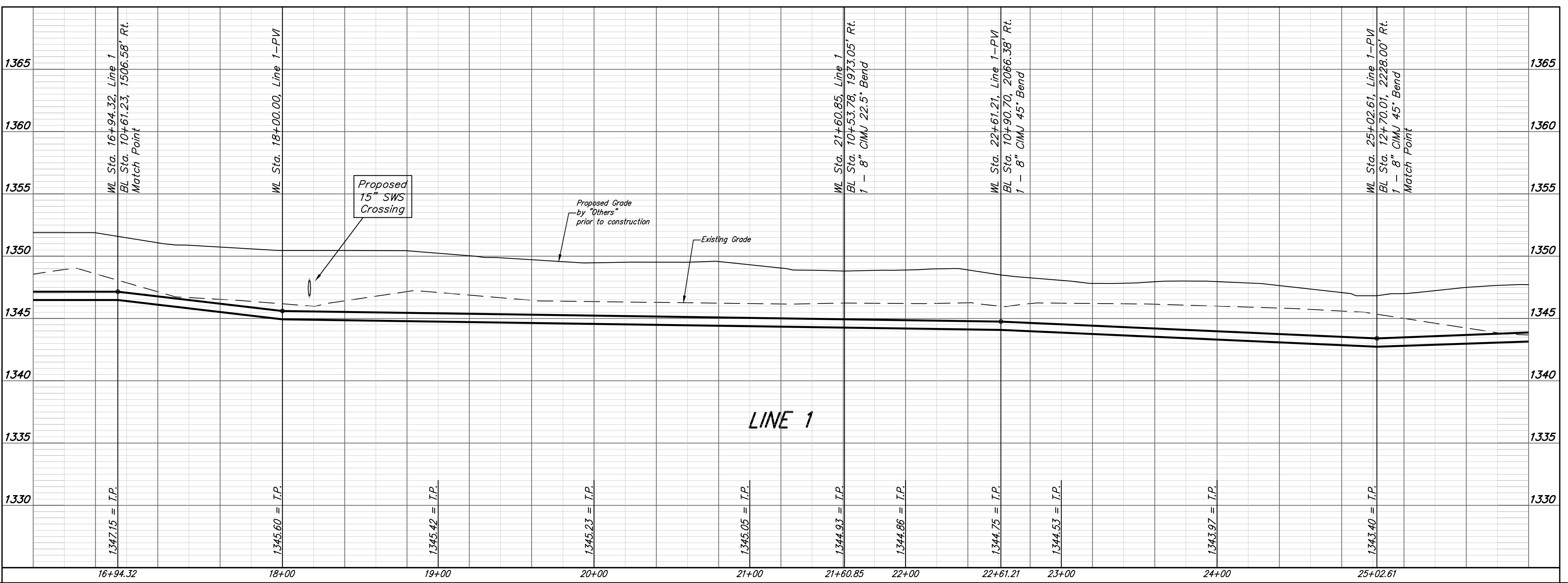
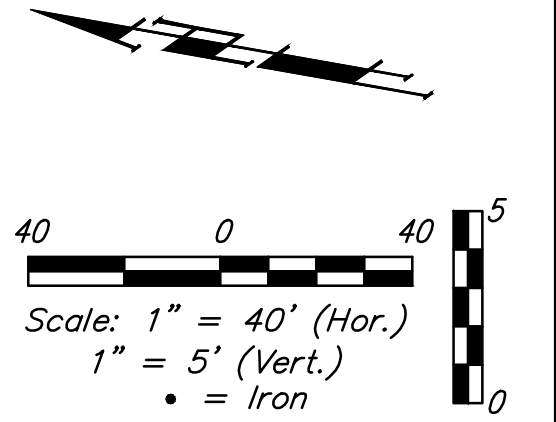
# BENCHMARKS

Benchmark #1:  
Chiseled square on top of median at the entrance of Casa Bella Addition.  
Elevation = 1354.46 (NAVD88)

Benchmark #2:  
Railroad spike in west face of power pole located approximately 1185'± south of the intersection of Pawnee and 127th Street East and approximately 26'± east of the centerline of 127th Street East  
Elevation = 1362.34 (NAVD88)



Contractor to Remove Existing Trees Only as Necessary for Construction and with the approval of the Engineer. Trees Not in Direct Conflict With Proposed New Construction Shall Remain and Be Protected From Damage. Cost to be Included in Bid Item "Site Clearing"



		USD 259 4TH ADDITION	
		LINE 1	
Baughman Company, P.A. 315 Ellis St. Wichita, KS 67211 P 316-262-7271 F 316-262-0149		ENGINEERING   SURVEYING   PLANNING   LANDSCAPE ARCHITECTURE	
PROJECT NUMBER 448-90496	DESIGN SPB	DRAWN JAK	DATE 11/14
REVISIONS:	APPROVED	SCALE Noted	SHEET
		6 OF 17	