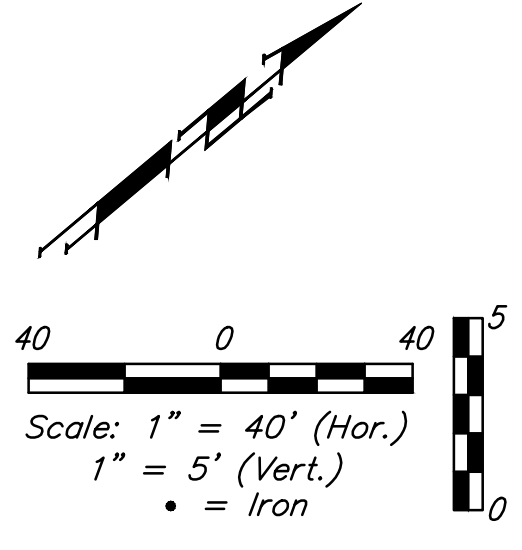
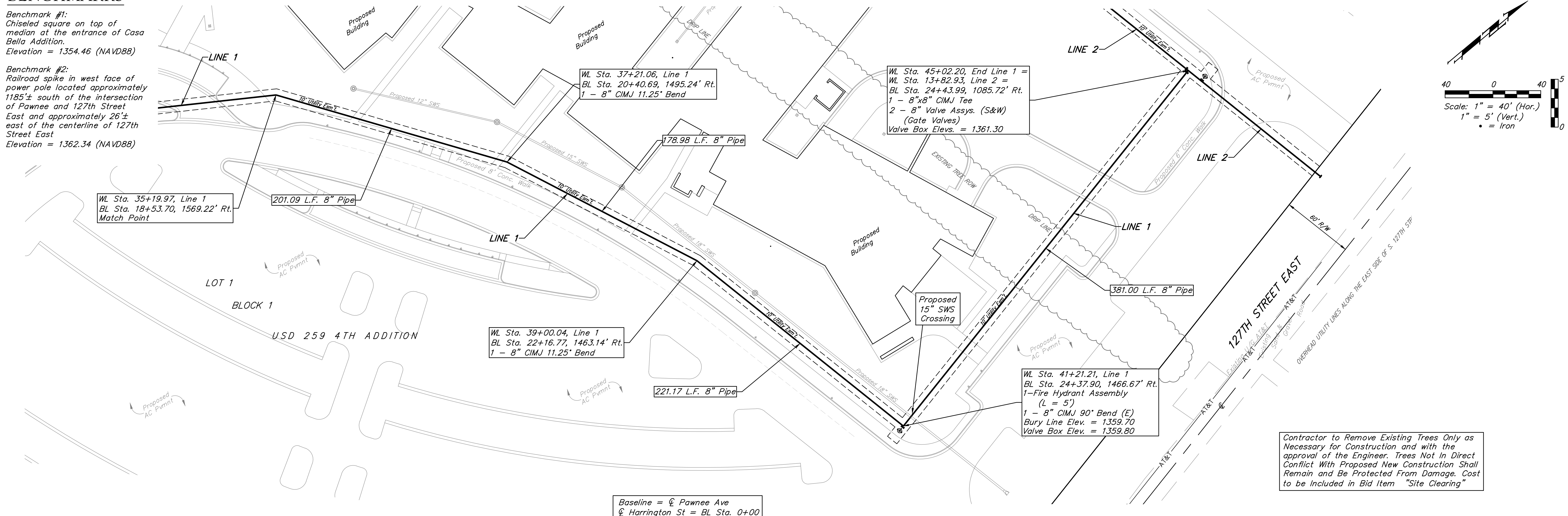


BENCHMARKS

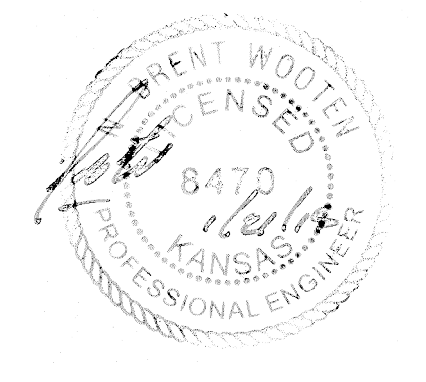
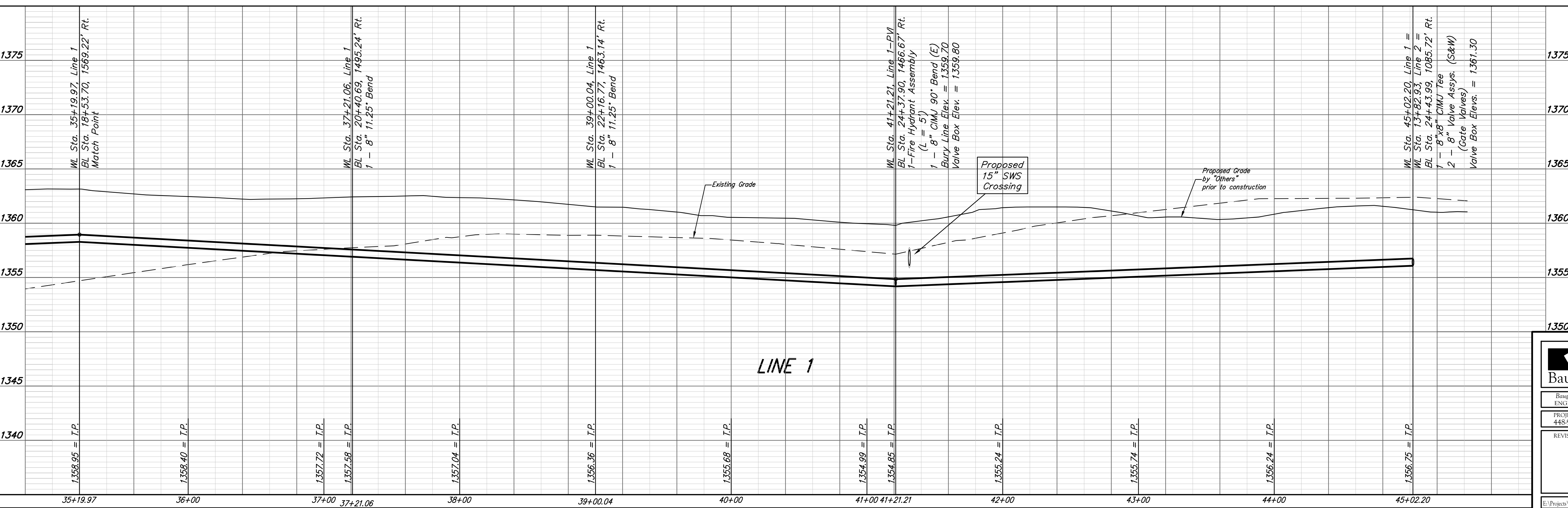
Benchmark #1:
Chiseled square on top of median at the entrance of Casa Bella Addition.
Elevation = 1354.46 (NAVD88)

Benchmark #2:
Railroad spike in west face of power pole located approximately 1185'± south of the intersection of Pawnee and 127th Street East and approximately 26'± east of the centerline of 127th Street East
Elevation = 1362.34 (NAVD88)



Baseline = ϕ Pawnee Ave
 ϕ Harrington St = BL Sta. 0+00

Contractor to Remove Existing Trees Only as Necessary for Construction and with the approval of the Engineer. Trees Not in Direct Conflict With Proposed New Construction Shall Remain and Be Protected From Site Damage. Cost to be Included in Bid Item "Site Clearing"



	USD 259 4TH ADDITION	
	LINE 1 Water Distribution System	
<small>Baughman Company, P.A. 315 Ellis St. Wichita, KS 67211 P 316-262-7271 F 316-262-0149 ENGINEERING SURVEYING PLANNING LANDSCAPE ARCHITECTURE</small>		
PROJECT NUMBER 448-90496	DESIGN SPB	DRAWN JAK
REVISIONS:	APPROVED	DATE 11/14
SCALE Noted		SHEET <h2 style="text-align: center;">8 OF 17</h2>