

BENCHMARKS

Benchmark #1:
Chiseled square on top of median at the entrance of Casa Bella Addition.
Elevation = 1354.46 (NAVD88)

Benchmark #2:
Railroad spike in west face of power pole located approximately 1185± south of the intersection of Pawnee and 127th Street East and approximately 26± east of the centerline of 127th Street East
Elevation = 1362.34 (NAVD88)

Contractor to Remove Existing Trees Only as Necessary for Construction and with the approval of the Engineer. Trees Not in Direct Conflict With Proposed New Construction Shall Remain and Be Protected From Damage. Cost to be Included in Bid Item "Site Clearing"

WL Sta. 6+57.11, Line 2 =
BL Sta. 17+19.10, 1084.34' Rt.
1 - 8"x8" CIMJ Tee
1 - 8" Valve Assy. (S)
(Gate Valve)
Valve Box Elev. = 1360.10

WL Sta. 6+49.11, Line 2 =
BL Sta. 17+11.23, 1085.78' Rt.
1 - 8"x6" CIMJ Tee
1 - 8" Valve Assy. (W)
1 - 6" Valve Assy. (S)
(Gate Valves)
Valve Box Elev. = 1360.00

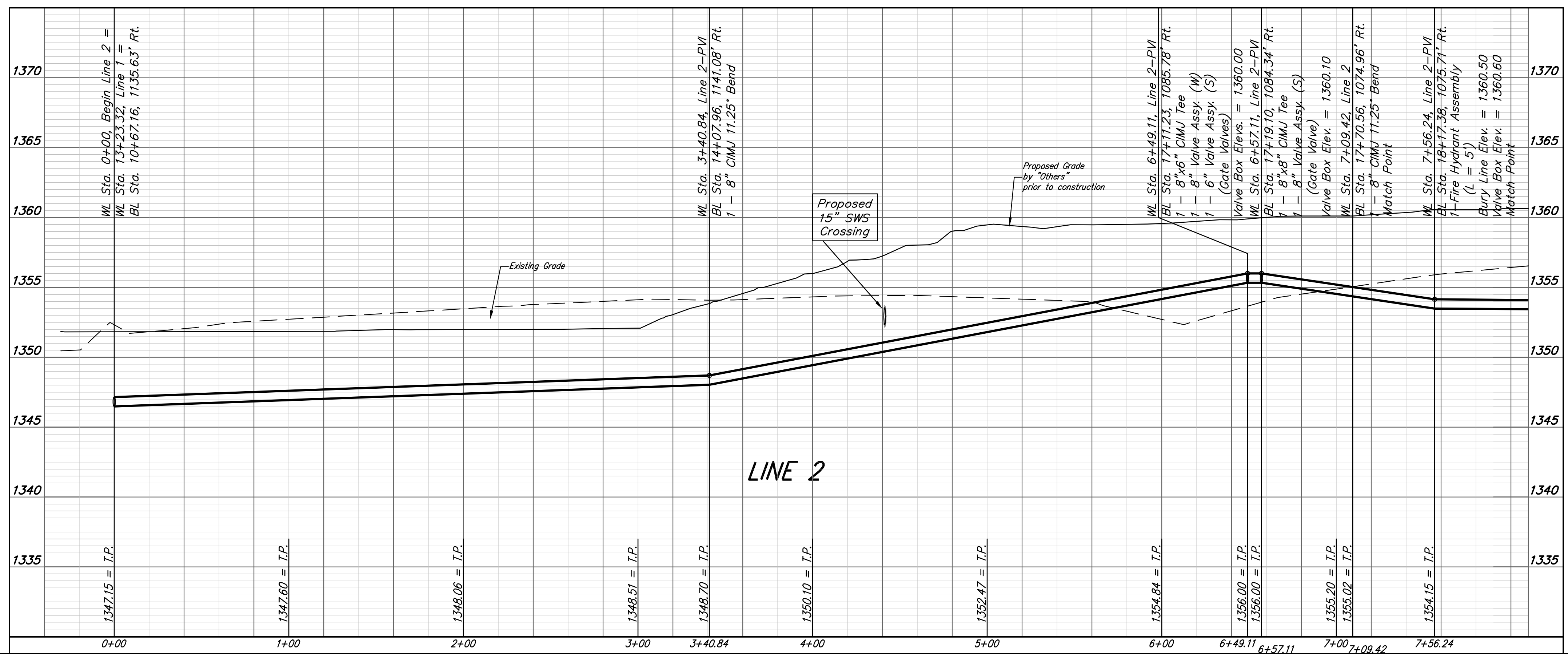
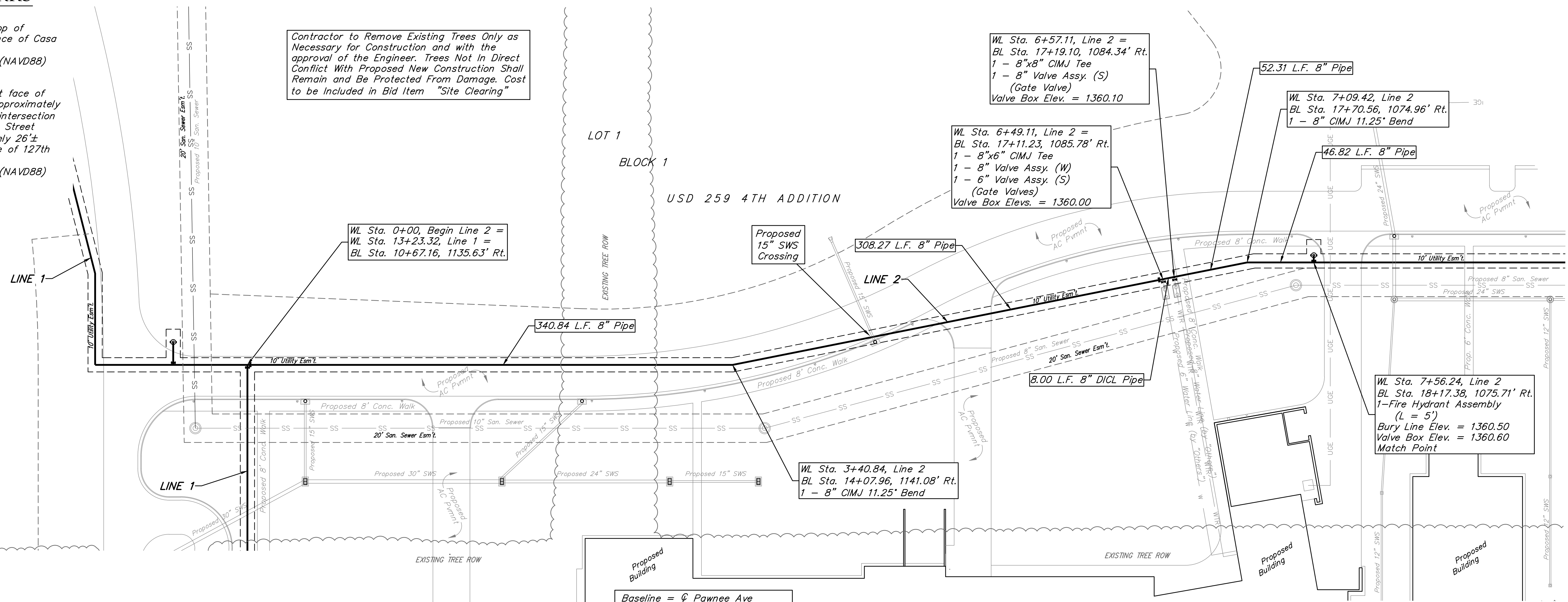
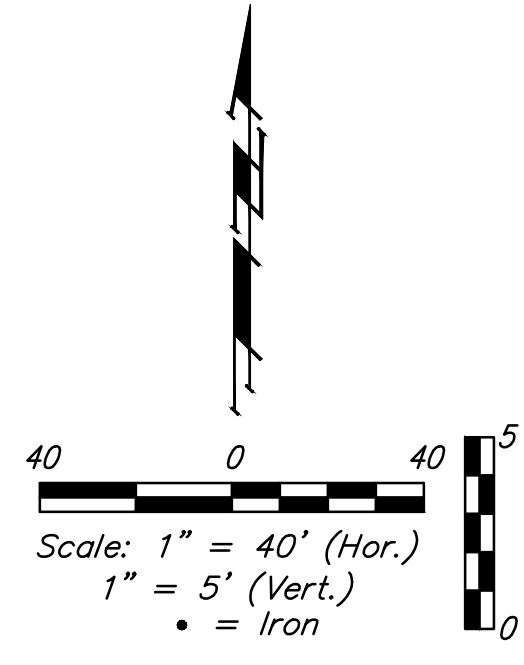
WL Sta. 7+09.42, Line 2
BL Sta. 17+70.56, 1074.96' Rt.
1 - 8" CIMJ 11.25° Bend

WL Sta. 7+56.24, Line 2
BL Sta. 18+17.38, 1075.71' Rt.
1 - Fire Hydrant Assembly
(L = 5')
Bury Line Elev. = 1360.50
Valve Box Elev. = 1360.60
Match Point

WL Sta. 0+00, Begin Line 2 =
WL Sta. 13+23.32, Line 1 =
BL Sta. 10+67.16, 1135.63' Rt.

WL Sta. 3+40.84, Line 2
BL Sta. 14+07.96, 1141.08' Rt.
1 - 8" CIMJ 11.25° Bend

Baseline = ϕ Pawnee Ave
 ϕ Harrington St = BL Sta. 0+00



		USD 259 4TH ADDITION	
		LINE 2	
Water Distribution System		Baughman Company, P.A. 315 Ellis St. Wichita, KS 67211 P 316-262-7271 F 316-262-0149	
ENGINEERING SURVEYING PLANNING LANDSCAPE ARCHITECTURE		PROJECT NUMBER 448-90496	
DESIGN SPB		DRAWN JAK	
APPROVED		DATE 11/14	
SCALE Noted		SHEET	
		9 OF 17	