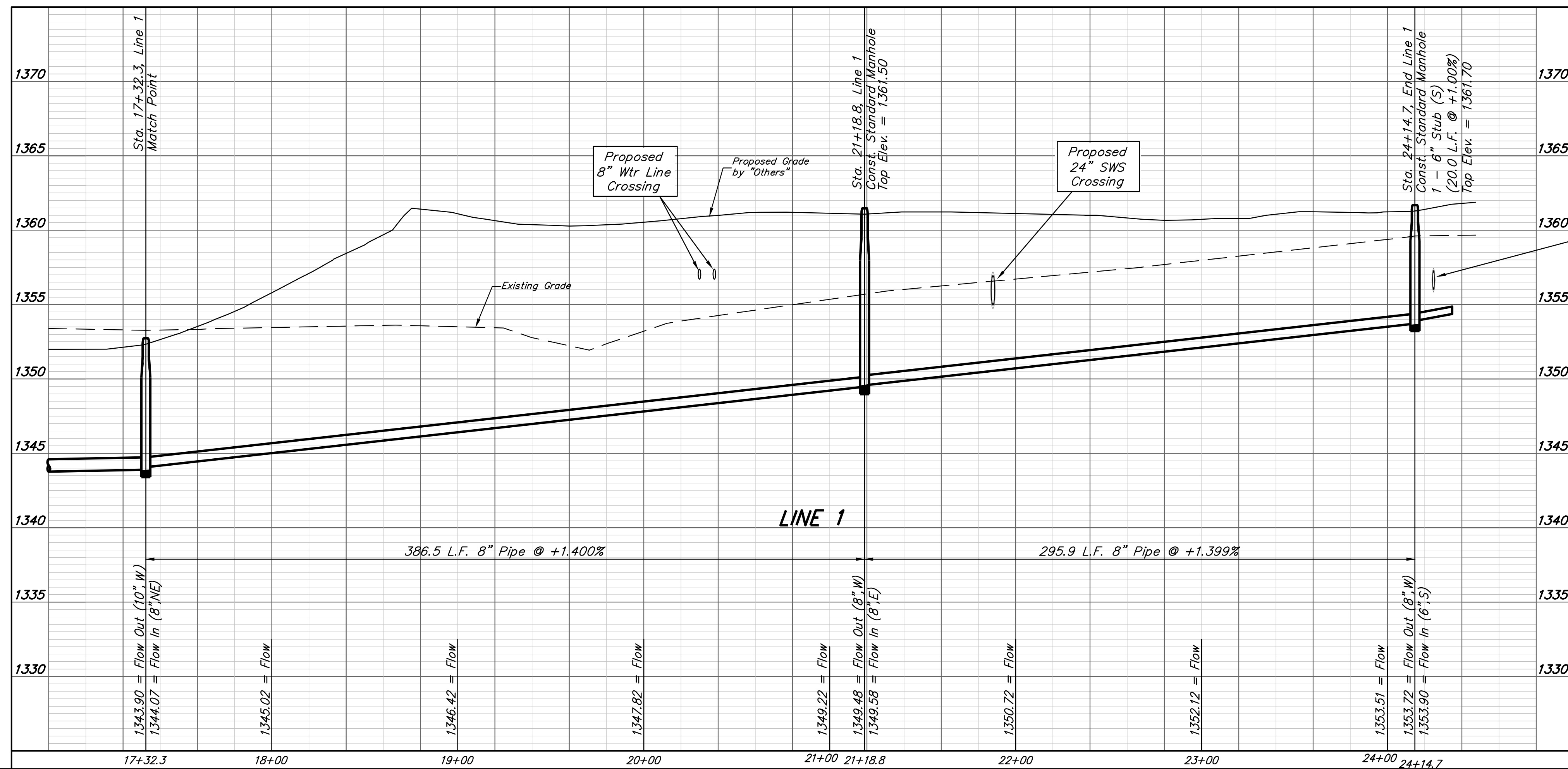
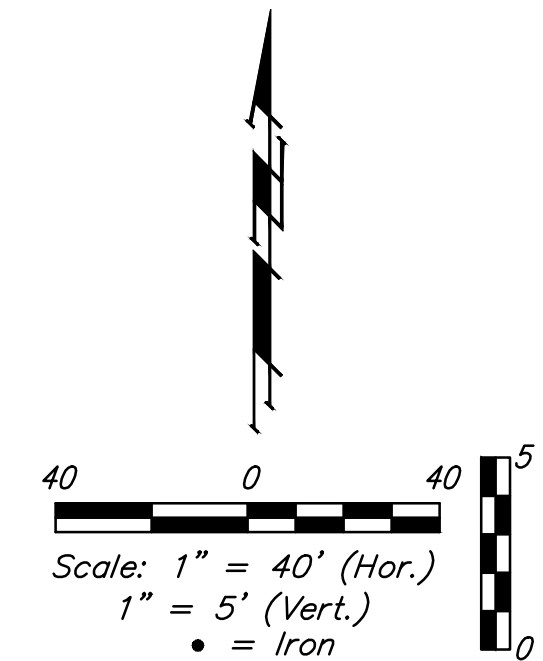
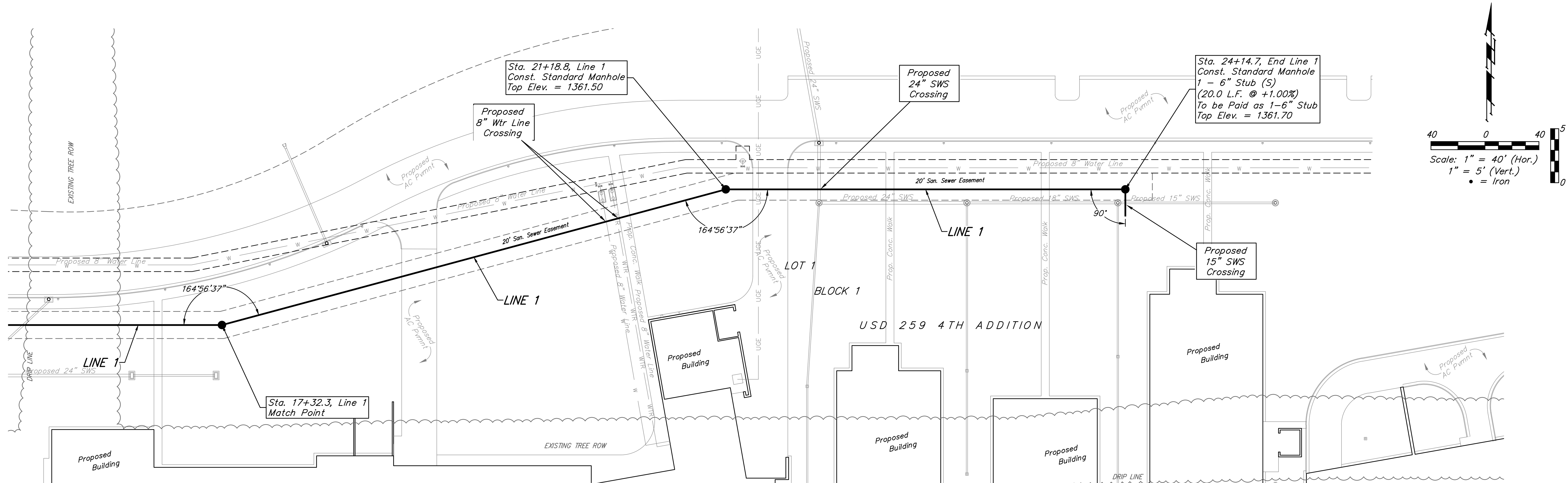


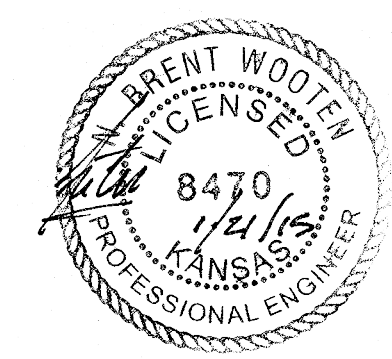
BENCHMARKS

Benchmark #1:
Chiseled square on top of median at the entrance of Casa Bella Addition.
Elevation = 1354.46 (NAVD88)

Benchmark #2:
Railroad spike in west face of power pole located approximately 1185± south of the intersection of Pawnee and 127th Street East and approximately 26± east of the centerline of 127th Street East
Elevation = 1362.34 (NAVD88)



Proposed 15" SWS Crossing



		USD 259 4TH ADDITION	
		LINE 1 Sanitary Sewer Improvements	
<small>Baughman Company, P.A. 315 Ellis St. Wichita, KS 67211 P 316-262-7271 F 316-262-0149 ENGINEERING SURVEYING PLANNING LANDSCAPE ARCHITECTURE</small>			
PROJECT NUMBER	DESIGN	SPB	DRAWN
	APPROVED	JAK	JAK
REVISIONS:	Noted	DATE	11/14
	SHEET	4 OF 13	