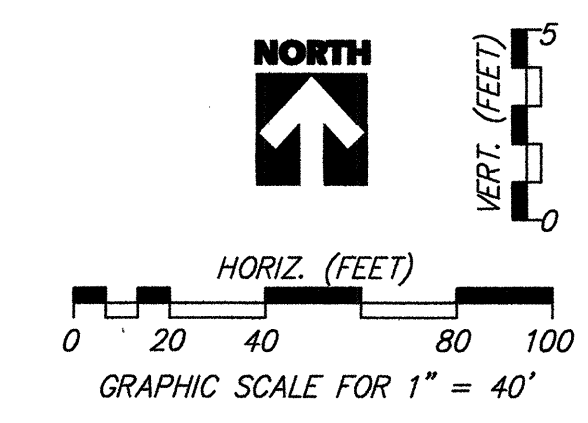
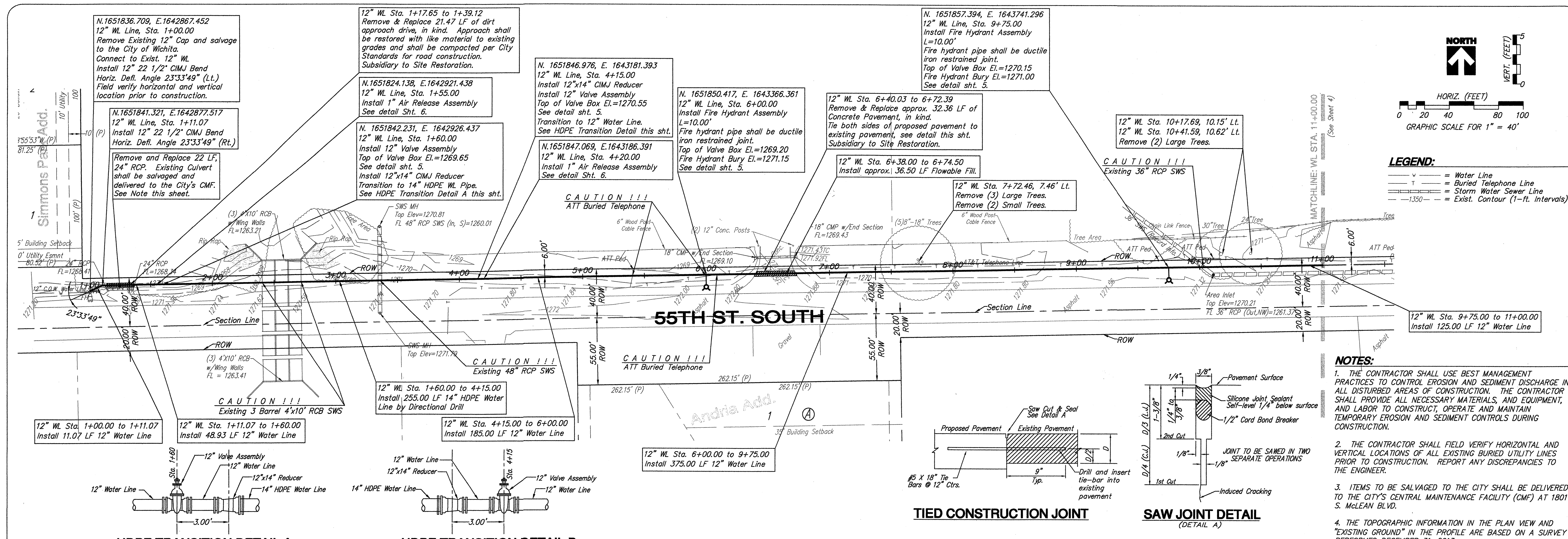


**YOUNG & ASSOCIATES, P.A.**  
Professional Civil Engineering Consultants  
100 S. Georgia, Derby, KS 67037  
Tel: (316) 788-2552, Fax: (316) 788-4408, email: engineering@yanga.com

**12" WATER LINE - STA 1+00.00 to 11+00.00**  
PLAN & PROFILE  
55th Street South 12" Water Main Extension  
City of Wichita  
Sedgewick County, Kansas

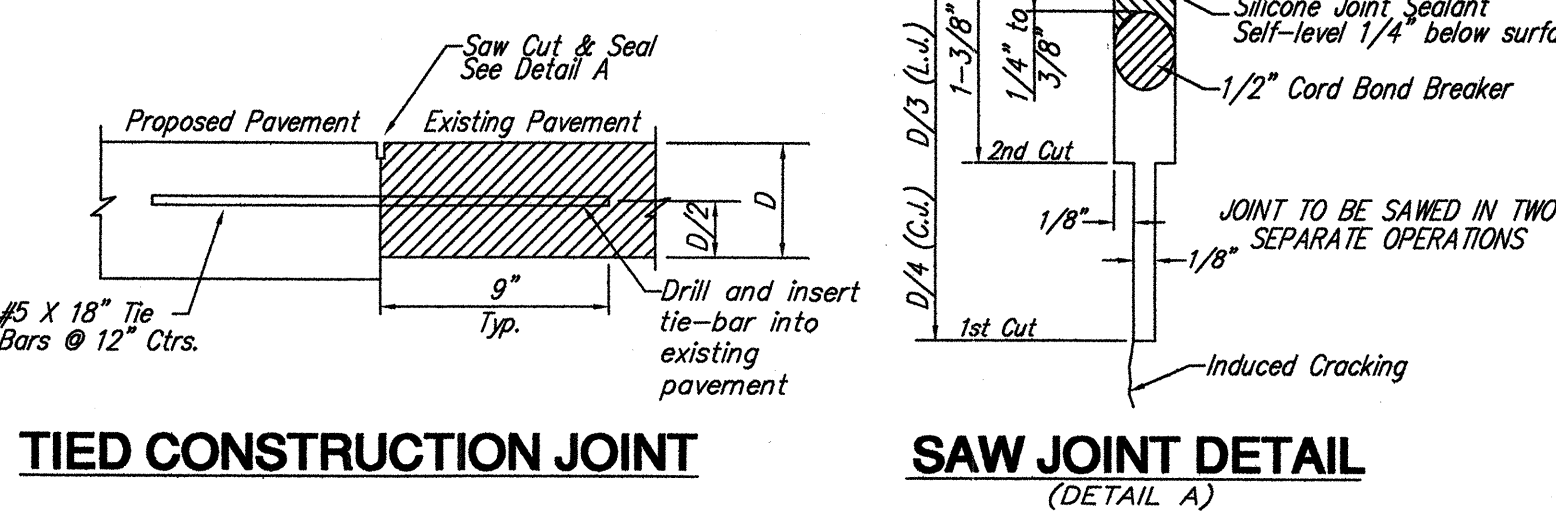
scale: as noted  
Design By: RWG  
Drawn By: DSB  
Checked By: CRY  
P/N: 13-347  
Prints Issued:  
Field Check, 1-20-14  
Office Check, 5-21-14  
Final Plans, 10-30-14  
Revisions:  
△  
△  
△

Sheet No.  
**3** of 14



**LEGEND:**  
 - - - = Water Line  
 - - - = Buried Telephone Line  
 - - - = Storm Water Sewer Line  
 - - - = Exist. Contour (1-ft. Intervals)

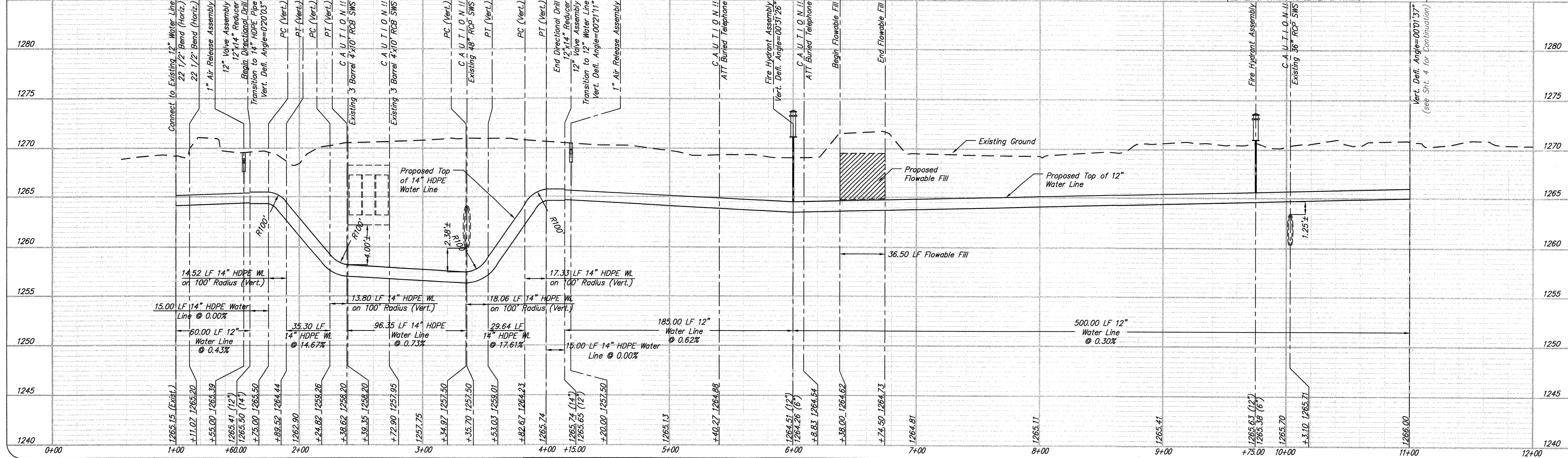
- NOTES:**
1. THE CONTRACTOR SHALL USE BEST MANAGEMENT PRACTICES TO CONTROL EROSION AND SEDIMENT DISCHARGE IN ALL DISTURBED AREAS OF CONSTRUCTION. THE CONTRACTOR SHALL PROVIDE ALL NECESSARY MATERIALS, AND EQUIPMENT, AND LABOR TO CONSTRUCT, OPERATE AND MAINTAIN TEMPORARY EROSION AND SEDIMENT CONTROLS DURING CONSTRUCTION.
  2. THE CONTRACTOR SHALL FIELD VERIFY HORIZONTAL AND VERTICAL LOCATIONS OF ALL EXISTING BURIED UTILITY LINES PRIOR TO CONSTRUCTION. REPORT ANY DISCREPANCIES TO THE ENGINEER.
  3. ITEMS TO BE SALVAGED TO THE CITY SHALL BE DELIVERED TO THE CITY'S CENTRAL MAINTENANCE FACILITY (CMF) AT 1801 S. McLEAN BLVD.
  4. THE TOPOGRAPHIC INFORMATION IN THE PLAN VIEW AND "EXISTING GROUND" IN THE PROFILE ARE BASED ON A SURVEY PERFORMED DECEMBER 31, 2013.



**HDPE TRANSITION DETAIL A**  
Not to Scale

**HDPE TRANSITION DETAIL B**  
Not to Scale

**12" WATER LINE (STA. 1+00.00 to 11+00.00) - PROFILE**



UNLESS OTHERWISE NOTED, DIMENSIONS SHOWN ARE CENTER OF FITTING TO CENTER OF FITTING  
UNLESS OTHERWISE NOTED, ELEVATIONS SHOWN ARE TO TOP OF PIPE