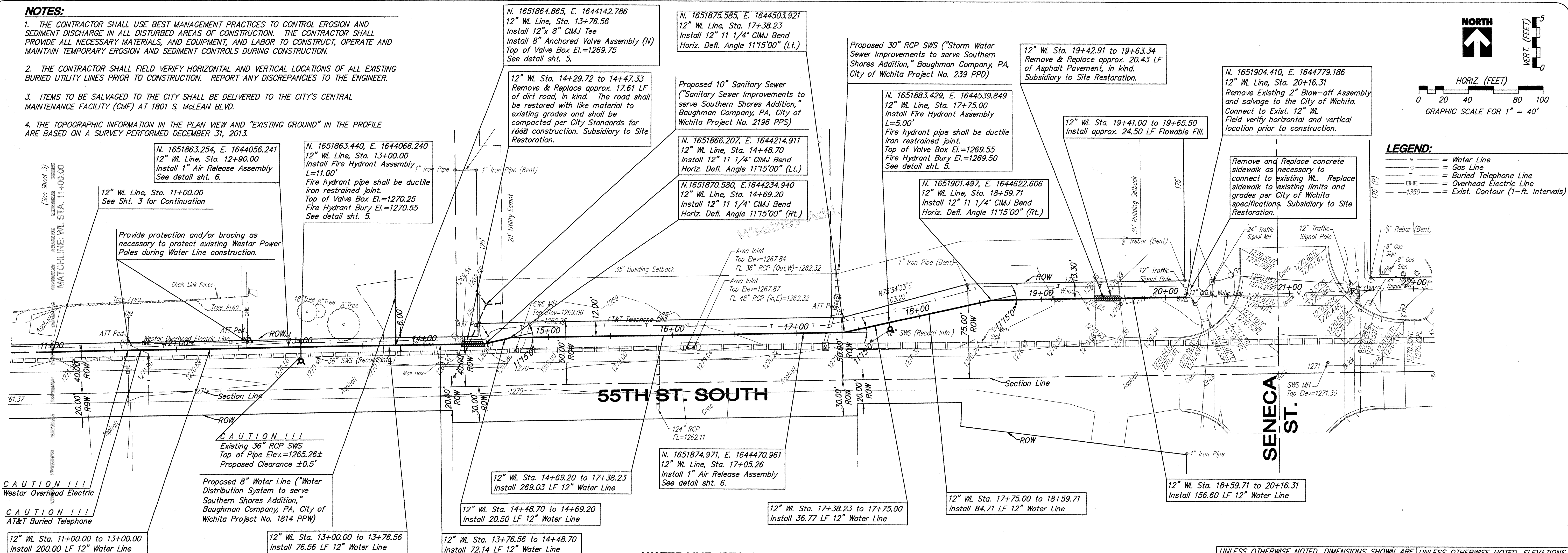
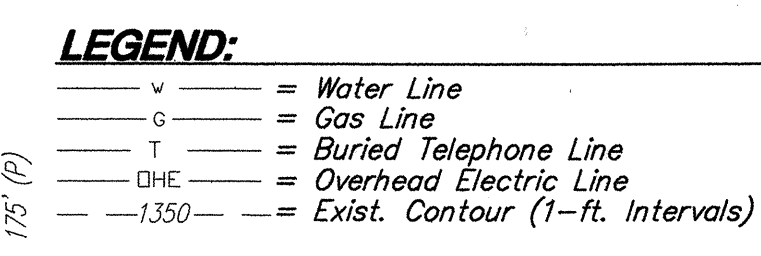
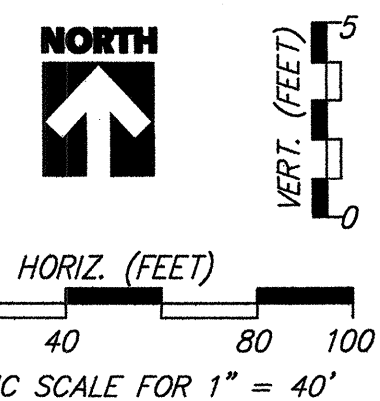
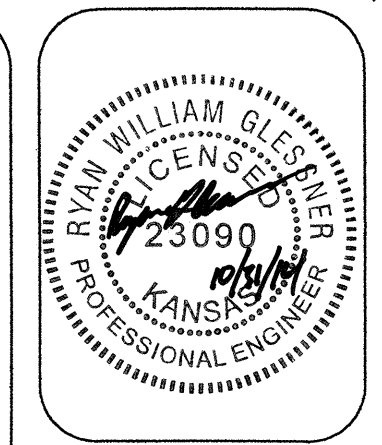
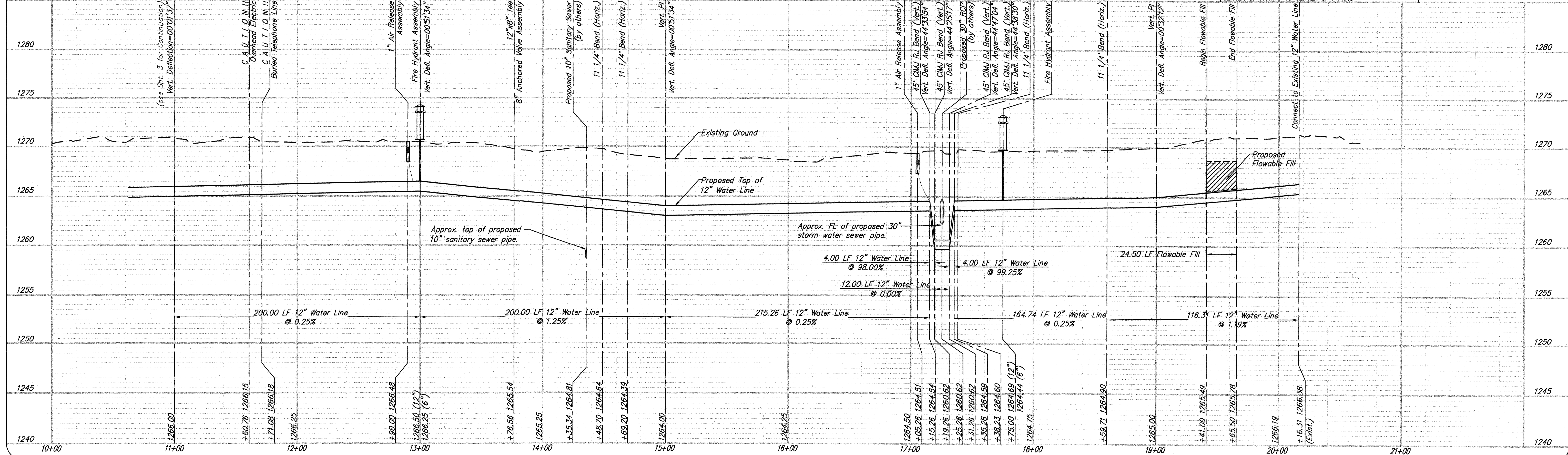


NOTES:

1. THE CONTRACTOR SHALL USE BEST MANAGEMENT PRACTICES TO CONTROL EROSION AND SEDIMENT DISCHARGE IN ALL DISTURBED AREAS OF CONSTRUCTION. THE CONTRACTOR SHALL PROVIDE ALL NECESSARY MATERIALS, AND EQUIPMENT, AND LABOR TO CONSTRUCT, OPERATE AND MAINTAIN TEMPORARY EROSION AND SEDIMENT CONTROLS DURING CONSTRUCTION.
2. THE CONTRACTOR SHALL FIELD VERIFY HORIZONTAL AND VERTICAL LOCATIONS OF ALL EXISTING BURIED UTILITY LINES PRIOR TO CONSTRUCTION. REPORT ANY DISCREPANCIES TO THE ENGINEER.
3. ITEMS TO BE SALVAGED TO THE CITY SHALL BE DELIVERED TO THE CITY'S CENTRAL MAINTENANCE FACILITY (CMF) AT 1801 S. McLEAN BLVD.
4. THE TOPOGRAPHIC INFORMATION IN THE PLAN VIEW AND "EXISTING GROUND" IN THE PROFILE ARE BASED ON A SURVEY PERFORMED DECEMBER 31, 2013.



WATER LINE (STA. 11+00.00 to 20+16.31) - PROFILE



YOUNG & ASSOCIATES, P.A.
 Professional Civil Engineering Consultants
 100 S. Georale, Derby, KS 67037
 Phone: (316) 788-2552, Fax: (316) 788-4408, Email: engineering@yagpa.com

12" WATER LINE - STA 11+00.00 to 20+16.31
PLAN & PROFILE
 55th Street South 12" Water Main Extension
 City of Wichita
 Sedgewick County, Kansas

scale: as noted
 Design By: RWG
 Drawn By: DSB
 Checked By: CRY
 P/N: 13-347
 Prints Issued:
 Field Check, 1-20-14
 Office Check, 5-21-14
 Final Plans, 10-30-14
 Revisions: