

WATER MAIN IMPROVEMENTS TO SERVE MESSIAH BAPTIST CHURCH 4TH ADDITION

Private Project Number: **1858** PPW (607853)

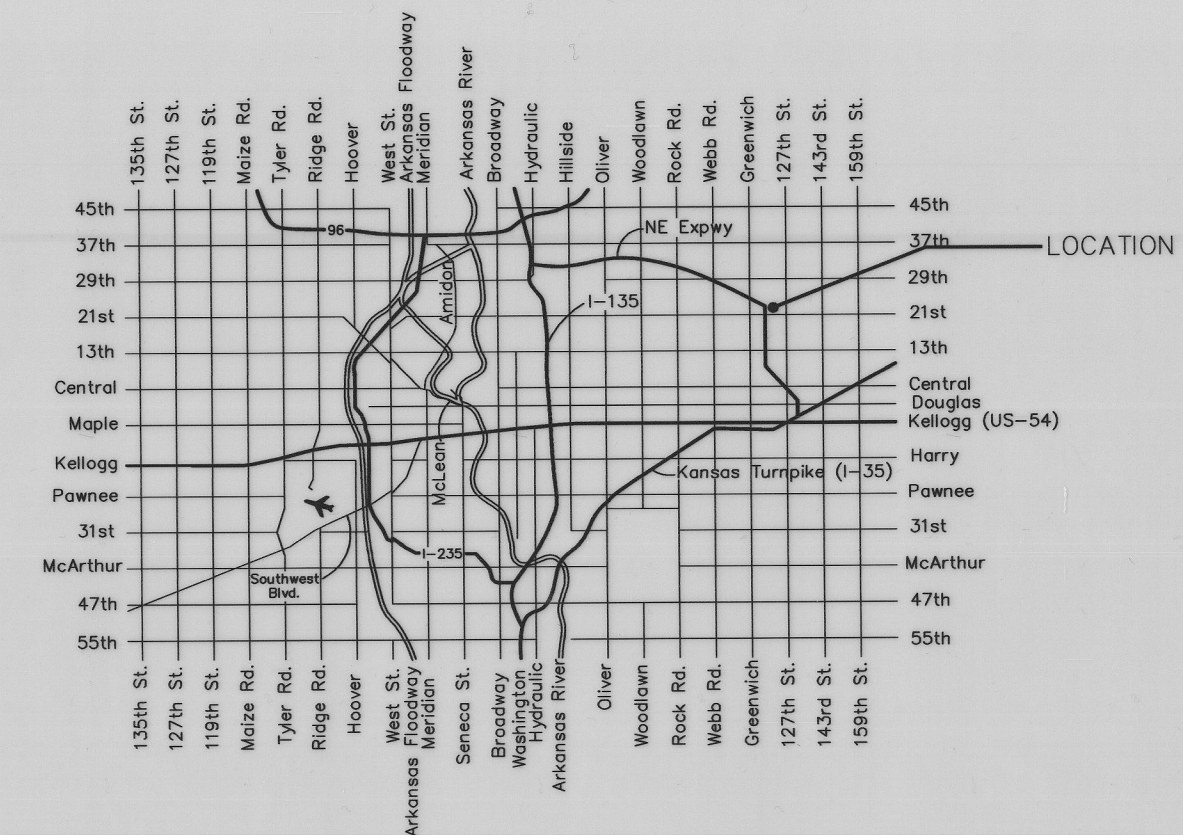
CITY OF WICHITA, KANSAS

Gary Janzen, P.E. City Engineer

November, 2014

AS BUILT PLANS

Contractor: B2 Excavating
Inspector: Fred Smith, Baughman Co.
pdf's by: KEK,12/17/14



Vicinity Map

Index

Cover Sheet	1
Plan/Profile Sheet	2
Details	3
Erosion Details Available on-line at:	
http://wichita.gov/Government/Departments/PWJ/Pages/Regulations.aspx	

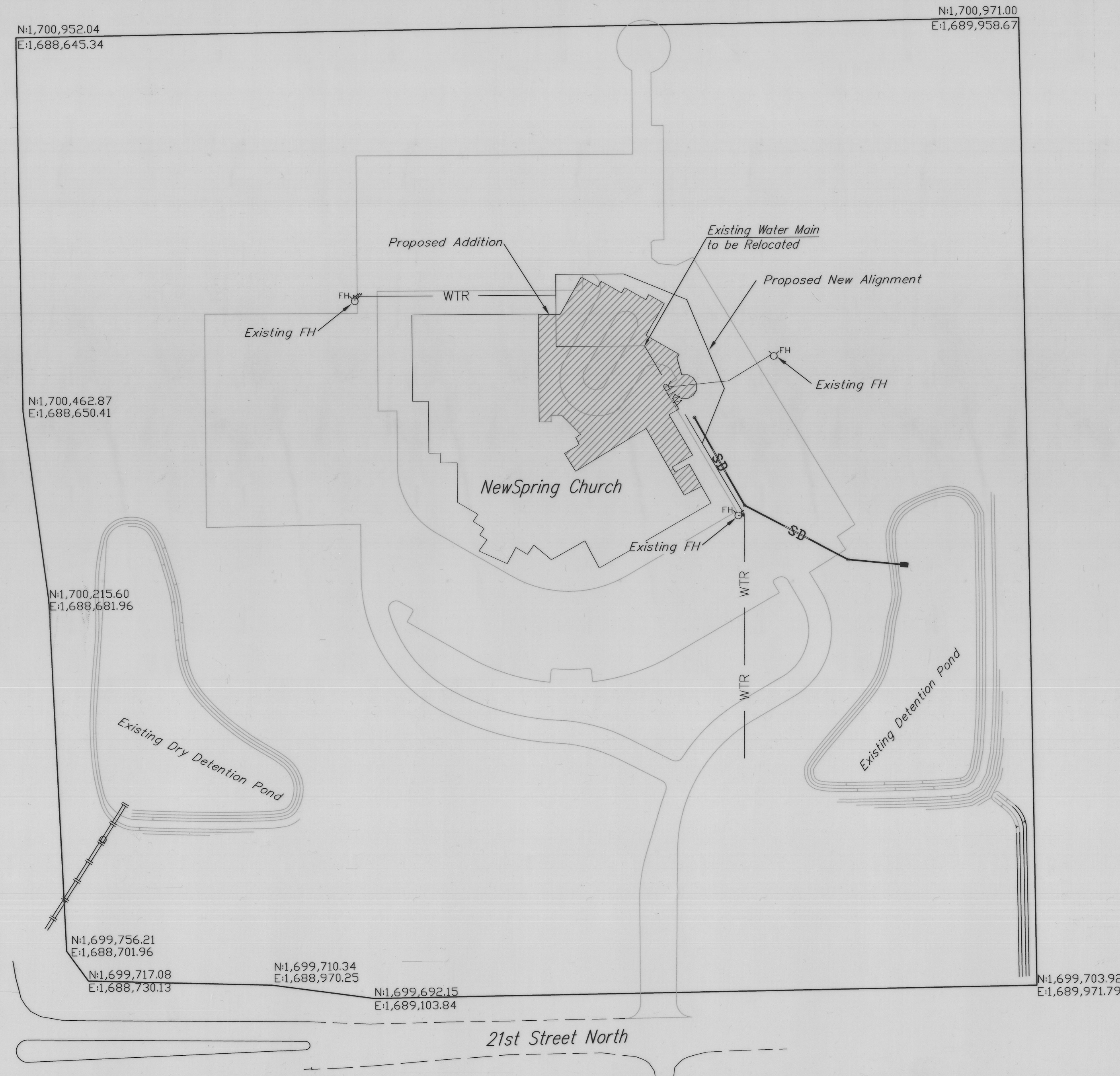
GENERAL NOTES:

- Contractor will be required to provide notice to utility companies a minimum of twenty-four (24) hours prior to any excavation, as follows:

Kansas One-Call	687-2470
-----------------	----------

The Contractor must notify the following in case of an emergency:

Cox Communications, Inc.	262-0661
K.G.E. Electric Service	383-8650
Kansas Gas Service	383-8600
Peoples Gas Company	942-8350
Southwestern Bell Telephone Company	1-571-2611
City of Wichita Water Dept.	268-4908
City of Wichita Traffic Engineering	269-4446
- All construction shall be in accordance with current City of Wichita Standard specifications and special provisions. Water testing shall be completed on the rerouted system.
- Contractor shall not start work on the project until the project inspector is assigned to the project and is present on the site. Any work done without inspection will be required to be uncovered for inspection.
- Rubble from the removal of miscellaneous structures and excess excavation which is to be wasted shall be disposed of on sites to be provided by the Contractor. These sites shall be approved by the Engineer as to suitability, appearance and site location. Locations that, in the opinion of the Engineer, will leave an unsightly appearance will not be approved.

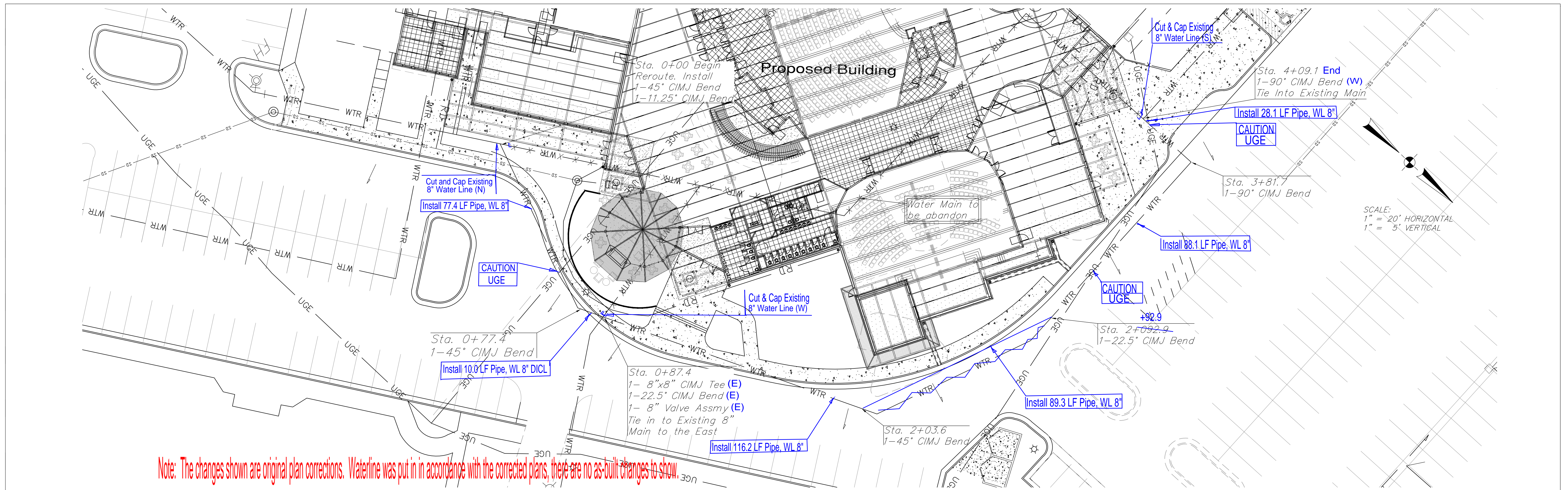


APPROVED AS NOTED
BY CITY ENGINEER OF WICHITA

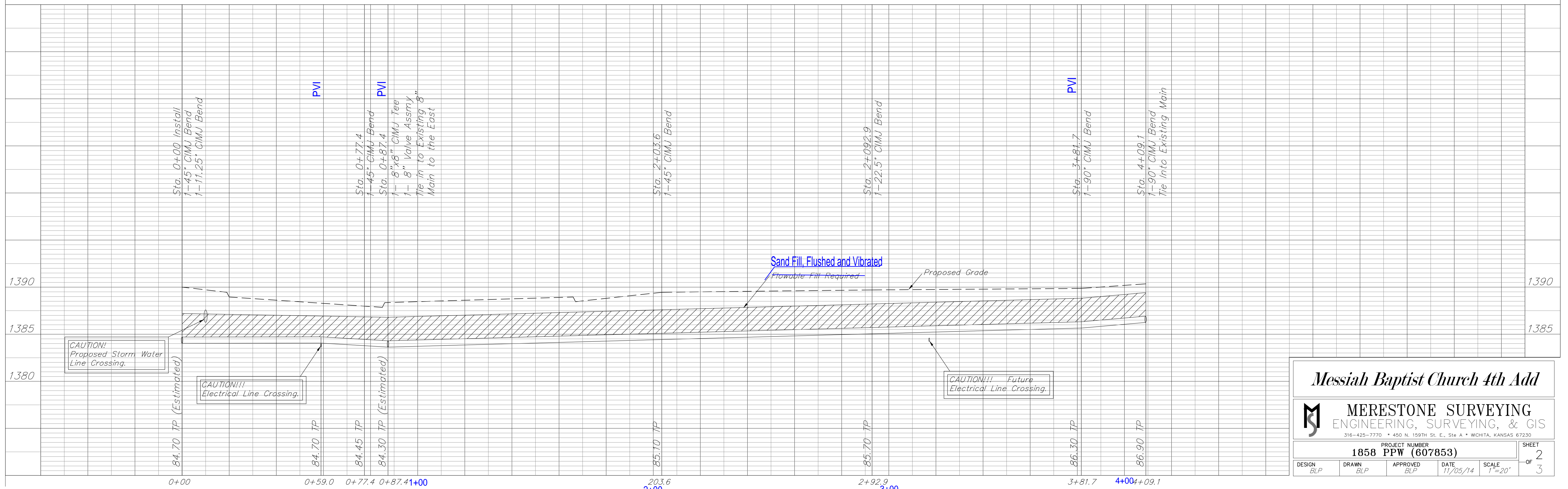
Engineering *Rebecca Duil* 11/2/14
 Utilities *Greg Kelly* 11/2-14
 Fire Department *DW* 11-13-14

NOTE TO CONTRACTORS
 Installation, Inspection and Testing for this project is to be provided by a Licensed Consulting Engineering Firm under contract with the Owner/Developer. Said inspection to be in accordance with the City of Wichita Standard Construction Engineering Practices and certified by a Licensed Professional Engineer. No work shall be performed in dedicated easements or public right-of-way by the Contractor without such inspection nor shall any work be commenced without written authorization by the City Engineer. All Construction and Materials shall comply with the City of Wichita Specifications and Standards (on file and available in the City Engineer's Office).





Note: The changes shown are original plan corrections. Waterline was put in in accordance with the corrected plans, there are no as-built changes to show.



Messiah Baptist Church 4th Add

MERESTONE SURVEYING
ENGINEERING, SURVEYING, & GIS
316-425-7770 • 450 N. 159TH St. E., Ste A • WICHITA, KANSAS 67230

PROJECT NUMBER 1858 PPW (607853)					SHEET 2
DESIGN BLP	DRAWN BLP	APPROVED BLP	DATE 11/05/14	SCALE 1"=20'	OF 3

