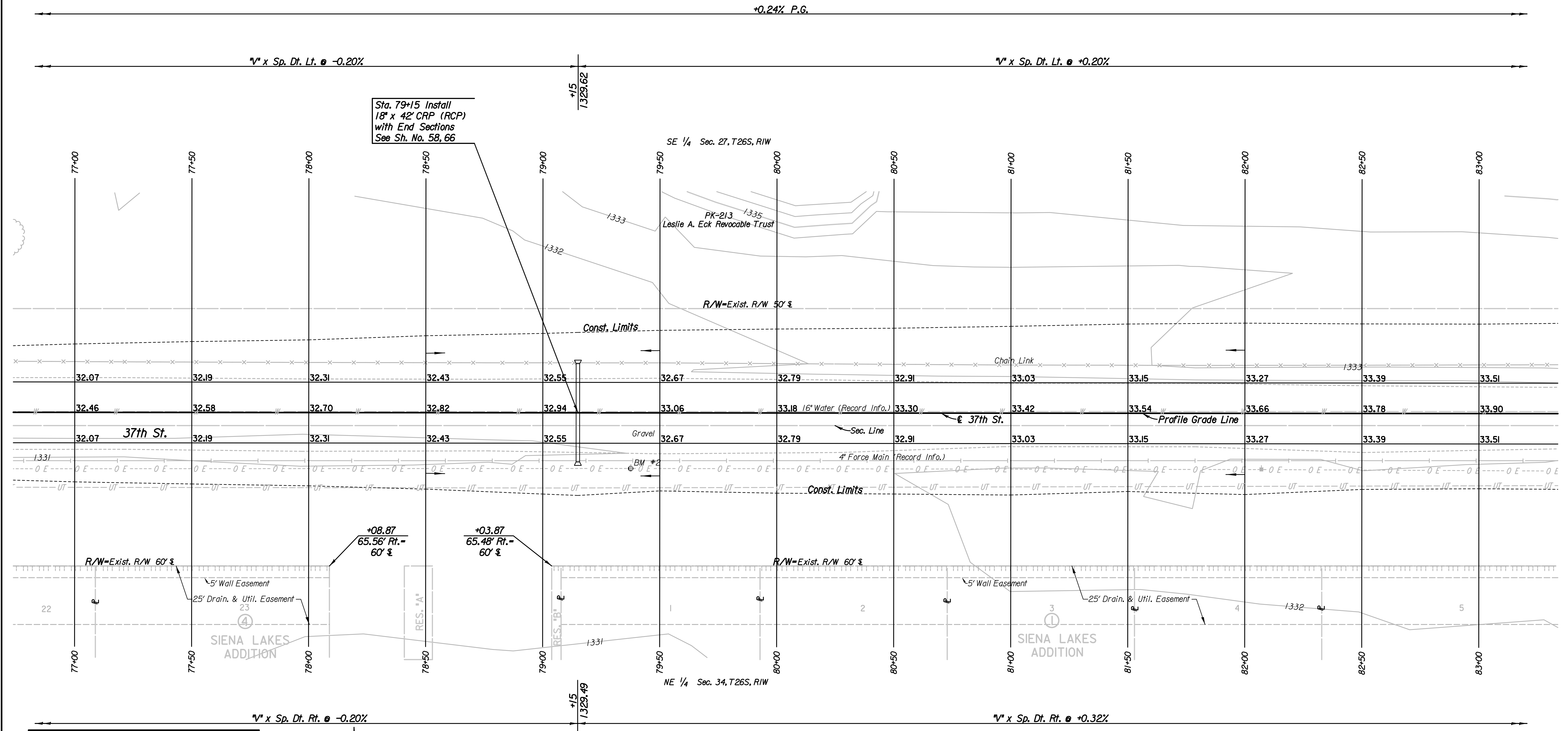


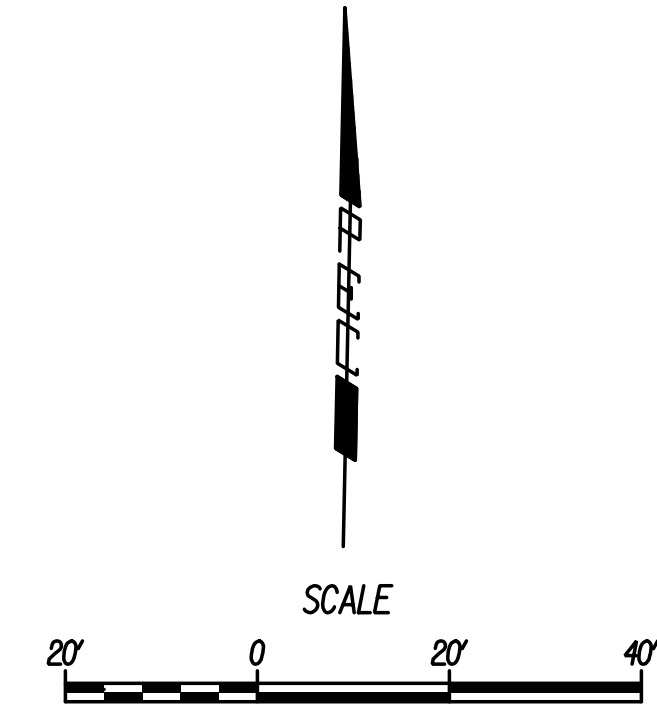
Plotted By: drp Date: 1/15/2015 9:12:34 AM
 FILE: I:\2008\08807\001\Plan\08807-001\Plan Sta 77 37th St.dgn



Sta. 79+15 Install
 18" x 42" CRP (RCP)
 with End Sections
 See Sh. No. 58, 66

REMOVAL OF EXISTING STRUCTURES *		
STATION	SIDE	ITEM
77+00	Lt.	600 LF Chain Link Fence (E)

* For Information Only



BM #2 Railroad spike in the North face of the 6th power pole West of Hoover Rd., 2066' West & 18' South of 37th St. and Hoover Rd.
 24' Rt. @ Sta. 79+38 Elev. = 1332.89 (NAVD88)

- Utilities**
- Power: Westar Energy
 - Sanitary Sewer: Wichita Water Utilities
 - Telephone: AT&T, Wichita Central Unit
 - Water: Wichita Water Utilities

No.	Revision	By	Date
37TH STREET			
PLAN			
STA. 77+00 TO STA. 83+00			
GARY JANZEN, P.E.-CITY ENGINEER CITY OF WICHITA PROJECT NO. 472-84780			
PEC PROFESSIONAL ENGINEERING CONSULTANTS, P.A. 303 SOUTH TOPEKA WICHITA, KS 67202 316-262-2691 www.pec1.com			
Designed by	JPS	Job No.	08807-001
Drawn by	SVB	Date	Jan., 2015
			Sh. 10 of 227