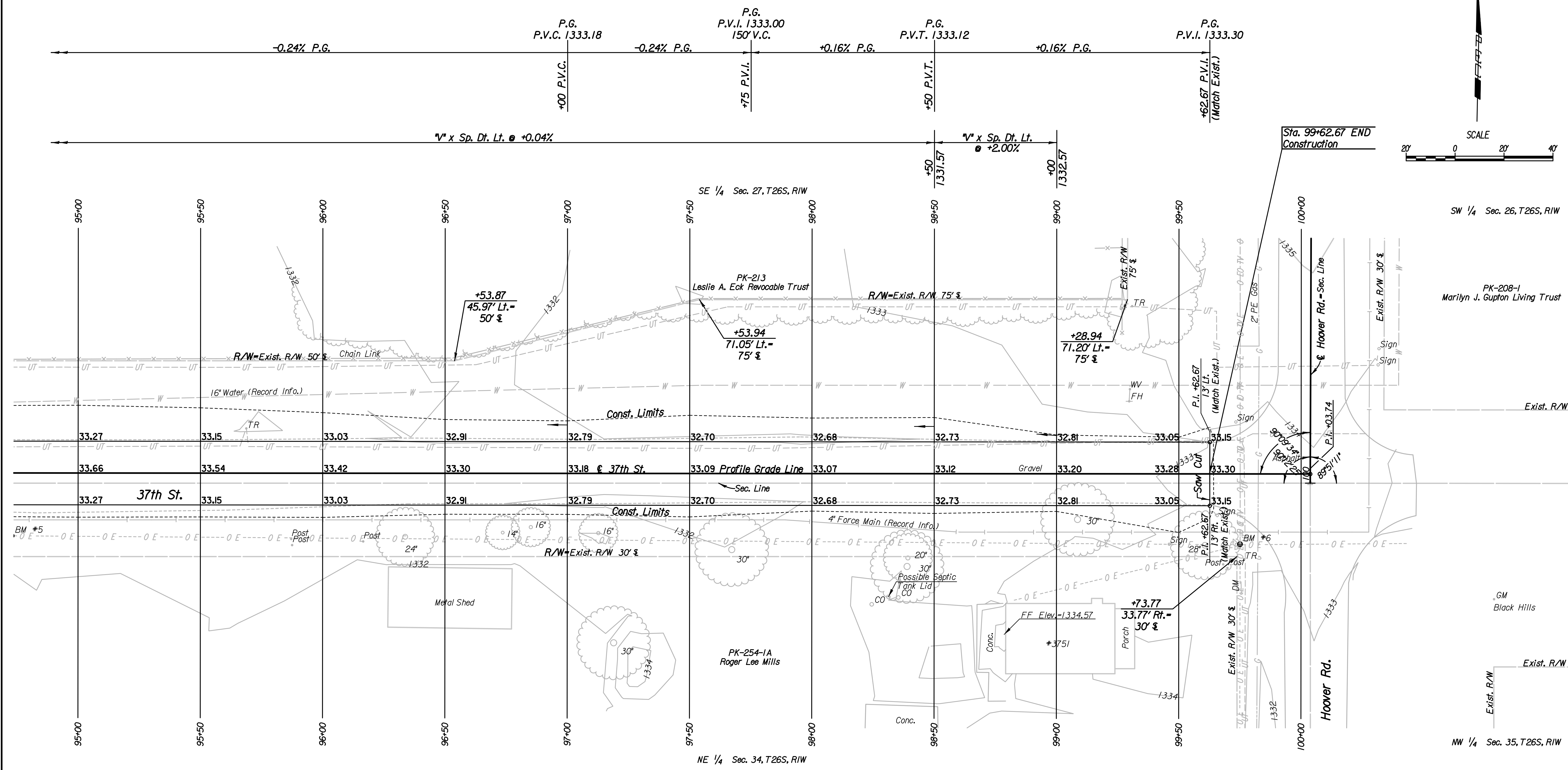
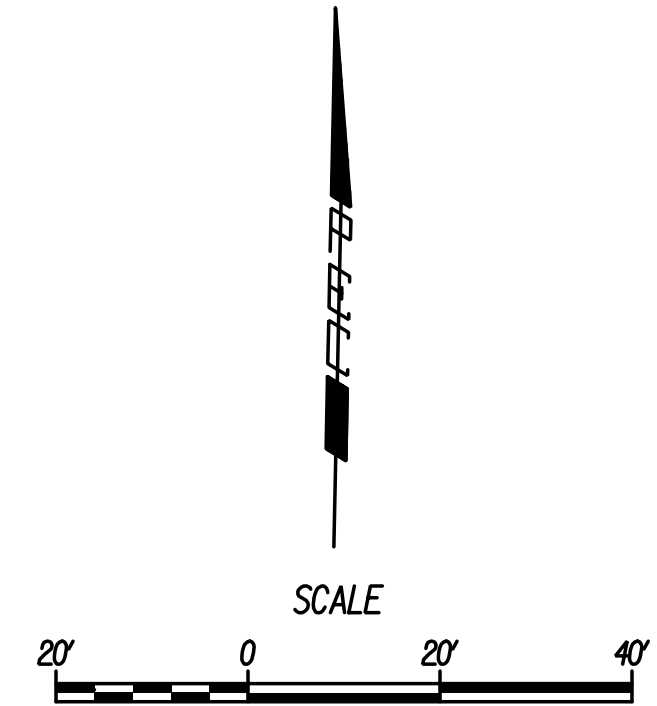


P.I. & Sta. 100+03.74
 Hoover Rd. & Sta. 100+03.74
 I. Not Set



Plotted By: drp Date: 1/15/2015 9:15:19 AM
 FILE: I:\2008\08807\001\Plan\08807-001\Plan Sta 95 37th St.dgn

- Utilities**
- Gas Kansas Gas Service
 - Power Westar Energy
 - Sanitary Sewer Wichita Water Utilities
 - Telephone AT&T, Wichita Central Unit
 - Television Cox Communications
 - Water Wichita Water Utilities

- SE Corner Sec. 27, T26S, RIW
 3.74' Rt. & 37th St. Sta. 100+03.73
 Found 3/8" Rebar with Cap
1. Railroad spike in high line pole 37.40' SW
 2. North face of house on West side of Hoover Rd. 48.00' S
 3. Metal plus in concrete 48.45' SW
 4. Center top of fire hydrant 81.30' WNW

BM #6 Railroad spike in the NE face of the 1st power pole West of Hoover Rd., 29' West & 25' South of 37th St. and Hoover Rd. 29' Rt. & Sta. 99+75 Elev. = -1334.55 (NAVD88)

No.	Revision	By	Date
37TH STREET PLAN STA. 95+00 TO STA. 100+03.74 GARY JANZEN, P.E.-CITY ENGINEER CITY OF WICHITA PROJECT NO. 472-84780			
PROFESSIONAL ENGINEERING CONSULTANTS, P.A. 303 SOUTH TOPEKA WICHITA, KS 67202 316-262-2691 www.pec1.com			
Designed by	JPS	Job No.	08807-001
Drawn by	SVB	Date	Jan., 2015
			Sht. 13 of 227