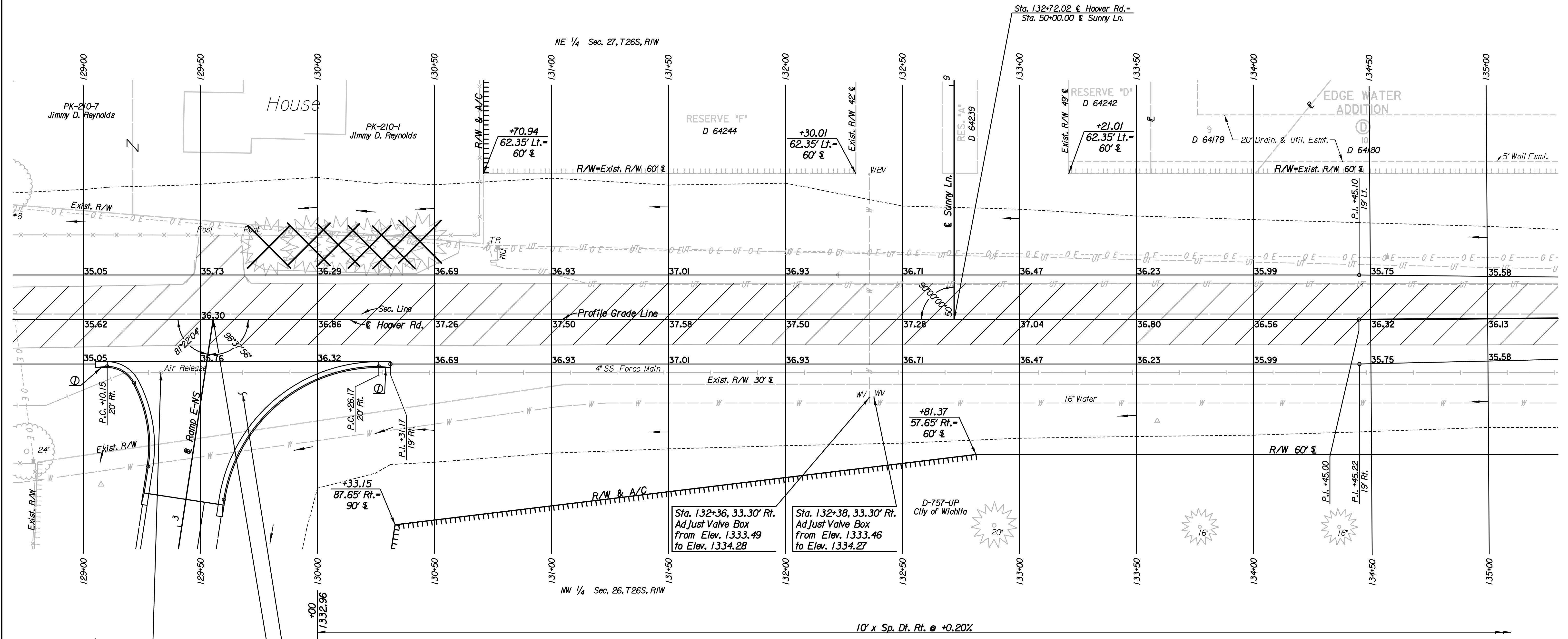
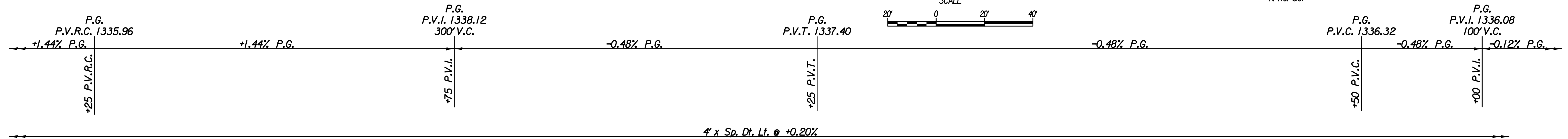
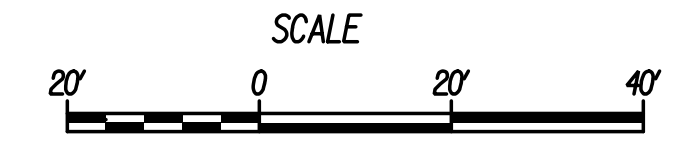


P.I. @ Sta. 134+45.00
Deflection $\Delta = 0^{\circ}22'26''$ Lt.
I. Not Set



Plotted By: drp Date: 1/19/2015 8:50:19 AM
FILE: I:\2008\08807\001\Plan\08807-001\Plan Sta 129 Hoover.dgn

Note: Elevations shown along Curb and Gutter are to High Edge and Top of Curb.

Sta. 129+33, 22.65' Rt. Adjust San. Sewer AR M.H. from Elev. 1333.76 to Elev. 1335.40

See Sh. No. 43 for Intersection Details
Sta. 129+55.42 @ Hoover Rd. Sta. 812+10.52 @ Ramp E-NS

REMOVAL OF EXISTING STRUCTURES *		
STATION	SIDE	ITEM
129+00	Lt.	169 LF Chain Link Fence (N)
129+32	Rt.	94 LF Chain Link Fence (N)
130+69	Lt.	26 LF Chain Link Fence (W)

* For Information Only

LEGEND

Pavement Removal

⊙ 5' Transition from Combined Curb & Gutter (Type 1) to No Curb.

✕ Denotes trees to be removed Paid for as 'Site Clearing'.

- Utilities
- Power Westar Energy
 - Sanitary Sewer Wichita Water Utilities
 - Telephone AT&T, Wichita Central Unit
 - Water Wichita Water Utilities

No.		Revision		By		Date	
<p>HOOPER ROAD</p> <p>PLAN</p> <p>STA. 129+00 TO STA. 135+00</p> <p>GARY JANZEN, P.E.-CITY ENGINEER</p> <p>CITY OF WICHITA PROJECT NO. 472-84780</p>							
<p>PROFESSIONAL ENGINEERING CONSULTANTS, P.A.</p> <p>303 SOUTH TOPEKA WICHITA, KS 67202</p> <p>316-262-2691 www.pec1.com</p>							
Designed by	JPS	Job No.	08807-001	Sheet	17 of 227		
Drawn by	SVB	Date	Jan., 2015				