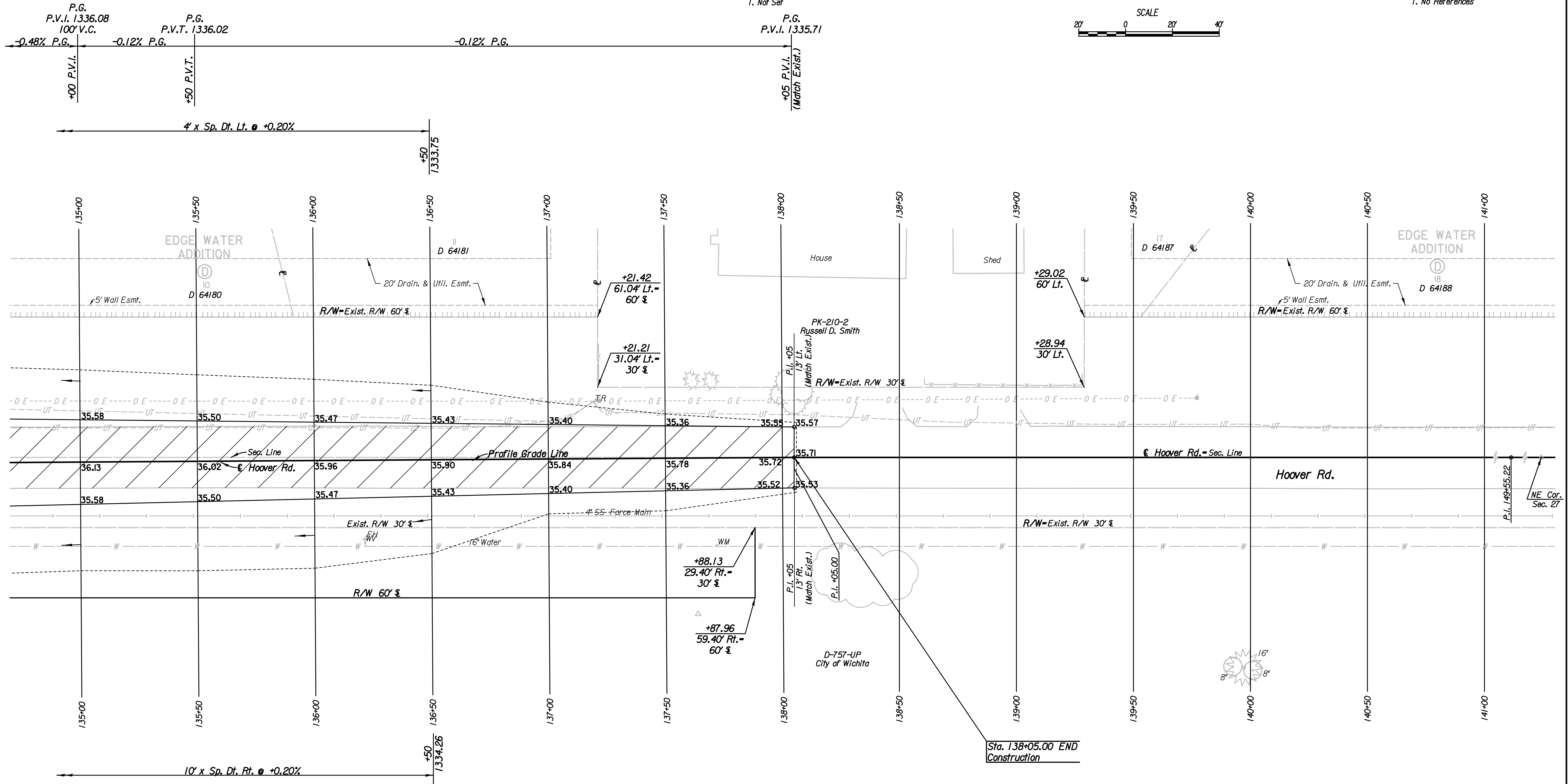
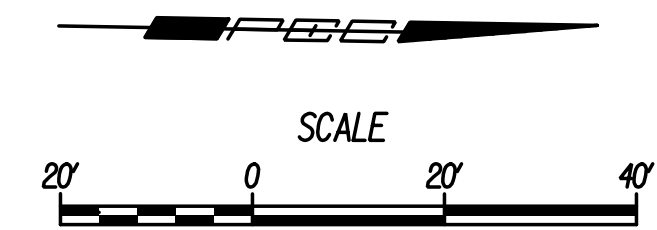


P.I. & Sta. 138+05.00
Deflection $\Delta=0^{\circ}22'26''$ Rt.
I. Not Set

P.I. & Sta. 149+55.22
Found $\frac{5}{8}$ " Rebar with Cap
I. No References



Plotted By: drp Date: 1/15/2015 10:11:54 AM
FILE: I:\2008\08807\001\Plan\08807-001\Plan Sta 135 Hoover.dgn

LEGEND

Pavement Removal

Power
Sanitary Sewer
Telephone
Water

Utilities
Westar Energy
Wichita Water Utilities
AT&T, Wichita Central Unit
Wichita Water Utilities

- NE Corner Sec. 27, T26S, R1W
Found $\frac{5}{8}$ " Capped Rebar
1. Curled 60d nail in West face of a 20" hedge tree 31.20' E
 2. Looped 60d nail in West face of a 16" hedge tree 50.50' SE
 3. 3 nails in South face of a high voltage pole 57.50' W
 4. Capped Mid Kansas bar 30.00' E
 5. $\frac{1}{2}$ " 45th St. North 285.00' \pm N

No.	Revision	By	Date
HOOPER ROAD			
PLAN			
STA. 135+00 TO STA. 141+00			
GARY JANZEN, P.E.-CITY ENGINEER CITY OF WICHITA PROJECT NO. 472-84780			
PEC PROFESSIONAL ENGINEERING CONSULTANTS, P.A. 303 SOUTH TOPEKA WICHITA, KS 67202 316-262-2691 www.pec1.com			
Designed by	JPS	Job No.	08807-001
Drawn by	SVB	Date	Jan., 2015
			Sheet 18 of 227