

P.T. @ K-96 Sta. 790+13.65
 3/4" Rebar
 I. No References

P.I. @ Ramp NS-E Sta. 811+21.39 @ Hoover Rd. Sta. 120+93.86
 I. Not Set

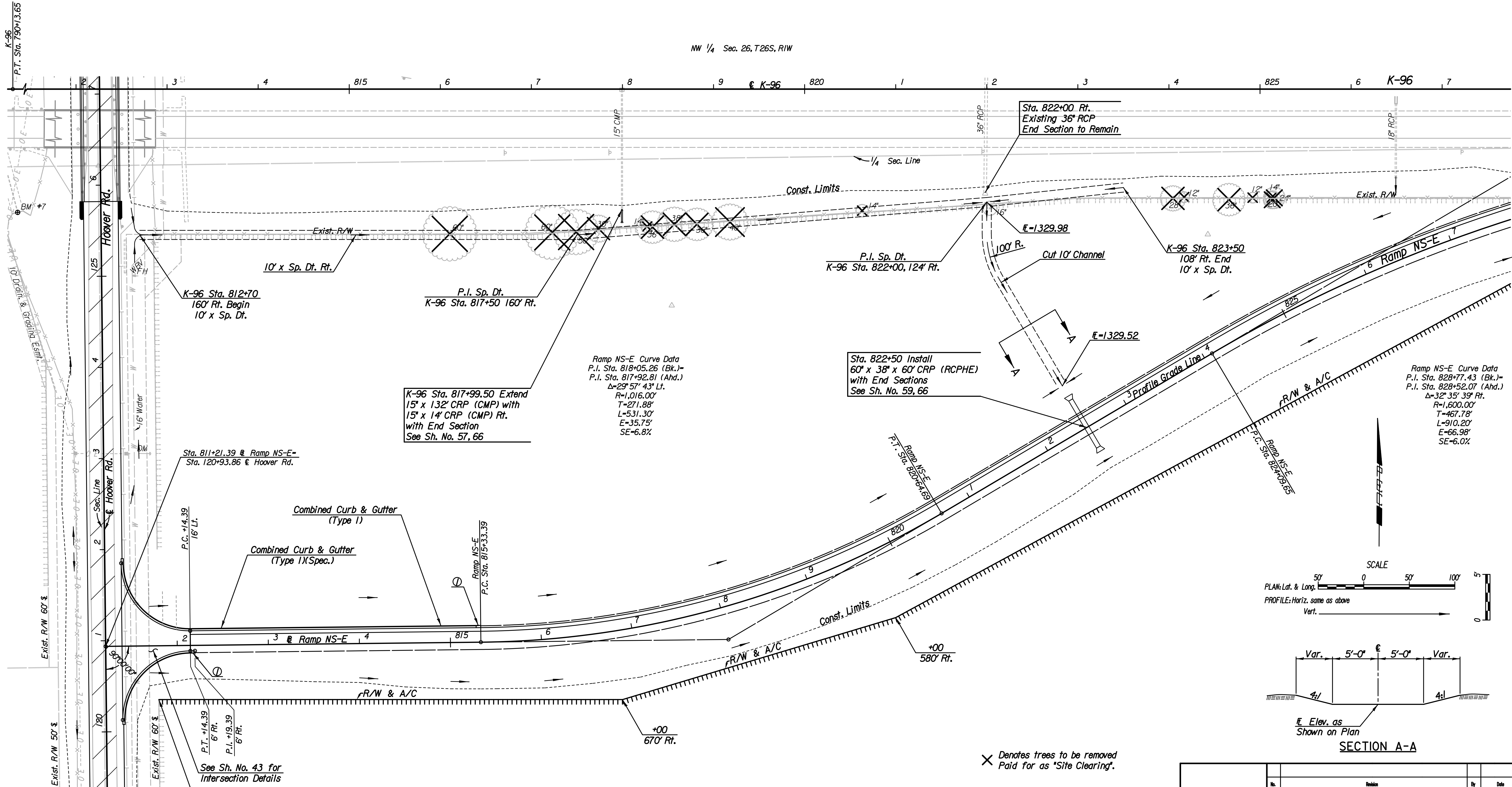
P.C. @ Ramp NS-E Sta. 815+33.39
 I. Not Set

P.I. @ Ramp NS-E Sta. 818+05.26 (Bk.)-
 P.I. @ Ramp NS-E Sta. 817+92.81 (Ahd.)
 I. Not Set

P.T. @ Ramp NS-E Sta. 820+64.69
 I. Not Set

P.C. @ Ramp NS-E Sta. 824+09.65
 I. Not Set

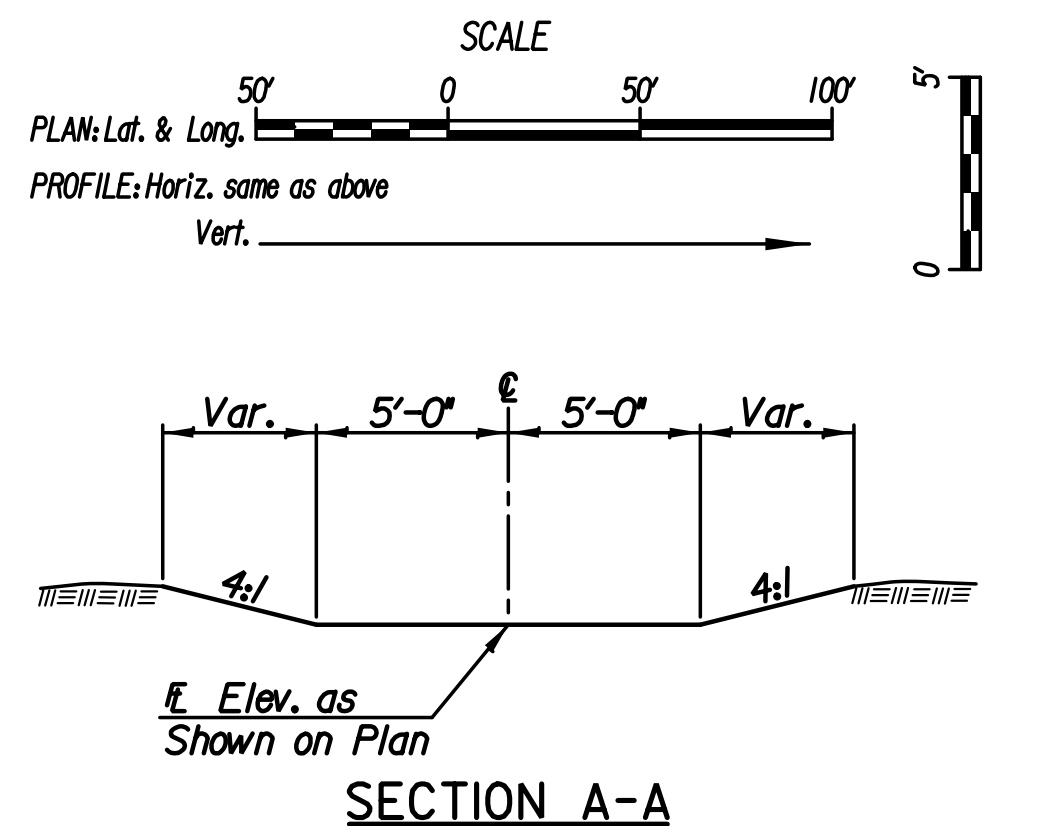
NW 1/4 Sec. 26, T26S, R1W



Ramp NS-E Curve Data
 P.I. Sta. 818+05.26 (Bk.)-
 P.I. Sta. 817+92.81 (Ahd.)
 $\Delta=29^{\circ}57'43''$ Lt.
 R=1,016.00'
 T=271.88'
 L=531.30'
 E=35.75'
 SE=6.8%

Sta. 822+50 Install
 60' x 38' x 60' CRP (RCPHE)
 with End Sections
 See Sh. No. 59, 66

Ramp NS-E Curve Data
 P.I. Sta. 828+77.43 (Bk.)-
 P.I. Sta. 828+52.07 (Ahd.)
 $\Delta=32^{\circ}35'39''$ Rt.
 R=1,600.00'
 T=467.78'
 L=910.20'
 E=66.98'
 SE=6.0%



REMOVAL OF EXISTING STRUCTURES *

STATION	SIDE	ITEM
811+81	Lt.	1414 LF Barbed Wire Fence (E)
818+00	Rt.	15' End Section (CMP)

* For Information Only

X Denotes trees to be removed
 Paid for as 'Site Clearing'.

LEGEND
 ① 5' Transition from Combined Curb & Gutter (Type 1) to no curb.

SW 1/4 Sec. 26, T26S, R1W

Utilities
 Power Westar Energy
 Sanitary Sewer Wichita Water Utilities
 Water Wichita Water Utilities

BM #7 Chiseled "M" at the center of and on top of the South headwall of a RCBC, 71' South of the extended South edge of the South bridge of K-96 Highway 135' Rt. @ K-96 Sta. 811+36 Elev. = 1334.87 (NAVD88)

Plotted By: drp Date: 1/19/2015 8:54:06 AM
 FILE: I:\2008\08807\001\Plan\08807-001\Plan Sta 811K96 and Ramp NS-E.dgn

No.	Revision	By	Date
K-96 RAMP NS-E			
PLAN			
STA. 811+21.39 TO STA. 827+00			
GARY JANZEN, P.E.-CITY ENGINEER CITY OF WICHITA PROJECT NO. 472-84780			
PEC PROFESSIONAL ENGINEERING CONSULTANTS, P.A. 303 SOUTH TOPEKA WICHITA, KS 67202 316-262-2691 www.pec1.com			
Designed by	JPS	Job No.	08807-001
Drawn by	SVB	Date	Jan., 2015
			Sh. 19 of 227