

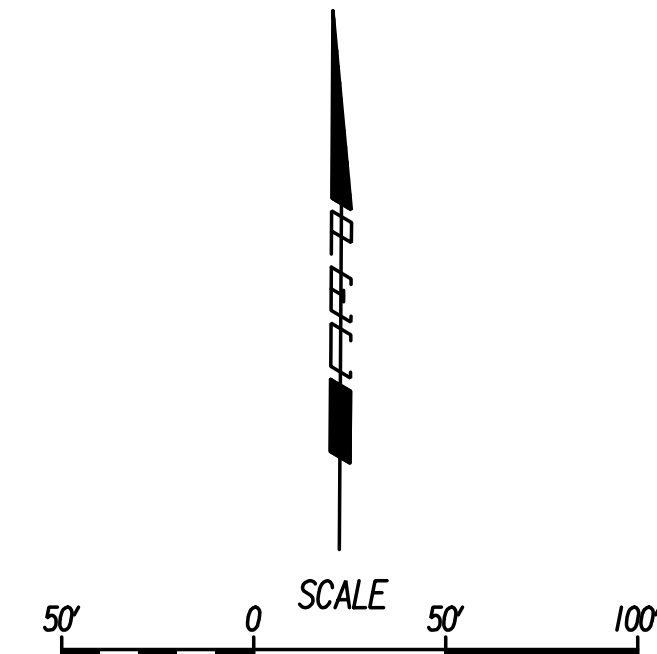
P.I. @ Ramp NS-E Sta. 828+77.43 (Bk.)-  
P.I. @ Ramp NS-E Sta. 828+52.07 (Ahd.)  
I. Not Set

T.S. @ K-96 Sta. 831+19.85  
I. Not Set

S.C. @ K-96 Sta. 833+19.85  
I. Not Set

P.I. @ K-96 Sta. 838+24.99 (Bk.)-  
P.I. @ K-96 Sta. 838+14.71 (Ahd.)  
I. Not Set

C.S. @ K-96 Sta. 843+19.85  
I. Not Set



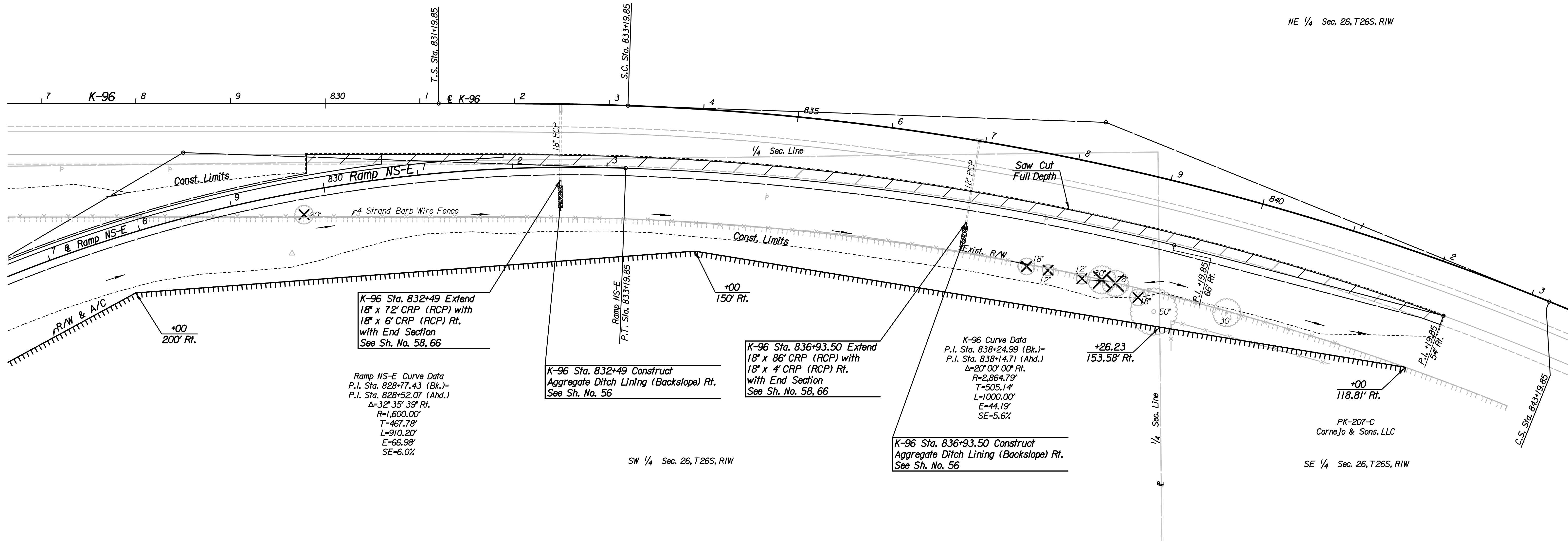
NW 1/4 Sec. 26, T26S, R1W

NE 1/4 Sec. 26, T26S, R1W

SW 1/4 Sec. 26, T26S, R1W

SE 1/4 Sec. 26, T26S, R1W

Plotted By: drp Date: 1/15/2015 10:29:54 AM  
FILE: I:\2008\08807\001\Plan\08807-001\Plan Sta 827 K96 and Ramp NS-E.dgn



K-96 Sta. 832+49 Extend  
18" x 72" CRP (RCP) with  
18" x 6" CRP (RCP) Rt.  
with End Section  
See Sh. No. 58, 66

Ramp NS-E Curve Data  
P.I. Sta. 828+77.43 (Bk.)-  
P.I. Sta. 828+52.07 (Ahd.)  
 $\Delta=32^{\circ} 35' 39''$  Rt.  
R=1,600.00'  
T=467.78'  
L=910.20'  
E=66.98'  
SE=6.0%

K-96 Sta. 832+49 Construct  
Aggregate Ditch Lining (Backslope) Rt.  
See Sh. No. 56

K-96 Sta. 836+93.50 Extend  
18" x 86" CRP (RCP) with  
18" x 4" CRP (RCP) Rt.  
with End Section  
See Sh. No. 58, 66

K-96 Curve Data  
P.I. Sta. 838+24.99 (Bk.)-  
P.I. Sta. 838+14.71 (Ahd.)  
 $\Delta=20^{\circ} 00' 00''$  Rt.  
R=2,864.79'  
T=505.14'  
L=1000.00'  
E=44.19'  
SE=5.6%

K-96 Sta. 836+93.50 Construct  
Aggregate Ditch Lining (Backslope) Rt.  
See Sh. No. 56

X Denotes trees to be removed  
Paid for as "Site Clearing".

**LEGEND**  
 Pavement Removal

| REMOVAL OF EXISTING STRUCTURES * |      |                               |
|----------------------------------|------|-------------------------------|
| STATION                          | SIDE | ITEM                          |
| 827+00                           | Lt.  | 1459 LF Barbed Wire Fence (E) |
| 832+49                           | Rt.  | 18" End Section (RCP)         |
| 836+94                           | Rt.  | 18" End Section (RCP)         |
| 839+36                           | Rt.  | 91 LF Barbed Wire Fence (E)   |

\* For Information Only

|  |          |         |                |
|--|----------|---------|----------------|
| No.  | Revision | By      | Date           |
| K-96 RAMP NS-E   |          |         |                |
| <b>PLAN</b>  |          |         |                |
| <b>STA. 827+00 TO STA. 842+19.85</b>   |          |         |                |
| GARY JANZEN, P.E.-CITY ENGINEER<br>CITY OF WICHITA PROJECT NO. 472-84780   |          |         |                |
| <b>PEC</b> PROFESSIONAL ENGINEERING CONSULTANTS, P.A.<br>303 SOUTH TOPEKA WICHITA, KS 67202<br>316-262-2691 www.pec1.com |          |         |                |
| Designed by  | JPS      | Job No. | 08807-001      |
| Drawn by   | SVB      | Date    | Jan., 2015     |
|  |          |         | Sht. 21 of 227 |