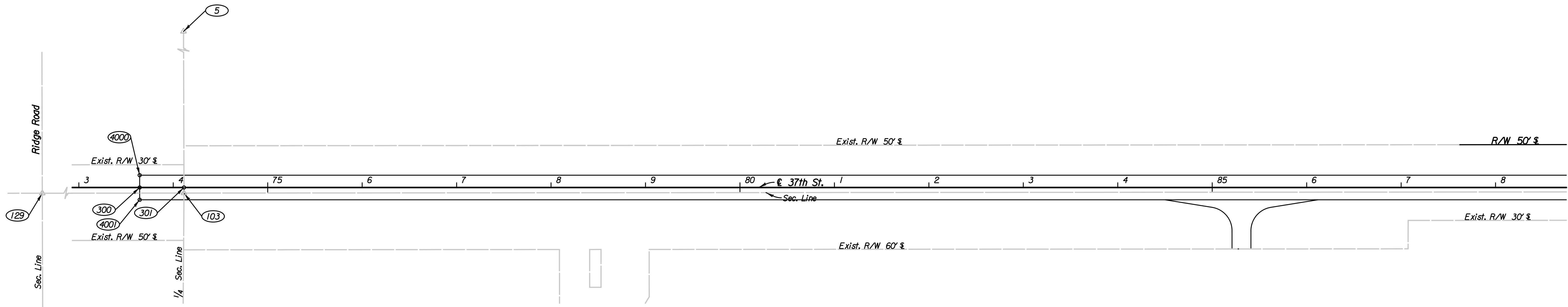
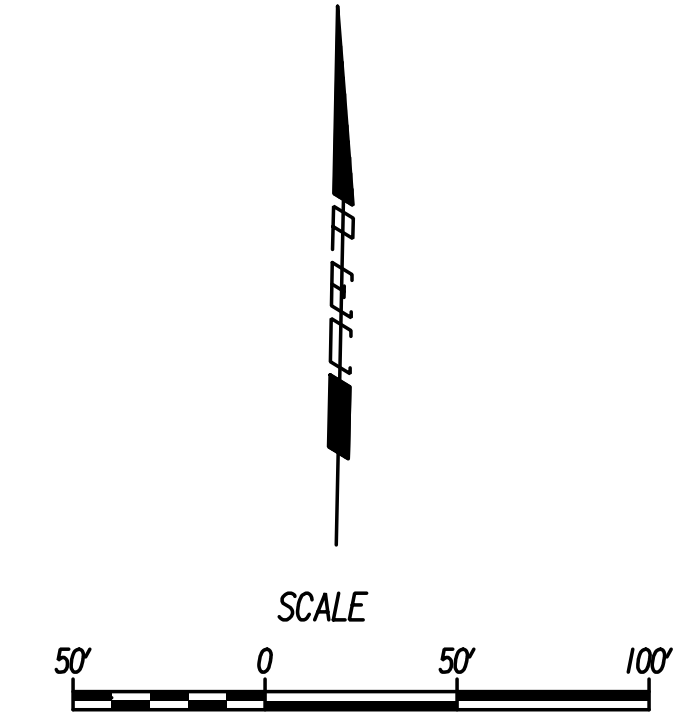


COORDINATE TABLE					
POINT NO.	NORTH COORDINATE	EAST COORDINATE	STATION	OFFSET	DESCRIPTION
4000	1,709,653.0175	1,625,535.7872	73+64.44	13.00 Lt.	Edge of Pvmnt / Match Point
4001	1,709,627.0229	1,625,536.3172	73+64.44	13.00 Rt.	Edge of Pvmnt / Match Point

CONTROL POINTS					
POINT NO.	NORTH COORDINATE	EAST COORDINATE	STATION	OFFSET	DESCRIPTION
5	1,712,261.4458	1,625,521.4773	74+03.30	2,621.18 Lt.	Ctr. Cor. Sec. 27 - Conc. Nail in ctr of 0.5 x 1.0 limestone
103	1,709,635.0876	1,625,583.1010	74+11.37	5.89 Rt.	S 1/4 Cor. Sec. 27 - 1/2" Rebar
129	1,709,578.6539	1,622,951.5904			SW Cor. Sec. 27 - Mag Nail
300	1,709,640.0202	1,625,536.0522	73+64.44	0.00 Lt.	℄ of 37th St. - Begin
301	1,709,640.9766	1,625,582.9628	74+11.36	0.00 Lt.	P.O.T. ℄ of 37th St.



Plotted By: drp Date: 1/15/2015 10:47:23 AM
 FILE: I:\2008\08807\001\C060\08807-001\C060 Sta 73 37th St.dgn

No.	Revision	By	Date
37TH STREET			
COORDINATE GEOMETRY PLAN			
STA. 73+00 TO STA. 88+00			
GARY JANZEN, P.E.-CITY ENGINEER CITY OF WICHITA PROJECT NO. 472-84780			
		PROFESSIONAL ENGINEERING CONSULTANTS, P.A. 303 SOUTH TOPEKA WICHITA, KS 67202 316-262-2691 www.pec1.com	
Designed by	JPS	Job No.	08807-001
Drawn by	SVB	Date	Jan., 2015
			Sht. 28 of 227