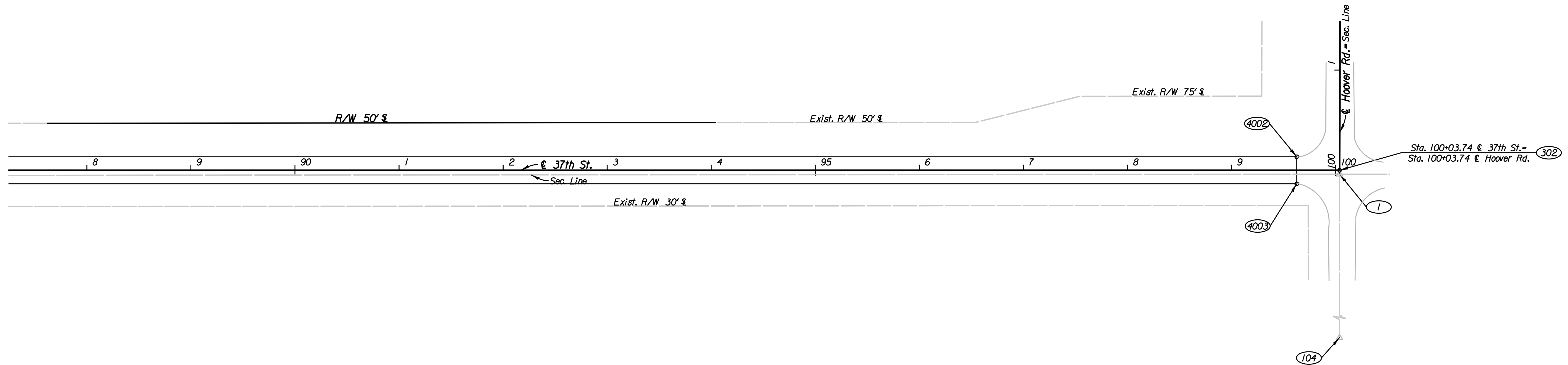
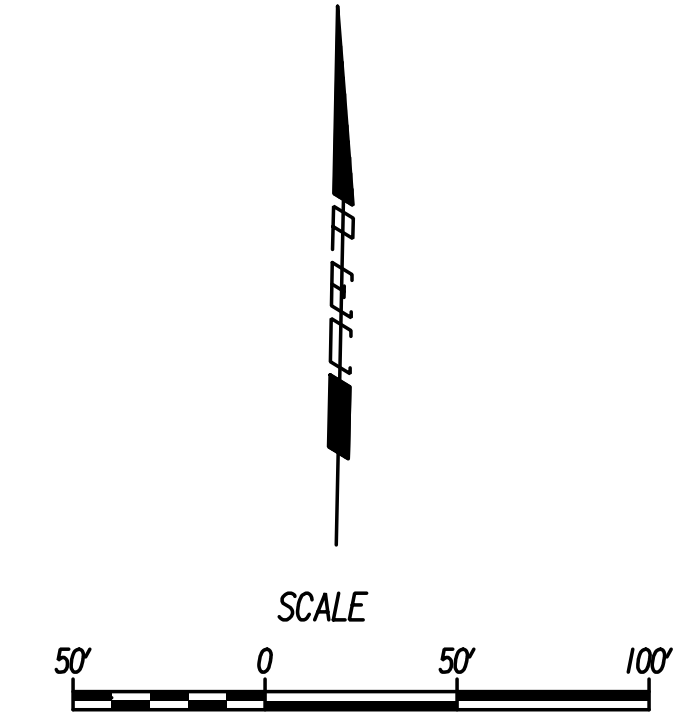


COORDINATE TABLE					
POINT NO.	NORTH COORDINATE	EAST COORDINATE	STATION	OFFSET	DESCRIPTION
4002	1,709,705.9780	1,628,133.4776	99+62.67	13.00 Lt.	Edge of Pmnt / Match Point
4003	1,709,679.9834	1,628,134.0076	99+62.67	13.00 Rt.	Edge of Pmnt / Match Point

CONTROL POINTS					
POINT NO.	NORTH COORDINATE	EAST COORDINATE	STATION	OFFSET	DESCRIPTION
1	1,709,690.0766	1,628,174.8758	100+03.73	3.74 Rt.	SE Cor. Sec. 27 - 5/8" Capped Rebar
104	1,707,051.4176	1,628,232.3540			E 1/4 Cor. Sec. 34 - 1/2" Rebar
302	1,709,693.8179	1,628,174.8099	100+03.74	0.00 Lt.	€ Intersection of 37th St. & Hoover Rd.



Plotted By: drp Date: 1/15/2015 10:48:36 AM
 FILE: I:\2008\08807\001\C060\08807-001\C060 Sta 88 37th St.dgn

No.	Revision	By	Date
37TH STREET			
COORDINATE GEOMETRY PLAN			
STA. 88+00 TO STA. 100+00			
GARY JANZEN, P.E.-CITY ENGINEER CITY OF WICHITA PROJECT NO. 472-84780			
		PROFESSIONAL ENGINEERING CONSULTANTS, P.A. 303 SOUTH TOPEKA WICHITA, KS 67202 316-262-2691 www.pec1.com	
Designed by	JPS	Job No.	08807-001
Drawn by	SVB	Date	Jan., 2015
			Sht. 29 of 227