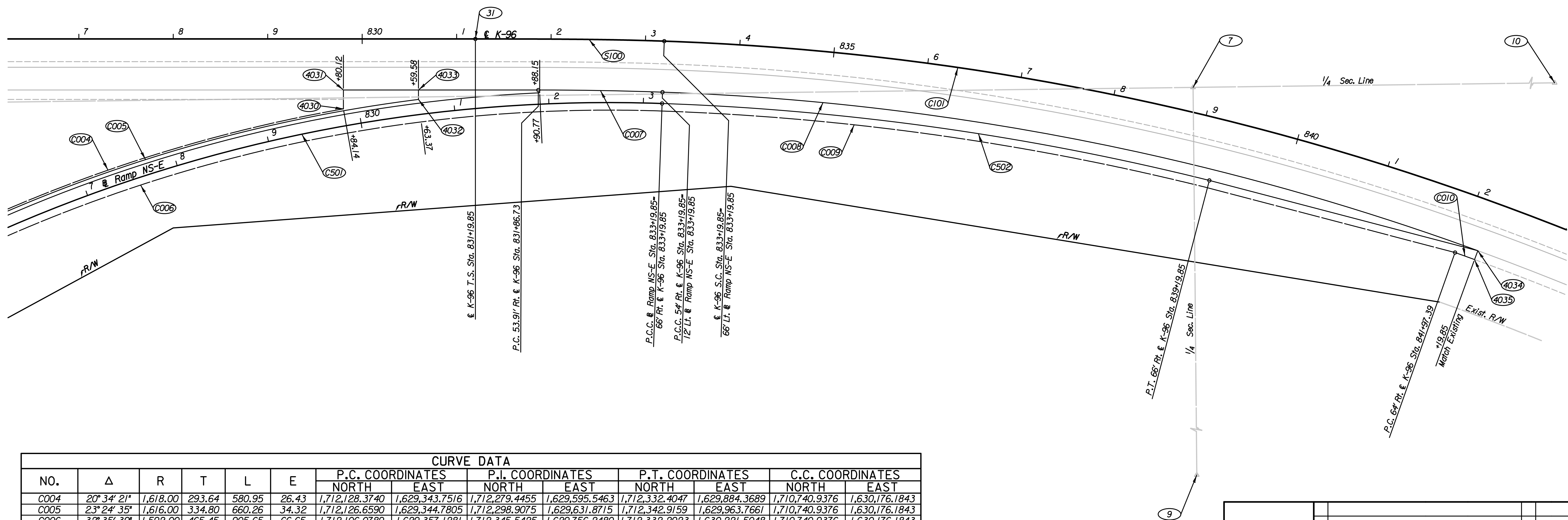
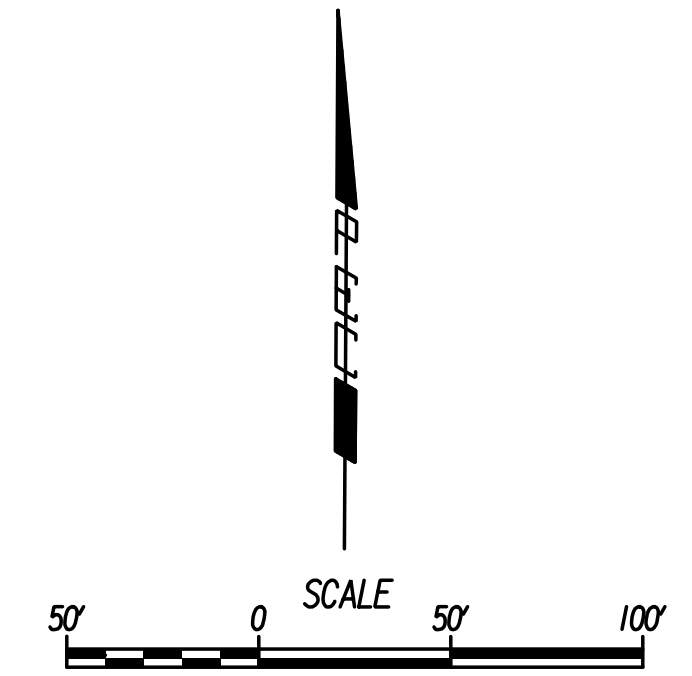


COORDINATE TABLE					
POINT NO.	NORTH COORDINATE	EAST COORDINATE	STATION	OFFSET	DESCRIPTION
4030	1,712,342.4045	1,629,884.3045	829+80.12	64.00 Rt.	Edge of Shldr / Match Point
4031	1,712,352.4043	1,629,884.2402	829+80.12	54.00 Rt.	Edge of Pmnt / Match Point
4032	1,712,342.9159	1,629,963.7661	830+63.37	16.00 Lt.	Edge of Shldr / Gore
4033	1,712,352.9157	1,629,963.7018	830+59.58	54.00 Rt.	Edge of Pmnt / Gore
4034	1,712,190.0437	1,631,086.3874	842+19.85	54.00 Rt.	Edge of Pmnt / Match Point
4035	1,712,180.6250	1,631,083.0277	842+19.85	64.00 Rt.	Edge of Shldr / Match Point

CONTROL POINTS					
POINT NO.	NORTH COORDINATE	EAST COORDINATE	STATION	OFFSET	DESCRIPTION
7	1,712,360.9048	1,630,783.8214	838+79.71	25.63 Lt.	Ctr. Cor. Sec. 26 - 1/2" Iron Pipe
9	1,709,743.4989	1,630,823.7390			S 1/4 Cor. Sec. 26 - 3/4" Iron Pipe
10	1,712,411.3551	1,633,436.3699			E 1/4 Cor. Sec. 26 - 3/4" Rebar
31	1,712,407.3024	1,630,023.6249	831+19.85	0.00 Lt.	€ of K-96 - 3/4" Rebar



NO.	Δ	R	T	L	E	P.C. COORDINATES		P.I. COORDINATES		P.T. COORDINATES		C.C. COORDINATES	
						NORTH	EAST	NORTH	EAST	NORTH	EAST	NORTH	EAST
						C004	20° 34' 21"	1,618.00	293.64	580.95	26.43	1,712,128.3740	1,629,343.7516
C005	23° 24' 35"	1,616.00	334.80	660.26	34.32	1,712,126.6590	1,629,344.7805	1,712,298.9075	1,629,631.8715	1,712,342.9159	1,629,963.7661	1,710,740.9376	1,630,176.1843
C006	32° 35' 39"	1,592.00	465.45	905.65	66.65	1,712,106.0789	1,629,357.1281	1,712,345.5425	1,629,756.2480	1,712,332.2923	1,630,221.5048	1,710,740.9376	1,630,176.1843
C007	02° 00' 00"	3,765.85	65.73	131.45	0.57	1,712,353.7325	630,090.6356	1,712,354.1555	1,630,156.3675	1,712,352.2842	1,630,222.0741	1,708,587.9564	1,630,114.8691
C008	18° 00' 00"	2,810.79	445.19	883.04	35.04	1,712,352.2842	1,630,222.0741	1,712,339.6109	1,630,667.0789	1,712,190.0437	1,631,086.3874	1,709,542.6344	1,630,142.0576
C009	12° 00' 00"	2,790.79	293.32	584.50	15.37	1,712,332.2923	1,630,221.5048	1,712,323.9421	1,630,514.7096	1,712,254.8136	1,630,799.7711	1,709,542.6344	1,630,142.0576
C010	00° 26' 57"	2,800.79	10.98	21.96	0.02	1,712,187.9223	1,631,062.3135	1,712,184.3142	1,631,072.6849	1,712,180.6250	1,631,083.0277	1,709,542.6344	1,630,142.0576
C101	20° 00' 00"	2,864.79	505.14	1,000.00	44.19	1,712,406.2623	1,630,223.6114	1,712,391.8822	1,630,728.5462	1,712,205.6714	1,631,198.1115	1,709,542.6344	1,630,142.0576
C501	32° 35' 39"	1,600.00	467.78	910.20	66.98	1,712,112.9390	1,629,353.0122	1,712,353.6058	1,629,754.1377	1,712,340.2891	1,630,221.7325	1,710,740.9376	1,630,176.1843
C502	12° 00' 00"	2,798.79	294.16	586.18	15.42	1,712,340.2891	1,630,221.7325	1,712,331.9149	1,630,515.7779	1,712,262.5883	1,630,801.6565	1,709,542.6344	1,630,142.0576

Plotted By: drp Date: 1/15/2015 11:09:44 AM
 FILE: I:\2008\08807\001\COGO\08807-001\COGO Sta 827 K96 and Ramp NS-E.dgn

No.		Revision		By		Date	
K-96 RAMP NS-E COORDINATE GEOMETRY PLAN STA. 827+00 TO STA. 842+19.85 GARY JANZEN, P.E.-CITY ENGINEER CITY OF WICHITA PROJECT NO. 472-84780							
				PROFESSIONAL ENGINEERING CONSULTANTS, P.A. 303 SOUTH TOPEKA WICHITA, KS 67202 316-262-2691 www.pec1.com			
Designed by	JPS	Job No.	08807-001	Sht.	33	of 227	
Drawn by	SVB	Date	Jan., 2015				