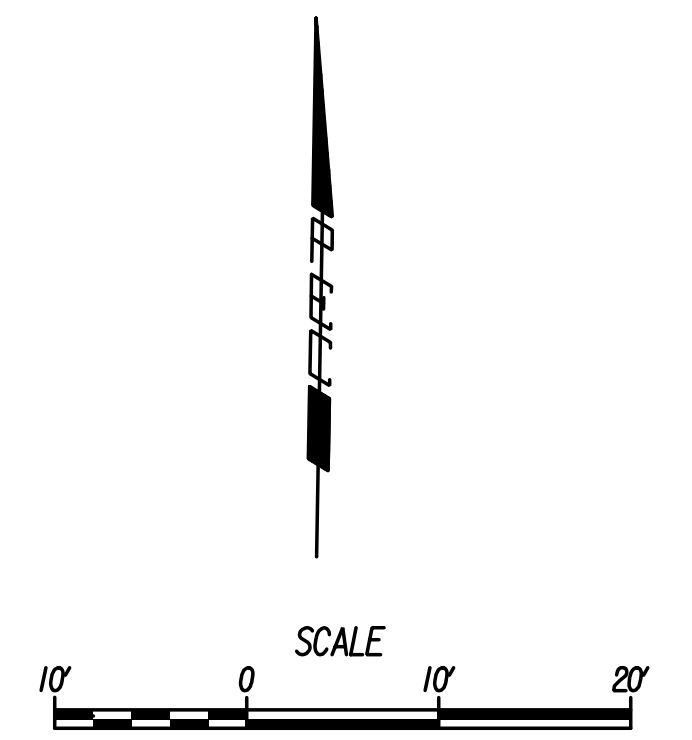
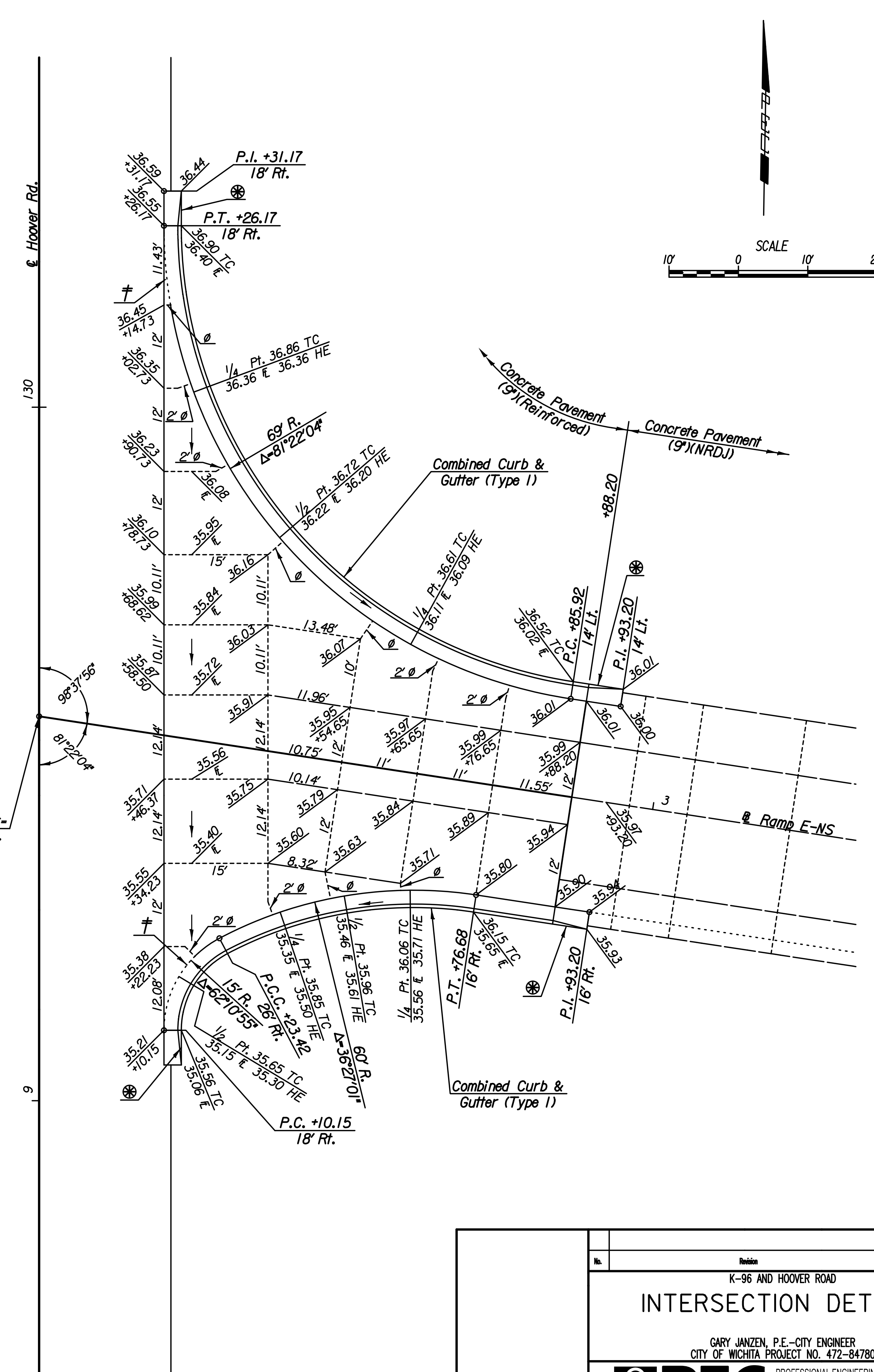



Sta. 812+10.52 @ Ramp E-NS=
 Sta. 129+55.42 @ Hoover Rd.

LEGEND

- Doweled Contraction Joint
- Longitudinal Joint
- Theoretical Edge of Pavement (No Joint)
- Expansion Joint
- ‡ Place Pavement Integral with Curb & Gutter
- Omit Dowel or Tie Bars
- ⊗ 5' Transition from Combined Curb & Gutter (Type 1) to no curb.



Revision		By	Date
K-96 AND HOOPER ROAD			
INTERSECTION DETAILS			
GARY JANZEN, P.E.-CITY ENGINEER CITY OF WICHITA PROJECT NO. 472-84780			
 PROFESSIONAL ENGINEERING CONSULTANTS, P.A. 303 SOUTH TOPEKA WICHITA, KS 67202 316-262-2691 www.pec1.com			
Designed by	JPS	Job No.	08807-001
Drawn by	SVB	Date	Jan., 2015
			Sht. 43 of 227