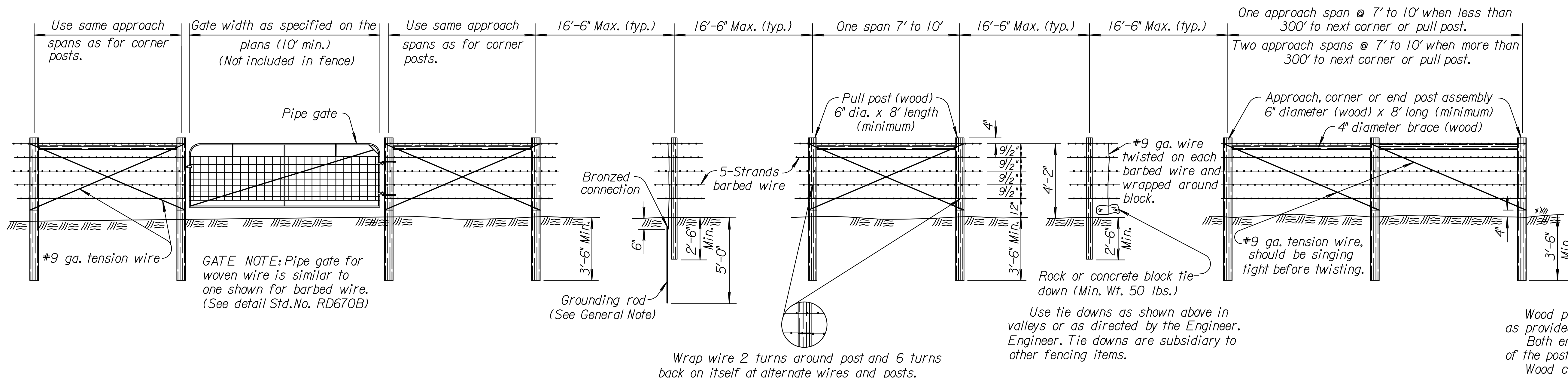
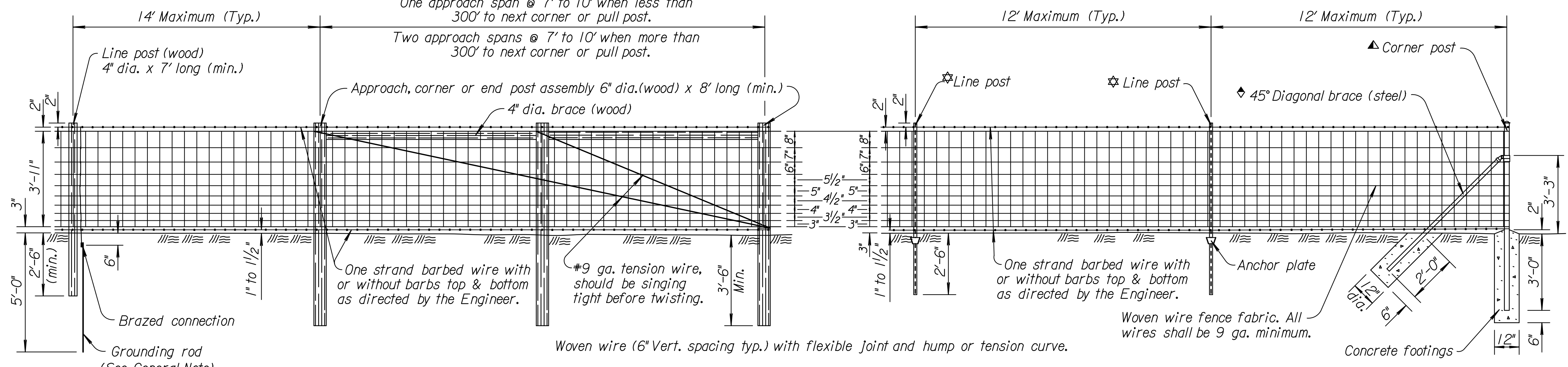


STATE	PROJECT NO.	YEAR	SHEET NO.	TOTAL SHEETS
KANSAS	472-84780	2015	63	227



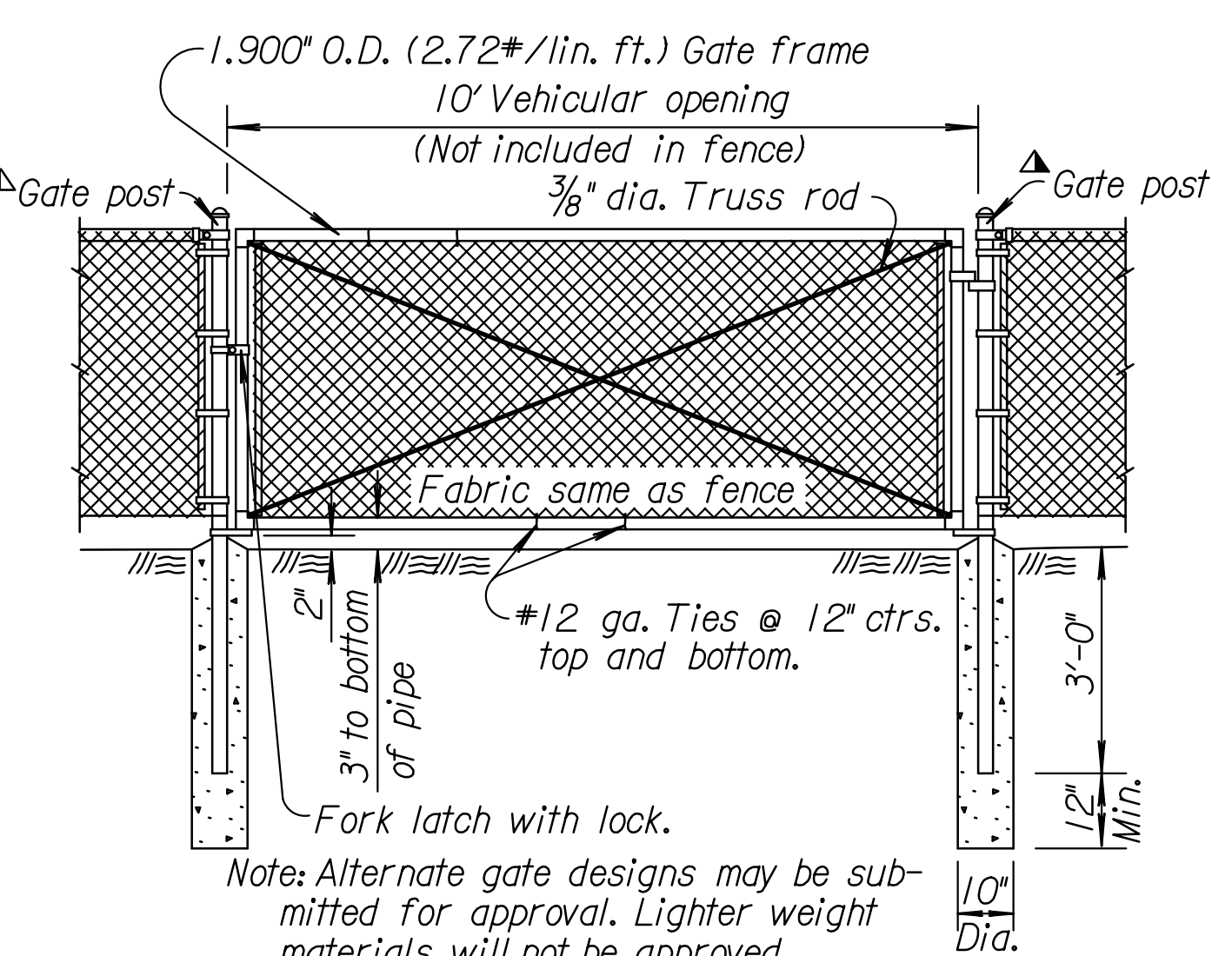
BARBED WIRE FENCE



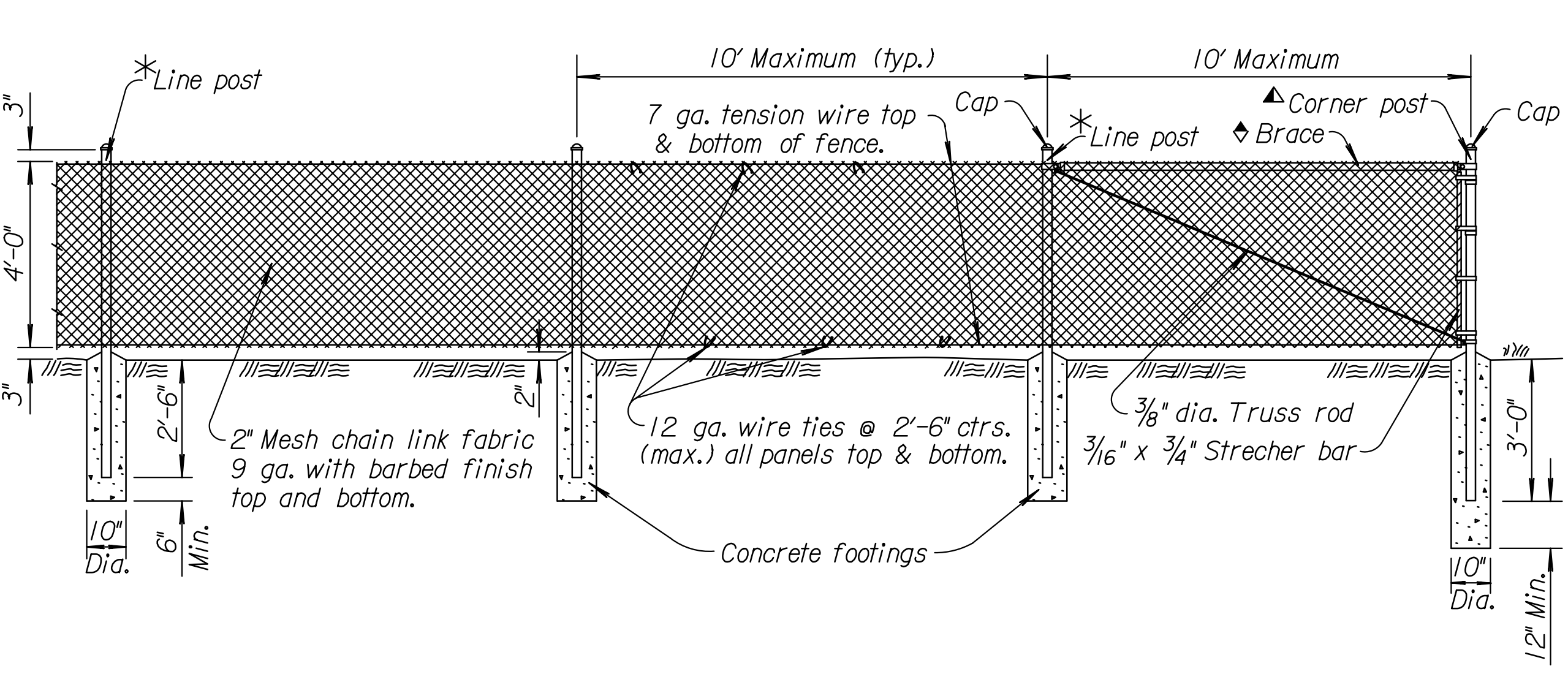
WOVEN WIRE TYPE A FENCE

WOVEN WIRE TYPE B FENCE

Pull post assembly for woven wire with wood posts is similar to barbed wire pull post assembly detail.



DETAIL OF GATE, HINGE & SPECIFICATIONS



CHAIN LINK FENCE

- (STEEL)
- ★ Steel line post 7'-0" length
Studded T (1.33#/lin. ft.)
U (1.33#/lin. ft.)
H (2.27#/lin. ft.)
 - ◆ Brace
1.660" O.D., 0.111" Th. (1.84#/lin. ft.) pipe (Group 1C) or
1.660" O.D., 0.140" Th. (2.27#/lin. ft.) pipe (Group 1A) or
1 5/8" x 1 1/4" Brace rail (See Alt. Details)
 - * Line post 7'-0" length.
2.375" O.D., 0.154" Th. (3.65#/lin. ft.) pipe (Group 1A) or
2.375" O.D., 0.130" Th. (3.12#/lin. ft.) pipe (Group 1C) or
1 5/8" x 1 1/8" C Post (2.28#/lin. ft.)
 - ▲ End, corner, gate, or pull post 7'-6" length.
(A120) 2.875" O.D., 0.203" Th. (5.79#/lin. ft.) pipe (Group 1A)
or 2.875" O.D., 0.160" Th. (4.64#/lin. ft.) pipe (Group 1C)

GENERAL NOTE

Wood posts and braces shall be given a preservative treatment as provided in the KDOT Standard Specifications.

Both ends of all wood posts shall be cut normal to the axis of the post. Pointed posts will not be permitted.

Wood corner, end, pull and approach posts shall be notched to support ends of wood braces. Wood braces shall be toenailed to the posts with 2-10d nails in each end of the brace.

When wood posts are used, both ends of all tension wires shall be wrapped around the posts twice and stapled in place.

When wood posts are used the fence shall be grounded by a 5/8" diameter galvanized or copper coated rod five feet long, driven vertically until the top is six inches below the ground surface. A #6 solid copper conductor shall be securely fastened to each element of the fence by use of clamps or other suitable device. Grounding rod shall be installed at intervals of 175' maximum.

In lieu of using the galvanized or copper coated rod as described above the contractor may, at his option, use a steel line post at intervals not to exceed each eighth post.

The galvanized or copper coated rod shall be used where power lines pass over the fence.

All steel posts, braces, fittings, and gate frames shall be galvanized and/or coated in accordance with the Standard Specifications.

Steel posts shall be provided with fasteners prevent slippage of the wire strands.

Outside diameters shown for tubular steel posts, bracing and gate frames are nominal. Weight tolerances shall be as shown in the KDOT Standard Specifications.

Posts may be set by driving or digging. If by digging, the posts shall be set in the center of the hole and the soil tamped securely on all sides.

Pull post assembly shall be used at sharp breaks in vertical grade or at approximately 330' centers (Woven & Chain link) or 1320' centers (Barbed wire) on straight runs or as directed by the Engineer.

Concrete used in fence installation shall conform to the requirements of the KDOT Standard Specifications.

Woven wire, chain link fabric, barbed wire and tension wire shall be either zinc coated (galvanized) or aluminum coated.

Minimum strength of barbed wire and tension wire shall be as provided in the KDOT Standard Specifications.

Use #9 gauge galvanized staples 1 1/2" to 1 3/4" long, or #9 gauge galvanized Ring-shank staples 1 1/2" to 1 3/4" long.

Alternate gate designs may be submitted for approval. Lighter weight materials will not be approved.

Padlocks for gates shall be furnished by the State.

No Wood Posts are allowed for new or reconstruction fence installations on the State Highway System. Shop drawings for steel gate post assembly designs are to be submitted to the State Road Office, Bureau of Design for approval prior to construction.

NO.	DATE	REVISIONS	BY	APP'D
9	11-30-09	Rev. post listing, wood po. restrict.	S.W.K.	J.O.B.
8	11-08-05	Revised brace dimension	S.W.K.	J.O.B.
7	11-02-04	Added assembly to end post label	S.W.K.	J.O.B.

KANSAS DEPARTMENT OF TRANSPORTATION

**HIGHWAY FENCE
BARBED, WOVEN, & CHAIN LINK**

RD670A

DESIGNED	12-16-09	APP'D.	James O. Brewer
DESIGN CK.	DETAIL CK.	QUANTITIES	TRACED
		QUAN. CK.	TRACE CK. King

Drawn By: drp
Plotted: 15-JAN-2015 13:48
File: I:\2008\08807\001\Standards\08807-001 rd670a.dgn