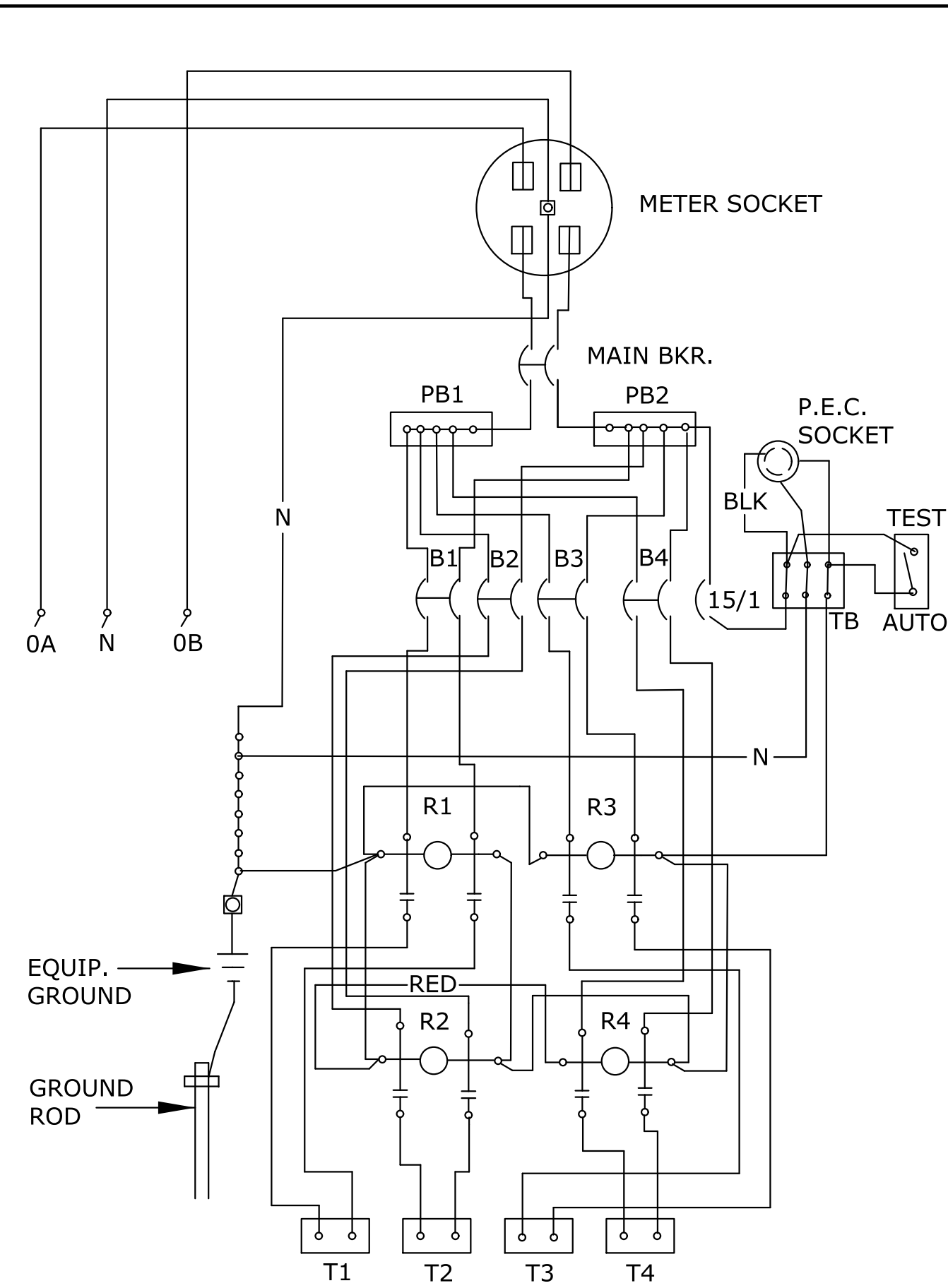
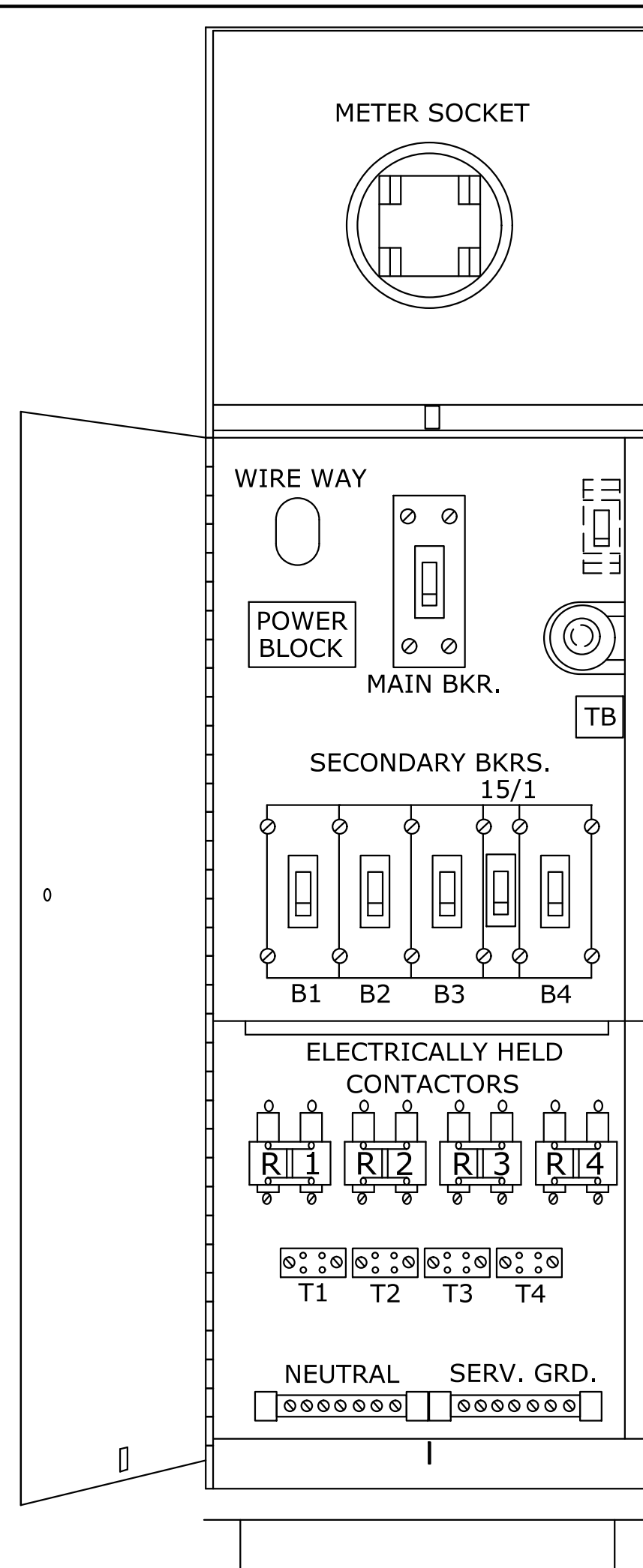


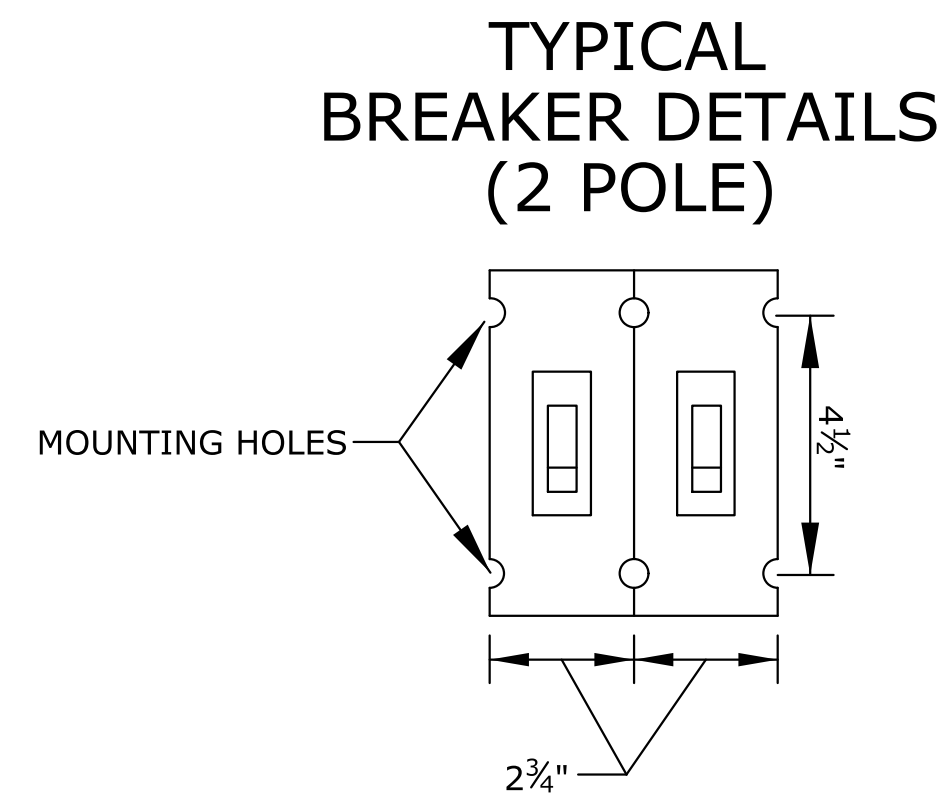
STATE	PROJECT NO.	YEAR	SHEET NO.	TOTAL SHEETS
KANSAS	472-84780	2015	77	227



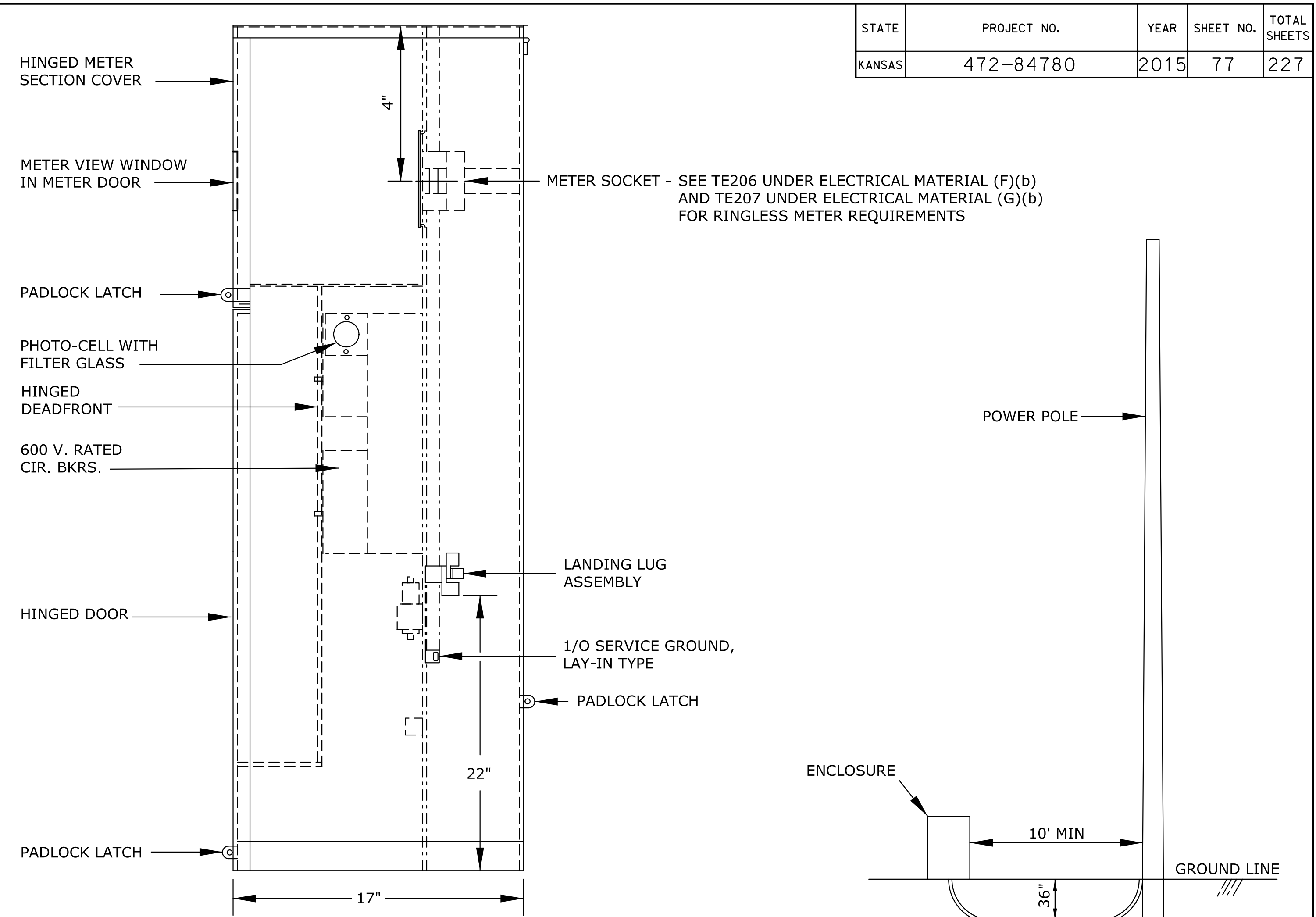
WIRING DIAGRAM



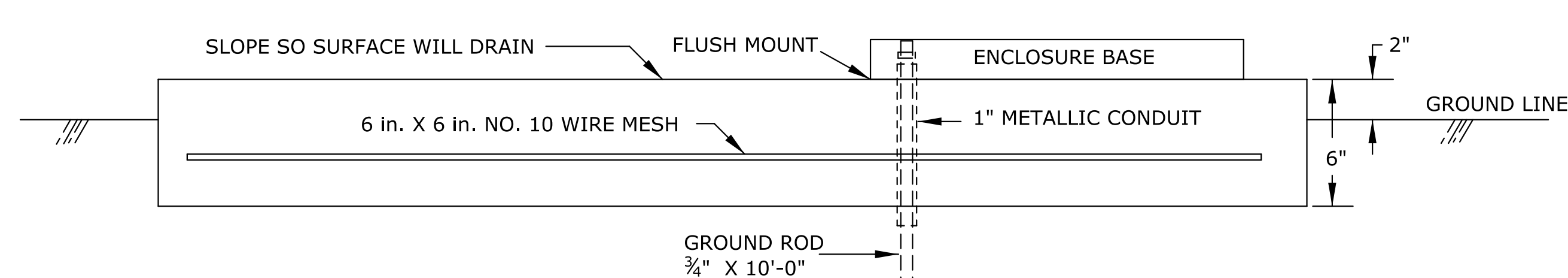
FRONT VIEW



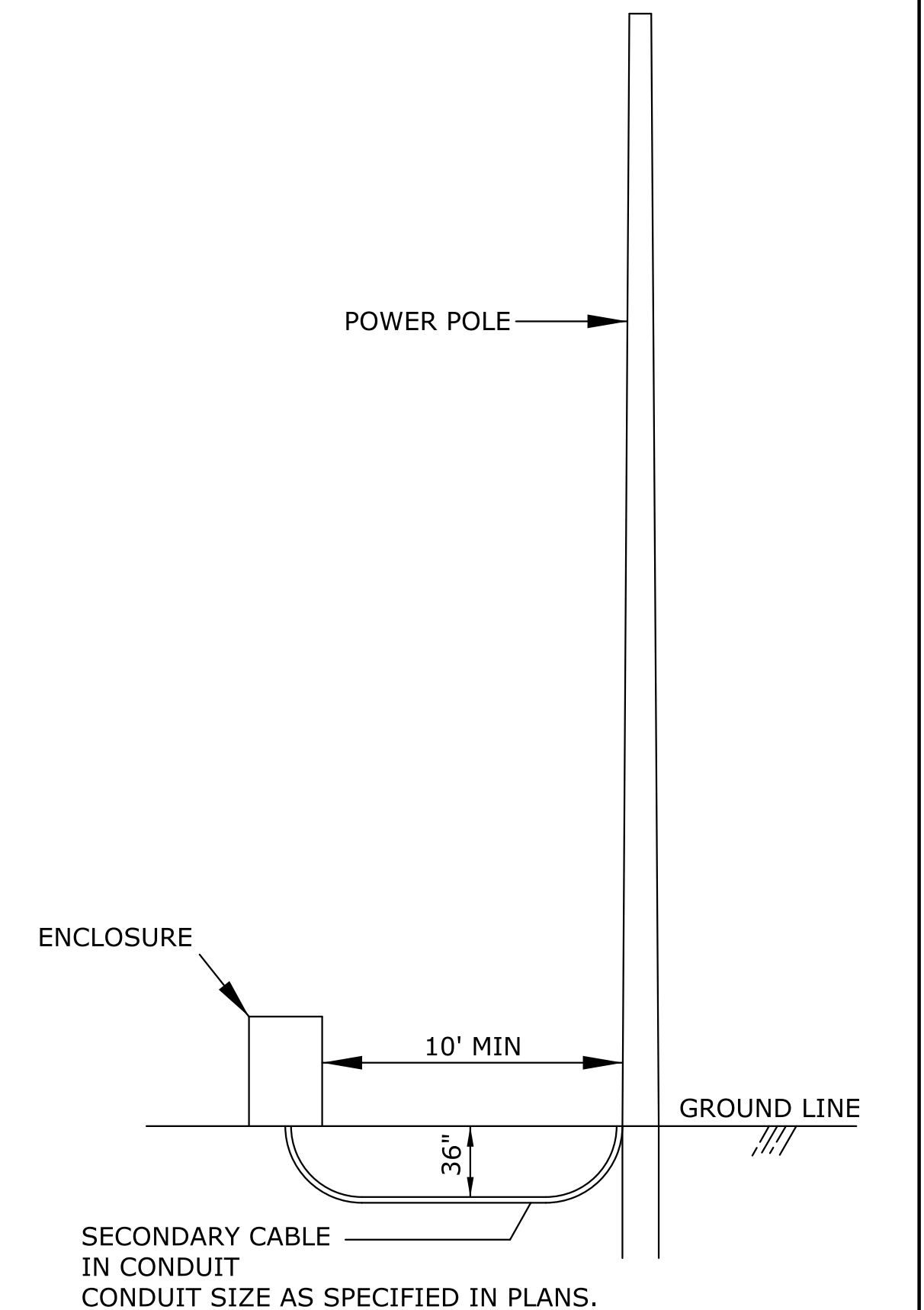
TYPICAL BREAKER DETAILS (2 POLE)



SIDE VIEW



NOTE: GROUND ROD SHALL EXTEND 2 INCHES ABOVE THE CONCRETE PAD INSIDE OF ENCLOSURE BASE.



POWER ARRANGEMENT

NOTE: POWER ARRANGEMENT SHALL MEET THE LOCAL UTILITY COMPANY SPECIFICATIONS.

NOTES:

THE ENCLOSURE CABINET SHALL BE CONSTRUCTED OF 5052 ALLOY ALUMINUM 0.125" THICK. THE CABINET SHALL BE OF CLEAN CUT DESIGN HAVING NO SHARP EDGES, CORNERS OR PROJECTIONS.

THE ENCLOSURE SHALL INCREASE IN SIZE WITH THE NUMBER OF CIRCUITS.

THE CUSTOMER DOOR SHALL BE HINGED THE FULL LENGTH OF THE DOOR AND HAVE SUITABLE MEANS OF HOLDING THE DOOR IN THE FULLY OPEN POSITION.

THE DEAD FRONT DOOR SHALL BE HINGED AND HAVE 3/4 TURN CLIPS OR OTHER SUITABLE MEANS OF LOCKING.

SERVICE ENTRANCE IN BACK OF ENCLOSURE SHALL HAVE A HINGED OR A LIFT OFF COVER WITH PAD LOCK PROVISIONS.

THE SECONDARY BREAKER FOR THE PHOTO-CELL CIRCUIT SHALL BE 277 VOLT, 15 AMP SINGLE POLE.

THE WIRING FROM PB1 AND PB2 TO T1 THROUGH T4 SHALL BE NO. 6 A.W.G. THW.

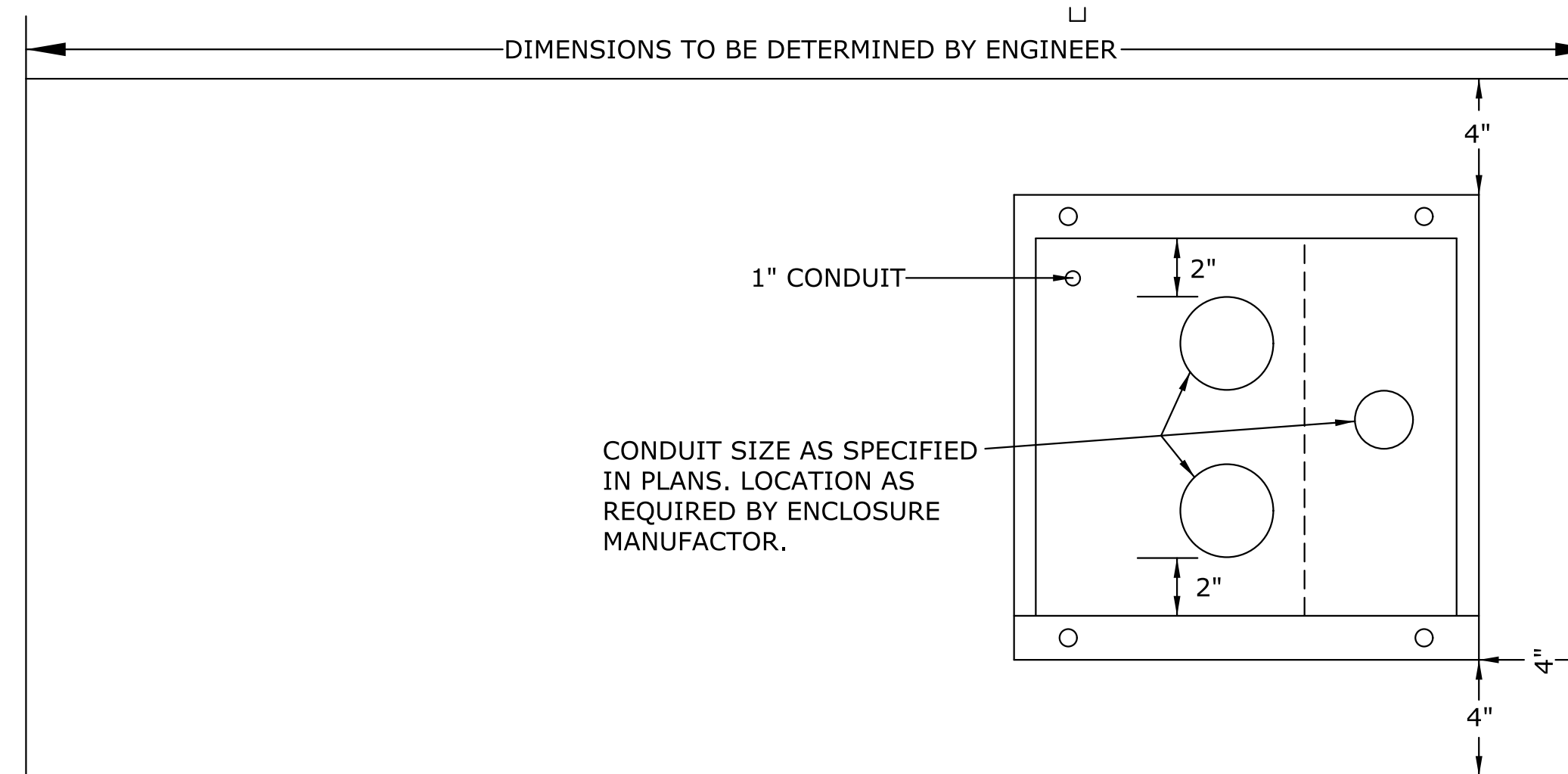
THE WIRING FOR THE LOAD AND LINE SIDE OF THE MAIN BREAKER SHALL BE THE SAME SIZE WITH THE WIRE.

THE WIRING FOR THE PHOTO ELECTRIC CONTROL CIRCUIT SHALL BE NO. 12 A.W.G. THW.

ALL WIRING AND WIRING METHODS SHALL COMPLY WITH THE MOST CURRENT NATIONAL ELECTRIC CODE STANDARDS. ANY CHANGES TO THESE STANDARDS SHALL BE APPROVED BY THE AUTHORITY HAVING JURISDICTION.

SEE PLAN SHEET

MAIN BREAKER	AMP
SECONDARY BREAKER	
CIRCUIT NO. 1	AMP
CIRCUIT NO. 2	AMP
CIRCUIT NO. 3	AMP
CIRCUIT NO. 4	AMP
ELECTRICALLY HELD CONTACTORS	
CIRCUIT NO. 1	AMP
CIRCUIT NO. 2	AMP
CIRCUIT NO. 3	AMP
CIRCUIT NO. 4	AMP



TOP VIEW

NOTE: THE DUCT FOR SECONDARY CABLE SHALL EXTEND 1" PAST THE END OF THE CONDUIT BEND.

NOTE: ALL CONDUIT TO EXTEND 1" MIN. ABOVE CONCRETE SURFACE.

PAD DIMENSIONS SHALL BE ADJUSTED ACCORDINGLY FOR THE WIDTH OF THE ENCLOSURE TO BE INSTALLED.

Drawn By : drp
 Plotted : 15-JAN-2015 15:34
 File : I:\2008\08807\001\Standards\08807-001 te202.dgn

3	01/05/15	Added See Meter Options on TE206 & TE207	C.E.	B.D.G.
2	12/28/11	Add SEE PLAN SHEET, Chg'd TopView/Pwr Argm	C.E.	B.D.G.
1	8/20/08	Chg'd Mech. Held Contactors to Elec. Held	V.H.	C.A.L.
NO.	DATE	REVISIONS	BY	APP'D

KANSAS DEPARTMENT OF TRANSPORTATION

TYPICAL ENCLOSURE DETAILS

TE202

DESIGNED	C.E.	APP'D	Brian D. Gower
DESIGN CK.	B.D.G.	TRACED	
	B.D.G.	QUAN. CK.	
	B.D.G.	TRACE CK.	