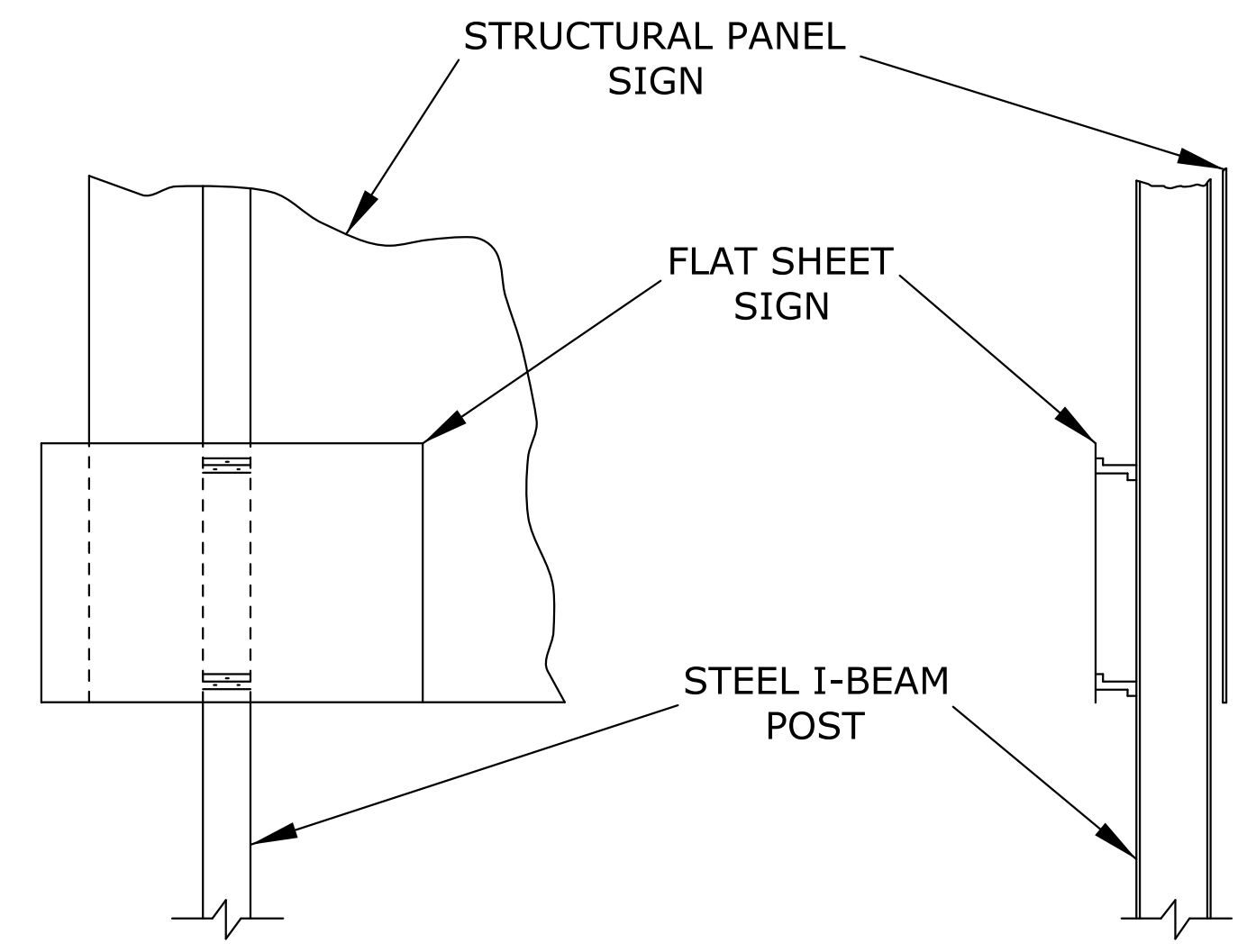
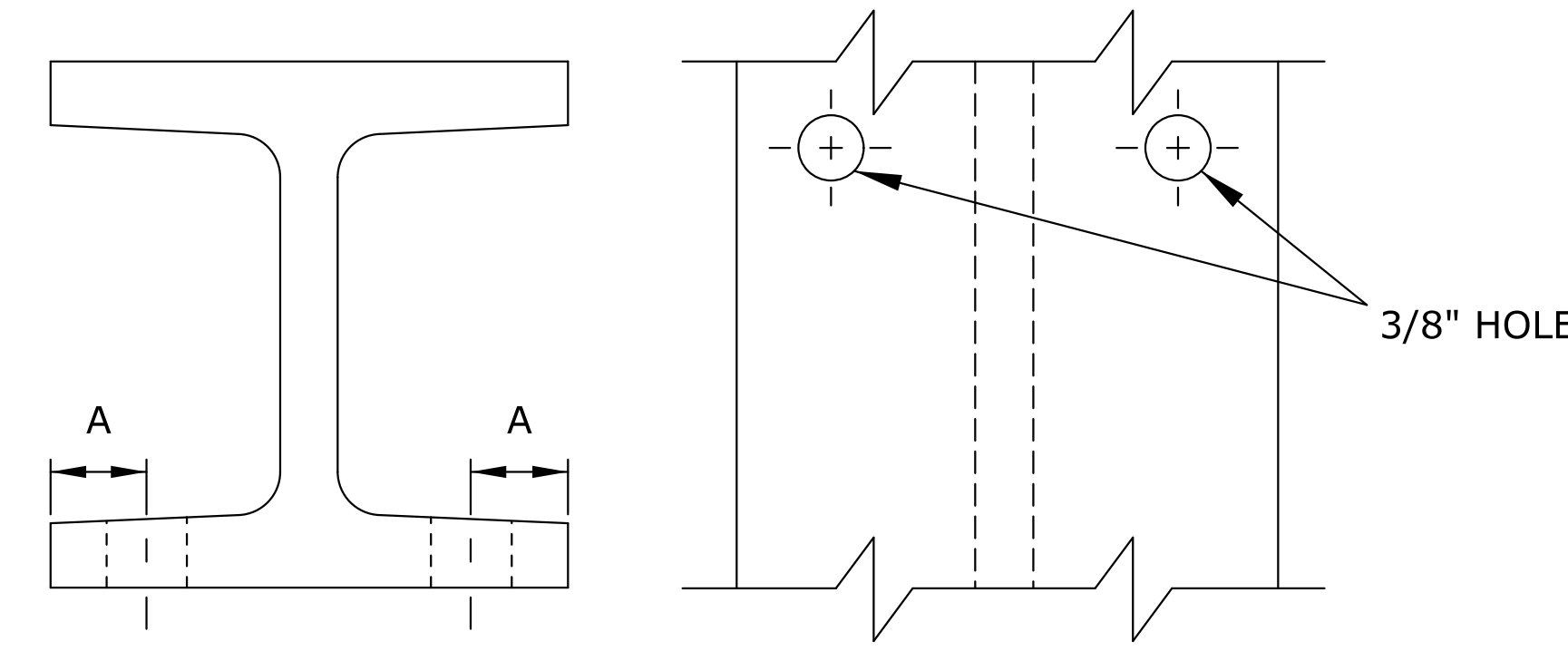


SECTION A-A

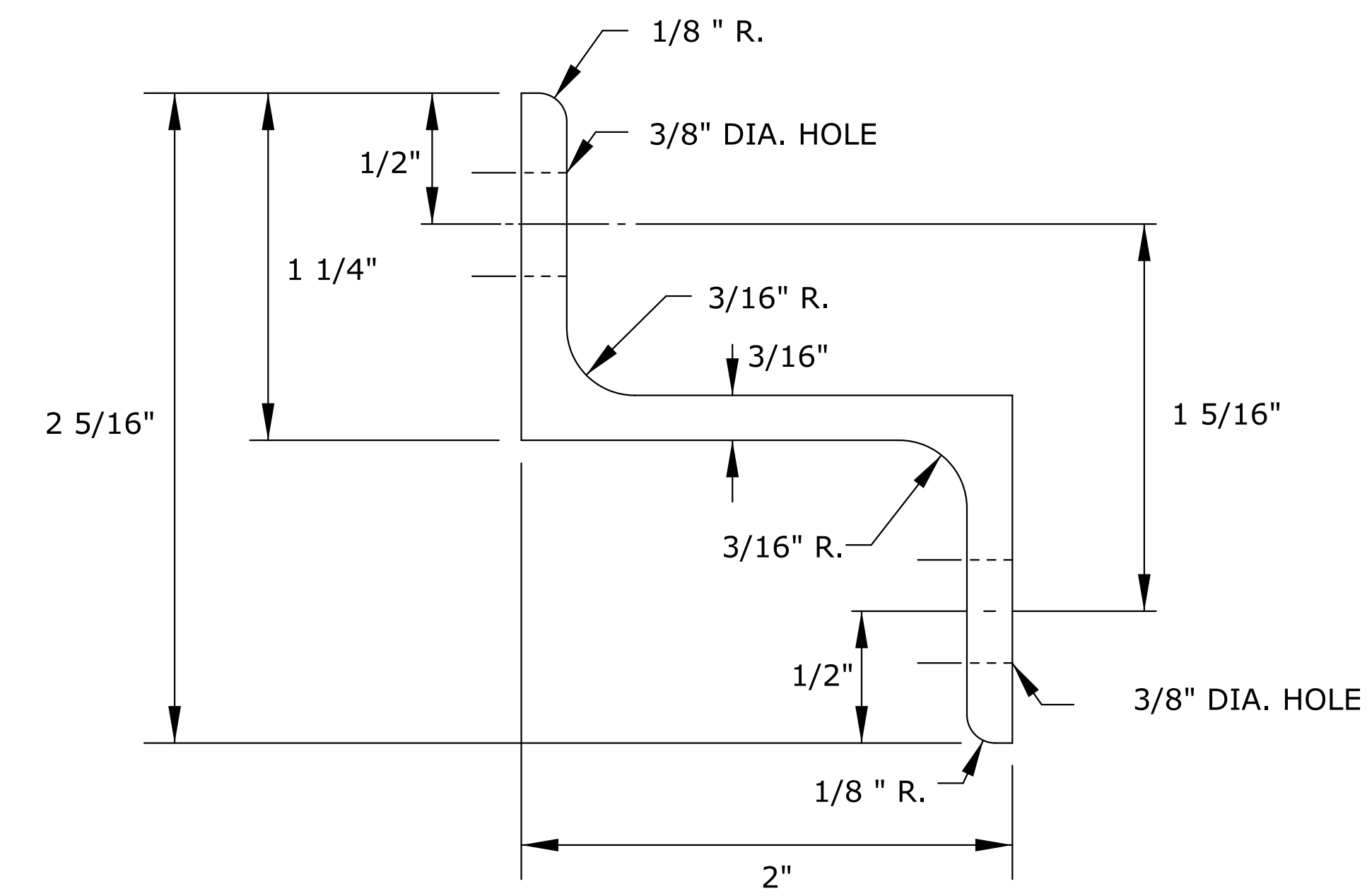


TYPICAL MOUNTING

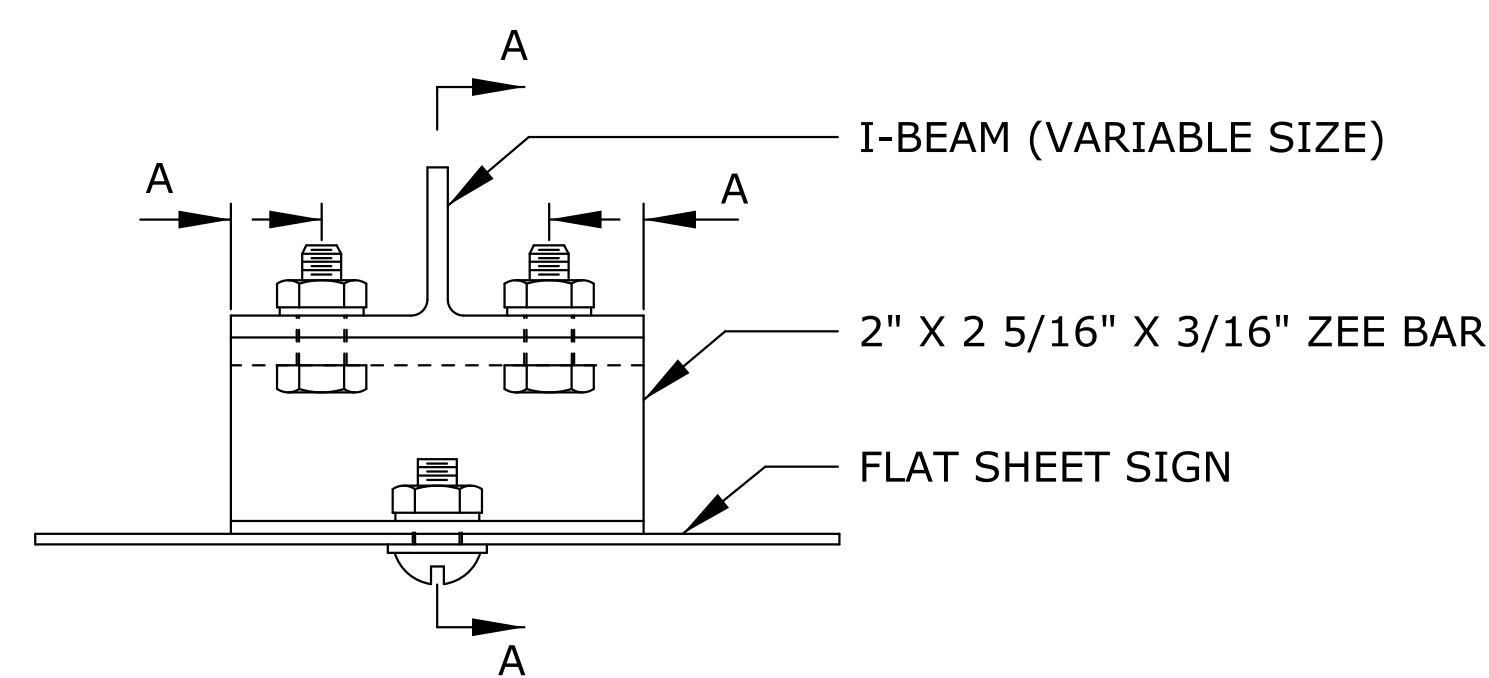
BEAM	A
S3X5.7	7/16"
W6X9	3/4"
W10X12	1 1/4"
W10X22	1 1/4"



TYPICAL I-BEAM



TYPICAL ZEE BAR



NOTE:  
ALL BOLTS, NUTS, WASHERS & MACHINE SCREWS SHALL BE STEEL.

ALL DIMENSIONS ARE IN INCHES.

NO.	DATE	REVISIONS	BY	APP'D

KANSAS DEPARTMENT OF TRANSPORTATION  
DETAILS FOR MOUNTING  
FLAT SHEET SIGN ON  
STEEL I-BEAM POST

TE487 7/1/03

FHWA APPROVAL	7/22/2003	APP'D	Steven A. Buckley
DESIGNED	D.D.G.	DETAILED	B.A.H.
DESIGN CK.	S.A.B.	DETAIL CK.	D.D.G.
		QUANTITIES	TRACED
		QUAN. CK.	TRACE CK.

Drawn By : drp  
 Plotted : 16-JAN-2015 08:10  
 File : I:\2008\08807\001\Standards\08807-001 TE487.dgn