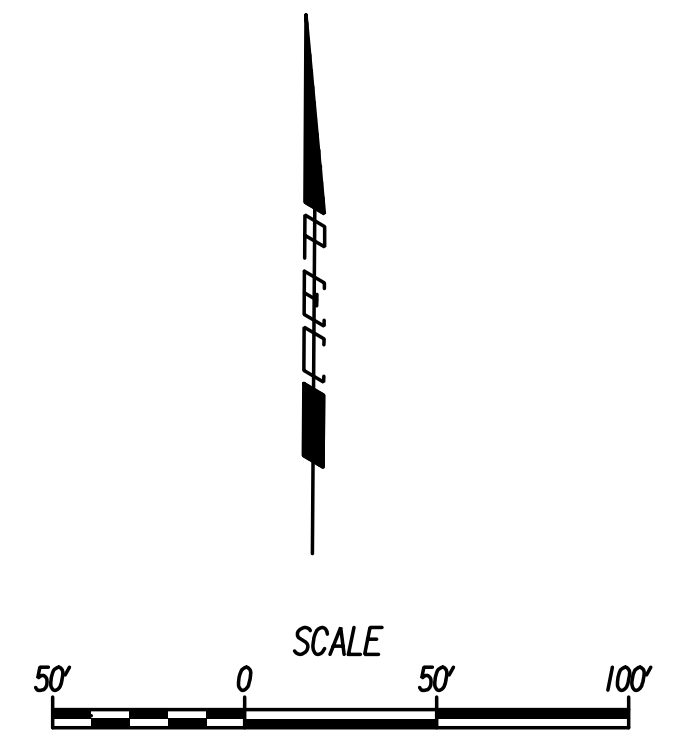
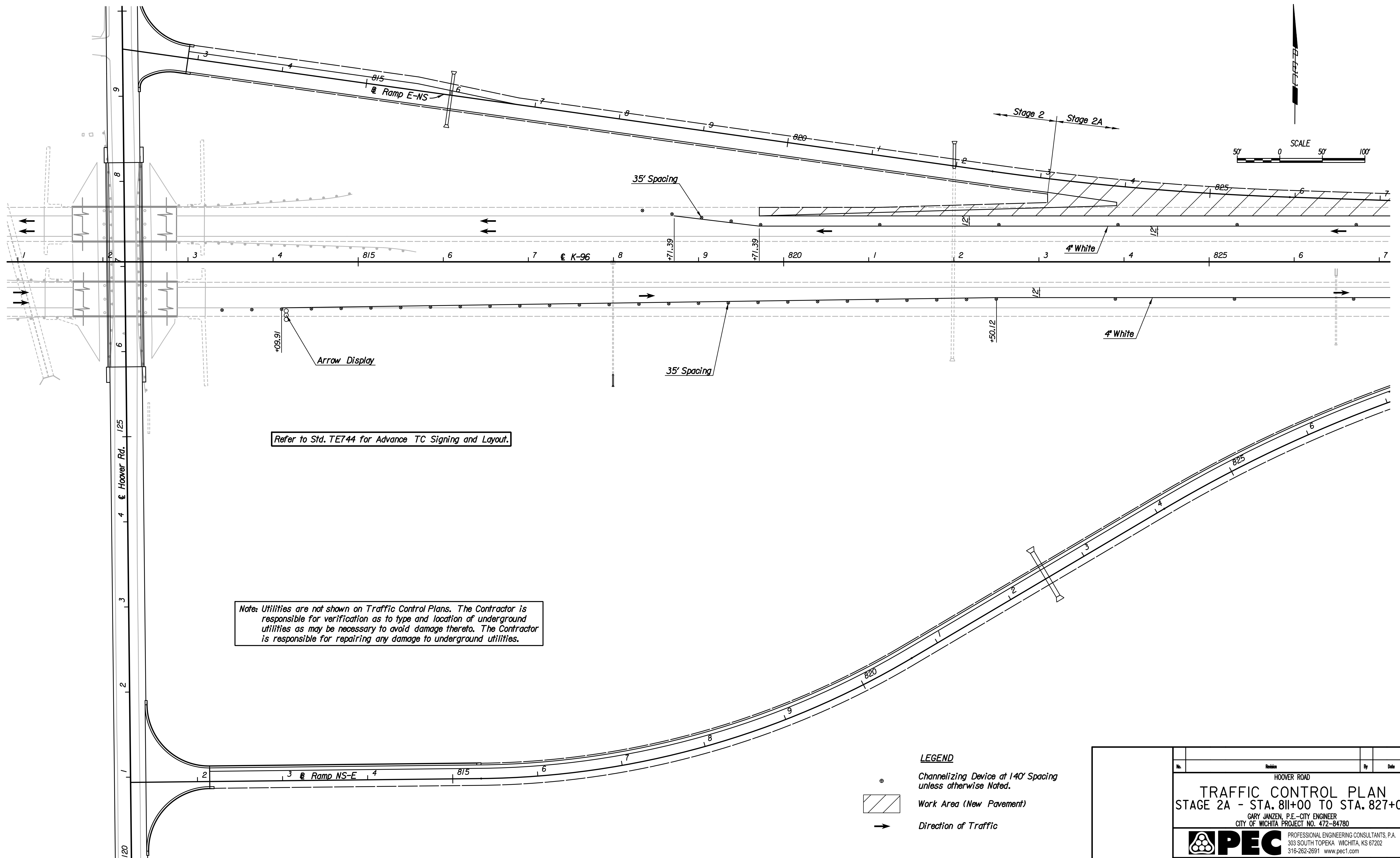


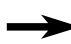



Plotted By: drp Date: 1/16/2015 9:25:54 AM  
 FILE: I:\2008\08807\001\Traffic Control\08807-001K96 811.dgn



Refer to Std. TE744 for Advance TC Signing and Layout.

Note: Utilities are not shown on Traffic Control Plans. The Contractor is responsible for verification as to type and location of underground utilities as may be necessary to avoid damage thereto. The Contractor is responsible for repairing any damage to underground utilities.

- LEGEND**
-  Channelizing Device at 140' Spacing unless otherwise Noted.
  -  Work Area (New Pavement)
  -  Direction of Traffic

No.	Revision	By	Date
	HOOVER ROAD		
<b>TRAFFIC CONTROL PLAN</b>			
STAGE 2A - STA. 811+00 TO STA. 827+00			
GARY JANZEN, P.E.-CITY ENGINEER CITY OF WICHITA PROJECT NO. 472-84780			
 PROFESSIONAL ENGINEERING CONSULTANTS, P.A. 303 SOUTH TOPEKA WICHITA, KS 67202 316-262-2691 www.pec1.com			
Designed by	JPS	Job No.	08807-001
Drawn by	DRP	Date	Jan., 2015
			Sht. 124 of 227