

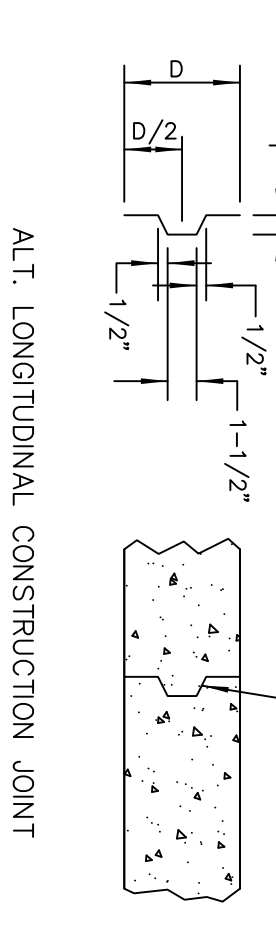
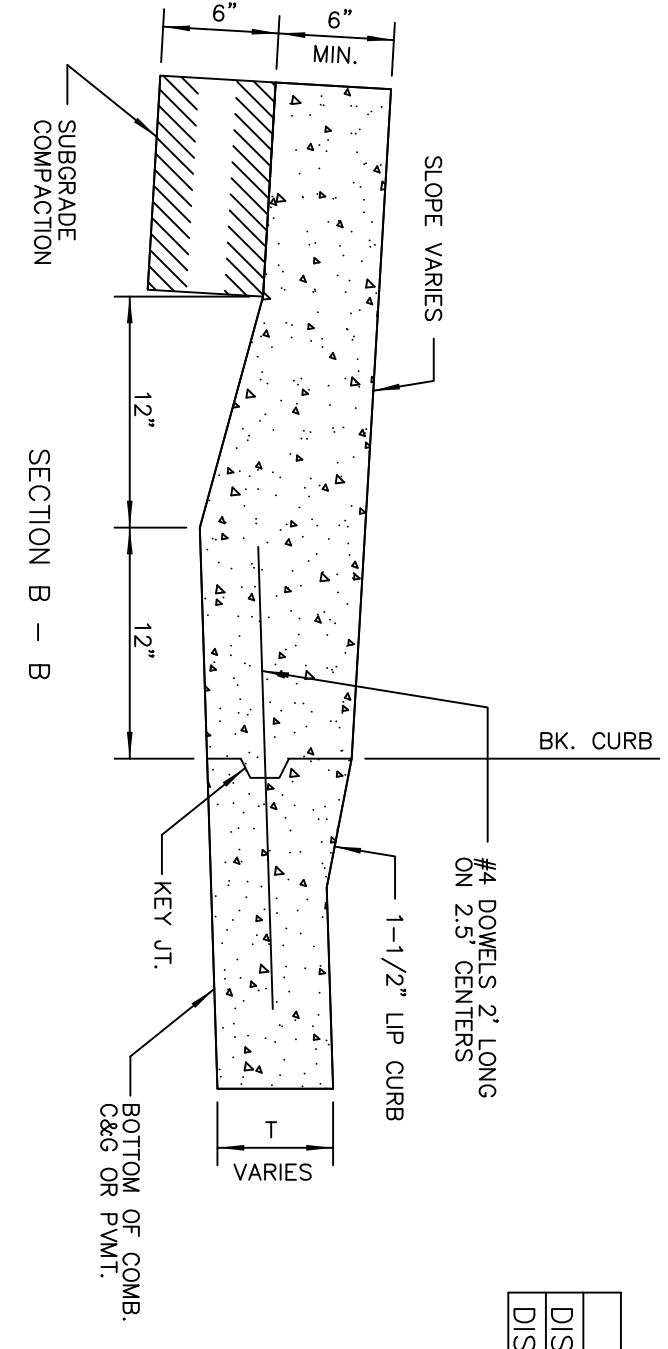
PARKING WIDTH "P"	4'	4.5'	5'	5.5'	6'	6.5'
DIST. OF PT. "A1" ABOVE TOP OF FULL CURB	-08"	0.22"	0.18"	0.22"	0.18"	0.22"
DIST. OF PT. "Z" BELOW TOP OF FULL CURB	-08"	0.02"	0.18"	0.22"	0.18"	0.22"

FULL RAMP DRIVE (P = 4.0' TO 6.5')

PARKING WIDTH "P"	9'	10'	11'	12'	13'	14.5'	20'	25'	30'	35'	40'	45'	50'
ABSOLUTE MAX. DIST. OF PT. "WG" ABOVE OR BELOW TOP OF FULL CURB	0.27"	0.32"	0.37"	0.52"	0.80"	1.35"	1.85"	2.35"	2.85"	3.35"	3.85"	4.35"	4.85"
OPTIMUM MAX. DIST. OF PT. "WG" ABOVE OR BELOW TOP OF FULL CURB	0.27"	0.32"	0.37"	0.52"	0.62"	0.96"	1.22"	1.48"	1.74"	2.00"	2.26"	2.52"	2.78"
OPTIMUM MIN. DIST. OF PT. "WG" ABOVE OR BELOW TOP OF FULL CURB	0.19"	0.21"	0.23"	0.25"	0.30"	0.42"	0.52"	0.62"	0.72"	0.82"	0.92"	1.02"	1.12"
ABSOLUTE MIN. DIST. OF PT. "WG" ABOVE OR BELOW TOP OF FULL CURB	-19"	-16"	-13"	-10"	-06"	0.00"	0.15"	0.25"	0.35"	0.45"	0.55"	0.65"	0.75"

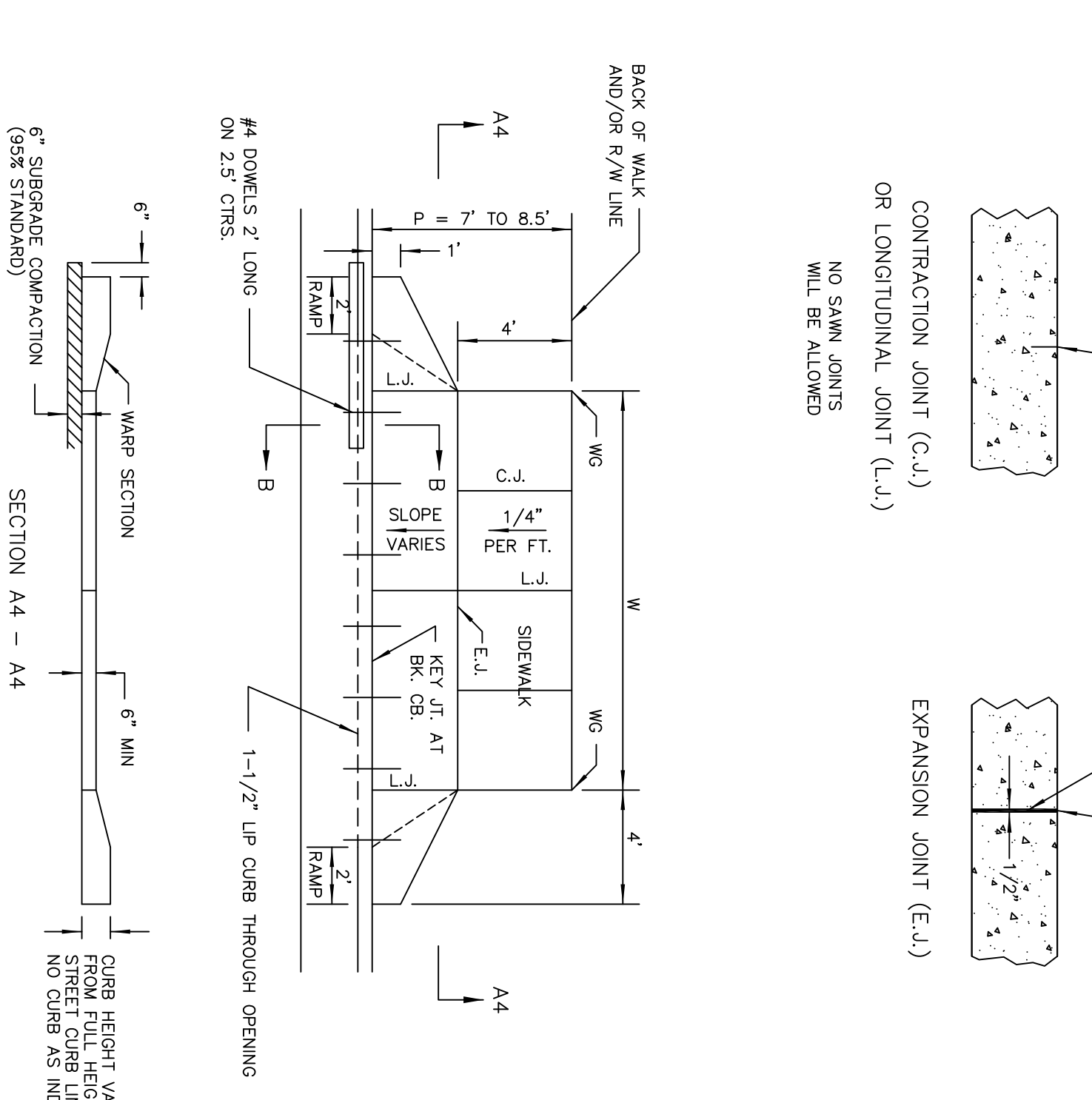
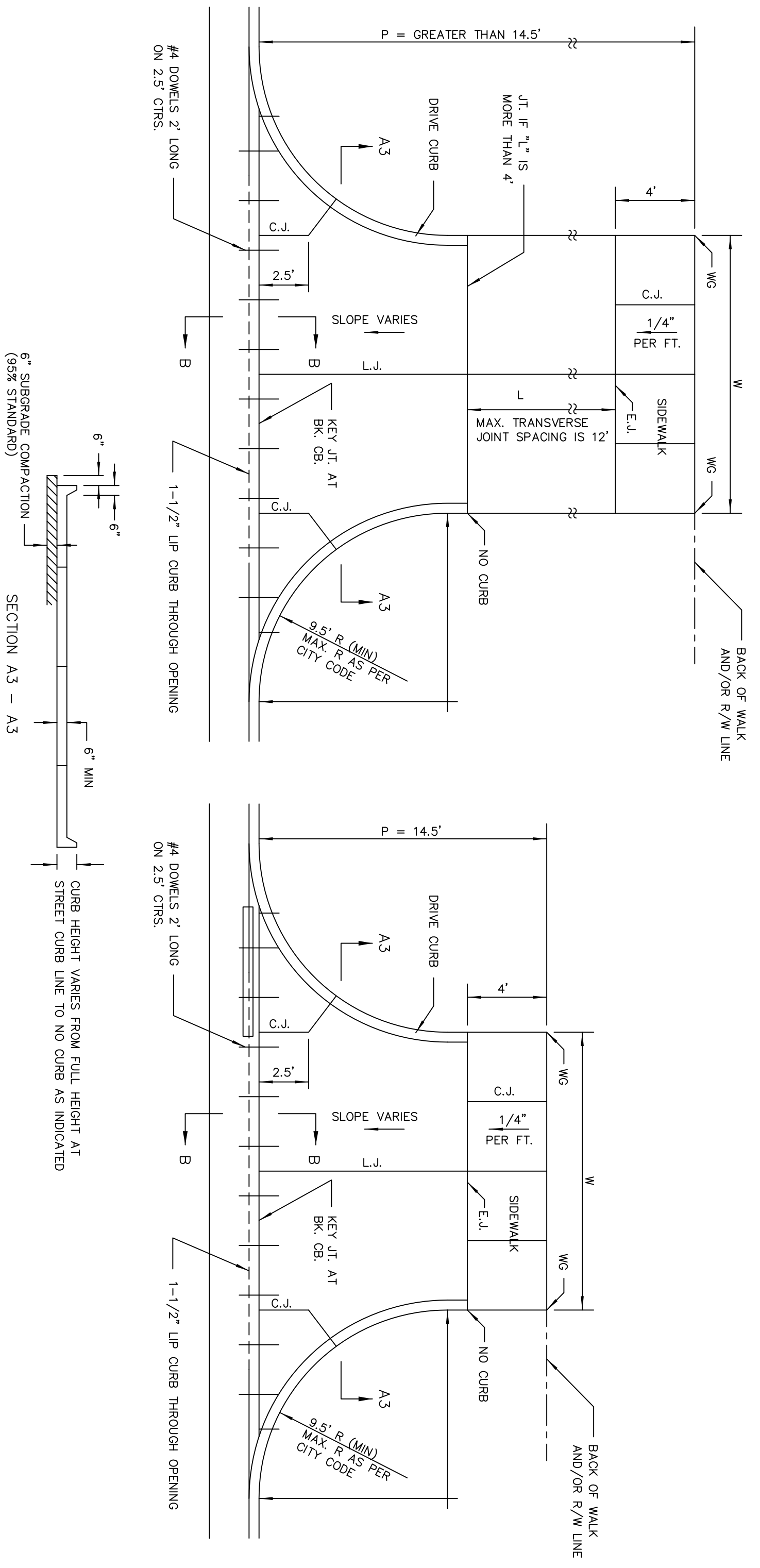
RADIUS RAMP DRIVES (P = 9.0' & GREATER)

BACK OF CURB DETAIL



GENERAL NOTES

1. DRIVEWAY CONSTRUCTION DETAILED ON THIS SHEET IS FOR USE WITH FULL HEIGHT STREET CURBS. DRIVEWAY CONSTRUCTION WITH RAMP CURBS AND/OR FULL WALK SHALL BE SHOWN ON SEPARATE SHEETS FOR DRIVEWAY CONSTRUCTION WITH RAMP CURBS AND/OR FULL WALK.
2. ONE LONGITUDINAL JOINT SHALL BE CONSTRUCTED ALONG THE CENTERLINE OF DRIVES HAVING EQUAL SPANNS NOT TO EXCEED 10' FOR DRIVES WITH A "W" DIMENSION GREATER THAN 24'.
3. DRIVEWAY WIDTH DENOTED AS "W" ON THE DETAIL DRAWINGS SHALL BE A MINIMUM OF 10' AND A MAXIMUM OF 30'. THE MAXIMUM OPENING FOR RADII TYPE DRIVES WITH CURBS THROUGH THE RADII SHALL NOT EXCEED 52' AT THE STREET CURB LINE.
4. CONTRACTION JOINT SPACING IN THE DRIVEWAY WALK SECTION SHALL BE A MINIMUM OF 3' AND A MAXIMUM OF 6' AND ARE TO BE EQUALLY SPACED WITHIN THIS RANGE. WALK SECTION SHALL BE CONSTRUCTED TO THE SAME THICKNESS AS THE DRIVEWAY.
5. DOWEL BARS SHALL BE OMITTED FROM THE KEVED CONSTRUCTION JOINT ALONG THE BACK OF DRIVEWAY CONSTRUCTION.
6. ADDITIONAL THICKNESS OF DRIVE AS INDICATED IN THE DRAWINGS WILL NOT BE PAID FOR DIRECTLY AND THIS COST SHALL BE INCLUDED IN THE UNIT PRICE BID FOR THE DRIVEWAY CONSTRUCTION.
7. ONE HALF INCH EXPANSION JOINTS SHALL BE INSTALLED WHEREVER DRIVE CONSTRUCTION ADJACENT TO DRIVEWAY CONSTRUCTION SHALL BE INSTALLED ALONG THE PROPER LINE AND/OR BACK OF WALK LINE WHEN DRIVE CONSTRUCTION ALONG THIS LINE ADJACENT TO DRIVEWAY CONSTRUCTION IS ON CONCRETE DRIVE EXPANSION.
8. ALL DRIVEWAYS SHALL BE A MINIMUM OF 6" IN THICKNESS AND SHALL BE WITHOUT REINFORCEMENT. DRIVEWAYS SHALL BE CONSTRUCTED WITH 6"x12" W4 WELDED WIRE FABRIC AUTHORIZED BY THE PROPERTY OWNER WITH THE ENGINEER'S CONCURRENCE.
9. OPTIMUM DRIVEWAY ELEVATIONS SHOWN IN THE TABLES ARE TO BE USED WHEREVER POSSIBLE. ABSOLUTE MAXIMUM AND MINIMUM ELEVATIONS ARE TO BE USED ONLY WHEN THESE VALUES WILL PERMIT NEW CONSTRUCTION TO MATCH EXISTING DRIVES OR PARKING LOTS. DRIVEWAY ELEVATIONS ARE TO BE BASED ON A FULL CURB HEIGHT ELEVATION OF 0.55' ABOVE FINISHED GRADE. VALUES SHOWN IN THE TABLES WITH MINUS SIGNS INDICATE ELEVATIONS BELOW TOP OF FULL HEIGHT CURB.



PARKING WIDTH "P"	14.5'	20'	25'	30'	35'	40'	45'	50'
ABSOLUTE MAX. DIST. OF PT. "WG" ABOVE OR BELOW TOP OF FULL CURB	0.72"	1.27"	1.77"	2.27"	2.77"	3.27"	3.77"	4.27"
OPTIMUM MAX. DIST. OF PT. "WG" ABOVE OR BELOW TOP OF FULL CURB	0.70"	1.04"	1.30"	1.56"	1.82"	2.08"	2.34"	2.60"
OPTIMUM MIN. DIST. OF PT. "WG" ABOVE OR BELOW TOP OF FULL CURB	0.30"	0.42"	0.52"	0.62"	0.72"	0.82"	0.92"	1.02"
ABSOLUTE MIN. DIST. OF PT. "WG" ABOVE OR BELOW TOP OF FULL CURB	0.00"	0.00"	0.15"	0.25"	0.35"	0.45"	0.55"	0.65"

PARKING WIDTH "P"	7'	7.5'	8'	8.5'
ABSOLUTE MAX. DIST. OF PT. "WG" ABOVE OR BELOW TOP OF FULL CURB	-08"	0.02"	0.18"	0.22"
OPTIMUM MAX. DIST. OF PT. "WG" ABOVE OR BELOW TOP OF FULL CURB	-08"	0.02"	0.18"	0.22"
OPTIMUM MIN. DIST. OF PT. "WG" ABOVE OR BELOW TOP OF FULL CURB	-15"	-16"	-17"	-17"
ABSOLUTE MIN. DIST. OF PT. "WG" ABOVE OR BELOW TOP OF FULL CURB	-25"	-20"	-20"	-20"

FULL RADIUS DRIVES (P = 14.5' & GREATER)

FULL RAMP DRIVE (P = 7.0' TO 8.5')

CITY OF WICHITA
PUBLIC WORKS ENGINEERING

STANDARD DRIVE ENTRANCES FULL HEIGHT CURB

CITY ENGINEER

PROJECT NUMBER	472-85107	DATE	04/21/14
ACTING	COA NUMBER	XXXXXX	DESIGN
CITY ENGINEER'S OFFICE	CITY HALL - SEVENTH FLOOR	WICHITA, KANSAS 67202-1820	SHEET
(316) 268-4114 FAX	(316) 268-4114 FAX		ME
			10