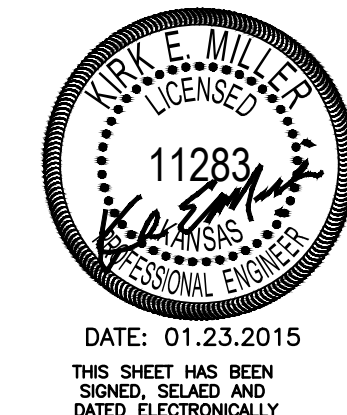
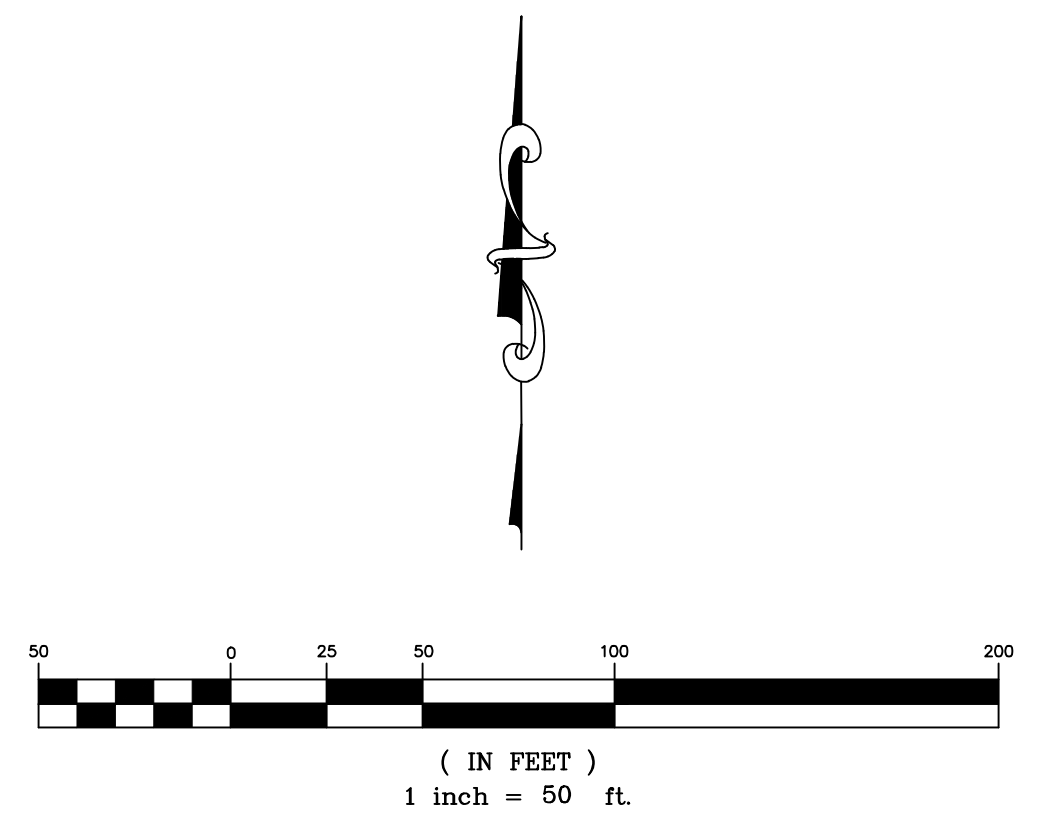


DRIVEWAY INFORMATION									
DRIVEWAY NUMBER	COORDINATES		STATIONING		SERVING		ADDRESS	EXISTING WIDTH	CONCRETE (SY)
	NORTHING	EASTING	BASELINE	OFFSET	LOT	BLOCK			
1	60601.71	55211.6	18+68.28	15.50 Lt	26	1	4235 S Hydraulic	15.4	32.41
2	60571.52	55206.75	18+42.57	15.50 Rt			4309 S Hydraulic	12	30.02
3	60600.76	55186.49	18+42.98	15.50 Lt	25	1	1644 E Georgia	12	27.26
4	60599.40	55139.48	17+95.69	15.50 Lt	25	1	1644 E Georgia	12	28.31
5	60598.68	55074.90	17+31.09	15.50 Lt	24	1	1638 E Georgia	12	30.68
6	60568.66	55073.71	17+29.51	15.50 Rt			4309 S Hydraulic	12	28.53
7	60597.86	55005.57	16+61.75	15.50 Lt	23	1	1632 E Georgia	15.83	30.36
8	60582.53	54979.83	16+35.84	15.50 Lt	22	1	1626 E Georgia	12	28.58
9	60566.96	54935.38	15+91.20	15.50 Rt	3	-	1627 E Georgia	17.83	40.02
10	60566.24	54873.82	15+29.64	15.50 Rt	4	-	1621 E Georgia	12	28.58
11	60596.16	54860.83	15+17.00	15.50 Lt	21	1	1620 E Georgia	12.43	29.59
12	60565.38	54801.22	14+57.04	15.50 Rt	5	-	1616 E Georgia	23.36	51.17
13	60595.36	54793.44	14+49.61	15.50 Lt	20	1	1614 E Georgia	12	28.84
14	60564.59	54733.87	13+89.68	15.50 Rt	6	-	1609 E Georgia	15.87	36.45
15	60594.65	54732.57	13+88.74	15.50 Lt	19	1	1608 E Georgia	18.76	42.44
16	60593.82	54661.89	13+18.04	15.50 Rt	7	-	1603 E Georgia	16.81	38.68
17	60563.68	54658.79	13+14.59	15.50 Lt	18	1	1602 E Georgia	18.32	41.38
18	60563.00	54599.07	12+54.59	15.50 Lt	17	1	1620 E Georgia	12	28.56
19	60593.04	54596.23	12+52.38	15.50 Rt	8	-	1621 E Georgia	20	45.12
20	60592.32	54535.45	11+91.59	15.50 Lt	9	-	1615 E Georgia	12	29.07
21	60562.22	54532.58	11+88.37	15.50 Rt	16	1	1614 E Georgia	12	29.00
22	60561.9	54505.67	11+61.43	15.50 Lt	10	-	1609 E Georgia	12	29.04
23	60591.50	54459.98	11+16.13	15.50 Lt	15	1	1608 E Georgia	13.6	32.44
24	60561.38	54459.82	11+15.61	15.50 Rt	10	-	1609 E Georgia	12	29.00
25	60591.09	54434.06	10+90.16	15.50 Lt	14	1	1602 E Georgia	12	29.20
26	60560.62	54395.28	10+51.06	15.50 Rt	11	-	1603 E Georgia	12	29.25
27	60559.11	54265.53	09+21.32	15.50 Rt	12	-	1427 E Georgia	12	29.22
28	60588.37	54198.75	08+54.89	15.50 Lt	9	2	1420 E Georgia	21.29	47.48
29	60558.31	54196.38	08+52.16	15.50 Rt	13	-	1421 E Georgia	18.87	42.57
30	60588.08	54173.74	08+29.88	15.50 Lt	14	-	1415 E Georgia	12	28.68
31	60558.03	54172.83	08+28.61	15.50 Rt	8	2	1414 E Georgia	12	28.53
32	60557.53	54128.33	07+84.00	15.50 Rt	8	2	1414 E Georgia	18.28	41.78
33	60598.96	54069.66	07+25.78	15.50 Lt	7	2	1408 E Georgia	12.51	31.16
34	60566.76	54063.87	07+19.63	15.50 Rt	15	-	1409 E Georgia	15.77	37.39
35	60586.14	54005.48	06+61.60	15.50 Lt	6	2	1402 E Georgia	12	29.70
36	60556.04	54003.86	06+59.63	15.50 Rt	16	-	1403 E Georgia	12	29.76

CONTROL POINTS						
CONTROL NUMBER	COORDINATES		STATIONING		ELEVATION	DESCRIPTION
	NORTHING	EASTING	BASELINE	OFFSET		
CP#1	1660616.16	1655060.49	17+16.9	32.68 Lt	71.95	1" Iron Pipe
CP#2	1660615.43	1654991.8	16+48.2	32.75 Lt		5/8" Rebar
CP#3	1660614.69	1654923.1	15+79.4	32.82 Lt		Iron Pipe Pinch
CP#4	1660612.47	1654917.01	13+73.4	33.03 Lt		3/4" Iron Pipe
CP#5	1660545.59	1654647.49	13+03.1	33.02 Rt	71.21	1" Iron Pipe
CP#6	1660541.56	1654314.38	09+70.0	33.13 Rt		3/4" Iron Pipe
CP#7	1660607.96	1654315.71	09+70.0	33.38 Lt		3/4" Iron Pipe
CP#8	1660538.17	1654052.39	07+08.1	33.48 Rt		1/2" Iron Pipe Armstrong
CP#9	1660537.31	1653985.68	06+40.8	33.52 Rt	73.78	3/4" Iron Pipe

ALIGNMENT POINTS			
CONTROL NUMBER	COORDINATES		DESCRIPTION
	NORTHING	EASTING	
AL#1	1660586.39	1655307.46	Sta 19+63.50, Pmnt. Centerline of Hydraulic
AL#2	1660585.83	1655259.60	Sta 19+15.64, Pmnt. Starting Point
AL#3	1660570.38	1653947.53	Sta 06+04.00, EP

- Control Point
- Center Line Alignment Point



DATE: 01.23.2015
THIS SHEET HAS BEEN
SIGNED, SEALED AND
DATED ELECTRONICALLY

Gerogia Street
Control Map
Wichita, KS

	PROJECT NUMBER			
	KEM NO. 13175	FILE	DATE 03/2014	SHEET 2.0
DESIGN KM	DRAWN ME	REVISED		

117 E. Lewis, Wichita, KS 67202 (316)264-0242