

Benchmarks:
 BM #1: "□" Cut with Cross in Curb Return at Southeast Corner of Intersection of 37th St. N. and Tyler, Approximately 47' South and 49.5' East of the Center of the Intersection. Elevation = 1343.53 (NAVD 88)

BM #2: "□" Cut with Cross in South Curb Line of 37th St. N. Approximately 41.5' South and 1,026' East of the Center of the Intersection of 37th St. N. and Tyler. Elevation = 1337.39 (NAVD 88)

Sta. 0+00, Begin Line 1
 Construct Special Yard Inlet
 Top Elev. = 1339.90
 Connect to Existing 18" SWS RCP Stub.

Note:
 Contractor Shall Verify Depth and Location of Existing SWS Stub Prior to Construction

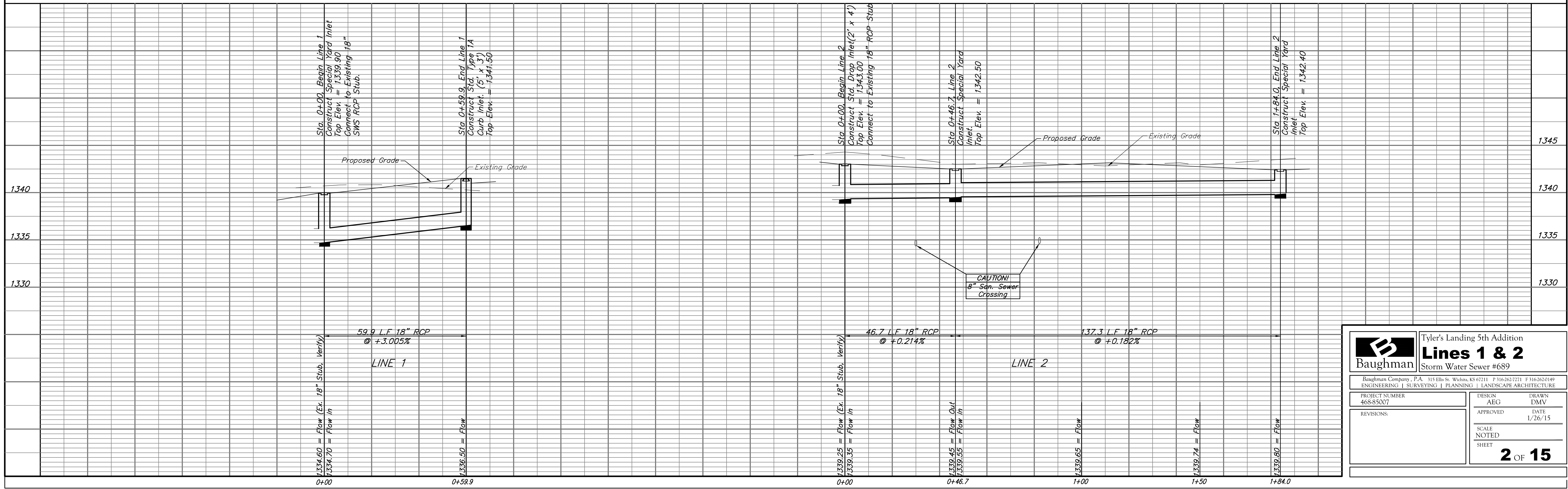
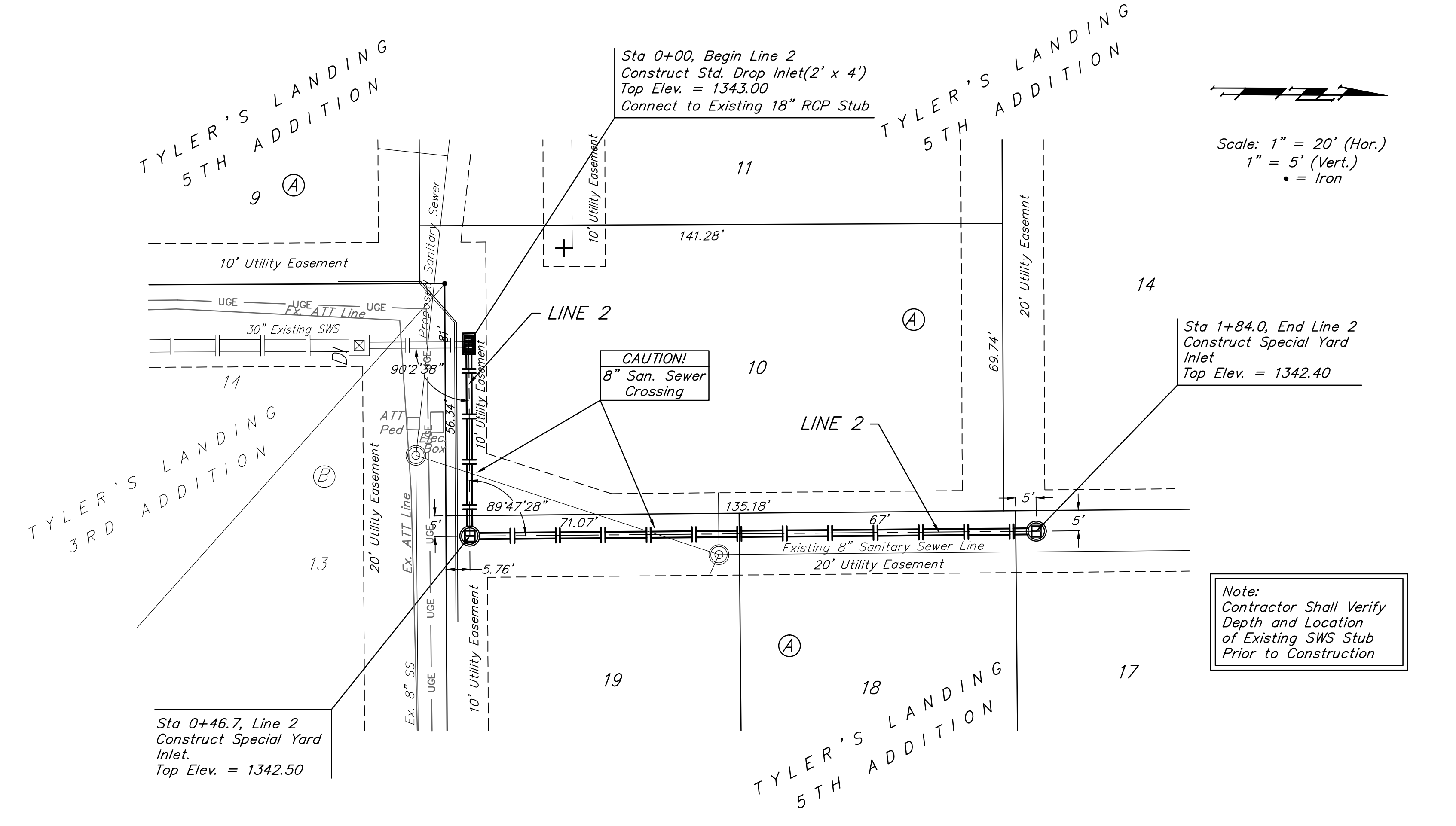
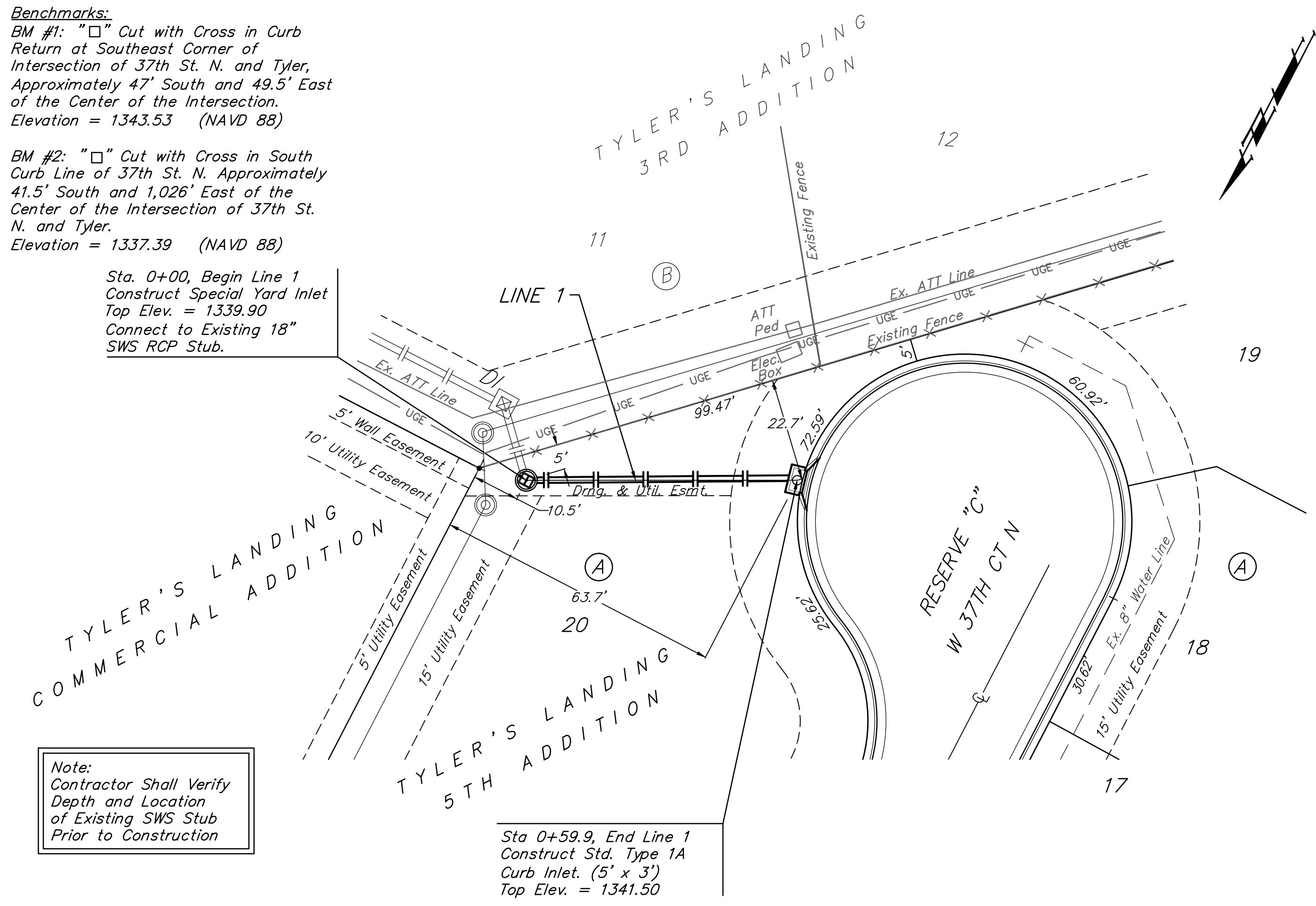
Sta 0+59.9, End Line 1
 Construct Std. Type 1A Curb Inlet. (5' x 3')
 Top Elev. = 1341.50

Sta 0+46.7, Line 2
 Construct Special Yard Inlet.
 Top Elev. = 1342.50

Sta 1+84.0, End Line 2
 Construct Special Yard Inlet
 Top Elev. = 1342.40

Note:
 Contractor Shall Verify Depth and Location of Existing SWS Stub Prior to Construction

Scale: 1" = 20' (Hor.)
 1" = 5' (Vert.)
 • = Iron



Baughman		Tyler's Landing 5th Addition Lines 1 & 2 Storm Water Sewer #689	
Baughman Company, P.A. 315 Ellis St. Wichita, KS 67211 P 316-262-2721 F 316-262-0149 ENGINEERING SURVEYING PLANNING LANDSCAPE ARCHITECTURE			
PROJECT NUMBER 468-85007	DESIGN AEG	DRAWN DMV	DATE 1/26/15
REVISIONS:	APPROVED	SCALE NOTED	SHEET 2 OF 15