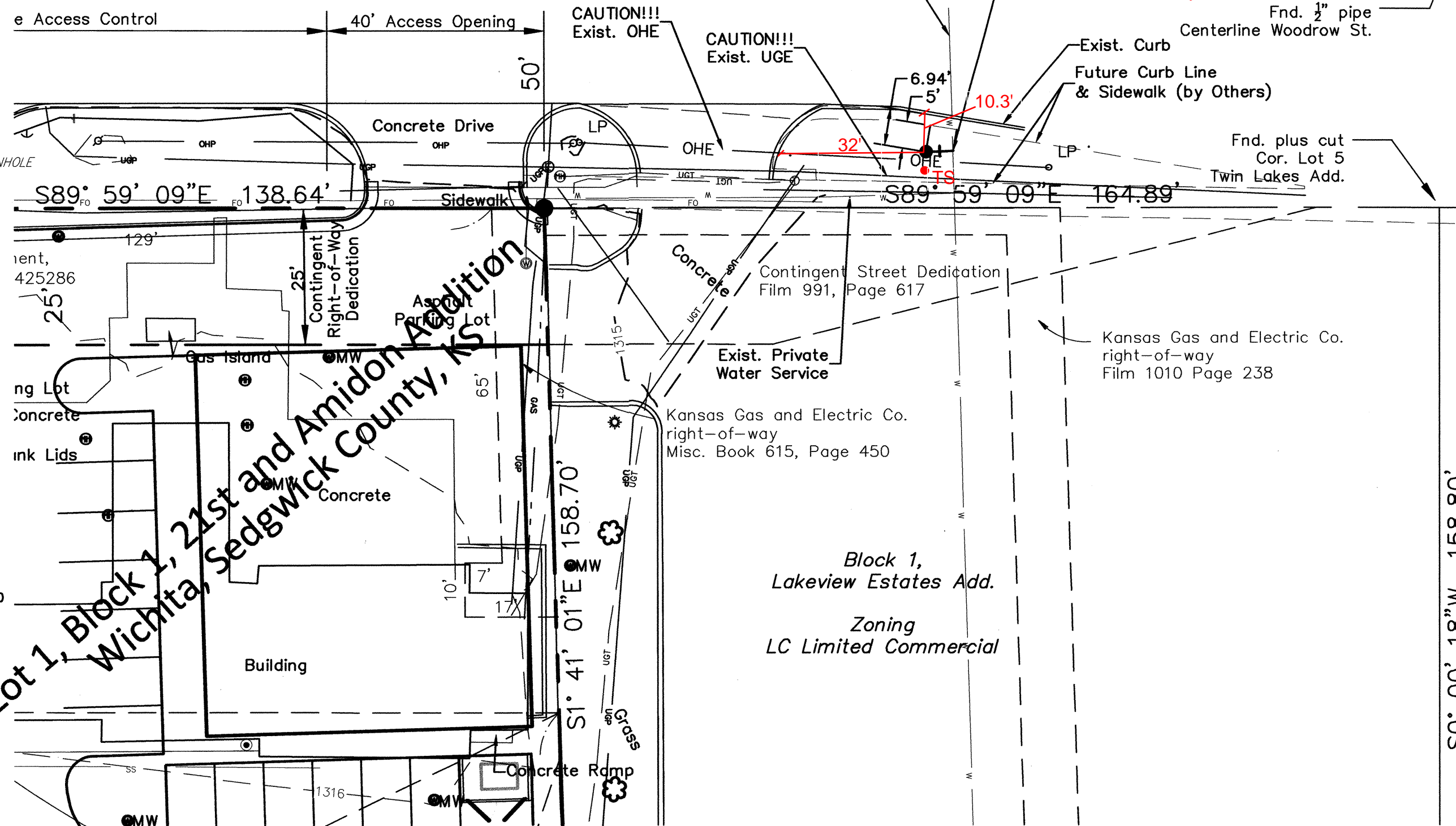


LEGEND

- P = Plotted
- M = Measured
- C = Calculated
- D = Described
- 1/2" IP 1/2" IRON PIPE (FOUND)
- 3/4" IP 3/4" IRON PIPE (FOUND)
- PEC 1/2" REBAR W/PEC CAP (FOUND)
- BD 4" BRASS DISC IN CONCRETE (FOUND)
- BLS 1/2" REBAR W/BENCHMARK SURVEYING (FOUND)
- C = GAS MAIN
- W = WATER MAIN
- SS = SANITARY SEWER
- OHE = OVERHEAD ELECTRIC
- SWS = STORM WATER SEWER
- UGE = UNDER GROUND ELECTRIC
- UGT = UNDER GROUND TELEPHONE
- E.B. = ELECTRIC BOX
- GUY ANCHOR
- G.P. = GUARD POST
- L.P. = LIGHT POLE
- P.P. = POWER POLE
- SIGN
- TANK FILLER CAP
- SS M.H. = SANITARY SEWER MANHOLE

004.69'(M) 1004.48'(P)
Lot 2 7-T27S-R1E

21st Street North



Note: New Fire Hydrant Location Shall Be Approx. 5' Behind Future Back of Curb Location (See Dimensions and Future Curb Line, This Sheet), Curb Line Geometry Based on Best Information Available At Time of Plans

Note: A 2" service is currently served from this 8" waterline, the valve is in the sidewalk.

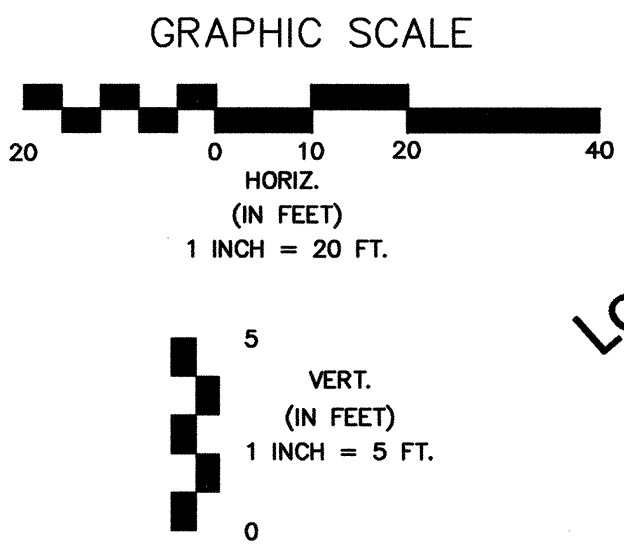
RECORD DRAWING 2-18-2015
Inspected By: MLT, Kaw Valley Engineering
Contractor: Larry Cook, Cook Brothers Construction
Sub: American Fire Sprinkler
Materials
CLOW 2013 Fire Hydrant (OSKALOOSA IOWA 250 PSI)
6" Ductile Iron Pipe
CLOW Gate Valve

PRIVATE PROJECT WATER LINE TO SERVE SE Corner of 21st & Amidon
Private Project Number 1819 PPW (607853)
CITY OF WICHITA, KANSAS

GENERAL NOTES:

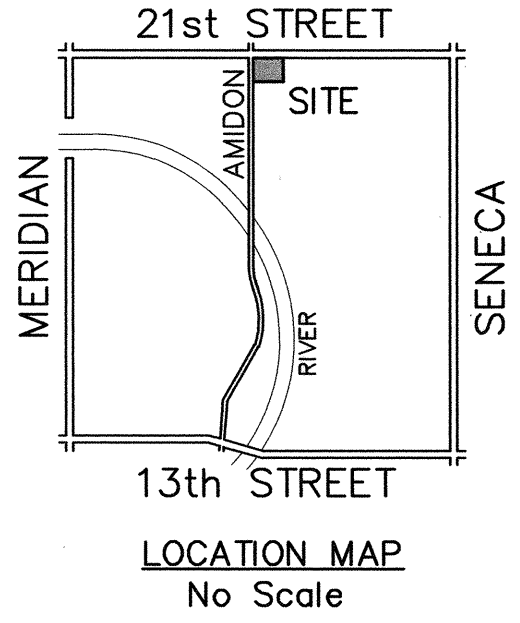
1. Existing utilities, both above and below ground, and their locations as shown on the plans, represent the best information available for design. The locations of utilities as shown on the plans are not guaranteed and the Contractor shall verify all utilities and their locations before beginning construction. Additional utilities, including relocated utilities, which are not shown on the plans may be encountered. In this event, the Contractor shall adjust his schedule and cooperate with the utility companies to ensure that their facilities be adjusted as required to clear construction. The Contractor shall exercise extreme caution while working near utilities.
2. All water mains and appurtenances shall be installed in accordance with the City of Wichita, Kansas Standard Specifications for Water Main Construction.
3. The Water Department shall field locate water valves one time during construction when requested by the Contractor. It shall be the responsibility of the Contractor to preserve such field locations during the construction process. Water valves, water valve boxes, or fire hydrants damaged during construction shall be repaired at the Contractor's expense. Contact Greg Lolley with the Wichita Water Department for water service information at 268-4555.
4. Opening and closing water valves shall be done slowly to prevent damage to the distribution system by a water hammer. All valves that are closed by the Contractor must be reopened as new construction permits.

The Contractor shall not start work on the project until the licensed inspector is present or authorizes the work. Any work done without inspection will be required to be uncovered for inspection.
5. Power Poles within close proximity to the new water line may require temporary bracing to facilitate construction. Contractor shall contact Shane Price at Westar Energy at 261-6315 prior to construction to coordinate pole bracing.
6. Temporary Blow-off Valves necessary to flush lines at existing water line tie-ins shall not be paid directly, but shall be considered INCIDENTAL to other items bid.
7. All open cut pipe trench under new pavement shall be back-filled with sand, flushed with water and vibrated.
8. All water pipe trench in pavement or driveways which will be required to carry traffic until permanent replacement shall be topped with a minimum of 6" crushed rock (Compacted) to be INCIDENTAL to the project. Contractor shall be required to maintain temporary crushed rock until permanent pavement is installed.
9. Contractor shall give all Property Owners and/or Tenants of developed property directly abutting the construction of the project a minimum of ten (10) days notice prior to the start of construction and a 24 hour notice prior to any planned water shut down.
10. Each Bidder shall visit the site of the project before submitting a proposal in order to become better informed of the existing field condition and obstacles which might be encountered during construction. Each Bidder should understand that no additional compensation will be awarded for extra work that should have been evaluated prior to bidding.
11. The Contractor shall provide all construction staking.
12. The Owner shall provide all construction inspection, testing and shop drawing review.
13. Waste material will be disposed of off-site by the Contractor. The site will have to be approved by the Engineer.
14. The Contractor shall use Best Management Practices (BMP's) to prevent eroded soil from entering ditches, culverts, and drainage areas. Standard details for erosion BMP's are available from the Engineer. The Contractor shall follow the intent of the BMP's, which act as a guideline.
15. The Contractor will be required to provide a minimum of Seventy-Two (72) hours advanced notice to Kansas One Call (1-800-344-7233) and all utility owners within the project prior to the beginning of construction and request that any existing lines be flagged.



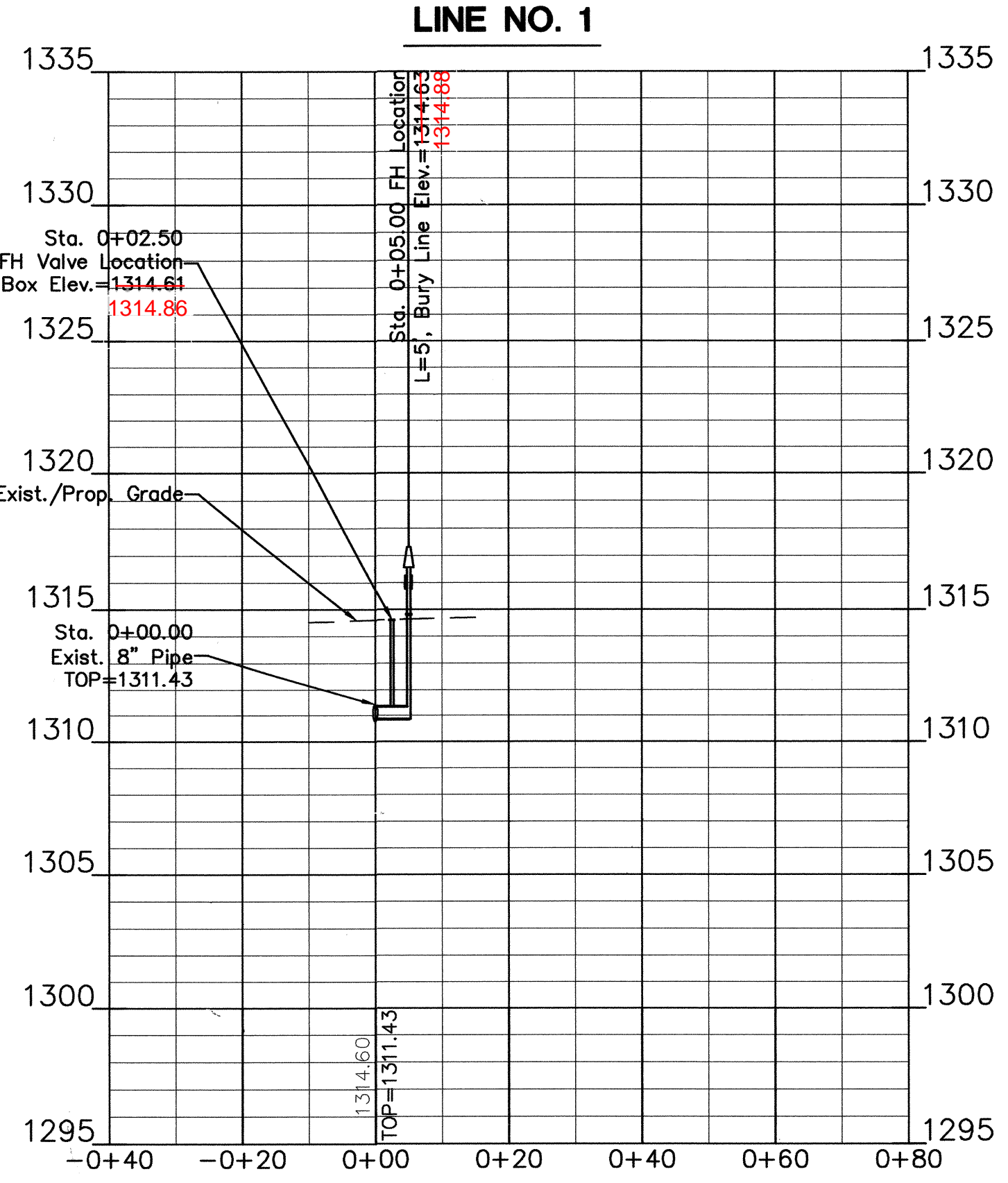
NOTE: Unless Otherwise Noted Elevations are Shown to Top of Pipe

NOTE: Existing Waterline Depth To Be Verified By Contractor Prior To Construction



LEGAL DESCRIPTION
Lot 1, Block 1, 21st and Amidon Addition, Wichita, Sedgwick County, Kansas.

SITE BENCHMARK
1. City of Wichita benchmark (brass disk) located at the Southwest corner of 21st & Amidon
Elevation 1315.76 (NAVD 88)



APPROVED AS NOTED
BY CITY ENGINEER OF WICHITA,
BY WICHITA WATER & SEWER DEPARTMENT,
& BY WICHITA FIRE DEPARTMENT

Public Works *Rebecca Drail 9/26/14*
Water & Sewer *Shane Price 5-28-14*
Fire *SWM 5-28-14*

NOTE TO CONTRACTORS
Inspection and testing for the waterline is to be provided by a Licensed Consulting Engineering Firm under contract with the Owner/Developer. Said inspection to be in accordance with the City of Wichita standard construction engineering practices and certified by a Professional Engineer Licensed in the state of Kansas. No work shall be performed in dedicated easements or public right-of-way by the Contractor without such inspection nor shall any work be commenced without written authorization by the City Engineer. All Construction and Materials shall comply with the City or Wichita Specifications and Standards (on file and available in the City Engineer's Office).

Private Property:
Installation and testing for the fire protection line is to be performed by a City of Wichita licensed fire protection contractor in accordance with the fire codes as adopted by the City of Wichita. All material and construction practices for the fire protection line shall comply with the fire codes as adopted by the City of Wichita (available from the City of Wichita Fire Department). The Contractor shall not commence work without notification and approval of the Wichita Fire Department. Inspection of the fire protection line is to be provided by a licensed Engineering Firm under contract with the Owner/Developer and the Fire Department. The contractor shall not start work until the project inspector is assigned to the project and present on the site. Any work done without inspection will be required to be uncovered for inspection.

AT & T Distribution
154 N. Broadway
Wichita, Ks 67202
316-268-2102

Cox Communications
701 East Douglas
Wichita, Ks 67202
316-262-4270 / 263-2061

Black Hills Energy
Wichita, KS
1-800-303-0357

Kansas Gas Service
1021 East 26th Street North
Wichita, Ks 67219
316-832-3126

Wichita Water Department
455 North Main, 8th Floor
Wichita, Ks 67202
316-268-4908

Kansas One Call
1-800-344-7233

STRIP MALL 21ST AND AMIDON PLAN PROFILE

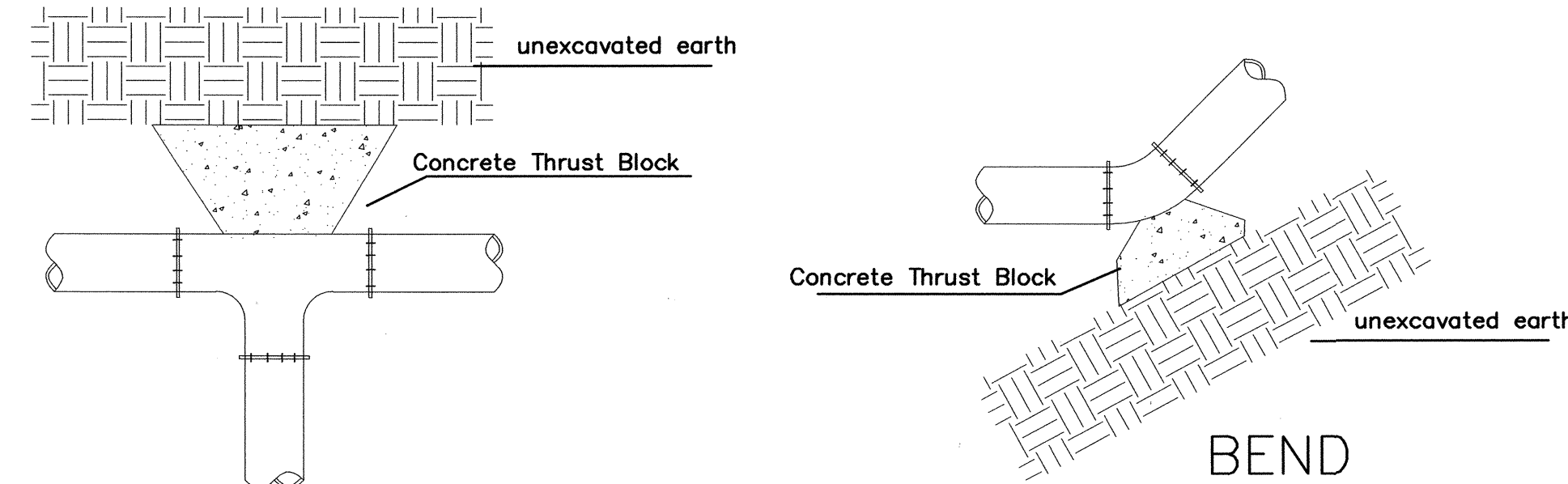
CITY OF WICHITA, KANSAS
GARY JANZEN, P.E. - CITY ENGINEER

POE & ASSOCIATES, INC.
CONSULTING ENGINEERS
5900 E. Central, Suite 2000 | Wichita, KS 67208-0242
Phone 316/685-1114 FAX 316/685-4444

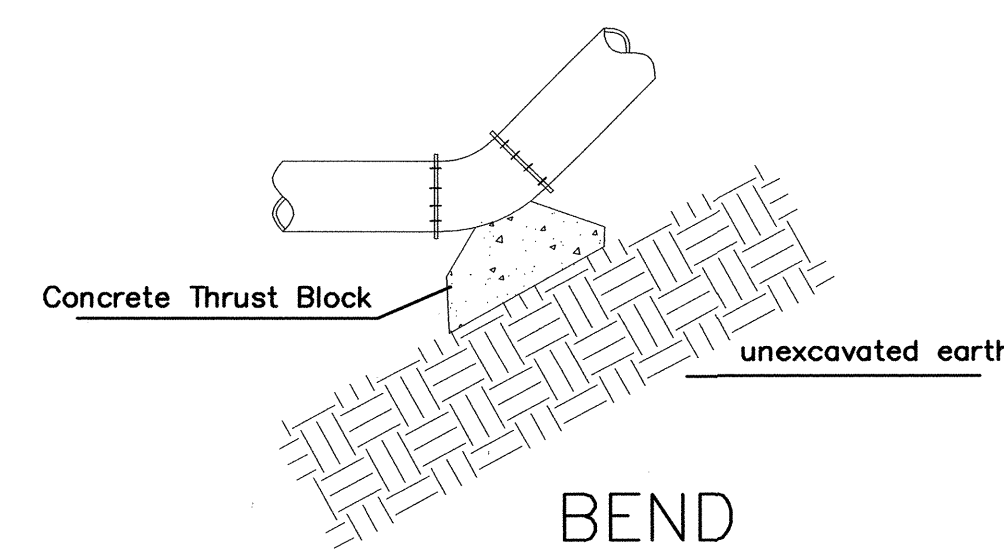
FINAL

Engineer: S. SERVIS
Designer: M. TUCKER
Dwg. P: 102080 Base V1
Date: 5/27/2014

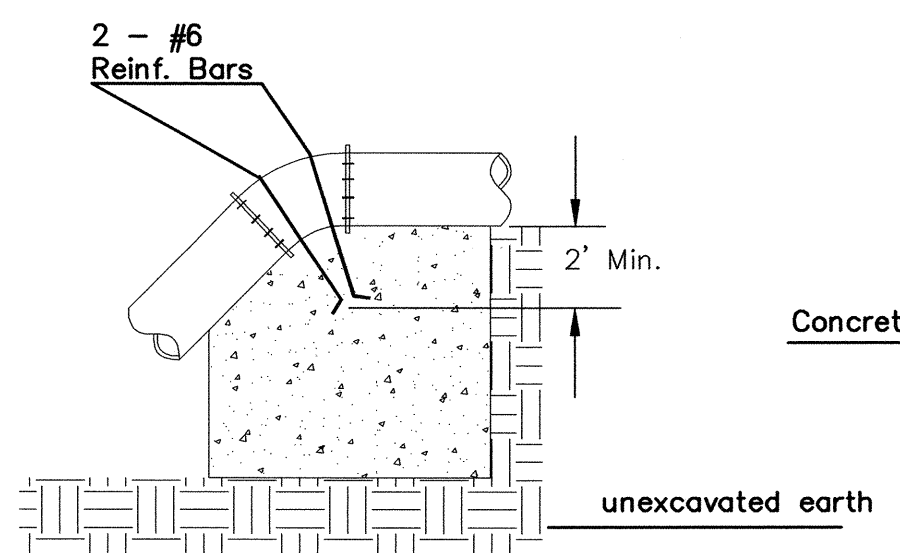
Sheet of 03



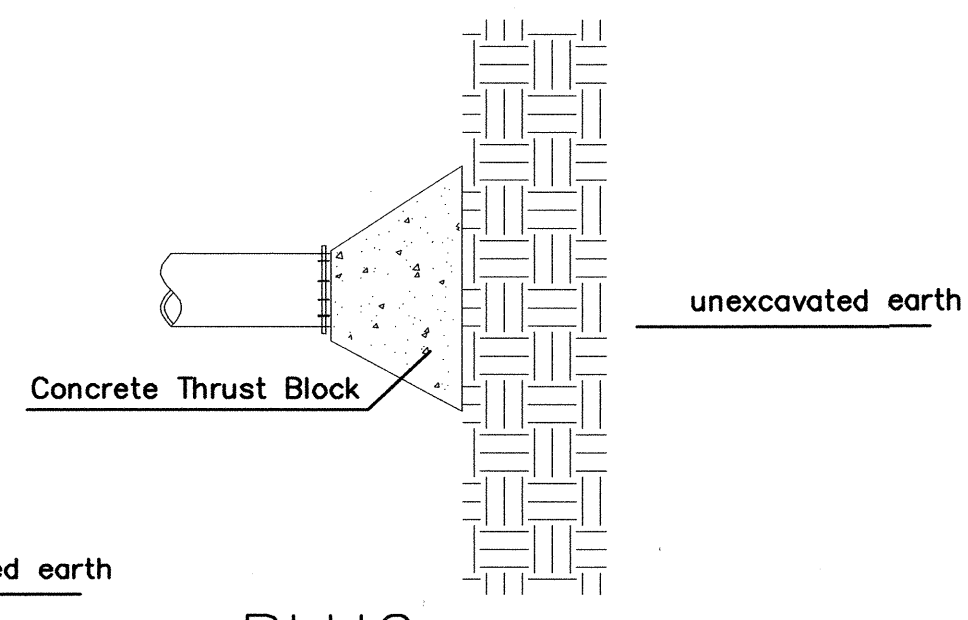
TEE



BEND



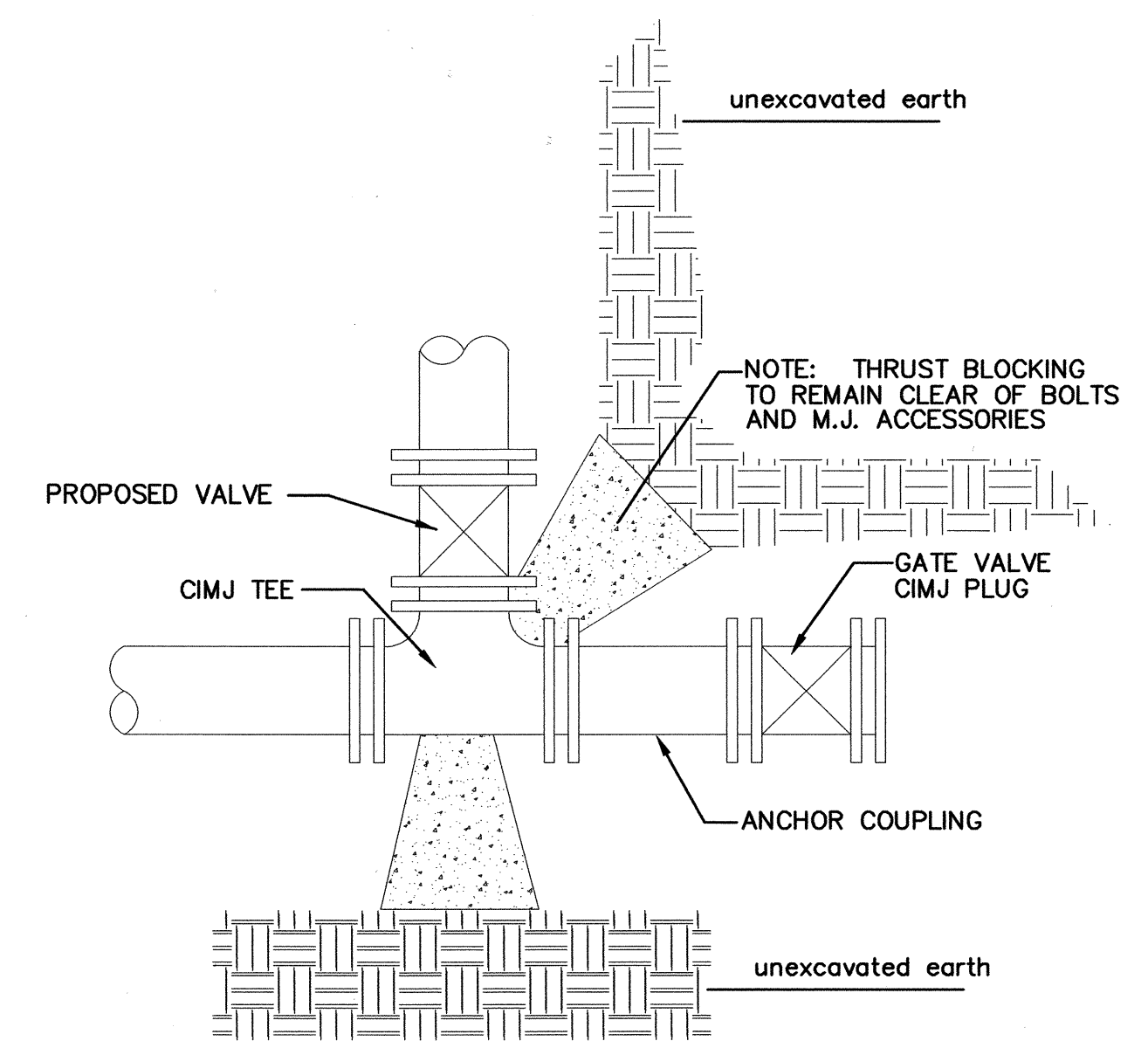
VERTICAL BEND



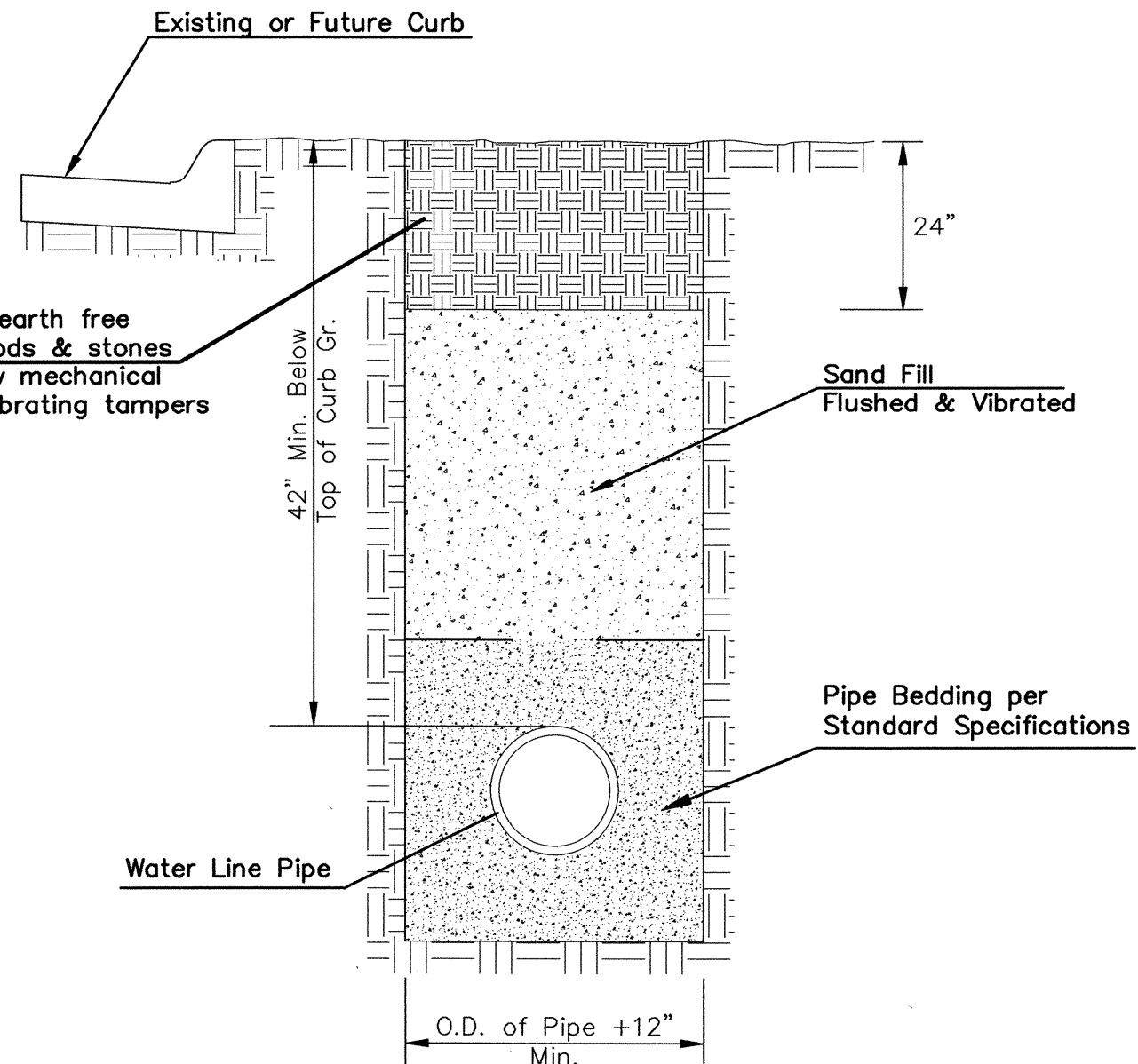
PLUG

PIPE SIZE	THRUST AT FITTINGS IN TONS--AT 150#/IN ² P					
	PLUG	90°	45°	22 1/2°	11 1/4°	TEE
6"	2.8	3.95	2.15	1.09	.55	2.8
8"	4.9	6.95	3.75	1.90	.96	4.9
12"	11.4	16.1	8.75	4.45	2.25	11.4
16"	20.15	28.5	15.4	7.85	3.95	20.15
20"	31.15	44.0	23.85	12.15	6.10	31.15
24"	44.55	63.0	34.1	17.4	8.75	44.55

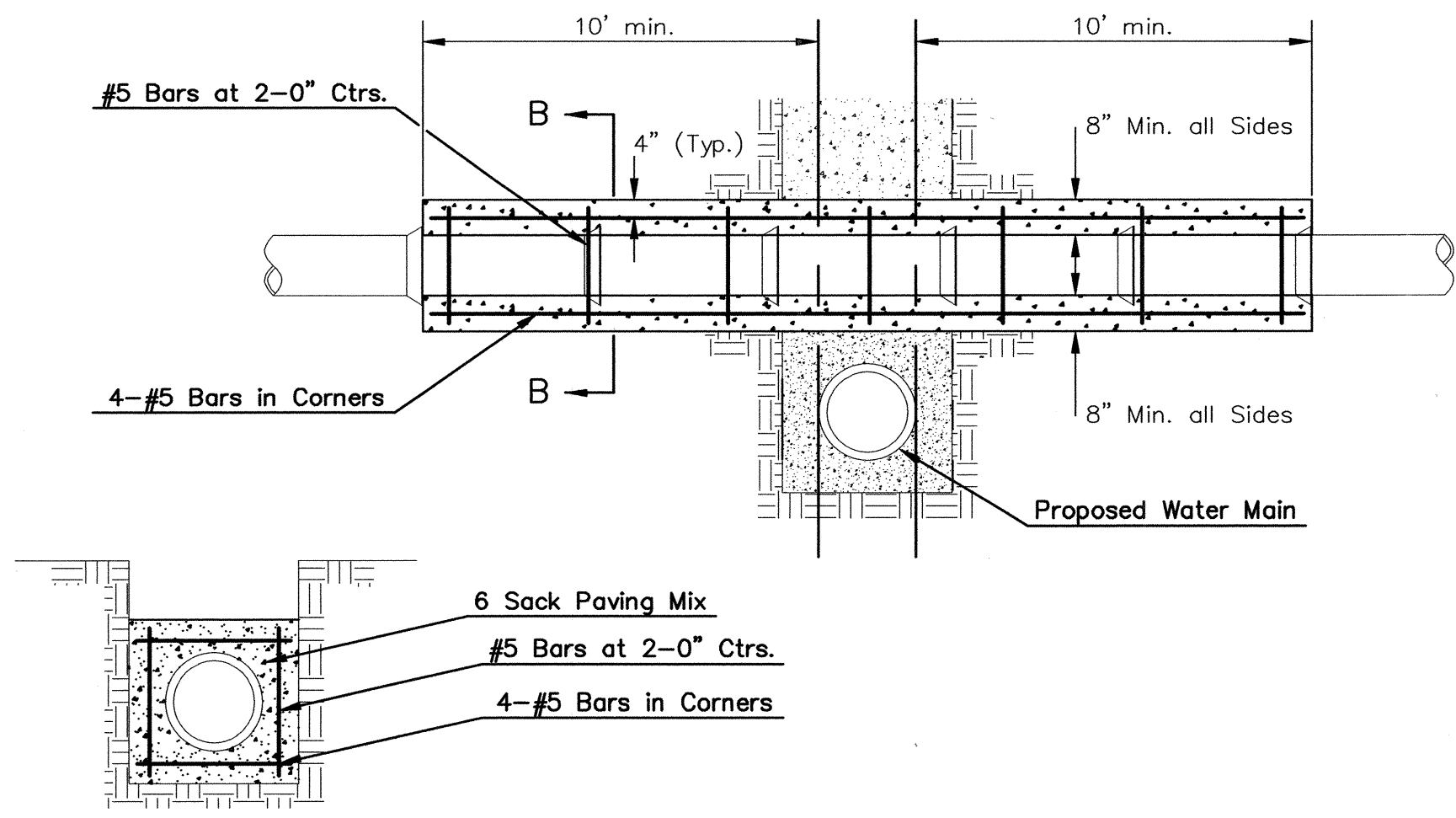
TYPICAL THRUST BLOCKS



KEY BLOCK DETAIL



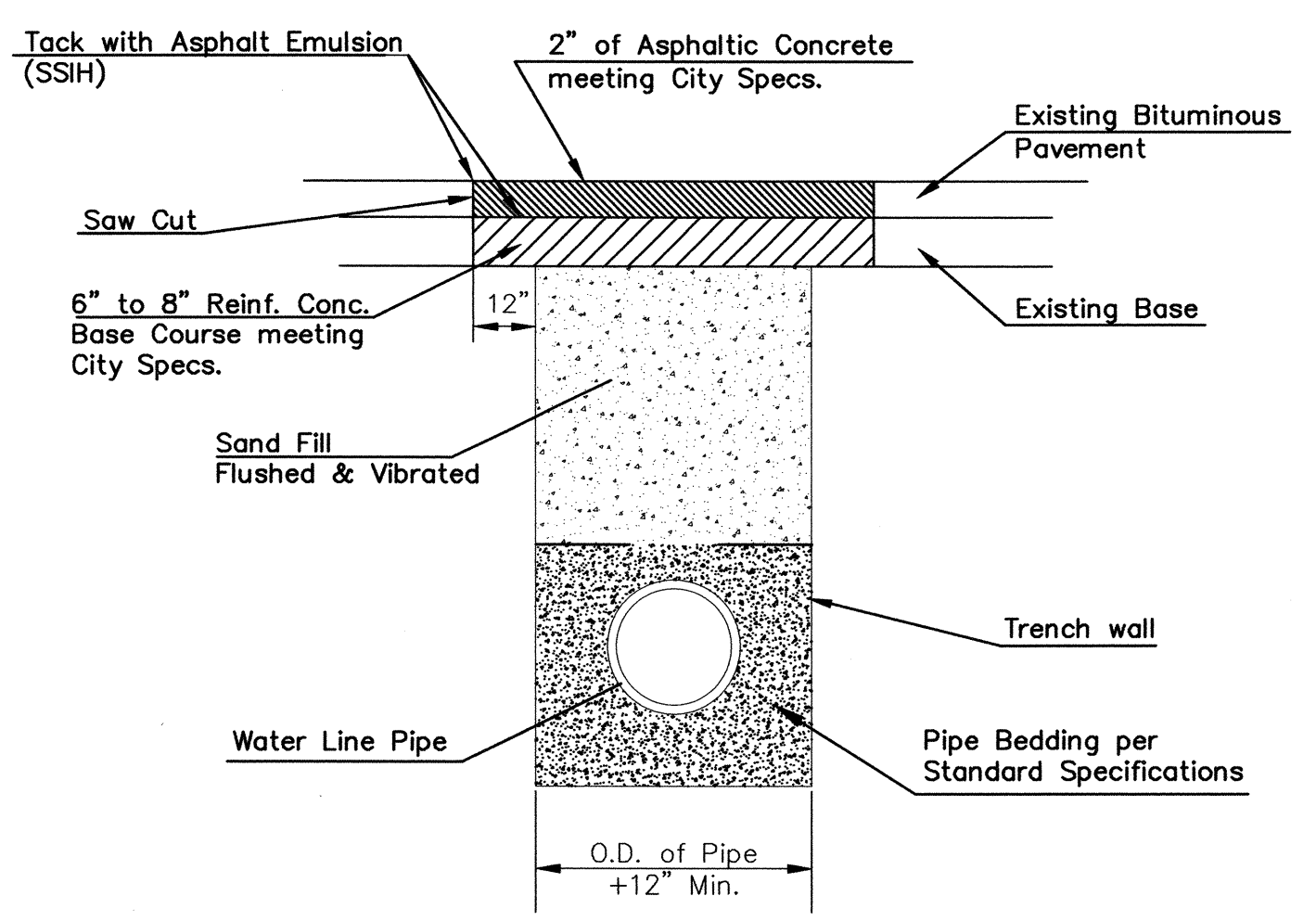
TRENCH COMPACTION IN ROAD RIGHT-OF-WAY



SECTION B-B

REINFORCED CONCRETE ENCASUREMENT OF SANITARY SEWER

Note: Encasement to begin and end at a Bell on Sanitary Sewer Pipe.



PAVEMENT REPLACEMENT & TRENCH COMPACTION UNDER EXISTING AND PROPOSED CITY ROADS
* UNLESS OTHERWISE NOTED ON PLANS

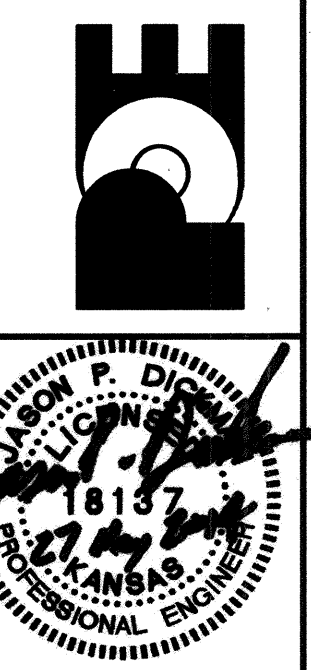


MISCELLANEOUS WATER DETAILS
CITY ENGINEER
JAMES L. ARMOUR, P.E., L.S.
PROJECT NUMBER OCA NUMBER DATE
01/2012
CITY ENGINEER'S OFFICE
CITY HALL - SEVENTH FLOOR
455 NORTH MAIN STREET
WICHITA, KANSAS 67202-1620
(316) 268-4501

FINAL
Engineer: S. SERVIS
Designer: M. TUCKER
Dwg. P.: 1020BO/Bose/VL
Date: 5/27/2014
Sheet of 03

STRIP WALL 21ST AND AIDON MISC DETAILS
CITY OF WICHITA, KANSAS
GARY JANZEN, P.E. - CITY ENGINEER

POE & ASSOCIATES, INC.
CONSULTING ENGINEERS
5940 E. Central, Suite 200 D Wichita, KS 67208-4242
Phone 316.685-4114 FAX 316.685-4444



No.	Date	By	Revision