

STATE OF KANSAS DEPARTMENT OF TRANSPORTATION PLAN AND PROFILE OF PROPOSED DOUGLAS AVENUE BRIDGE AT LINDEN

FEDERAL AID PROJECT
CITY OF WICHITA PROJECT NO. 472-85119

**SEDGWICK COUNTY
CITY OF WICHITA**

OCA 715731

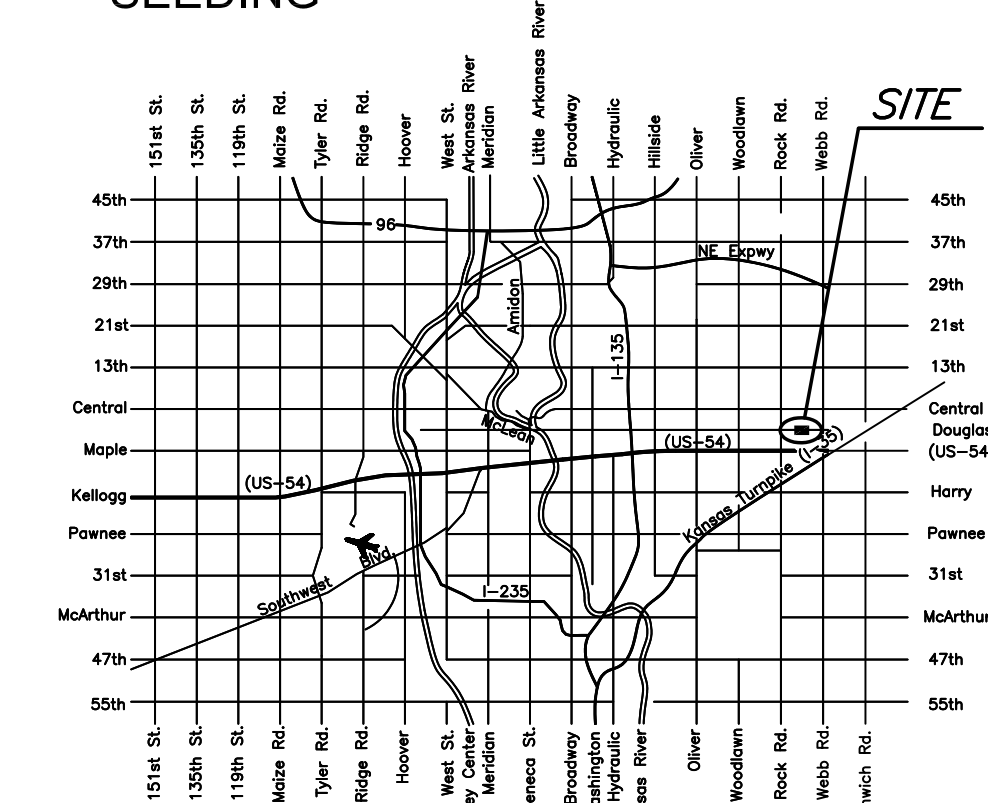
STATE	PROJECT NO.	YEAR	SHEET NO.	TOTAL SHEETS
KANSAS	87 N-0611-01	2015	1	51

F.A. NO. STP-N061(101)

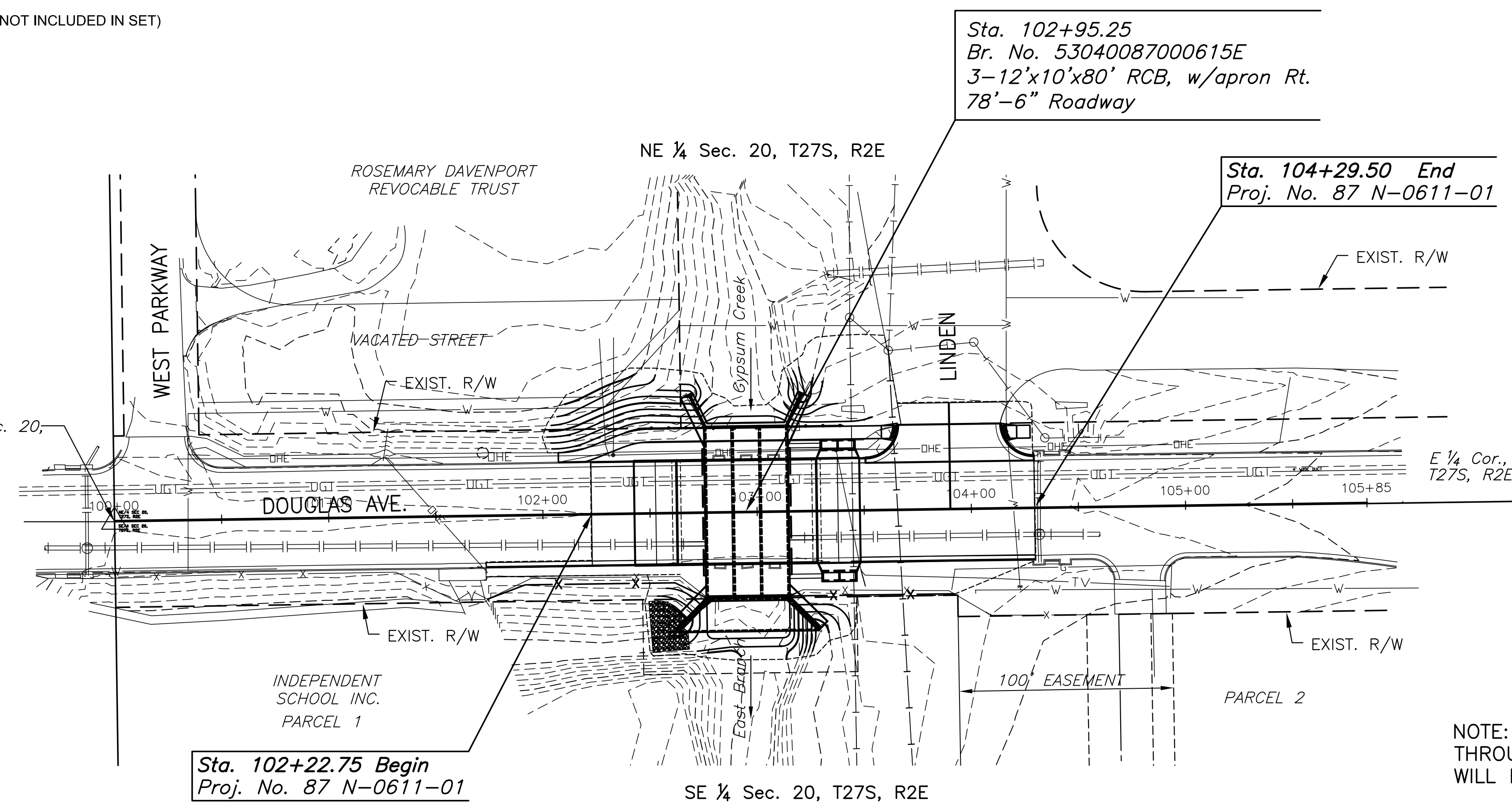
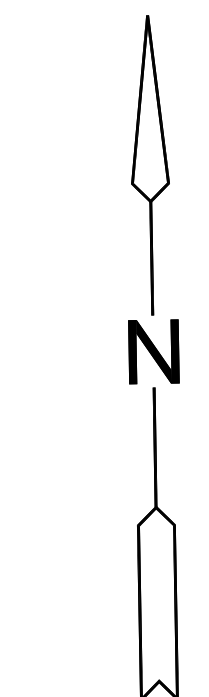


DOT PROJ. NO. 87 N-0611-01

- GRADING
- SURFACING
- CONCRETE PAVEMENT
- STORM SEWER
- BRIDGE
- PAVEMENT MARKING
- FENCING
- SEEDING



LOCATION MAP



INDEX TO DRAWINGS

SHEET NO.	DESCRIPTION
1	TITLE SHEET
3	TYPICAL SECTIONS
4	PAVING PLAN
#	CURB & GUTTER DETAILS (NOT INCLUDED IN SET)
##	WHEELCHAIR RAMP DETAILS (NOT INCLUDED IN SET)
12	STORM SEWER PLAN AND PROFILE
##	INLET DETAILS (NOT INCLUDED IN SET)
##	MANHOLE/INLET FRAME AND COVER DETAILS (NOT INCLUDED IN SET)
##	CURB INLET PAVEMENT UNDERDRAIN DETAILS (NOT INCLUDED IN SET)
18	BRIDGE CONTOUR MAP
##	RCB AUXILIARY DETAILS (LRFD) (NOT INCLUDED IN SET)
##	PRECAST CONCRETE BOX CULVERT DETAILS (NOT INCLUDED IN SET)
##	BRIDGE EXCAVATION (LRFD) (NOT INCLUDED IN SET)
##	SUPPORTS AND SPACERS FOR REINFORCING STEEL (NOT INCLUDED IN SET)
##	EROSION CONTROL BMP DETAILS (NOT INCLUDED IN SET)
##	PAVEMENT MARKING AND SIGNING PLAN (NOT INCLUDED IN SET)
##	SIGNING DETAILS (NOT INCLUDED IN SET)
38-41	TRAFFIC CONTROL PLANS
##	TRAFFIC CONTROL DETAILS (NOT INCLUDED IN SET)
##	TEMPORARY CONCRETE SAFETY BARRIER DETAILS (NOT INCLUDED IN SET)
##	PROJECT DRAINAGE MAP (NOT INCLUDED IN SET)
52-54	CROSS SECTIONS

DATE	
BY	
SURVEYED	
PLOTTED	
INKED	
DESIGNED	
SQUAD	

DESIGN DESIGNATION

AADT (2010)	=	12,050
AADT (2030)	=	14,703
DHV	=	10%
D	=	60%
T	=	3%
V	=	40 MPH
C of A	=	None
Clear Zone	=	6 FT.

CONVENTIONAL SIGNS

COUNTY LINE	-----	CENTER LINE OF PROJECT	----- 50 1
CITY LIMITS	-----	TERRACE	-----
STATE OR NATIONAL LINE	-----	CULVERTS	-----
TOWNSHIP, SECTION or GRANT LINE	-----	DROP INLET & STORM SEWER	-----
PROPERTY LINE	-----	ACCESS CONTROL	-----
HIGHWAY FENCE	-----	POWER POLE	-----
EXISTING FENCE	-----	TELEPHONE POLE	-----
GUARDRAIL	-----	MARSH	-----
CONSTRUCTION LIMITS	-----	HEDGE	-----
RIGHT OF WAY LINE	-----	TREES	-----
TRAVELED WAY	-----	PROFILE ELEVATION	-----
RAILROADS	-----	STREAM or CREEK	-----

GROSS LENGTH OF PROJECT	206.75	FT.	
EXCEPTIONS	0.00	FT.	
ADDITIONS	0.00	FT.	
NET LENGTH OF PROJECT	206.75	FT.	0.039 MILES
NET LENGTH OF BRIDGES	39.00	FT.	0.007 MILES
NET LENGTH OF ROAD	167.75	FT.	0.032 MILES

LEGEND

- Communication Lines
- Electric Lines
- Gas Lines
- Storm and Sanitary Sewers (Existing)
- Water Lines (Existing)

NOTE: TWO WAY TRAFFIC TO BE CARRIED THROUGH CONSTRUCTION. LOCAL TRAFFIC WILL BE PERMITTED TO ADJACENT PROPERTIES.

NOTE: THE PIPES ON THIS PROJECT ARE IN ACCORDANCE WITH THE CURRENT KDOT PIPE POLICY.

APPROVED - DATE	
GARY JANZEN, P.E. CITY ENGINEER	

CONSTRUCTION PLANS FOR
DOUGLAS AVENUE BRIDGE AT LINDEN
WICHITA, KANSAS

©2013 MKEC Engineering All Rights Reserved
These drawings and their contents, including, but not limited to, all concepts, designs, & ideas are the exclusive property of MKEC Engineering (MKEC), and may not be used or reproduced in any way without the express consent of MKEC.

TITLE SHEET	
PROJECT NO.	472-85119
DATE	FEB. 2014
SCALE	1"=40'
DESIGNED	DRAWN
JRA	JSB
CHECKED	JRA
NO.	REVISION
	DATE
SHEET NO.	
1 OF 51	