

℄ Hillside Sta. 53+39.7, 36.3' Lt. to
℄ Hillside Sta. 53+42.0, 50.1' Lt.
Install 14.0 L.F. 12" PVC Pipe @ 0.199%_s.
Backfill with Jetted sand.
Cap West end of pipe.
Mark end of pipe in Kind per existing marker.
Air Testing & TV Inspection not required.
(Cost of 12" Cap shall be considered incidental
to the 12" PVC Pipe.)

SE 1/4 Sec. 27, T26S, R1E

Koch Real Estate Holdings Inc.
C-602-UP

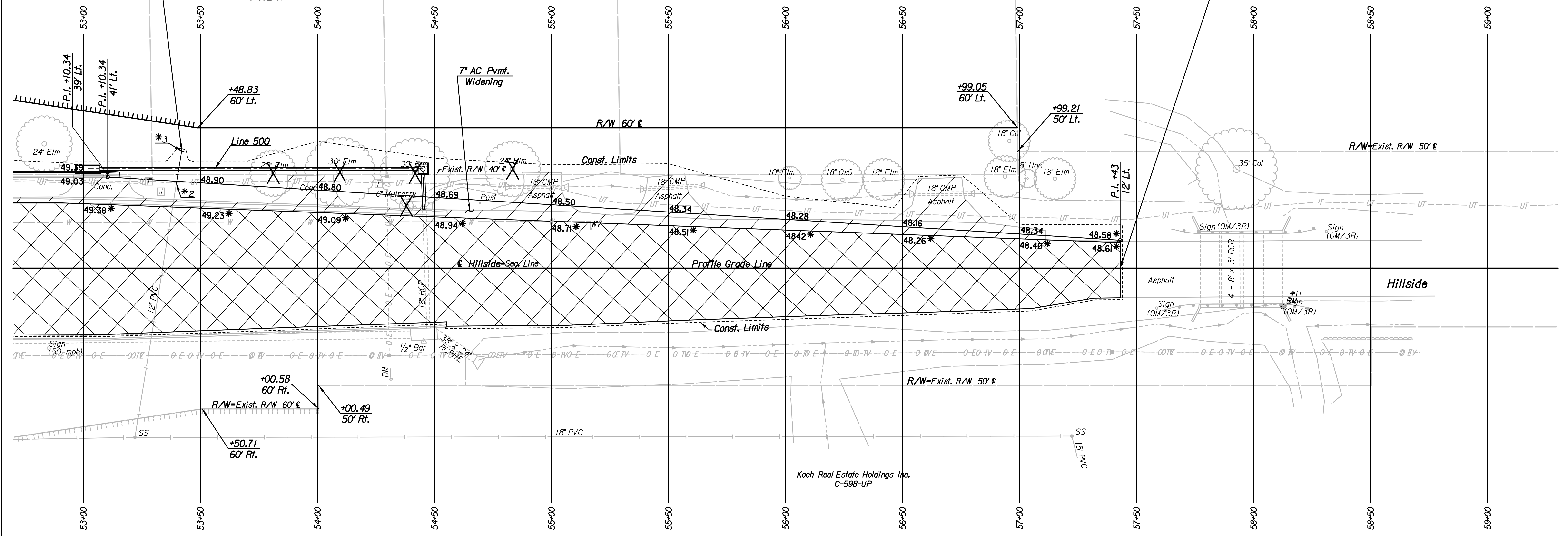
Koch Real Estate Holdings Inc.
C-602-UP

Koch Real Estate Holdings Inc.
C-602-UP

Koch Real Estate Holdings Inc.
C-602-UP

Koch Real Estate Holdings Inc.
C-602-UP

Sta. 57+43 END
PROJECT No. 472-85161



Plotted By: svb Date: 2/23/2015 9:03:40 AM
FILE: U:\Wichita-Civil\2014\136\000\Trans\Road\DN Project\Plan\14136-Hillside Plan 53.dgn

REMOVAL OF EXISTING STRUCTURES *		
STATION	SIDE	ITEM
53+33	Lt.	Traffic Signal Service Box
54+44	Lt.	Curb Inlet
54+69	Lt.	Post
54+94	Lt.	18" CMP (EP) and End Sections
55+52	Lt.	18" CMP (EP) and End Sections
56+67	Lt.	18" CMP (EP) and End Sections

* For Information Only

*1 Contractor to excavate end of existing 12" PVC Sanitary Sewer to verify location, flowline elevation, slope, pipe size, and material. Contractor shall report the findings to the Project Engineer so any necessary plan modifications may be made.

*2 ℄=-1338.36

*3 ℄=-1338.39

Utilities
Power Westar Energy
Sanitary Sewer Wichita Water Utilities
Telephone AT&T, Wichita Central Unit
Television Level 3 Communications
Cox Communications

BM#11 Chiseled " on NE corner of hubguard on bridge,
812' N of Hillside and 37th St.
16' Rt. @ Sta. 58+1.3 Elev. =1348.44

W 1/4 Cor. Sec. 26, T26S, R1E
1. Found 1" Iron Pipe in Thimble
2. N 1,712,492.9343 E 1,659,406.5053
3. ℄ of Hillside
4. 3 nails in North face of power pole 1.97' E
5. 3 nails in North face of guy pole 28.41' E
6. 3 nails in South face of fence post 37.51' W
40.60' SE

No.	Revision	By	Date
HILLSIDE PLAN STA. 53+00 TO STA. 59+00 GARY JANZEN, P.E.-CITY ENGINEER CITY OF WICHITA PROJECT NO. 472-85161			
PROFESSIONAL ENGINEERING CONSULTANTS, P.A. 303 SOUTH TOPEKA WICHITA, KS 67202 316-262-2691 www.pec1.com			
Designed by	JPS	Job No.	14136
Drawn by	SVB	Date	Feb., 2015
			Sht. 6 of 62